

Always there to help you

Register your product and get support at
www.philips.com/welcome



ORD7100



User manual

PHILIPS

Contents

1	Safety	2		
----------	---------------	----------	--	--

2	Your docking system	3		
	Introduction	3		
	What's in the box	3		
	Overview of the system	4		

3	Connect the FM antenna and power cord	5		
----------	--	----------	--	--

4	Power on and select a source	6		
----------	-------------------------------------	----------	--	--

5	Set the clock	6		
----------	----------------------	----------	--	--

6	Use the dock	7		
	Compatible iPod/iPhone models	7		
	Enjoy audio through the dock	7		
	Charge your iPod/iPhone	8		
	Undock your iPod/iPhone	8		

7	Listen to FM radio	8		
	Search for a radio station automatically	8		
	Search for a radio station manually	8		
	Store radio stations automatically	9		
	Store radio stations manually	9		

8	Listen to an external device	9		
----------	-------------------------------------	----------	--	--

9	Adjust the volume	10		
----------	--------------------------	-----------	--	--

10	Use the remote control	10		
	Activate the battery	10		
	Control play	10		
	Replace the battery	11		

11	Troubleshooting	12		
-----------	------------------------	-----------	--	--

12	Product information	13		
	Amplifier	13		
	FM Tuner	13		
	Speakers	13		
	General information	13		

13	Notice	14		
	Compliance	14		
	Care of the environment	14		
	Trademark notice	14		
	Copyright	15		

1 Safety

Read and understand all instructions before you use this product. If damage is caused by failure to follow the instructions, the warranty does not apply.

Risk of electric shock or fire!

- Never remove the casing of the product.
- Never expose the product and accessories to rain or water. Never place liquid containers, such as vases, near the product. If liquids are spilt on or into the product, disconnect it from the power outlet immediately. Contact the Consumer Care to have the product checked before use.
- Never place the product and accessories near naked flames or other heat sources, including direct sunlight.
- Never insert objects into the ventilation slots or other openings on the product.
- Where the mains plug or an appliance coupler is used as the disconnect device, the disconnect device shall remain readily operable.
- Disconnect the product from the power outlet before lightning storms.
- When you disconnect the power cord, hold the plug securely, never the cable.
- Batteries (battery pack or batteries installed) shall not be exposed to excessive heat such as sunshine, fire or the like.

Risk of short circuit or fire!

- Before you connect the product to the power outlet, make sure that the power voltage matches the value printed on the back of the product. Never connect the product to the power outlet if the voltage is different.
- Never expose the remote control or batteries to rain, water, sunshine, or excessive heat.
- Avoid force coming onto power plugs. Loose power plugs can cause arcing or fire.

- Correctly install the battery with its polarity (+/- signs) as marked on the remote control.
- Danger of explosion if battery is incorrectly replaced. Replace only with the same or equivalent type.

Risk of injury or damage to the product!

- This product shall not be exposed to dripping or splashing!
- Do not place any sources of danger on this product (e.g. liquid filled objects, lighted candles).
- Never place the product or any objects on power cords or on other electrical equipment.
- If the product is transported in temperatures below 5°C, unpack the product and wait until its temperature matches room temperature before connecting it to the power outlet.

Risk of overheating!

- Never install this product in a confined space. Always leave a space of at least four inches around the product for ventilation.
- Make sure that curtains or other objects never cover the ventilation slots on the product.

Risk of contamination!

- Remove the battery if it is exhausted or if the remote control is not to be used for an extended period of time.
- Batteries contain chemical substances, they should be disposed of properly.

Risk of swallowing coin battery!

- The device may contain a coin/button type battery, which can potentially be swallowed. Keep the battery out of reach of children at all times! If swallowed, the battery can cause serious injury or death. Severe internal burns can occur within two hours of ingestion.
- If you suspect that a battery has been swallowed or placed inside any part of the body, seek immediate medical attention.

- When you change the batteries, always keep all new and used batteries out of reach of children. Make sure that the battery compartment is completely secure after you replace the battery.
- If the battery compartment cannot be completely secured, discontinue use of the product. Keep out of reach of children and contact the manufacturer.

Note

- The type plate is located on the back of the product.

2 Your docking system

Congratulations on your purchase, and welcome to Philips! To fully benefit from the support that Philips offers, register your product at www.philips.com/welcome.

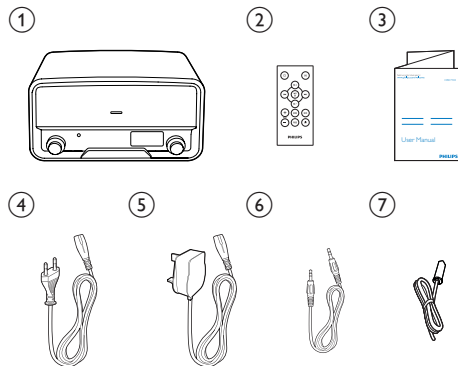
Introduction

With this system, you can:

- enjoy audio from an iPod/iPhone or external device,
- charge your iPod/iPhone, and
- listen to FM radio stations.

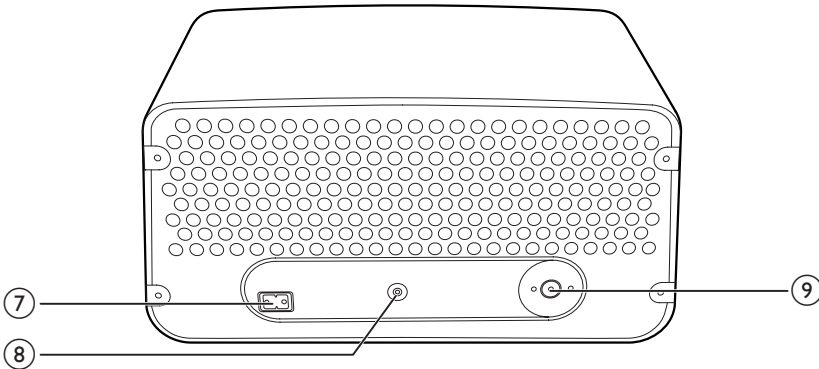
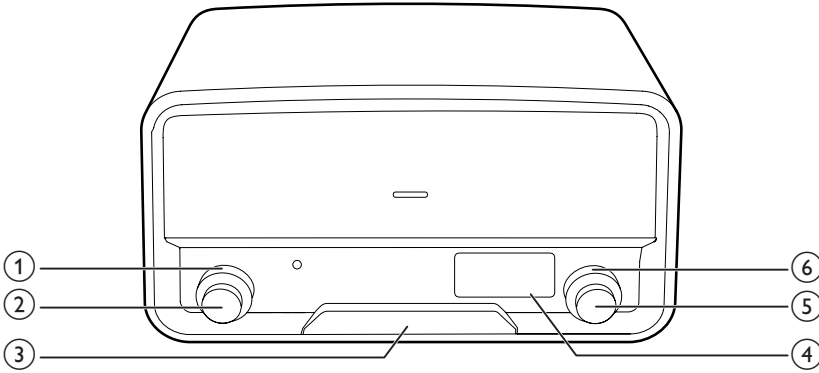
What's in the box

Check and identify the contents of the package:



- ① Docking speaker
- ② Remote control
- ③ User manual
- ④ VDE AC power cord
- ⑤ AC power cord for the U.K.
- ⑥ MP3 link cable
- ⑦ FM antenna

Overview of the system



① SOURCE

- Turn to select a source.
- Turn to switch the system from standby mode to normal mode.

② POWER VOLUME

- Press to switch the system between standby mode and normal mode.
- Turn to adjust the volume.

③ Dock for iPod/iPhone

④ LCD screen

⑤ SELECT

- In radio mode, turn to search for a radio station manually.

- In radio mode, press and hold to activate the automatic search for and storage of radio stations.
- For a compatible iPod/iPhone, press to pause or resume music play.
- For a compatible iPod/iPhone, press and hold to switch it to sleep mode, or press to wake it up.

⑥ PRESET

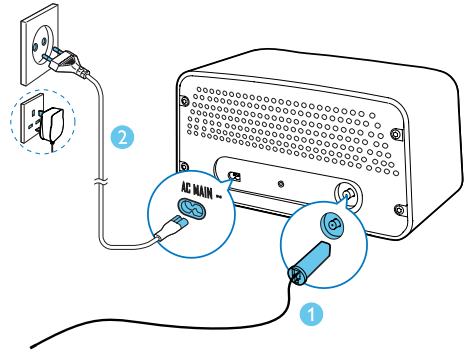
- Turn to select a preset radio station.

⑦ AC MAIN~

- Connect to the AC power cord.

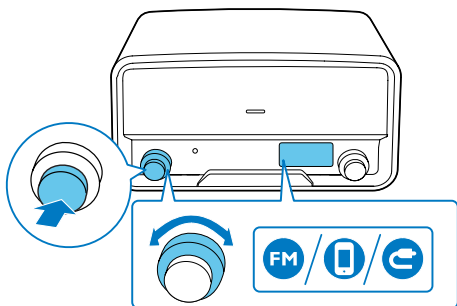
- ⑧ **MP3-LINK**
 - Connect to an external player by an MP3 link cable.
- ⑨ **Socket for FM antenna**
 - Connect to an FM antenna.

3 Connect the FM antenna and power cord



- 1 Connect the FM antenna to the product.
- 2 Connect the AC power cord to the **AC MAIN~** socket and then to the wall outlet.

4 Power on and select a source



To power on the product,

- press the **POWER VOLUME** knob,
- turn the **SOURCE** knob on the product, or
- press on the remote control.
 - ↳ The product switches to the last selected source.
- To switch the product to standby mode, press the **POWER VOLUME** knob or again.

To select a source,

- turn the **SOURCE** knob on the product, or
- press the **SRC** button on the remote control repeatedly.
 - FM radio: is highlighted, and the frequency of the current FM radio station is displayed.
 - iPod/iPhone: is highlighted, and *iPod - iPHONE* scrolls.
 - External device: is highlighted, and *AVH* is displayed.

5 Set the clock

- 1 In standby mode, press and hold the **SELECT** knob for two seconds.
 - ↳ *24H* is displayed with **24** blinking.
- 2 Turn the **SELECT** knob to select a time format, and then press the **SELECT** knob to confirm.
 - *24H*: 24-hour time format
 - *12H*: 12-hour time format
 - ↳ The hour digits blink.
- 3 Turn the **SELECT** knob to set the hour, and then press the **SELECT** knob to confirm.
 - ↳ The minute digits blink.
- 4 Turn the **SELECT** knob to set the minute, and then press the **SELECT** knob to confirm.
 - ↳ The set time is displayed.

Tip

- Once your iPod/iPhone is connected and recognized, the clock on the product is synchronized with the iPod/iPhone.

6 Use the dock

You can enjoy audio from a compatible iPod/iPhone through this product.

An application **Philips HomeStudio** is available on Apple App Store for this product. To enjoy full features, download and install the application to your iPod/iPhone.

Note

- During play, no audio signals are transferred through the headphone socket of your iPod/iPhone.
- Once your iPod/iPhone is connected and recognized, the product synchronizes its clock with the iPod/iPhone automatically.

Compatible iPod/iPhone models

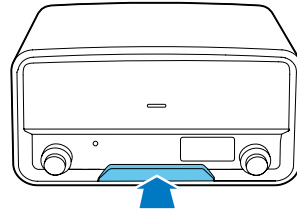
This product supports the following iPod and iPhone models.

Made for

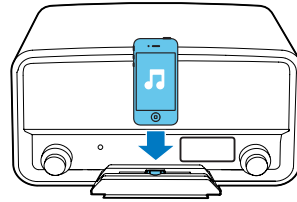
- iPod touch (2nd, 3rd, and 4th generation)
- iPod classic
- iPod nano (2nd, 3rd, 4th, 5th, and 6th generation)
- iPhone 4S
- iPhone 4
- iPhone 3GS
- iPhone 3G

Enjoy audio through the dock

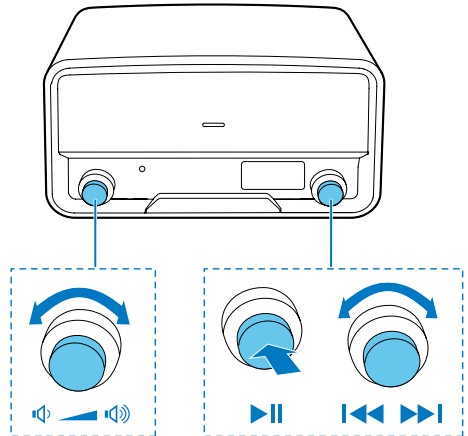
- 1 Switch the source to **iPod/iPHONE**.
- 2 Push the dock tray to eject it.



- 3 Connect your iPod/iPhone to the dock.



- 4 Play a track on your iPod/iPhone.



- To start, pause, or resume play, press the **SELECT** knob.
- To skip to a track, turn the **SELECT** knob.
- To switch the iPod/iPhone to sleep mode or wake it up, press and hold the **SELECT** knob.

Charge your iPod/iPhone

Once the iPod/iPhone is docked and recognized, the charging starts.

Undock your iPod/iPhone

Note

- Risk of damage to the dock or your iPod/iPhone: Do not twist or shake your iPod/iPhone.

- 1 Disconnect the iPod/iPhone from the dock.
- 2 Push the dock tray inwards until you hear a "click" to store it.

7 Listen to FM radio

Note

- For optimal reception, fully extend the antenna and adjust its position, or connect an outdoor antenna.
- This system does not support MW (medium wave) radio reception.
- You can store up to 20 stations for each band.

Search for a radio station automatically

Turn the **SELECT** knob clockwise or anti-clockwise, and then press the **SELECT** knob in two seconds.

↳ **SEARCH** is displayed, and then the radio frequency changes until a strong station is detected.

- To stop the search, press the **SELECT** knob again.

Search for a radio station manually

Turn the **SELECT** knob until the frequency of target radio station is displayed.

Store radio stations automatically

Press and hold the **SELECT** knob until **AUT** is displayed.

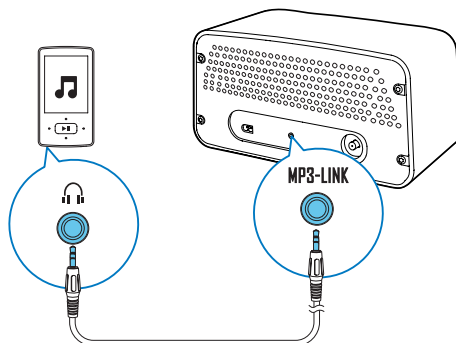
- ↳ After the search is complete, the first stored radio station is broadcast.
- To tune to a stored radio station, turn the **PRESET** knob until its sequence number is displayed.

Store radio stations manually

- 1 Tune to the target radio station.
- 2 After two seconds, press the **SELECT** knob.
 - ↳ **PXX** is displayed with **XX** blinking (**XX** indicates the sequence number).
- 3 Turn the **PRESET** knob to select a sequence number.
- 4 Press the **SELECT** knob to confirm.
- 5 Repeat steps 1-4 to store more radio stations.
 - To overwrite a preset radio station, store another station with its sequence number.
- To tune to a stored radio station, turn the **PRESET** knob until its sequence number is displayed.

8 Listen to an external device

You can also listen to an external audio device, for example, MP3 player, through this product.



- 1 Switch the source to **AUX**.
- 2 Connect the MP3 link cable between
 - the **MP3-LINK** socket on the back panel of this product, and
 - the headphone jack on the external device.
- 3 Play audio on the external device (refer to its user manual).

9 Adjust the volume

Turn the **POWER VOLUME** knob.

10 Use the remote control

During use, you can use the remote control to control play.

Activate the battery

For the first time use, pull the protective tab out from the battery compartment.

Control play

During play, follow the instructions below to control play.

FM mode

Buttons	Functions
⏮ / ⏭	To tune to a specific radio station, press repeatedly until its frequency is displayed.
⏮ / ⏭	To tune to the previous or next strong radio station, press and hold to start scanning.
PRESET +/-	To tune to a preset radio station, press repeatedly until its sequence number and frequency are displayed.
PROG	To program radio stations, 1 Tune to the radio station that you want to store. 2 Press PROG to activate the programming. 3 Press PRESET +/- to select a sequence number. 4 Press PROG to confirm. 5 Repeat the steps 1-4 to program more radio stations.
DISP	To display the clock or current frequency, press it.

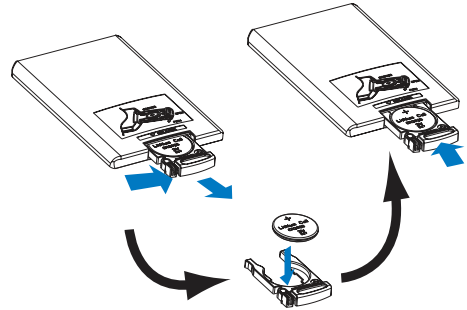
DOCK mode

Buttons	Functions
▶ OK	To start, pause, or resume play, press it.
▶ OK	To switch the iPod/iPhone to sleep mode or wake it up, press and hold it.
I◀◀/▶▶I	To skip to a track, press repeatedly.
I◀◀/▶▶I	To rewind a track or search forward fast, press and hold.
MENU	To select a track from the library, 1 Press MENU to access the iPod/Music (iPod/Music) menu of your iPod/iPhone. 2 Press MENU repeatedly to toggle through the categories. 3 Press I◀◀/▶▶I to toggle through sub-categories or select a track. 4 Press ▶ OK to enter lower-level menu or start the selected track.

Volume

Buttons	Functions
VOL+/ VOL-	To increase or decrease the volume, press repeatedly.
MUTE	To mute the product or release it from mute status, press the button.

Replace the battery



- 1** Pull out the battery tray and then remove the flat battery.
- 2** Insert one CR2025 battery with correct polarity (+/-) as indicated.
- 3** Insert the battery tray.

11 Troubleshooting



Warning

- Never remove the casing of this product.

To keep the warranty valid, never try to repair the product yourself.

If you encounter problems when using this product, check the following points before requesting service. If the problem remains unsolved, go to the Philips Web page (www.philips.com/support). When you contact the Consumer Care, make sure that the product is nearby and the model number and serial number are available.

Problem	Solution
No power	Make sure that the AC power cord is connected properly.
	Make sure that there is power at the AC power outlet.
	If a connected iPod/iPhone stays inactive for 15 minutes when it is selected as the source, the system switches to standby mode automatically.
No sound or poor sound	Adjust the volume.
	Press MUTE to release the speakers from mute status.
No response from the product	Reconnect the AC power cord, and then turn on the product again.
	If a connected iPod/iPhone stays inactive for 15 minutes when it is selected as the source, the system switches to standby mode automatically.
Remote control does not work	Before you press any function button, select the correct source with the remote control instead of the system.
	Reduce the distance between the remote control and the system.
	Insert the battery with its polarity (+/- signs) aligned as indicated.
	Replace the battery.
	Aim the remote control at the iR sensor on the front panel of the system.
Poor radio reception	Increase the distance between the product and other electrical appliances.
	Fully extend the antenna.
	Connect an outdoor FM antenna instead.
Clock is erased	Power has been interrupted or the AC power cord has been disconnected.
	Reset the clock.

12 Product information



Note

- Product information is subject to change without prior notice.

General information

AC Power Rating	100-240 V~, 50/60 Hz
Operation Power Consumption	15 W
Dimensions (Main Unit)	325 x 175 x 167 mm
Weight (Main Unit)	3.5 kg

Amplifier

Frequency Response	60 Hz - 16 kHz, ±3 dB
Signal to Noise Ratio	> 70 dBA
Aux Input	0.5 V RMS 10 kOhm

FM Tuner

Tuning Range	87.50 - 108.00 MHz
Tuning grid	50 kHz
Total Harmonic Distortion	< 2%
Signal to Noise Ratio	> 50 dBA
Number of preset radio stations	20

Speakers

Speaker Impedance	6 Ohm
Speaker Driver	2 X 3" full range
Sensitivity	> 82 dB/m/W

13 Notice

Any changes or modifications made to this device that are not expressly approved by WOOX Innovations may void the user's authority to operate the equipment.

Compliance



This product complies with the radio interference requirements of the European Community.

Class II equipment symbol:



CLASS II apparatus with double insulation, and no protective earth provided.

Care of the environment



Your product is designed and manufactured with high quality materials and components, which can be recycled and reused.



When this crossed-out wheeled bin symbol is attached to a product it means that the product is covered by the European Directive 2002/96/EC. Please inform yourself about the local separate collection system for electrical and electronic products.

Please act according to your local rules and do not dispose of your old products with your normal household waste. Correct disposal of your old product helps to prevent potential negative consequences for the environment and human health.



Your product contains batteries covered by the European Directive 2006/66/EC, which cannot be disposed with normal household waste. Please inform yourself about the local rules on separate collection of batteries because correct disposal helps to prevent negative consequences for the environmental and human health.

Environmental information

All unnecessary packaging has been omitted. We have tried to make the packaging easy to separate into three materials: cardboard (box), polystyrene foam (buffer) and polyethylene (bags, protective foam sheet.)

Your system consists of materials which can be recycled and reused if disassembled by a specialized company. Please observe the local regulations regarding the disposal of packaging materials, exhausted batteries and old equipment.

Trademark notice

Made for



iPod



iPhone

"Made for iPod" and "Made for iPhone" mean that an electronic accessory has been designed to connect specifically to iPod or iPhone respectively, and has been certified by the developer to meet Apple performance standards. Apple is not responsible for the operation of this device or its compliance with safety and regulatory standards. Please note that

the use of this accessory with iPod or iPhone may affect wireless performance. iPod and iPhone are trademarks of Apple Inc., registered in the U.S. and other countries.

Copyright

2014 © WOOX Innovations Limited. All rights reserved.

Philips and the Philips' Shield Emblem are registered trademarks of Koninklijke Philips N.V. and are used by WOOX Innovations Limited under license from Koninklijke Philips N.V.®

Specifications are subject to change without notice. WOOX reserves the right to change products at any time without being obliged to adjust earlier supplies accordingly.



Specifications are subject to change without notice.

2014 © WOOX Innovations Limited. All rights reserved.

Philips and the Philips' Shield Emblem are registered trademarks of Koninklijke Philips N.V. and are used by WOOX Innovations Limited under license from Koninklijke Philips N.V.

ORD7100_10_UM_V2.0

