

# Always there to help you

Register your product and get support at  
[www.philips.com/welcome](http://www.philips.com/welcome)



ORD2100



## User Manual

**PHILIPS**

# Contents

---

<b>1</b>	<b>Safety</b>	<b>3</b>
<hr/>		
<b>2</b>	<b>Your clock radio</b>	<b>4</b>
	Introduction	4
	What's in the box	4
<hr/>		
<b>3</b>	<b>Get started</b>	<b>4</b>
	Connect power	4
	Set the clock	4
	Adjust brightness	5
<hr/>		
<b>4</b>	<b>Use the alarm timer</b>	<b>6</b>
	Set an alarm	6
	Activate/deactivate the alarm timer	6
	Snooze the alarm	6
	Stop the alarm	6
<hr/>		
<b>5</b>	<b>Use the dock</b>	<b>7</b>
	Compatible iPod/iPhone models	7
	Enjoy audio	7
<hr/>		
<b>6</b>	<b>Listen to radio</b>	<b>8</b>
<hr/>		
<b>7</b>	<b>Play from an external device</b>	<b>8</b>
<hr/>		
<b>8</b>	<b>Use the sleep timer</b>	<b>9</b>
<hr/>		
<b>9</b>	<b>Adjust volume</b>	<b>9</b>
<hr/>		
<b>10</b>	<b>Product information</b>	<b>10</b>
	General information	10
	Tuner (FM)	10
	Amplifier	10
<hr/>		
<b>11</b>	<b>Troubleshooting</b>	<b>11</b>

---

<b>12</b>	<b>Notice</b>	<b>11</b>
	Compliance	11
	Care of the environment	11
	Trademark notice	12
	Copyright	12

# 1 Safety

Read and understand all instructions before you use this product. If damage is caused by failure to follow the instructions, the warranty does not apply.

## Risk of electric shock or fire!

- Never remove the casing of the product.
- Never expose the product and accessories to rain or water. Never place liquid containers, such as vases, near the product. If liquids are spilt on or into the product, disconnect it from the power outlet immediately. Contact Philips Consumer Care to have the product checked before use.
- Never place the product and accessories near naked flames or other heat sources, including direct sunlight.
- Never insert objects into the ventilation slots or other openings on the product.
- Where the mains plug or an appliance coupler is used as the disconnect device, the disconnect device shall remain readily operable.
- Disconnect the product from the power outlet before lightning storms.
- When you disconnect the power cord, hold the plug securely, never the cable.

## Risk of short circuit or fire!

- Before you connect the product to the power outlet, make sure that the power voltage matches the value printed on the back of the product. Never connect the product to the power outlet if the voltage is different.
- Never expose the product to rain, water, sunshine, or excessive heat.
- Avoid force coming onto power plugs. Loose power plugs can cause arcing or fire.

## Risk of injury or damage to the product!

- This product shall not be exposed to dripping or splashing!

- Do not place any sources of danger on this product (e.g. liquid filled objects, lighted candles).
- Never place the product or any objects on power cords or on other electrical equipment.
- If the product is transported in temperatures below 5°C, unpack the product and wait until its temperature matches room temperature before connecting it to the power outlet.

## Risk of overheating!

- Never install this product in a confined space. Always leave a space of at least four inches around the product for ventilation.
- Make sure that curtains or other objects never cover the ventilation slots on the product.

### Note

- The rated power voltage is printed on the back of the product. The model number and serial number are printed on the bottom.

## 2 Your clock radio

Congratulations on your purchase, and welcome to Philips! To fully benefit from the support that Philips offers, register your product at [www.philips.com/welcome](http://www.philips.com/welcome).

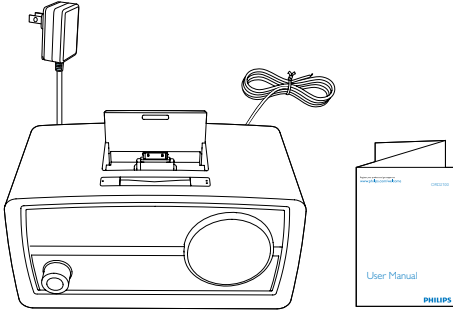
### Introduction

With this product, you can:

- enjoy audio from an iPod/iPhone or external device,
- charge your iPod/iPhone,
- listen to FM radio stations, and
- gently wake up to different alarm sources.

### What's in the box

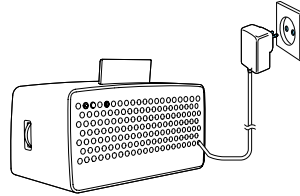
Check and identify the contents of the package:



## 3 Get started

Always follow the instructions in this chapter in sequence.

### Connect power



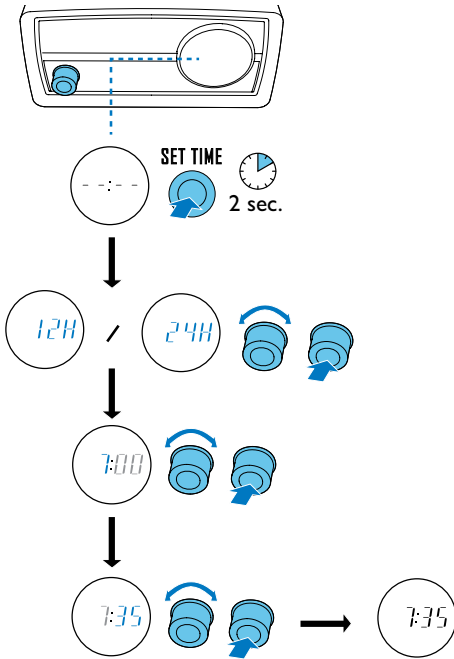
Connect the power adaptor to the AC power outlet.

- ↳ The product is switched to standby mode with the clock (if set) displayed.
- To select a source or switch the product back to standby mode, press the knob repeatedly.
- If no audio input is transferred from the iPod/iPhone or external device over 15 minutes, the product switches to standby mode automatically.

### Set the clock

#### Note

- To manually set the clock, switch the product to standby mode first.



- 1 In standby mode, press and hold **SET TIME** on the back of the product for two seconds.  
↳ **[12H]** (12-hour time format) or **[24H]** (24-hour time format) begins to blink.
- 2 Rotate the knob to select a time format, and then press the knob to confirm.  
↳ The hour digits begin to blink.
- 3 Rotate the knob to set the hour, and then press the knob to confirm.  
↳ The minute digits begin to blink.
- 4 Rotate the knob to set the minute, and then press the knob to confirm.  
↳ The set clock is displayed.

 **Tip**

- The product synchronizes its clock with iPod/iPhone automatically when the iPod/iPhone is docked and recognized.

## Adjust brightness

Press **BRIGHTNESS** repeatedly to adjust the brightness of the display panel: high, medium, or low.



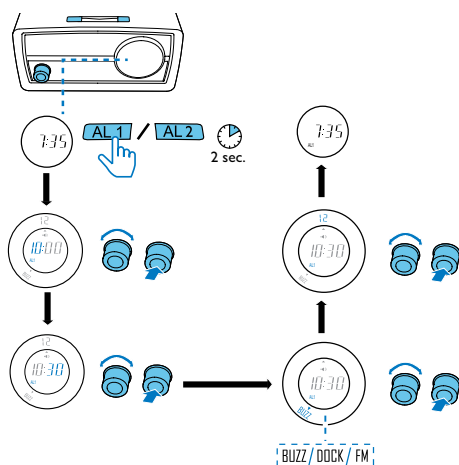
## 4 Use the alarm timer

### Set an alarm

#### Note

- Make sure that you have set the clock correctly.

You can set two alarms.



- 1 Press and hold **AL1/AL2** for more than two seconds to activate alarm setting mode.
  - ↳ The current alarm time (if set) is displayed.
  - ↳ The hour digits and alarm icon begin to blink.
- 2 Rotate the knob to set the hour.
- 3 Press the knob to confirm.
  - ↳ The minute digits blink.
- 4 Repeat steps 2-3 to set the minute, select an alarm source (**[BUZZ]**, **[DOCK]** or **[FM]**), and adjust the alarm volume.
  - ↳ The corresponding alarm icon lights up.

#### Note

- If iPod/iPhone is selected as alarm source, but no iPod/iPhone is connected, the device switches to buzzer instead.
- The gentle wake-up function is available for **[DOCK]** and **[FM]** source.

#### Tip

- With the Philips HomeStudio application installed on your iPod/iPhone, you can also select the nature sounds in the application as alarm sound.

### Activate/deactivate the alarm timer

- 1 Press **AL1** (or **AL2**) to view alarm settings.
- 2 Press **AL1** (or **AL2**) repeatedly to select **[ON]** or **[OFF]**.
  - **[ON]**: The alarm timer is activated.
  - **[OFF]**: The alarm timer is deactivated.
  - ↳ **AL1** (or **AL2**) is displayed when the alarm timer is activated.
  - ↳ **AL1** (or **AL2**) disappears when the alarm timer is deactivated.

### Snooze the alarm

When an alarm sounds, press **SNOOZE**.

- ↳ The alarm repeats after 9 minutes.

### Stop the alarm

When an alarm sounds, press **AL1** (or **AL2**).

- ↳ The alarm stops and then repeats at the same time of next day.

# 5 Use the dock

You can enjoy audio from a compatible iPod/iPhone through this product.

An application **Philips HomeStudio** is available on Apple App Store for this product. To enjoy full features, download and install the application to your iPod/iPhone.

---

## Compatible iPod/iPhone models

The product supports the following iPod and iPhone models.

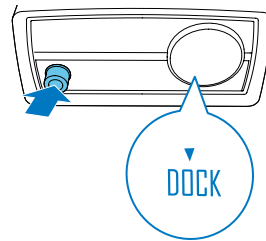
### Made for

- iPod classic
- iPod touch (2nd, 3rd, and 4th generation)
- iPod nano (4th, 5th, and 6th generation)
- iPhone 4S
- iPhone 4
- iPhone 3GS
- iPhone 3G

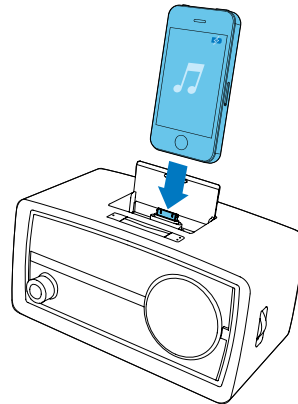
---

## Enjoy audio

- 1 Press the knob repeatedly to select **[DOCK]** mode.



- 2 Connect your iPod/iPhone to the dock.



↳ The iPod/iPhone begins to charge automatically.

- 3 Play audio on the iPod/iPhone.

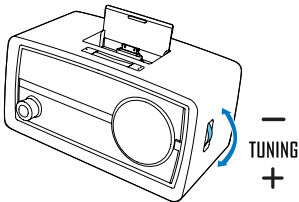
## 6 Listen to radio

### Note

- Keep the unit away from other electronic devices to avoid radio interference.
- For better reception, do not place iPod/iPhone into the dock when you listen to the radio. Fully extend and adjust the position of the FM antenna.

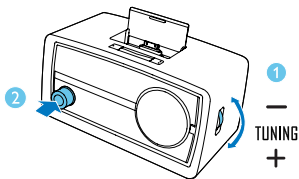
- 1 Press the knob repeatedly to switch the source to **[FM]**.
- 2 Search for a radio station manually or automatically.

To search for a radio station manually:



- Rotate **TUNING** until the frequency of target station is displayed.

To search for a radio station automatically:

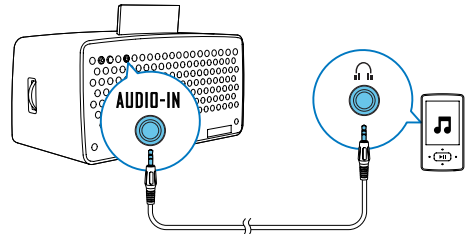


- Rotate **TUNING** and then press the knob within two seconds.  
↳ The radio tunes to a station with strong signals automatically.

## 7 Play from an external device

### Note

- The product switches to **AUX** mode automatically when an audio input cable is connected.



- 1 Connect an audio input cable with a 3.5-mm connector on both ends between
  - the **AUDIO IN** socket on the back of this product, and
  - the headphone socket of an external device.
- 2 Play audio on the external device (see the user manual of the device).

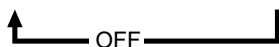


## 8 Use the sleep timer

Press **SLEEP** on the back of the product repeatedly to select a time period (in minutes).

- ↳ When the sleep timer is activated, **zZ** appears.
- ↳ After the set period, the product switches to standby mode.
- To deactivate the sleep timer, press **SLEEP** repeatedly until **[OFF]** (off) appears.

15 → 30 → 60 → 90 → 120



## 9 Adjust volume

During play, rotate the knob to adjust volume.

### Note

- When an alarm sounds, you cannot adjust volume.

# 10 Product information



## Note

- Product information is subject to change without prior notice.

## Amplifier

Rated Output Power	4 W RMS
Signal to Noise Ratio	> 67 dBA
Total Harmonic Distortion	< 1%
Audio In (MP3 link)	0.6 V RMS 20 kohm

## General information

AC power adaptor	Model No.: OH-1015A0592000U1-VDE Brand name: Philips Input: 100-240 V~, 50/60Hz, 350 mA; Output: 5.9 V $\overline{=}$ 2 A
Operation Power Consumption	10 W
Standby Power Consumption	< 1 W
Dimensions: - Main Unit (W x H x D)	245 x 123 x 122 mm
Weight: - Main Unit	1.1 kg

## Tuner (FM)

Tuning range	87.5 - 108 MHz
Tuning grid	50 kHz
Sensitivity	
- Mono, 26 dB S/N Ratio	< 22 dBu
- Stereo, 46 dB S/N Ratio	< 43 dBu
Search Selectivity	> 28 dBf
Total Harmonic Distortion	< 2%
Signal to Noise Ratio	> 55 dB

# 11 Troubleshooting

## Warning

- Never remove the casing of this product.

To keep the warranty valid, never try to repair the product yourself.

If you encounter problems when using this product, check the following points before requesting service. If the problem remains unsolved, go to the Philips Web page ([www.philips.com/support](http://www.philips.com/support)). When you contact Philips, make sure that the product is nearby and the model number and serial number are available.

### No power

- Ensure that the AC power plug of the unit is connected properly.
- Ensure that there is power at the AC outlet.

### No sound

- Adjust the volume.

### Poor radio reception

- Increase the distance between the unit and your TV or VCR.
- Fully extend the FM antenna.

### Alarm does not work

- Set the clock/alarm correctly.

### Clock/alarm setting erased

- Power has been interrupted or the power plug has been disconnected.
- Reset the clock/alarm.

# 12 Notice

Any changes or modifications made to this device that are not expressly approved by Philips Consumer Lifestyle may void the user's authority to operate the equipment.

---

## Compliance



This product complies with the radio interference requirements of the European Community.

### Class II equipment symbol:



CLASS II apparatus with double insulation, and no protective earth provided.

---

## Care of the environment



Your product is designed and manufactured with high quality materials and components, which can be recycled and reused.



When this crossed-out wheeled bin symbol is attached to a product it means that the product is covered by the European Directive 2002/96/EC. Please inform yourself about the local

separate collection system for electrical and electronic products.

Please act according to your local rules and do not dispose of your old products with your normal household waste.

Correct disposal of your old product helps to prevent potential negative consequences for the environment and human health.

### Environmental information

All unnecessary packaging has been omitted.

We have tried to make the packaging easy to separate into three materials: cardboard (box), polystyrene foam (buffer) and polyethylene (bags, protective foam sheet.)

Your system consists of materials which can be recycled and reused if disassembled by a specialized company. Please observe the local regulations regarding the disposal of packaging materials, exhausted batteries and old equipment.

---

## Trademark notice



"Made for iPod" and "Made for iPhone" mean that an electronic accessory has been designed to connect specifically to iPod or iPhone respectively, and has been certified by the developer to meet Apple performance standards. Apple is not responsible for the operation of this device or its compliance with safety and regulatory standards. Please note that the use of this accessory with iPod or iPhone may affect wireless performance.

iPod and iPhone are trademarks of Apple Inc., registered in the U.S. and other countries.

---

## Copyright

2013 © Koninklijke Philips Electronics N.V. Specifications are subject to change without notice. Trademarks are the property of Koninklijke Philips Electronics N.V or their respective owners. Philips reserves the right to change products at any time without being obliged to adjust earlier supplies accordingly.



Specifications are subject to change without notice  
© 2013 Koninklijke Philips Electronics N.V.  
All rights reserved.

ORD2100\_12\_UM\_V1.1

