

Always there to help you

Register your product and get support at
www.philips.com/support



OR2000M



User manual

PHILIPS

Contents

1	Safety	2
<hr/>		
2	What's in the box	3
<hr/>		
3	Connect power	4
<hr/>		
4	Power on	5
<hr/>		
5	Adjust volume	6
<hr/>		
6	Listen to radio	7
<hr/>		
7	Listen to an external device	8
<hr/>		
8	Troubleshooting	9
<hr/>		
9	Product information	10
	General information	10
	Tuner	10
	Speakers	10
	Amplifier	10
<hr/>		
10	Notice	11
	Compliance	11
	Care of the environment	11
	Copyright	11

1 Safety

Read and understand all instructions before you use this product. If damage is caused by failure to follow the instructions, the warranty does not apply.

Risk of electric shock or fire!

- Never expose the product and accessories to rain or water. Never place liquid containers, such as vases, near the product. If liquids are spilt on or into the product, disconnect it from the power outlet immediately. Contact the Consumer Care to have the product checked before use.
- Never place the product and accessories near naked flames or other heat sources, including direct sunlight.
- Never insert objects into the ventilation slots or other openings on the product.
- Where the mains plug or an appliance coupler is used as the disconnect device, the disconnect device shall remain readily operable.
- Disconnect the product from the power outlet before lightning storms.
- When you disconnect the power cord, always pull the plug, never the cable.

Risk of short circuit or fire!

- Before you connect the product to the power outlet, make sure that the power voltage matches the value printed on the back of the product. Never connect the product to the power outlet if the voltage is different.
- Never expose the product to rain, water, sunshine, or excessive heat.
- Avoid force coming onto power plugs. Loose power plugs can cause arcing or fire.

Risk of injury or damage to the product!

- This product shall not be exposed to dripping or splashing!

- Do not place any sources of danger on this product (e.g. liquid filled objects, lighted candles).
- Never place the product or any objects on power cords or on other electrical equipment.
- If the product is transported in temperatures below 5°C, unpack the product and wait until its temperature matches room temperature before connecting it to the power outlet.

Risk of overheating!

- Never install this product in a confined space. Always leave a space of at least four inches around the product for ventilation.
- Make sure that curtains or other objects never cover the ventilation slots on the product.

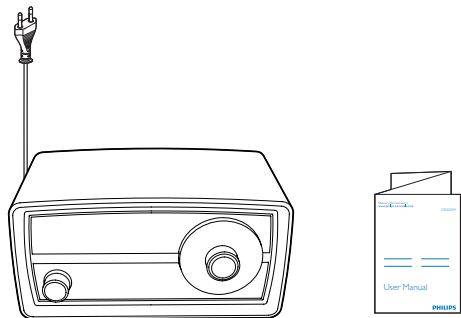


Note

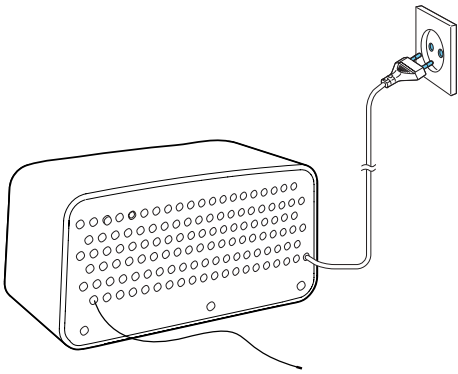
- The rated power voltage and frequency are printed on the back of the product. The model number and serial number are printed on the bottom.

2 What's in the box

Check and identify the contents of the package:

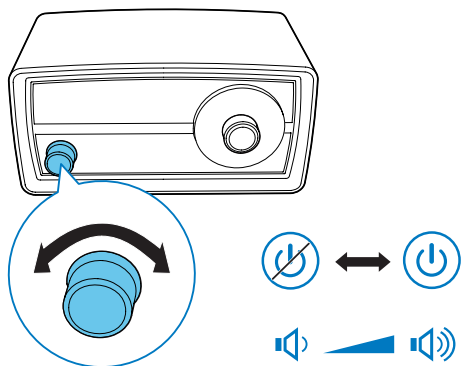


3 Connect power



Connect the power plug to the AC power outlet.

4 Power on



Turn the left knob clockwise until you hear a "click" sound.

- To power off, turn the left knob anti-clockwise until you hear a "click" sound.

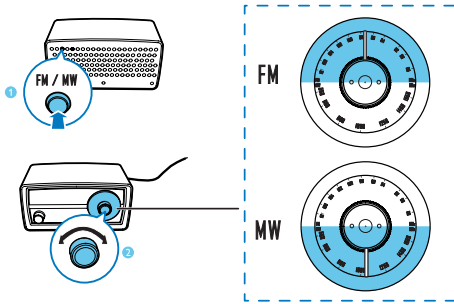
5 Adjust volume

- To increase the volume, turn the left knob clockwise.
- To decrease the volume, turn the left knob anti-clockwise.

6 Listen to radio

Note

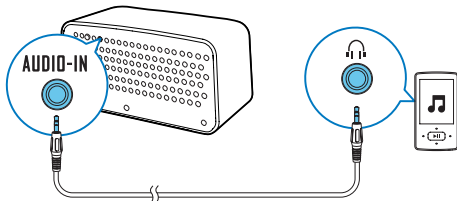
- For optimal reception, fully extend and adjust the position of the antenna.



- 1 Press down **FM/MW** to switch the tuner band to MW.
 - To switch the tuner band to FM, press **FM/MW** again to release it.
- 2 Turn the right knob anti-clockwise or clockwise to adjust the frequency.
 - ↳ The red LED bar points at the current frequency.

7 Listen to an external device

You can also listen to an external audio device, for example, MP3 player, through this product.



- 1 Connect an audio input cable with a 3.5 mm connector on both ends to
 - the **AUDIO-IN** socket on the back panel of this product, and
 - the headphone socket on the external device.
- 2 Play audio on the external device (refer to its user manual).

Note

- If you want to listen to radio, disconnect the audio input cable from the product.

8 Troubleshooting



Warning

- Never remove the casing of this product.

To keep the warranty valid, never try to repair the product yourself.

If you encounter problems when using this product, check the following points before requesting service. If the problem remains unsolved, go to the Philips Web page (www.philips.com/support). When you contact the Consumer Care, make sure that the product is nearby and the model number and serial number are available.

No power

- Make sure that the AC power cord is properly connected.
- Make sure that there is power at the AC power outlet.

No sound

- Adjust the volume.
- When listening to an external device, make sure that the external device is not muted.
- When listening to radio, make sure that the audio input cable is disconnected from the **AUDIO-IN** socket on the back of this product.

No response from the product

- Make sure that the power is available.
- Power off the product, and then power on again.

Poor radio reception

- Due to the interference from other electrics or building obstacles, the signals become weak. Move the product to a place free of interference.
- Make sure that the antenna is fully extended. Adjust the position of the antenna.

9 Product information



Note

- Product information is subject to change without prior notice.

General information

AC Power Rating	220-240V~, 50 Hz
Operation Power Consumption	9 W
Dimensions (Main Unit)	245 x 123 x 122 mm
Weight (Main Unit)	1.33 kg

Tuner

Tuning Range	FM: 87.50 - 108.00 MHz; MW: 531 - 1,602 kHz
Total Harmonic Distortion	< 2%
Signal to Noise Ratio	> 50 dBA

Speakers

Speaker Impedance	8 Ohm
Speaker Driver	3" full range
Sensitivity	> 82 dB/m/W

Amplifier

Output Power	3 W RMS
Frequency Response	60 Hz - 16 kHz, ±3 dB
Signal to Noise Ratio	> 65 dBA
Audio Input	0.5 V RMS 20 kOhm

10 Notice

Any changes or modifications made to this device that are not expressly approved by Gibson Innovations may void the user's authority to operate the equipment.

Compliance



This product complies with the radio interference requirements of the European Community.



This is CLASS II apparatus with double insulation, and no protective earth provided.

Care of the environment



Your product is designed and manufactured with high quality materials and components, which can be recycled and reused.



When this crossed-out wheeled bin symbol is attached to a product it means that the product is covered by the European Directive 2002/96/EC. Please inform yourself about the local separate collection system for electrical and electronic products.

Please act according to your local rules and do not dispose of your old products with your normal household waste.

Correct disposal of your old product helps to prevent potential negative consequences for the environment and human health.

Environmental information

All unnecessary packaging has been omitted. We have tried to make the packaging easy to separate into three materials: cardboard (box), polystyrene foam (buffer) and polyethylene (bags, protective foam sheet.)

Your system consists of materials which can be recycled and reused if disassembled by a specialized company. Please observe the local regulations regarding the disposal of packaging materials, exhausted batteries and old equipment.

Copyright

2015 © Gibson Innovations Limited. All rights reserved.

Philips and the Philips' Shield Emblem are registered trademarks of Koninklijke Philips N.V. and are used by Gibson Innovations Limited under license from Koninklijke Philips N.V.®

Specifications are subject to change without notice. Gibson reserves the right to change products at any time without being obliged to adjust earlier supplies accordingly.



2015 © Gibson Innovations Limited. All rights reserved.

This product has been manufactured by, and is sold under the responsibility of Gibson Innovations Ltd., and Gibson Innovations Ltd. is the warrantor in relation to this product.

Philips and the Philips Shield Emblem are registered trademarks of Koninklijke Philips N.V. and are used under license from Koninklijke Philips N.V.

OR2000M_12_UM_V3.0

