

Register your product and get support at
www.philips.com/welcome

MT3120



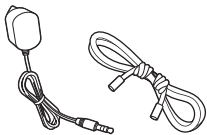
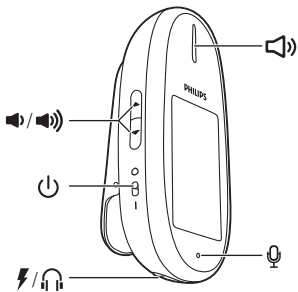
User manual

PHILIPS

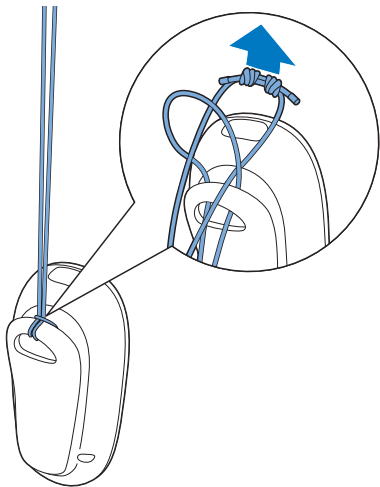


- Use only the power supply listed in the extended user documentation.
- Do not allow the product to come into contact with liquids.
- Risk of explosion if internal, rechargeable battery is replaced by an incorrect type.
- Dispose of used, internal batteries according to the instructions. (Refer to the extended user documentation online)
- This is a handsfree product with high speaker volume. Make sure the product is not too close to your ear.

1



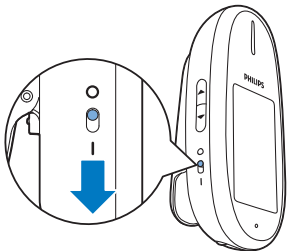
2



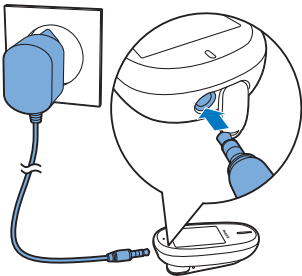
3



1

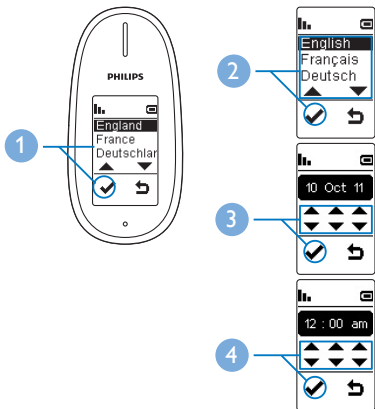


2




4

Set country, language, date and time.





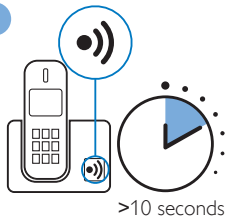
Register your phone

1 Put the base of your original cordless phone in registration mode to connect to the handsfree phone (as described in your original phone's user manual). 2 Typically locate the  on the base, and press and hold it for approximately 10 seconds to enter registration mode. 3 If the PIN code of your original phone base is not recognized automatically, enter it on your handsfree phone's screen.

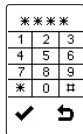
1



2

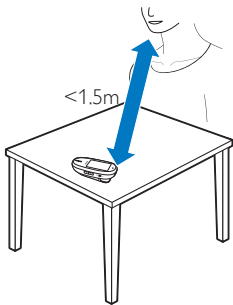
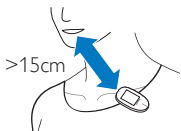


3



6

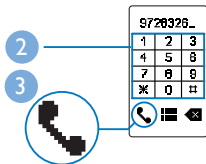
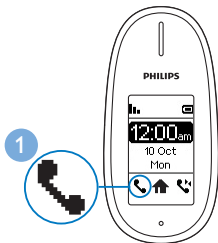
Wear / place your clip phone



7



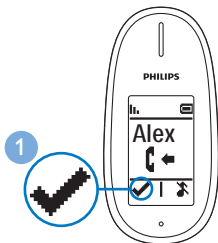
Make a call



8



Answer a call





Main menu



Make / accept a call



Call log



Signal strength



Remaining battery charge



Phonebook



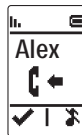
Settings



Select / confirm



Back / cancel



Silence an incoming call



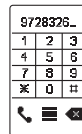
Mute the microphone



End a call



Options



Backspace



How to connect the handsfree phone to my other phones?

I cancelled registration during initial setup, how to register my phone?

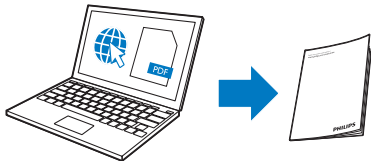
Registration fails continuously.

Caller ID does not display

- Go to **⬆** > **☰** > **[Services]** > **[Register]** and then follow the steps described in **5**.

- Base memory is full. Delete un-used handsets (see bases user manual) and try again.
- Wrong pass code. Check code in bases user manual.
- Service may not be activated. Check with your provider.
- The caller may have blocked caller ID.
- Base may not support caller ID.

i



www.philips.com/support

Extended user documentation



CE 0979

Reproduction in whole or in part is prohibited without the written consent of the copyright owner. Trademarks are the property of Koninklijke Philips Electronics N.V. or their respective owners. All rights reserved.
© 2012 Koninklijke Philips Electronics N.V.



QSG_MT3120
52_EN_V1.0
WK12181