



MG7791



BC

Manufactured for:
Philips Personal Health
a division of Philips North America LLC
P.O. Box 10313, Stamford, CT 06904
USA



This symbol on the product's nameplate means it is listed by Underwriters' Laboratories, Inc.

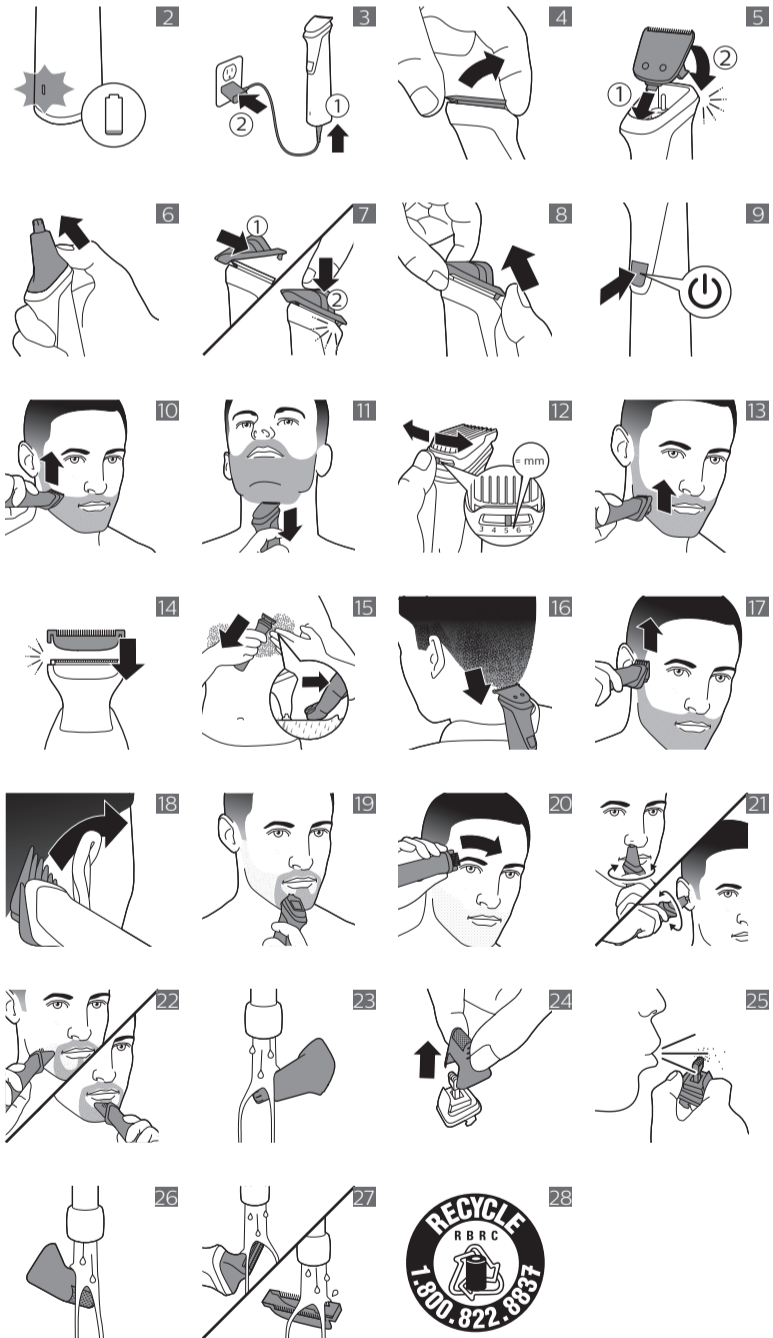
Norelco is a registered trademark of Philips North America LLC.
PHILIPS and Philips shield are registered trademarks of Koninklijke Philips N.V.

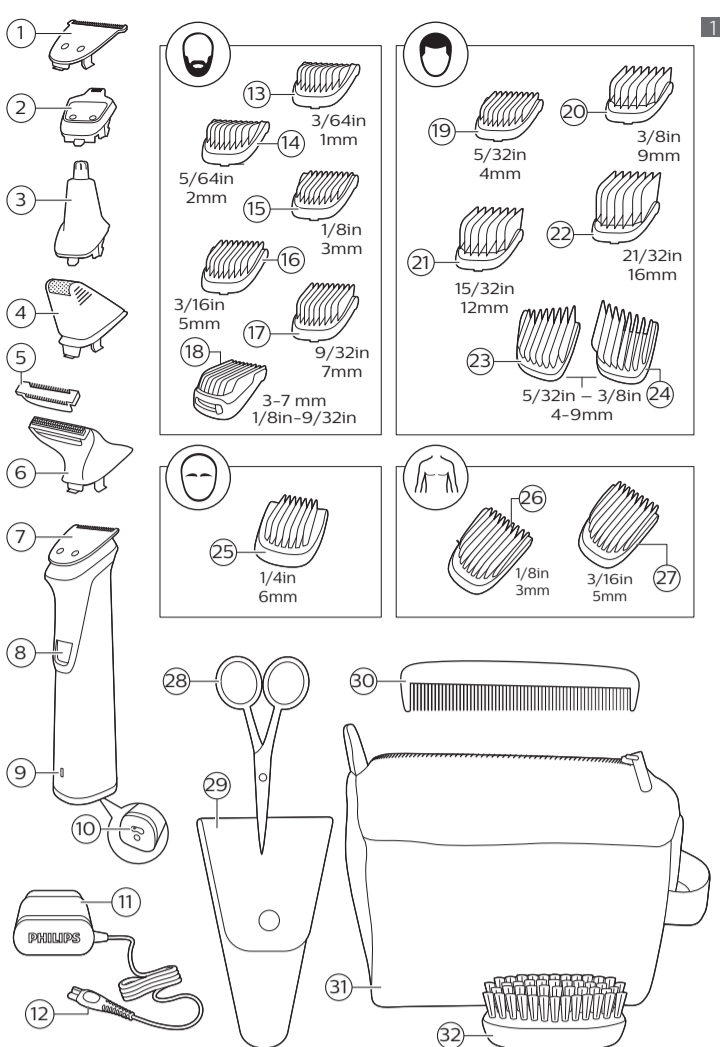
©2018 Philips North America LLC. All rights reserved.

4222.002.9148.1 (10/29/2018)



>75 % recycled paper
>75 % papier recyclé





English

IMPORTANT SAFETY INSTRUCTIONS

When using an electric product, basic precautions should always be followed, including the following:

Read all instructions before using this product.

DANGER

To reduce the risk of electric shock:

- Do not reach for a corded product that has fallen into water. Unplug immediately from the power outlet.
- Keep the power cord dry.
- Do not place or store the product where it can fall or be pulled into a tub or sink. Do not place or drop the product into water or other liquid.
- Except when charging, always unplug this product from the power outlet immediately after use.
- Remove power cord from power outlet and product before cleaning.

WARNING

To reduce the risk of burns, fire, electric shock, or injury to persons:

- Close supervision is required when this product is used by, on, or near children, or persons with limited physical, sensory, or mental capabilities or invalids.
- Use this product only for its intended household use as described in this manual. Do not use attachments not recommended by Philips North America LLC.
- Never operate this product if it has a damaged power cord, if it is not working properly, after it has been dropped or damaged, or after the product or power cord has been dropped into water. For assistance call 1-8xx-xxx-xxxx.
- Keep the power cord away from heated surfaces.
- Never drop or insert any object into any opening.
- Do not use the power cord in or near a power outlet that contains an electric air freshener to prevent damage to the power cord.
- Do not use product outdoors or operate where aerosol (spray) products are being used or where oxygen is being administered.
- Always check cutters, cutting unit and guards before using the product. Do not use the product if cutters, cutting unit or guards are damaged, as injury may occur.
- Always attach power cord to product first, then to power outlet. To disconnect, set all controls to 'off' position. Then remove power cord from power outlet.
- Plug power cord directly into power outlet. Do not use an extension cord.
- Unplug power cord before plugging in or unplugging the product.
- Only use the power cord and other accessories supplied with the product.
- Do not attempt to open the product to remove or replace the built-in rechargeable battery.
- The batteries used in this product may present a fire or chemical burn hazard if mistreated. Do not disassemble, heat above 100 °C (212 °F) or incinerate.

IMPORTANT: The power plug contains a transformer. Do not cut off the power plug to replace it with another plug as this will cause a hazardous condition.

SAVE THESE INSTRUCTIONS

Introduction

Congratulations on your purchase and welcome to Philips Norelco!

To fully benefit from the support that Philips Norelco offers, register your product at www.norelco.com/register.

General description (Fig. 1)

- 1 Extra-wide hair trimmer
- 2 Precision trimmer
- 3 Nose trimmer
- 4 Precision shaver
- 5 Skin protector
- 6 Body shaver
- 7 Full-size hair trimmer
- 8 On/off button
- 9 Battery status indicator
- 10 Socket for small plug
- 11 Power plug
- 12 Small plug
- 13 Stubble guard 3/64 in. (1 mm)
- 14 Stubble guard 5/64 in. (2 mm)
- 15 Beard guard 1/8 in. (3 mm)
- 16 Beard guard 3/16 in. (5 mm)
- 17 Beard guard 9/32 in. (7 mm)
- 18 Adjustable guard 1/8 in. - 9/32 in. (3-7 mm)
- 19 Hair guard 5/32 in. (4 mm)
- 20 Hair guard 3/8 in. (9 mm)
- 21 Hair guard 15/32 in. (12 mm)
- 22 Hair guard 21/32 in. (16 mm)
- 23 Fading hair guard 5/32 in.-3/8 in. (4-9 mm)
- 24 Fading hair guard 5/32 in.-3/8 in. (4-9 mm)
- 25 Eyebrow guard 1/4 in. (6 mm)
- 26 Body guard 1/8 in. (3 mm)
- 27 Body guard 3/16 in. (5 mm)
- 28 Scissors
- 29 Pouch for scissors
- 30 Beard comb
- 31 Toiletry bag

32 Beard brush

Not shown: cleaning brush



This symbol indicates that the product can be used in the bath or shower.

Charging

Battery status indications

- When the battery is almost empty, the battery status indicator lights up orange (Fig. 2).
- When the product is charging, the battery status indicator flashes white slowly.
- During quick charge, the battery status indicator flashes white quickly. After approx. 5 minutes of charging, the battery indicator flashes white slowly. The product now contains enough power for one cordless trimming session.
- When the battery is fully charged, the battery status indicator lights up white continuously.

Note: After approx. 30 minutes, the light goes out automatically.

Charging

Charge the product before first use and when the display indicates that the battery is almost empty. When the product has charged for 3 hours, it has a cordless operating time of up to 6 hours.

- Charging, recharging or using the product at temperatures below 40°F (4,5°C) or higher than 95°F (35°C) adversely affects the lifespan of the battery.
- If the product is subjected to a major change in temperature, pressure or humidity, let the product acclimatize for 30 minutes before use.

- 1 Make sure the product is turned off.
- 2 Insert the small plug into the product and put the power plug in any 120V AC outlet (Fig. 3).
- 3 After charging, remove the power plug from the wall outlet and pull the small plug out of the product.

Note: An adapter plug may be necessary for cord usage in some foreign countries. Use an attachment plug adapter of the proper configuration for power outlet.

Quick charge

After approx. 5 minutes charging, the product contains enough power for one cordless trimming session.

Using the product

Always check the product and all accessories before use. Do not use the product or any accessory if it is damaged, as this may cause injury. Always replace a damaged part with one of the original type.

Note: This product can only be used without a cord.

Note: Turn off and clean the product and attachments after each use

- Use this product for its intended household use as described in this manual.
- For hygienic reasons, the product should only be used by one person.

Trimming is easier when the skin and hair are dry.

Detaching and attaching cutting elements

- 1 To detach a cutting element, push upwards against the teeth of the cutting element and take it off the handle (Fig. 4).
- 2 To attach a cutting element, insert the lug of the cutting element into the guiding slot at the front and push the back of the cutting element onto the product ('click') (Fig. 5).

Detaching the precision shaver and nose trimmer

- 1 Place your finger on the arrow at the back of the attachment and push it off the handle in the direction of the arrow (Fig. 6).

Attaching and detaching guards

- 1 To attach any type of guard onto a cutting element, slide the front part of the guard onto the teeth and push the projection at the back of the guard into the product ('click') (Fig. 7).
- 2 To detach any type of guard from the cutting element, carefully pull its back part off the product and then slide it off the cutting element (Fig. 8).

Note: When trimming for the first time, start by using the guard with the maximum trimming length setting to familiarize yourself with the product.

Turning the product on and off MG7791

- 1 Press the on/off button once to turn the product on or off (Fig. 9).

Attachments for use on beard

Full-size hair trimmer

Use the full-size hair trimmer without a guard to trim hair close to the skin (to a length of 1/32in./0.5mm) or to create clean lines around your beard, neck and sideburns.

- 1 To trim hair close to the skin, place the flat side of the cutting element against your skin and make strokes against the direction of hair growth (Fig. 10).
- 2 For contouring, hold the cutting element perpendicular to the skin and move it upwards or downwards with gentle pressure (Fig. 11).

Beard guards

Attach a beard guard to the full-size hair trimmer to trim your beard and moustache evenly. The product comes with 6 beard guards. The hair length settings are indicated on the guards. The settings correspond to the remaining hair length after trimming.

Guard	inch	mm
Stubble guard	3/64 in.	1 mm
Stubble guard	5/64 in.	2 mm
Beard guard	1/8 in.	3 mm
Beard guard	3/16 in.	5 mm
Beard guard	9/32 in.	7 mm
Adjustable guard	1/8 in.- 9/32 in.	3 mm-7 mm

- 1 Attach the guard to the full-size hair trimmer.
- 2 Adjustable guard: Push the length selector to the left or right to select the desired hair length setting (Fig. 12).
- 3 To trim in the most effective way, move the guard against the direction of hair growth (Fig. 13). Make sure the surface of the guard always stays in contact with the skin.

Attachments for use on body

- Use the green body guards to trim body hair.
- When you trim for the first time, use the 5 mm/3/16 in. body guard to familiarize yourself with the product.
- Body hair can be trimmed wet or dry, however dry is preferable because wet hair tends to stick to the body. Also when trimming sensitive areas, always use a body guard.
- Since all hairs do not grow in the same direction, you may want to try different trimming positions (i.e. upwards, downwards, or across). Practice is best for optimum results.
- Always make smooth and gentle movements and be sure the surface of the guard always stays in contact with your skin.
- When too many hairs have accumulated on the product, blow the hairs out before use, for best trimming results.

Body guards

Attach a body guard to the full-size hair trimmer to trim hairs below the neckline. The product comes with 2 body guards. The hair length settings are indicated on the guards. The settings correspond to the remaining hair length after trimming.

Guard	inch	mm
Body guard (green)	1/8 in.	3 mm
Body guard (green)	3/16 in.	5 mm

- 1 Attach a body guard to the full-size hair trimmer.
- 2 To trim in the most effective way, stretch the skin with your free hand and move the guard against the direction of hair growth (Fig. 15). Make sure the surface of the guard always stays in contact with the skin.

Body shaver

Attach the body shaver to the product, to shave hair below the neckline such as your underarms and chest.

Only use the body shaver with the skin protector.

- 1 Attach the body shaver to the product.
- 2 Attach the skin protector to the full-size hair trimmer (Fig. 14).
- 3 To shave in the most effective way, stretch the skin with your free hand and move the shaver against the direction of hair growth (Fig. 15). Make sure the surface of the shaver always stays in full contact with the skin.

Attachments for use on head

Extra-wide hair trimmer

Use the extra-wide hair trimmer without a guard to clip the hair on your head very close to the skin (1/32 in./0.5 mm) or to contour the neckline and area around the ears.

- 1 To contour the hairline around the ears, comb the hair ends over the ears.
- 2 Tilt the product in such a way that only one edge of the cutter blades touches the hair ends when you shape the contours around the ears.
- 3 To contour the nape of the neck or sideburns, turn the product and make downward strokes (Fig. 16).
- 4 Move the product slowly and smoothly following the natural hairline.

Hair guards

Attach a hair guard to the extra-wide hair trimmer to evenly trim the hairs on your head. The product comes with 4 hair guards. The hair length settings are indicated on the guards. The settings correspond to the remaining hair length after trimming.

Guard	inch	mm
Hair guard	5/32 in.	4 mm
Hair guard	3/8 in.	9 mm
Hair guard	15/32 in.	12 mm
Hair guard	21/32 in.	16 mm

- 1 Attach a guard to the extra-wide hair trimmer.
- 2 Move the trimmer slowly over the crown from different directions to achieve an even result. Make sure the surface of the guard always stays in contact with the skin.
 - Always move the trimmer against the direction of hair growth (Fig. 17). Press lightly.
 - Make overlapping passes over the head to ensure that all hair that should be cut has been cut.

Fading hair guard

Attach the fading hair guards to the extra-wide hair trimmer to trim the hair around the ears with a faded result. The product comes with 2 guards. Use both guards to trim hair around both ears. Choose a hair guard based on the preferred trimming direction of back to front or front to back. Always make sure that you hold the side of the guard with the short teeth closest to your ear.

Guard	inch	mm
Fading hair guards	5/32 in.-3/8 in.	4-9 mm

- 1 Attach the guard to the extra-wide hair trimmer to trim the hair around the ear. Then attach the other guard to trim the hair around the other ear.
- 2 Place the product on your hair at the back or front of your ear, depending on the trimming direction you prefer. Always make sure that the side of the guard with the short teeth is closest to your ear.
- 3 Move the trimmer slowly around the ear, while holding it steady (Fig. 18). For best results, move the trimmer against the direction of hair growth (back to front).

Precision attachments for use on face

Precision trimmer

Use the precision trimmer to create fine lines and contours around your facial style, close to the skin (to a length of 1/32 in./0.5 mm).

- 1 Hold the precision trimming head perpendicular to the skin and move the trimming head upwards or downwards with gentle pressure (Fig. 19).

Eyebrow guard

Use the full-size hair trimmer with the eyebrow guard attached for tidying up eyebrows or trimming sideburns to a length of 1/4 in./6 mm.

- 1 Slowly move the trimmer against the hair growth direction. Press lightly and make sure that the surface of the comb always stays in contact with the skin (Fig. 20).

Nose trimmer

Use the nose trimmer to trim your nose hair and ear hair.

- Make sure nasal passages are clean. Make sure outer ear channels are clean and free from wax.
- Do not insert the tip more than 3/16 in./5 mm.
- Always clean the attachment after each use.

Trimming nose hair

- 1 Gently move the tip in and out of nose while turning it around to remove unwanted hairs (Fig. 21).

Trimming ear hair

- 1 Slowly move the tip round the ear to remove hairs that stick out beyond the rim of the ear.
- 2 Gently move the tip in and out of the outer ear channel to remove unwanted hairs (Fig. 21).

Precision shaver

Use the precision shaver after trimming, to shave unwanted hairs on cheeks, chin and along the beard with precision. Make sure to pre-trim your beard first, with the full-size hair trimmer without guard, to obtain the best result.

Note: Use the precision shaver to remove remaining hairs and detailing your beard style. It is not suitable for a full face shave.

- 1 Gently press the precision shaver onto the skin and shave along contoured edges to remove any unwanted hairs (Fig. 22).

Cleaning

Never use scouring pads, abrasive cleaning agents or aggressive liquids such as gasoline or acetone to clean the product.

Never dry the trimmer teeth with a towel or tissue, as this may damage the trimmer teeth.

After every use: cleaning under the tap

- 1 Turn off the product and disconnect from the power outlet.
- 2 Remove any guard or cutting element (see 'Detaching and attaching cutting elements') from the product.
- 3 Rinse the hair chamber under a warm tap.
- 4 Clean the cutting element and guard under a warm tap.
- 5 Carefully shake off excess water and let all parts air dry completely.

Thorough cleaning

- 1 Turn off the product and disconnect from the power outlet.
- 2 Clean the handle under the tap or wipe the handle clean with a dry or moist cloth.
- 3 Remove any guard or cutting element (see 'Detaching and attaching cutting elements') from the product.

- 4 Remove any hairs that have accumulated in the hair chamber with the cleaning brush supplied.
- 5 Remove any hairs that have accumulated in the cutting elements and/or guards with the cleaning brush supplied.
- 6 Clean the cutting elements under a warm tap.
- 7 Clean the guards under a warm tap.
- 8 Carefully shake off excess water and let all parts air dry completely.

Cleaning the nose trimmer

Clean the nose trimmer immediately after use and when a lot of hair or dirt has accumulated on the nose trimmer head.

- 1 Rinse the nose trimmer head with hot water (Fig. 23).
- 2 Turn on the product and rinse the nose trimmer head once more to remove any remaining hairs. Then turn off the product again.

For a thorough clean, immerse the nose trimmer head in a bowl with warm water for a few minutes and then turn on the product to remove stubborn hair/debris.

- 3 Carefully shake off excess water and let all parts air dry completely.

Cleaning the precision shaver

- 1 Hold the precision shaver at the grooves on each side and pull the top part off the bottom part (Fig. 24).
- 2 Blow and/or shake out any hair that has accumulated inside the precision shaver (Fig. 25).
- 3 Clean the top part of the precision shaver under a warm tap (Fig. 26).
- 4 Carefully shake off excess water and let all parts air dry completely.
- 5 Reattach the top part onto the bottom part of the precision shaver.

Cleaning the body shaver

- 1 Remove the skin protector by pulling it upwards off the shaver.
- 2 Clean the skin protector and body shaver under a warm tap (Fig. 27).
- 3 Carefully shake off excess water and let both parts air dry completely.
- 4 Reattach the skin protector onto the body shaver (Fig. 14).

This product has no other user-serviceable parts. For assistance call 1-800-243-3050.

Storage

- Store the product in the pouch supplied. Make sure the product is dry before you store it in the pouch.
- Be sure the product is turned off. Remove cord from outlet and the product before storing it in a safe, dry location where it will not be crushed, banged, or subject to damage.
- Do not wrap cord around the product when storing.
- Store cord and other accessories in a safe location where these will not be cut or damaged.
- Do not place or store the product where it can fall or be pulled into a tub or sink, water or other liquid while plugged in.

Assistance

For assistance, visit our website: www.philips.com/support or call toll free 1-800-243-3050.

Online information is available 24 hours a day, 7 days a week.

Disposal

- This product contains a rechargeable lithium-ion battery which must be disposed of properly (Fig. 28). Contact your local town or city officials for battery disposal information. You can also call 1-800-822-8837 or visit www.call2recycle.org for battery drop-off locations.
- For assistance, visit our website www.philips.com/support or call 1-800-243-3050 toll free.
- Your product is designed and manufactured with high quality materials and components, which can be recycled and reused. For recycling information, please contact your local waste management facilities or visit www.recycle.philips.com

Full Ten-Year Warranty

Philips North America LLC warrants this new product (except foil, cutters and guards) against defects in materials or workmanship for a period of ten years from the date of purchase, and agrees to repair or replace any defective product without charge.

IMPORTANT: This warranty does not cover damage resulting from accident, misuse or abuse, lack of reasonable care, the affixing of any attachment not provided with the product or loss of parts or subjecting the product to any but the specified voltage or batteries.*

NO RESPONSIBILITY IS ASSUMED FOR ANY SPECIAL, INCIDENTAL OR CONSEQUENTIAL DAMAGES.

In order to obtain warranty service, simply go to www.philips.com/support for assistance. It is suggested that for your protection you return shipments of product by insured mail, insurance prepaid. Damage occurring during shipment is not covered by this warranty.

NOTE: No other warranty, written or oral, is authorized by Philips North America LLC.

This warranty gives you specific legal rights, and you may also have other rights which vary from state to state. Some states do not allow the exclusion or limitation of incidental or consequential damages, so the above exclusion and limitations may not apply to you.

*Read enclosed instructions carefully.

45-DAY MONEY-BACK GUARANTEE

If you are not fully satisfied with your product send the product back and we'll refund you the full purchase price.

The product must be shipped prepaid by insured mail, insurance prepaid, have the original sales receipt, indicating purchase price and date of purchase, and the money-back guarantee return authorization form enclosed.

We cannot be responsible for lost mail.

The product must be postmarked no later than 45 days after the date of purchase. Philips reserves the right to verify the purchase price of the product and limit refunds not to exceed suggested retail price.

To obtain money-back guarantee return authorization form, call 1-800-243-3050 for assistance.

Delivery of refund check will occur 6-8 weeks after receipt of returned product.