

Register your product and get support at
www.philips.com/welcome



EN	User manual	3
DA	Brugervejledning	26
DE	Benutzerhandbuch	50
ES	Manual del usuario	73

FR	Mode d'emploi	98
IT	Manuale utente	122
NL	Gebruiksaanwijzing	146
SV	Användarhandbok	170

PHILIPS

Contents

1 Important	4
Safety	4
Important Safety Instructions	4
Hearing safety	5
Notice	6
Recycling	6
2 Your Micro Hi-Fi System	8
Introduction	8
Premium Hi-Fi tubes available in the audio system	8
What's in the box	8
Overview of the main unit	9
Overview of the remote control	10
3 Get started	12
Connect speakers	12
Connect FM antenna	13
Connect power	13
Prepare the remote control	13
Set clock	13
Turn on	13
Switch to standby mode	14
4 Play disc/USB	15
Play from disc	15
Play from USB	15
5 Control play	16
Skip to a track	16
Pause/resume play	16
Display play information	16
Repeat play	16
Random play	16
Program tracks	16
Scan all tracks	17
Search within a track	17
6 Adjust volume level and sound effect	18
Adjust volume level	18
Enhance bass	18
Enhance treble	18
Select automatic loudness control	18
Mute sound	18
Listen through headphone	18
7 Tune to FM radio stations	19
Program radio stations automatically	19
Program radio stations manually	19
Tune to a preset radio station	19
Set RDS clock	19
Show RDS information	20
8 Use more of your audio system	21
Set the alarm timer	21
Set the sleep timer	21
Listen to other devices	21
9 Product information	22
Specifications	22
Amplifier	22
Disc	22
Tuner (FM)	22
Speakers	22
General information	22
USB playability information	23
Supported MP3 disc formats	23
RDS program types	24
10 Troubleshooting	25
No sound or poor sound	25

1 Important

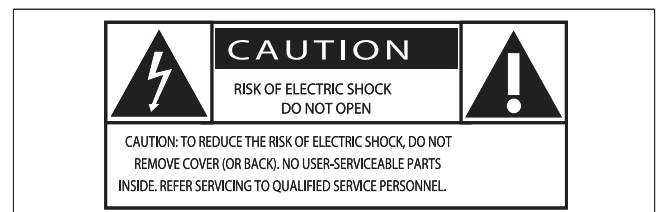
Safety

Important Safety Instructions

- ① Read these instructions.
- ② Keep these instructions.
- ③ Heed all warnings.
- ④ Follow all instructions.
- ⑤ Do not use this apparatus near water.
- ⑥ Clean only with dry cloth.
- ⑦ Do not block any ventilation openings. Install in accordance with the manufacturer's instructions.
- ⑧ Do not install near any heat sources such as radiators, heat registers, stoves, or other apparatus (including amplifiers) that produce heat.
- ⑨ Protect the power cord from being walked on or pinched, particularly at plugs, convenience receptacles, and the point where they exit from the apparatus.
- ⑩ Only use attachments/accessories specified by the manufacturer.
- ⑪ Use only with the cart, stand, tripod, bracket, or table specified by the manufacturer or sold with the apparatus. When a cart is used, use caution when moving the cart/apparatus combination to avoid injury from tip-over.
- ⑫ Unplug this apparatus during lightning storms or when unused for long periods of time.
- ⑬ Refer all servicing to qualified service personnel. Servicing is required when the apparatus has been damaged in any way, such as power-supply cord or plug is damaged, liquid has been spilled or objects have fallen into the apparatus, the apparatus has been exposed to rain or moisture, does not operate normally, or has been dropped.
- ⑭ Battery usage CAUTION – To prevent battery leakage which may result in bodily injury, property damage, or damage to the unit:
 - Install all batteries correctly, + and - as marked on the unit.
 - Do not mix batteries (old and new or carbon and alkaline, etc.).
 - Remove batteries when the unit is not used for a long time.
- ⑮ Apparatus shall not be exposed to dripping or splashing.
- ⑯ Do not place any sources of danger on the apparatus (e.g. liquid filled objects, lighted candles).
- ⑰ This product may contain lead and mercury. Disposal of these materials may be regulated due to environmental considerations. For disposal or recycling information, please contact your local authorities or the Electronic Industries Alliance: www.eiae.org.



Know these safety symbols





This 'bolt of lightning' indicates uninsulated material within your unit may cause an electrical shock. For the safety of everyone in your household, please do not remove product covering.

The 'exclamation point' calls attention to features for which you should read the enclosed literature closely to prevent operating and maintenance problems.

WARNING: To reduce the risk of fire or electric shock, this apparatus should not be exposed to rain or moisture and objects filled with liquids, such as vases, should not be placed on this apparatus.

CAUTION: To prevent electric shock, match wide blade of plug to wide slot, fully insert.

How to connect a plug

The wires in the mains lead are coloured with the following code: blue = neutral (N), brown = live (L).

As these colours may not correspond with the colour markings identifying the terminals in your plug, proceed as follows:

- Connect the blue wire to the terminal marked N or coloured black.
- Connect the brown wire to the terminal marked L or coloured red.
- Do not connect either wire to the earth terminal in the plug, marked E (or e) or coloured green (or green and yellow). Before replacing the plug cover, make certain that the cord grip is clamped over the sheath of the lead - not simply over the two wires.

Mains plug

This apparatus is fitted with an approved 13 Amp plug. To change a fuse in this type of plug proceed as follows:

- ① **Remove fuse cover and fuse.**
- ② **Fix new fuse which should be a BS13625 Amp, A.S.T.A. or BSI approved type.**

③ **Refit the fuse cover.**

If the fitted plug is not suitable for your socket outlets, it should be cut off and an appropriate plug fitted in its place.

If the mains plug contains a fuse, this should have a value of 5 Amp. If a plug without a fuse is used, the fuse at the distribution board should not be greater than 5 Amp.

The severed plug must be disposed off to avoid a possible shock hazard should it be inserted into a 13 Amp socket elsewhere.



Warning

- Never remove the casing of this audio system.
- Never lubricate any part of this audio system.
- Place this audio system on a flat, hard and stable surface.
- Never place this audio system on other electrical equipment.
- Only use this audio system indoors. Keep this audio system away from water, moisture and liquid-filled objects.
- Keep this audio system away from direct sunlight, naked flames or heat.
- Never look into the laser beam inside the audio system.

Hearing safety

Listen at a moderate volume.

- Using headphones at a high volume can impair your hearing. This product can produce sounds in decibel ranges that may cause hearing loss for a normal person, even for exposure less than a minute. The higher decibel ranges are offered for those that may have already experienced some hearing loss.
- Sound can be deceiving. Over time your hearing 'comfort level' adapts to higher volumes of sound. So after prolonged listening, what sounds 'normal' can actually be loud and harmful to your hearing. To guard against this, set your volume to a safe level before your hearing adapts and leave it there.

To establish a safe volume level:

- Set your volume control at a low setting.
- Slowly increase the sound until you can hear it comfortably and clearly, without distortion.

Listen for reasonable periods of time:

- Prolonged exposure to sound, even at normally 'safe' levels, can also cause hearing loss.
- Be sure to use your equipment reasonably and take appropriate breaks.

Be sure to observe the following guidelines when using your headphones.

- Listen at reasonable volumes for reasonable periods of time.
- Be careful not to adjust the volume as your hearing adapts.
- Do not turn up the volume so high that you can't hear what's around you.
- You should use caution or temporarily discontinue use in potentially hazardous situations. Do not use headphones while operating a motorized vehicle, cycling, skateboarding, etc.; it may create a traffic hazard and is illegal in many areas.

Norge

Typeskilt finnes på apparatens bakside.
Observer: Nettbryteren er sekundert innkopleet.
Den innebygde nettdelen er derfor ikke fraktoplet nettet så lenge apparatet er tilsluttet nettkontakten.
For å redusere faren for brann eller elektrisk støt, skal apparatet, ikke utsettes for regn eller fuktighet.

Notice

Any changes or modifications made to this device that are not expressly approved by Philips Consumer Lifestyle may void the user's authority to operate the equipment.



This product complies with the radio interference requirements of the European Community.

This product complies with the requirements of the following directives and guidelines:
<RadioInteferenceDirectives>

Recycling

Your product is designed and manufactured with high quality materials and components, which can be recycled and reused. When you see the crossed-out wheel bin symbol attached to a product, it means the product is covered by the European Directive 2002/96/EC:



Never dispose of your product with other household waste. Please inform yourself about the local rules on the separate collection of electrical and electronic products. The correct disposal of your old product helps prevent potentially negative consequences on the environment and human health.

Your product contains batteries covered by the European Directive 2006/66/EC, which cannot be disposed of with normal household waste. When you see the crossed-out wheel bin symbol with the chemical symbol 'Pb', it means that the batteries comply with the requirement set by the directive for lead:



Pb

Please inform yourself about the local rules on separate collection of batteries. The correct disposal of batteries helps prevent potentially negative consequences on the environment and human health.

Recording and playback of material might require consent. See Copyright Act 1956 and The Performer's Protection Acts 1958 to 1972.



Windows Media and the Windows logo are trademarks, or registered trademarks of Microsoft Corporation in the United States and/or other countries.

2 Your Micro Hi-Fi System

Congratulations on your purchase, and welcome to Philips! To fully benefit from the support that Philips offers, register your product at www.Philips.com/welcome.

Introduction

With this audio system, you can enjoy music from audio discs and USB devices directly or listen to FM radio stations.

The audio system offers you multiple sound effect settings that enrich sound with Digital Sound Control (DSC), Dynamic Bass Boost (DBB) and bass/treble enhancement (loudness). The audio system supports the following media formats:



Premium Hi-Fi tubes available in the audio system

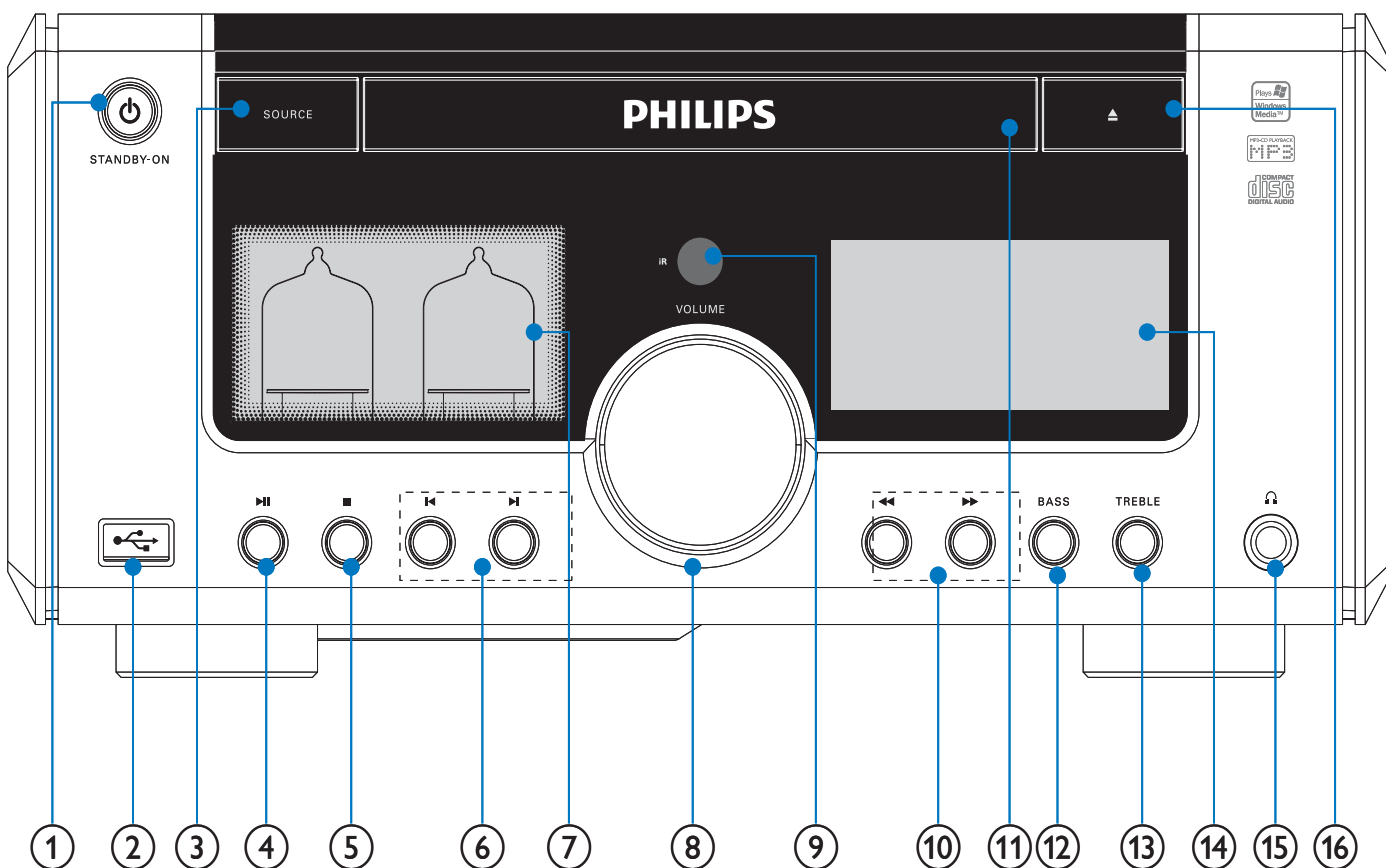
With built-in Hi-Fi tubes, you can now experience sound of the highest quality that is usually only associated with premium audiophile systems. The analog nature of the tubes provides a more pleasing sound to our non-linear hearing system. Sound from a tube has low distortion and is always preferred for its clean and detailed, warm and life-like audio quality.

What's in the box

Check and identify the contents of your package:

- Main unit
- Loudspeaker boxes x 2
- Speaker cables x 2
- Power cord
- Remote control with 2 AAA batteries
- FM wire antenna

Overview of the main unit



Caution

- Use of controls or adjustments or performance of procedures other than herein may result in hazardous radiation exposure or other unsafe operation.

① STANDBY-ON

- Turn on the audio system, switch to standby mode, or switch to Eco Power Standby.

②

- Socket for a USB mass storage device.

③ SOURCE

- Select a source: CD/MP3, USB, AUX or TUNER (FM).

④

- Start or pause play.

⑤

- Stop play or erase a program.

⑥

- Skip to the previous/next track.
- Select a preset radio station.

⑦ Vacuum tube

⑧ VOLUME

- Adjust volume.
- Adjust the bass/treble level.
- Adjust time.

⑨ IR sensor

⑩



- Search within a track or disc.
- Tune to a radio station.

⑪ Disc tray

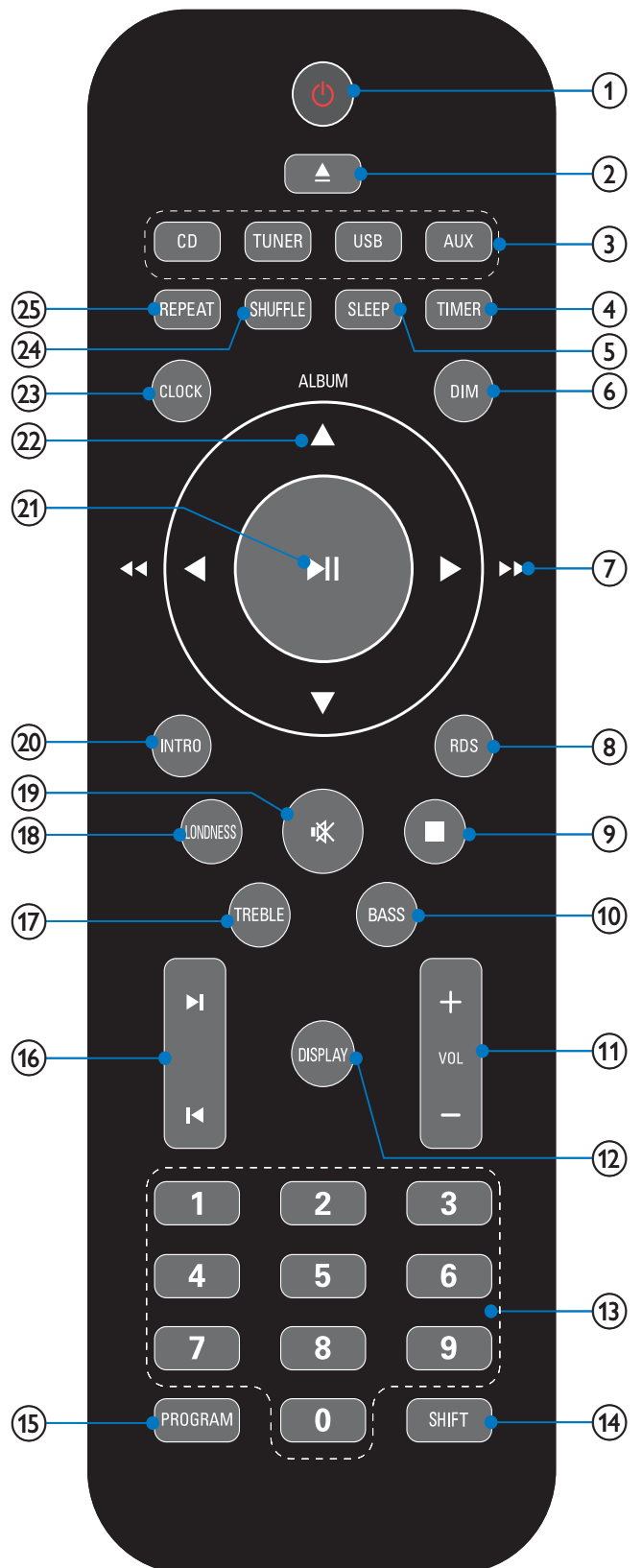
- Load a CD/MP3 disc.








⑫ BASS

- Turns on/off bass enhancement.

- ⑬ **TREBLE**
 - Turns on/off treble enhancement.
- ⑭ **Display panel**
 - Show current status.
- ⑮ 
 - Connect headphones.
- ⑯ 
 - Eject or close the disc tray.

Overview of the remote control



- ① 
 - Turn on the audio system, switch to standby mode, or switch to Eco Power Standby.
- ② 
 - Eject or close the disc tray.
- ③ **Source selection keys**
 - Select a source: CD/MP3, USB, AUX or TUNER (FM).
- ④ **TIMER**
 - Set the alarm timer.
- ⑤ **SLEEP**
 - Set the sleep timer.
- ⑥ **DIM**
 - Adjust brightness of the display panel.
- ⑦ 
 - Search within a track or disc.
 - Tune to a radio station.
- ⑧ **RDS**
 - Display available RDS (Radio Data System) information of an FM radio station.
- ⑨ 
 - Stop play or erase a program.
- ⑩ **BASS**
 - Turns on/off bass enhancement.
- ⑪ **VOL +/-**
 - Adjust volume.
 - Adjust time.
- ⑫ **DISPLAY**
 - During disc/USB play, select various information display modes.
- ⑬ **Numeric keypad**
 - Select a track from a disc directly.
- ⑭ **SHIFT**
 - Enter a 2 or 3-digit number (used together with the numeric keypad).
- ⑮ **PROGRAM**
 - Program tracks.
 - Program radio stations.
- ⑯ 
 - Skip to the previous/next track.
 - Select a preset radio station.
- ⑰ **TREBLE**
 - Turns on/off treble enhancement.
- ⑱ **LOUDNESS**
 - Enable or disable automatic loudness adjustment for bass and treble enhancement.
- ⑲ 
 - Mute volume.
- ⑳ **INTRO**
 - Scan all tracks.
- ㉑ 
 - Start or pause play.
- ㉒ **ALBUM/▲▼**
 - Skip to the previous/next album.
- ㉓ **CLOCK**
 - Set the clock.
- ㉔ **SHUFFLE**
 - Play tracks randomly.
- ㉕ **REPEAT**
 - Select a repeat play mode.

3 Get started

! Caution

- Use the controls only as stated in this user manual.

Always follow the instructions in this chapter in sequence.

If you contact Philips, you will be asked for the model and serial number of your audio system. The model number and serial number are on the bottom of your audio system. Write the numbers here:

Model No. _____

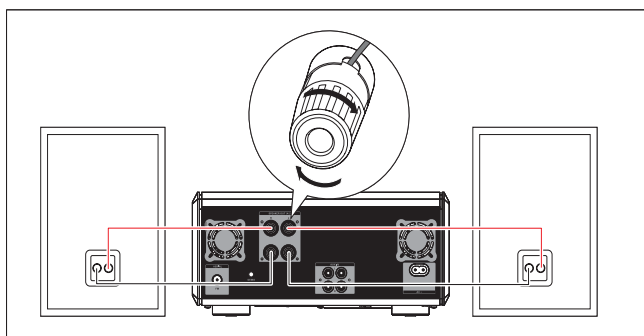
Serial No. _____

Connect speakers

≡ Note

- Insert the stripped portion of each speaker wire into the socket completely.
- For optimal sound, use the supplied speakers only.
- Connect only speakers with impedance that is the same or higher than the supplied speakers (see 'Specifications' on page 22).
- The **DEMO** jack is only applicable to the demo unit that is not included in the audio system. Do not attempt to connect any other device to the audio system through this jack.

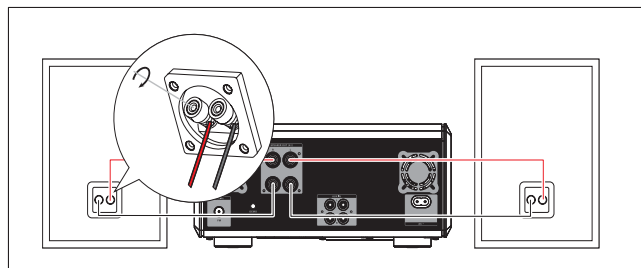
For the main unit:



- 1 Unscrew the speaker connectors.
- 2 Insert fully the red end of a speaker cable into the left red (+) connector.

- 3 Screw the left red (+) connector to secure the cable.
- 4 Insert fully the silver end of a speaker cable into the left black (-) connector.
- 5 Screw the left black (-) connector to secure the cable.
- 6 Repeat steps 2-5 to insert the other speaker cable into the right connectors.

For the speakers:



- 1 Unscrew the speaker connectors.
- 2 For the left speaker, identify the speaker cable that is connected to the left connectors on the main unit.
- 3 Insert fully the red end of the speaker cable into the red (+) connector.
- 4 Screw the red (+) connector to secure the cable.
- 5 Insert fully the silver end of the speaker cable into the black (-) connector.
- 6 Screw the black (-) connector to secure the cable.
- 7 Repeat steps 2-6 for the right speaker.

Connect FM antenna

Tip

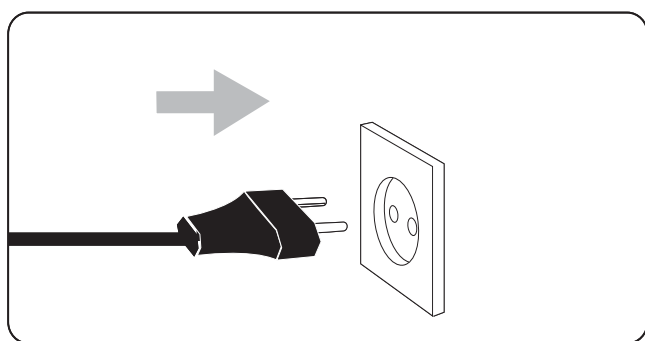
- For optimal reception, fully extend and adjust the position of the antenna.
- For better FM stereo reception, connect an outdoor FM antenna to the **FM ANTENNA** jack.
- The audio system does not support MW radio reception.

- 1 Connect the supplied FM antenna to the **FM ANTENNA** jack on the main unit.

Connect power

Caution

- Risk of product damage! Ensure that the power supply voltage corresponds to the voltage printed on the back or the underside of the audio system.
- Risk of electric shock! When you unplug the AC power cord, always pull the plug from the socket. Never pull the cord.
- Before connecting the AC power cord, ensure you have completed all other connections.



- 1 Connect the power cord to the wall outlet.

Prepare the remote control

Caution

- Risk of explosion! Keep batteries away from heat, sunshine or fire. Never discard batteries in fire.

- 1 Open the battery compartment.
- 2 Insert 2 AAA batteries with correct polarity (+/-) as indicated.
- 3 Close the battery compartment.

Note

- Before pressing any function button on the remote control, first select the correct source with the remote control instead of the main unit.
- If you are not going to use the remote control for a long time, remove the battery.

Set clock


- 1 In the standby mode, press and hold **CLOCK** to activate the clock setting mode.
 - ↳ The hour digits are displayed and begin to blink.
 - ↳ If the hour digits are not displayed, press and hold **⏻** for more than 2 seconds to switch to standby mode, then repeat step 1.
- 2 Press **+VOL -** to set the hour.
 - ↳ The minute digits are displayed and begin to blink.
- 3 Press **+VOL -** to set the minute.
- 4 Press **CLOCK** to confirm the clock setting.

Turn on


- 1 Press **⏻**.

- ↳ The audio system takes 10 seconds to heat up before it turns on.
- ↳ The audio system switches to the last selected source.

Switch to standby mode

- 1 Press  to switch the audio system to Eco Power Standby mode.
 - ↳ The backlight on the display panel turns off.
 - ↳ The blue Eco Power indicator turns on.

To switch the audio system to standby mode:

- 1 In Eco Power Standby mode, press and hold  for more than 3 seconds.
 - ↳ The clock (if set) appears on the display panel.
 - ↳ The blue Eco Power indicator turns off.

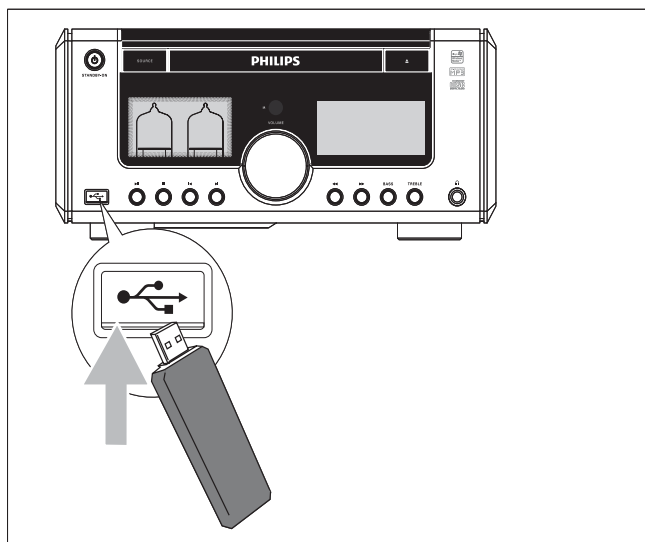
4 Play disc/USB

- 4 Press **ALBUM/▲▼** to select a folder.
- 5 Press **◀/▶** to select a file.
- 6 Press **▶||** to start play.

Play from disc


- 1 Press **CD** to select the CD source.
- 2 Press **▲**.
↳ The disc tray opens.
- 3 Place a disc onto the tray and press **.**
↳ Ensure that the label is facing upwards.
- 4 Play starts automatically.
 - If play does not start, press **◀/▶** to select a track and then press **▶||**.

Play from USB



Note

- Ensure that the USB device contains playable music (see 'USB playability information' on page 23).

- 1 Flip open the cover marked  on the front panel.
- 2 Insert the USB plug of a USB device into the exposed socket.
- 3 Press **USB** to select the USB source.
↳ The total number of tracks is displayed.

5 Control play

Skip to a track

For CD:

- 1 Press **◀/▶** to select another track.
 - To select a track directly, you can also press a key on the numerical keypad.



Tip

- To enter a 2 or 3-digit number, press **SHIFT**, then enter the number.

For MP3 disc and USB:

- 1 Press **ALBUM/▲▼** to select an album or folder.
- 2 Press **◀/▶** to select a track or file.

Pause/resume play

- 1 During play, press **▶||** to pause/resume play.

Display play information

For CD:

- 1 Press **DISPLAY** repeatedly to see the following information.
 - ↳ The track number and elapsed play time of the current track
 - ↳ The track number and remaining play time of the current track
 - ↳ The track number and total remaining play time

For MP3 disc:

- 1 Press **DISPLAY** to display ID3 information (if available).

Repeat play

- 1 During play, press **REPEAT** repeatedly to select:
 - ↳ **[REPEAT]** (repeat): play the current track repeatedly.
 - ↳ **[REPEAT ALL]** (repeat all): play all tracks repeatedly.
 - ↳ **[REPEAT]** (repeat) and **[ALB]** (album) (for MP3 and USB only): play the current album repeatedly.
- 2 To return to normal play, press **REPEAT** until the selected function is no longer displayed.

Random play

- 1 Press **SHUFFLE**.
 - ↳ All tracks are played randomly.
- 2 To return to normal play, press **SHUFFLE** again.



Tip

- The repeat and shuffle functions cannot be activated at the same time.

Program tracks

You can program a maximum of 20 tracks.

- 1 Press **PROGRAM** to activate the programming mode.
 - ↳ A track number flashes.
- 2 For MP3 tracks, first press **ALBUM/▲▼** to select the album that contains the track.
- 3 Press **◀/▶** to select a track number to program, then press **PROGRAM** to confirm.
 - ↳ **[P-X]** is displayed, where 'X' is the next position in the program.

- 4 Repeat steps 2 to 3 to select and store all tracks to program.
- 5 Press **PROGRAM** to complete.
↳ **[PROG]** (program) is displayed.
- 6 Press **▶||** to play the programmed tracks.
 - To erase the program, press **PROGRAM**.

Scan all tracks

- 1 Press **INTRO** to play the first 10 seconds of each track one by one.
 - To stop scan, press **INTRO** again.

Search within a track

- 1 During play, press and hold **◀▶** (**◀◀▶▶**).
- 2 Release to resume normal play.

6 Adjust volume level and sound effect



Note

- You cannot use the DSC, bass/treble and Loudness features at the same time.

Adjust volume level

- 1 During play, press **VOL +/-** to increase/decrease the volume level.

Enhance bass

- 1 During play, press **BASS** to turn on bass enhancement.
- 2 Within 5 seconds, turn **VOLUME** to adjust the bass level.

To turn off:

- 1 Press **BASS** again.

Enhance treble

- 1 During play, press **TREBLE** to turn on treble enhancement.
- 2 Within 5 seconds, turn **VOLUME** to adjust the treble level.

To turn off:

- 1 Press **TREBLE** again.

Select automatic loudness control


The loudness feature enables the system to increase the treble and bass sound effect at low volume automatically (the higher the volume, the lower the treble and bass increase).

- 1 During play, press **LOUDNESS** to turn on/off automatic loudness control.

Mute sound

- 1 During play, press **MUTE** to mute/unmute sound.

Listen through headphone

- 1 Plug a headphone into the  socket on the audio system.

7 Tune to FM radio stations

- 1 Ensure that you have connected and fully extended the supplied FM antenna.
- 2 Press **TUNER**.
- 3 Press and hold **◀▶** (**◀▶▶▶**).
- 4 When **[SEARCH]** (search) is displayed, release the button.
 - ↳ The FM tuner tunes to a station with strong reception automatically.
- 5 Repeat steps 3-4 to tune to more stations.

To tune to a weak station:

Press **◀▶** (**◀▶▶▶**) repeatedly until you find optimal reception.

Program radio stations automatically

Note

- You can program a maximum of 20 preset radio stations.

- 1 Press **◀▶▶▶** to select a preset number to start programming.
- 2 Press and hold **PROGRAM** for 2 seconds to activate automatic programming.
 - ↳ **[AUTO]** (auto) appears.
 - ↳ All available stations are programmed in the order of waveband reception strength.
 - ↳ The last programmed radio station is broadcast automatically.

Program radio stations manually

Note

- You can program a maximum of 20 preset radio stations.

- 1 Tune to a radio station.
- 2 Press **PROGRAM** to activate programming.
- 3 Press **◀▶▶▶** to allocate a number from 1 to 20 to this radio station, then press **PROGRAM** to confirm.
 - ↳ The preset number and the frequency of the preset station are displayed.
- 4 Repeat the above steps to program other stations.

Note

- To overwrite a programmed station, store another station in its place.

Tune to a preset radio station

- 1 Press **◀▶▶▶** to select a preset number that you want.

Tip

- You can also use the numerical keypad to select a preset station directly.
- To enter a 2 or 3-digit number, press **SHIFT**, then enter the number.

Set RDS clock

You can use time signal broadcast together with the RDS signal to set the clock of the audio system automatically.

- 1 Tune to a RDS radio station that transmits time signals.
 - ↳ The audio system reads the RDS time and sets the clock automatically.

Note

- The accuracy of the transmitted time depends on the RDS station that transmits the time signal.

Show RDS information

RDS (Radio Data System) is a service that allows FM stations to show additional information. If you tune to a RDS station, a RDS icon and the station name are displayed. When automatic programming is used, RDS stations are programmed first.

- 1 Tune to a RDS station.
- 2 Press **RDS** repeatedly to scroll through the following information (if available):
 - ↳ Station name
 - ↳ Program type such as **[NEWS]** (news), **[SPORT]** (sport), **[POP M]** (pop music)...
 - ↳ Radio text messages
 - ↳ Frequency

Note

- There are definitions of RDS program types (see 'RDS program types' on page 24).

8 Use more of your audio system

Set the alarm timer

- 1 Ensure that you have set the clock correctly.
- 2 In standby mode, press and hold **TIMER**.
 - ↳ The hour digits are displayed and begin to blink.
- 3 Press **+VOL -** to set the hour.
 - ↳ The minute digits are displayed and begin to blink.
- 4 Press **+VOL -** to set the minute.
- 5 Press **TIMER** to confirm.
- 6 To activate the wake-up timer, press **+VOL -** to select **[ON]** (on).
 - ↳ A clock icon appears on the display.
 - ↳ The audio system turns on automatically at the set time and switches to the last selected source.
 - To deactivate the alarm timer, select **[OFF]** (off) at step 6.

Set the sleep timer

- 1 When the audio system is turned on, press **SLEEP** repeatedly to select a set period of time (in minutes).
 - ↳ The audio system turns off automatically after the set period of time.

Listen to other devices

Caution

- Before you connect other devices to the audio system, ensure that the AC power is unplugged.

Note

- If the device only provides a mono jack, connect it to the left jack on the audio system. Alternatively, you can also use a 'single to double' cinch cable.

You can listen to other devices through this audio system.

- 1 Connect the audio output sockets to the **AUX IN (L/R)** sockets on this audio system.

9 Product information

Note

- Product information is subject to change without prior notice.

Specifications

Amplifier

Rated Output Power	2X75W RMS
Frequency Response	40 - 20000 Hz, ± 3 dB
Signal to Noise Ratio	>65dB
Aux Input	0.5 V RMS 20kohm

Disc

Laser Type	Semiconductor
Disc Diameter	12cm/8cm
Support Disc	CD-DA, CD-R, CD-RW, MP3-CD, WMA-CD
Audio DAC	24Bits / 44.1kHz
Total Harmonic Distortion	<1%
Frequency Response	40Hz - 20kHz (44.1kHz)
S/N Ratio	>65dBA

Tuner (FM)

Tuning Range	87.5 - 108MHz
Tuning grid	50KHz
Sensitivity	
- Mono, 26dB S/N Ratio	<22 dBf
- Stereo, 46dB S/N Ratio	>43 dBf
Search Selectivity	>28dBf
Total Harmonic Distortion	<3%
Signal to Noise Ratio	>55dB

Speakers

Speaker Impedance	4ohm
Speaker Driver	5.25" woofer + 1" tweeter
Sensitivity	>82dB/m/W

General information

AC power	220 - 230V, 50Hz
Operation Power Consumption	60W
Standby Power Consumption	<11W
Eco Standby Power Consumption	<1W
Audio Output	1Vpp \pm 0.1Vpp 3.5kohm
Headphone output	2X15mW 32ohm
USB Direct	Version 2.0
Dimensions	
- Main Unit (W x H x D)	280 x 130 x 290mm
- Speaker Box (W x H x D)	185 x 305 x 225mm
Weight	
- With Packing	16 kg
- Main Unit	5 kg
- Speaker Box	2 x 4.5 kg

USB playability information

Compatible USB devices:

- USB flash memory (USB 2.0 or USB1.1)
- USB flash players (USB 2.0 or USB1.1)
- memory cards (requires an additional card reader to work with this audio system)

Supported formats:

- USB or memory file format FAT12, FAT16, FAT32 (sector size: 512 bytes)
- MP3 bit rate (data rate): 32-320 Kbps and variable bit rate
- WMA v9 or earlier
- Directory nesting up to a maximum of 8 levels
- Number of albums/ folders: maximum 99
- Number of tracks/titles: maximum 999
- ID3 tag v2.0 or later
- File name in Unicode UTF8 (maximum length: 128 bytes)

Unsupported formats:

- Empty albums: an empty album is an album that does not contain MP3/ WMA files, and is not be shown in the display.
- Unsupported file formats are skipped. For example, Word documents (.doc) or MP3 files with extension .dlf are ignored and not played.
- AAC, WAV, PCM audio files
- DRM protected WMA files (.wav, .m4a, .m4p, .mp4, .aac)
- WMA files in Lossless format

Supported MP3 disc formats

- ISO9660, Joliet
- Maximum title number: 512 (depending on file name length)
- Maximum album number: 255
- Supported sampling frequencies: 32 kHz, 44.1kHz, 48 kHz
- Supported Bit-rates: 32~256 (kbps), variable bit rates

RDS program types

NO TYPE	No RDS programme type
NEWS	News services
AFFAIRS	Politics and current affairs
INFO	Special information programs
SPORT	Sports
EDUCATE	Education and advanced training
DRAMA	Radio plays and literature
CULTURE	Culture, religion and society
SCIENCE	Science
VARIED	Entertainment programs
POP M	Pop music
ROCK M	Rock music
MOR M	Light music
LIGHT M	Light classical music
CLASSICS	Classical music
OTHER M	Special music programs
WEATHER	Weather
FINANCE	Finance
CHILDREN	Children's programs
SOCIAL	Social Affairs
RELIGION	Religion
PHONE IN	Phone In
TRAVEL	Travel
LEISURE	Leisure
JAZZ	Jazz Music
COUNTRY	Country Music
NATION M	National Music
OLDIES	Oldies Music
FOLK M	Folk Music
DOCUMENT	Documentary
TES	Alarm Test
ALARM	Alarm

10 Troubleshooting



Caution

- Never remove the casing of this audio system.

To keep the warranty valid, never try to repair the system yourself.

If you encounter problems when using this audio system, check the following points before requesting service. If the problem remains unsolved, go to the Philips web site (www.Philips.com/support). When you contact Philips, ensure that your audio system is nearby and the model number and serial number are available (see 'Get started' on page 12).

No power

- Ensure that the AC adaptor of the audio system is connected properly.
- Ensure that there is power at the AC outlet.
- As a power-saving feature, the system switches off automatically 15 minutes after track play reaches the end and no control is operated.

No sound or poor sound

No sound or poor sound

- Adjust the volume.
- Disconnect the headphones.
- Check that the speakers are connected correctly.
- Check if the stripped speaker wires are clamped.
- Disconnect the headphone.

Left and right sound outputs reversed

- Check the speaker connections and location.

No response from the audio system

- Disconnect and reconnect the AC power plug, then turn on the system again.

- As a power-saving feature, the system switches off automatically 15 minutes after track play reaches the end and no control is operated.

Remote control does not work

- Before pressing any function button, first select the correct source with the remote control instead of the main unit.
- Reduce the distance between the remote control and the audio system.
- Insert the battery with its polarities (+/- signs) aligned as indicated.
- Replace the battery.
- Aim the remote control directly at the sensor on the front of the audio system.

No disc detected

- Insert a disc.
- Check if the disc is inserted upside down.
- Wait until the moisture condensation at the lens has cleared.
- Replace or clean the disc.
- Use a finalized CD or correct format disc.

Cannot display some files in USB device

- The number of folders or files in the USB device has exceeded a certain limit. This phenomenon is not a malfunction.
- The formats of these files are not supported.

USB device not supported

- The USB device is incompatible with the audio system. Try another one.

Poor radio reception

- Increase the distance between the audio system and your TV or VCR.
- Fully extend the FM antenna.
- Connect an outdoor FM antenna instead.

Timer does not work

- Set the clock correctly.
- Switch on the timer.

Clock/timer setting erased

- Power has been interrupted or the power cord has been disconnected.
- Reset the clock/timer.

