

Quick start guide



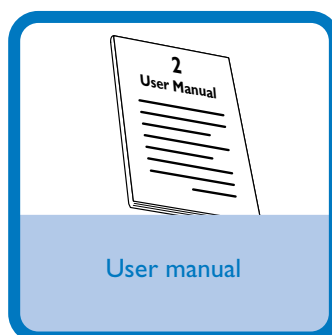
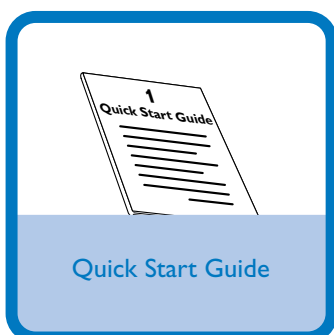
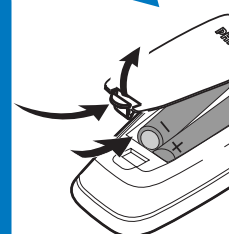
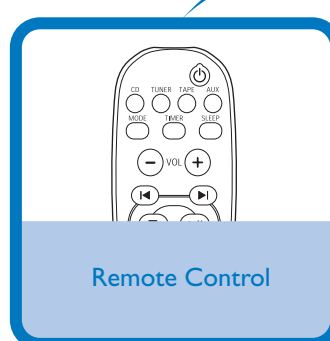
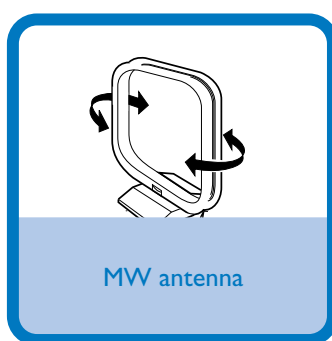
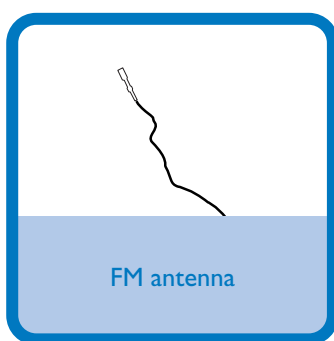
Step A *Connect*

Step B *Setup*

Step C *Enjoy*

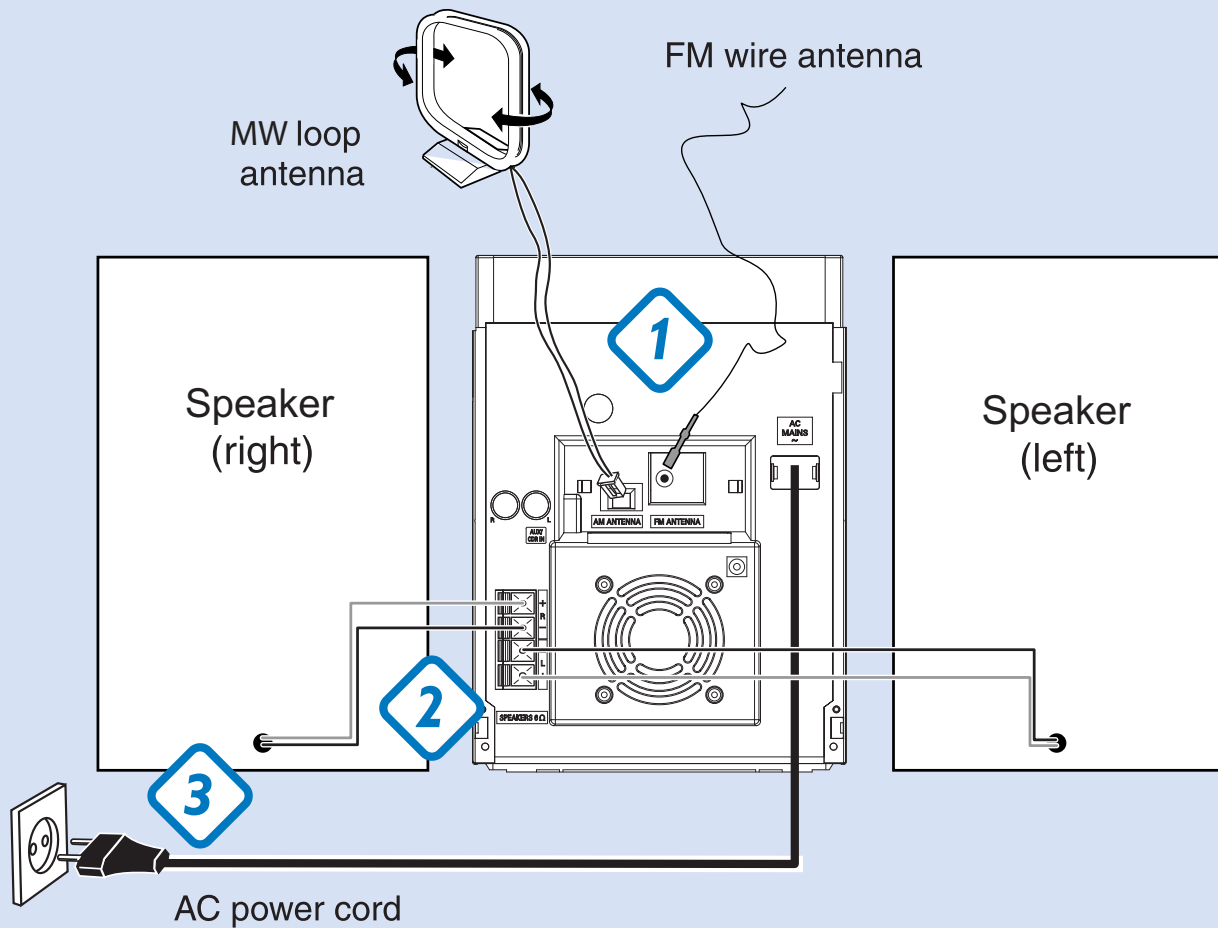
What's in the Box?

You should find these items upon opening the box.



Step A *Connect*

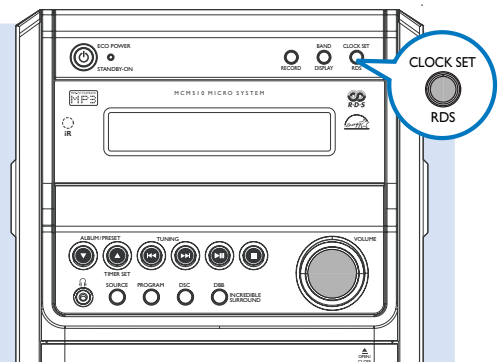
- 1 Connect the supplied **MW antenna** and **FM antenna** to the respective terminals.
- 2 Connect the speaker wires to the **SPEAKERS** terminals, right speaker to "**R**" and left speaker to "**L**", coloured (marked) wire to "**+**" and black (unmarked) wire to "**-**".
- 3 Connect the AC power cord to the wall socket.



Step B *Setup*

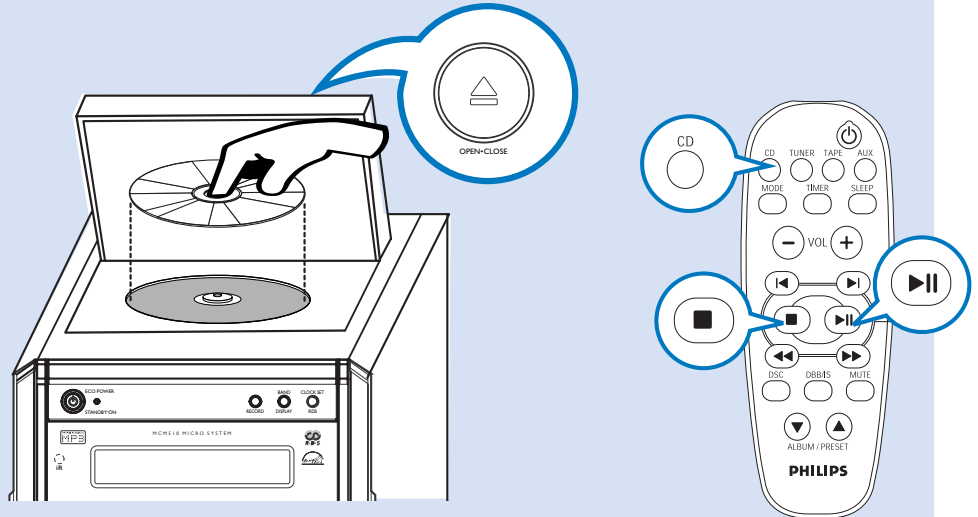
Setting the clock

- 1 In standby mode, press and hold **CLOCK SET/RDS** until clock digits for the hours flash.
- 2 Adjust **VOLUME** to set the hours and then press **CLOCK SET/RDS** again until the clock digits for the minutes flash.
- 3 Adjust **VOLUME** to set the minutes and finally press **CLOCK SET/RDS** to confirm the time.



Playing a disc

- 1 Select **CD** source and press **OPEN-CLOSE▲** on the top of the system to open the CD compartment.
- 2 Insert a disc with the printed side facing up and press **OPEN-CLOSE▲** to close the CD door.
- 3 Press **▶ ||** to start playback.
- 4 Press **■** to start playback.



Tip

Detailed playback features and additional functions are described in the accompany owner's manual.



Need help?

Online

Go to www.philips.com/support

2005 © Koninklijke Philips Electronics N.V. All rights reserved.

<http://www.philips.com>

