

Philips
Micro Hi-Fi System



MCM298

Unique Style - Great Sound - Wall Mountable

Trendy and progressive, unique innovation and style appeals to you. The vividly chic MCM298 with dynamic sound performance packed in a sleek design with MP3-CD playback that can also be wall mounted.

Longer listening, greater enjoyment

- 40 hours of MP3-CD music

Enrich your sound experience

- Digital Sound Control for optimized music style settings
- Dynamic Bass Boost for deep and dramatic sound
- 2x15W RMS/30W Total power
- Incredible Surround™ for enhanced audio enjoyment

Start the day your way

- Wake-Up and Sleep Timer
- Digital tuning with 40 preset stations for extra convenience

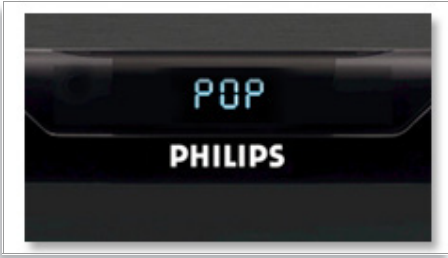
Watch your disc spin

- Front motorized CD door with viewing window
- Super sleek and flexible wall-mountable design

PHILIPS
sense and simplicity

Highlights

Digital Sound Control



Digital Sound Control offers you a choice of pre-set Jazz, Rock, Pop and Classic controls you can use to optimise the frequency ranges for different musical styles. Each mode uses graphic equalizing technology to automatically adjust the sound balance and enhance the most important sound frequencies in your chosen music style. Ultimately, Digital Sound Control makes it easy for you get the most out of your music by precisely adjusting the sound balance to match the type of music you are playing.

Dynamic Bass Boost



Dynamic Bass Boost maximizes your music enjoyment by emphasizing the bass content of the music throughout the range of volume settings - from low to high – at the touch of a button! Bottom-end bass frequencies usually get lost when the volume is set at a low level. To counteract this, Dynamic Bass Boost can be switched on to boost bass levels, so you can enjoy consistent sound even when you turn down the volume.

2x15W RMS/30W Total power

2x15W RMS/30W Total power

40 hours of MP3-CD music

40 hours of MP3-CD music

Incredible Surround™

Incredible Surround is an audio technology from Philips that dramatically magnifies the sound field to immerse you in the audio. Using state-of-the-art electronic phase shifting, Incredible Surround mixes sounds from left and right in such a way that it expands the virtual distance between the two speakers. This wider spread greatly enhances the stereo effect and creates a more natural sound dimension. Incredible Surround allows you to experience total surround with greater depth and width of sound, without the use of additional speakers.



Specifications

Sound

- Sound Enhancement: Digital Sound Control 4 modes, Dynamic Bass Boost, Incredible Surround
- Output power (RMS): 2 x 15 W

Loudspeakers

- Main Speaker: 2 way, Bass Reflex Speaker System, 4" woofer, 2" tweeter

Audio Playback

- Playback Media: CD, CD-R, CD-RW, MP3-CD
- Disc Playback Modes: 40-Track Programmable, Repeat/one/all/program, Shuffle Play
- Loader Type: Front, Motorised
- ID3-tag support
- Number of Discs: 4

Tuner/Reception/Transmission

- Tuner Bands: FM Stereo, AM
- Auto digital tuning
- Station presets: 40
- Tuner Enhancements: Auto Store

Connectivity

- Aux in: Line in
- Headphone: 3.5 mm

Convenience

- Alarms: CD Alarm, Radio Alarm, Sleep timer
- Clock: On main display
- Display Type: LCD
- Backlight color: Blue
- Eco Power Standby: 1 watt

Accessories

- Included Accessories: Wall mounting bracket, Guarantee booklet
- Remote control: 47-key with battery
- Quick start guide: Eng, Spa
- User Manual: Eng, Spa
- Warranty Card: Philips (USA) Product Registration Card

Dimensions

- Set dimensions (W x H x D): 450 x 335 x 115 mm
- Main speaker dimensions (W x H x D): 171 x 297 x 89 mm
- Packaging dimensions (W x H x D): 512 x 420 x 312 mm
- Weight incl. Packaging: 10.5 kg

Power

- Power supply: 120V, 60Hz



Issue date 2009-07-17

Version: 2.0.7

12 NC: 9073 100 13426
UPC: 6 09585 11458 6

© 2009 Koninklijke Philips Electronics N.V.
All Rights reserved.

Specifications are subject to change without notice.
Trademarks are the property of Koninklijke Philips
Electronics N.V. or their respective owners.

www.philips.com