

Docking Entertainment System

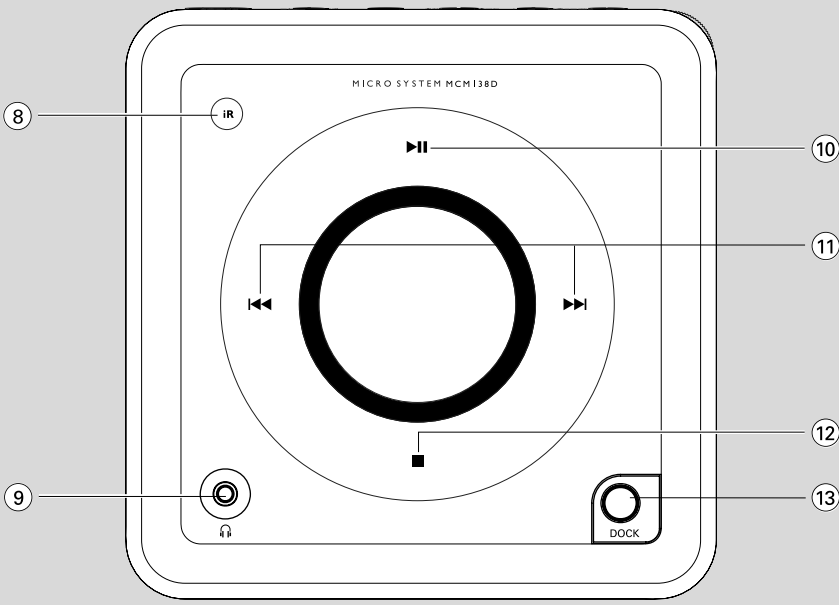
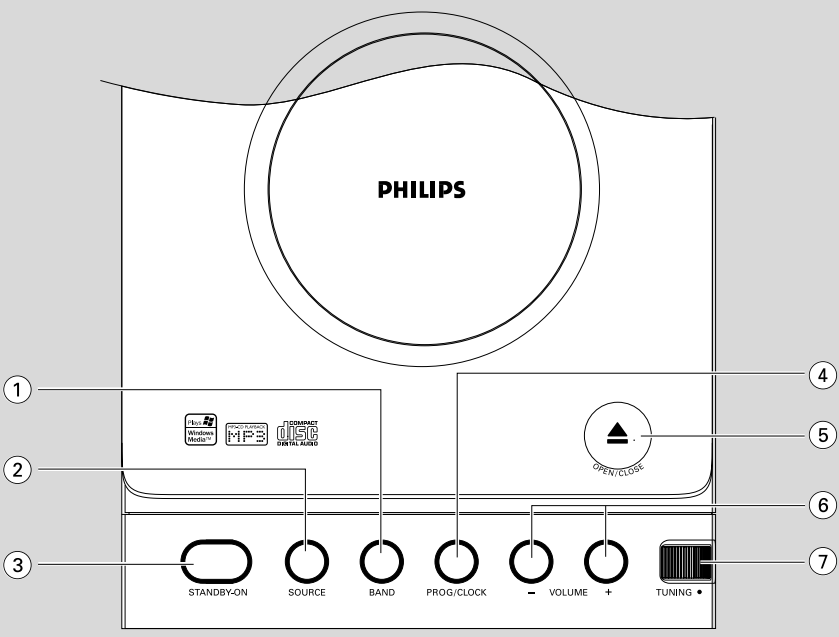
MCM138D

Register your product and get support at
www.philips.com/welcome

User manual



PHILIPS



Hearing Safety

Listen at a moderate volume.

- Using headphones at a high volume can impair your hearing. This product can produce sounds in decibel ranges that may cause hearing loss for a normal person, even for exposure less than a minute. The higher decibel ranges are offered for those that may have already experienced some hearing loss.
- Sound can be deceiving. Over time your hearing "comfort level" adapts to higher volumes of sound. So after prolonged listening, what sounds "normal" can actually be loud and harmful to your hearing. To guard against this, set your volume to a safe level before your hearing adapts and leave it there.

To establish a safe volume level:

- Set your volume control at a low setting.
- Slowly increase the sound until you can hear it comfortably and clearly, without distortion.

Listen for reasonable periods of time:

- Prolonged exposure to sound, even at normally "safe" levels, can also cause hearing loss.
- Be sure to use your equipment reasonably and take appropriate breaks.

Be sure to observe the following guidelines when using your headphones.

- Listen at reasonable volumes for reasonable periods of time.
- Be careful not to adjust the volume as your hearing adapts.
- Do not turn up the volume so high that you can't hear what's around you.
- You should use caution or temporarily discontinue use in potentially hazardous situations.
- Do not use headphones while operating a motorized vehicle, cycling, skateboarding, etc.; it may create a traffic hazard and is illegal in many areas.

English	6
---------------	---

CAUTION

Use of controls or adjustments or performance of procedures other than herein may result in hazardous radiation exposure or other unsafe operation.

Contents

General Information

Environmental information	7
Supplied accessories	7
Safety information	7

Preparation

Rear connections	8–9
Before using the remote control	9
Replacing battery (lithium CR2032) into the remote control	9

Controls

Controls on the system and remote control	10
--	----

Basic Functions

Switching the system on	11
Power-saving automatic standby	11
Adjusting volume and sound	11

CD/MP3/WMA Operation

Playing a disc	12
Basic playback controls	12
Playing an MP3/WMA disc	12
Different play modes: Shuffle and Repeat	13
Programming track numbers	13
Reviewing the programme	13
Erasing the programme	13

Radio Reception

Tuning to radio stations	14
--------------------------------	----

Clock/Timer

Setting the clock	15
Setting the timer	15
Activating and deactivating TIMER	15
Activating and deactivating SLEEP	15

DOCK

Playing iPod using the dock.....	16
Compatible portable player	
Dock	
Dock adaptor	
Selecting the correct dock adaptor	
Installing the dock adaptor	
Removing the dock adaptor.....	17
Playing iPod.....	17
Charging iPod battery using the dock	17

Troubleshooting

.....	18–19
-------	-------

Specifications

.....	20
-------	----

Maintenance

.....	20
-------	----

Congratulations on your purchase and welcome to Philips!

To fully benefit from the support that Philips offers, register your product at www.philips.com/welcome.

Supplied accessories

- 2 speaker boxes
- MCM138D remote control with battery
- MW loop antenna
- Docking kit
 - 1 dock used for both Apple iPod
 - Dock adaptors (4 adaptors for different iPod types)

Environmental Information

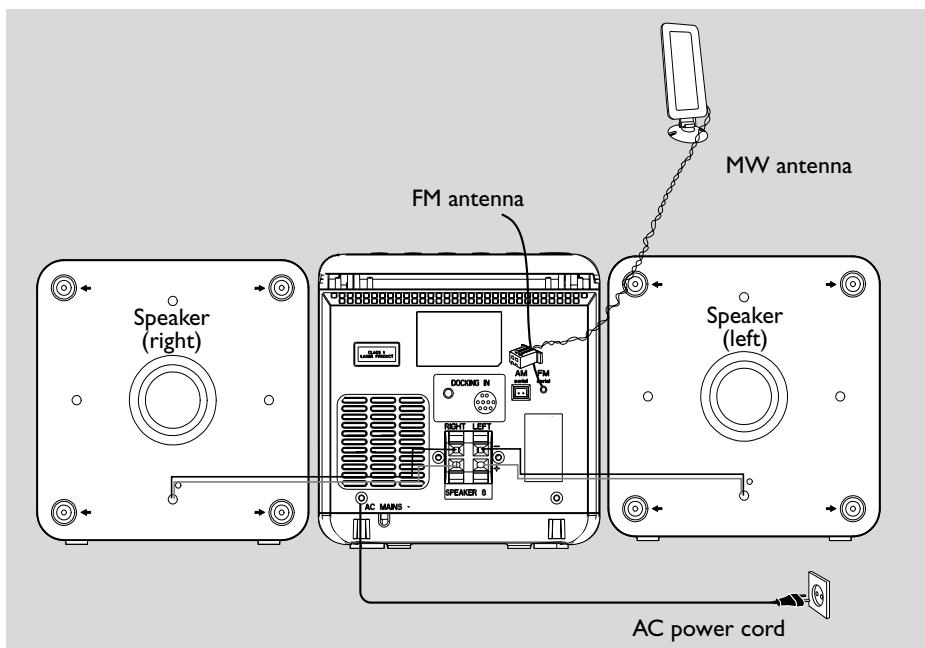
All unnecessary packaging has been omitted. We have tried to make the packaging easy to separate into three materials: cardboard (box), polystyrene foam (buffer) and polyethylene (bags, protective foam sheet).

Your system consists of materials which can be recycled and reused if disassembled by a specialized company. Please observe the local regulations regarding the disposal of packaging materials, exhausted batteries and old equipment.

Safety Information

- Before operating the system, check that the operating voltage indicated on the typeplate (or the voltage indication beside the voltage selector) of your system is identical with the voltage of your local power supply. If not, please consult your dealer.
- Place the system on a flat, hard and stable surface.
- Where the MAINS plug or an appliance coupler is used as the disconnet device, the disconnet device shall remain readily operable.
- Install the unit near the AC outlet and where the AC power plug can be easily reached.
- The apparatus shall not be exposed to dripping or splashing.
- Place the system in a location with adequate ventilation to prevent internal heat build-up in your system. Allow at least 10 cm (4 inches) clearance from the rear and the top of the unit and 5 cm (2 inches) from each side.
- The ventilation should not be impeded by covering the ventilation openings with items, such as newspapers, table-cloths, curtains, etc.
- Do not expose the system, batteries or discs to excessive moisture, rain, sand or heat sources caused by heating equipment or direct sunlight.
- No naked flame sources, such as lighted candles, should be placed on the apparatus.
- No objects filled with liquids, such as vases, shall be placed on the apparatus.
- If the system is brought directly from a cold to a warm location, or is placed in a very damp room, moisture may condense on the lens of the disc unit inside the system. Should this occur, the CD player would not operate normally. Leave the power on for about one hour with no disc in the system until normal playback is possible.
- The mechanical parts of the set contain self-lubricating bearings and must not be oiled or lubricated.
- Batteries (battery pack or batteries installed) shall not be exposed to excessive heat such as sunshine, fire or the like.
- **When the system is switched to Standby mode, it is still consuming some power. To disconnect the system from the power supply completely, remove the AC power plug from the wall socket.**

Preparations



Rear connections

The type plate is located at the rear of the system.

A Power

– Before connecting the AC power cord to the wall outlet, ensure that all other connections have been made.

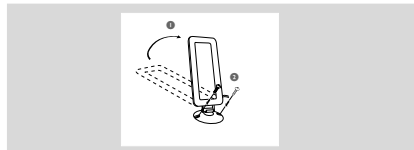
WARNING!

- For optimal performance, use only the original power cable.
- Never make or change any connections with the power switched on.

B Antennas Connection

AM (MW) antenna

- 1 Unfold the loop antenna and if necessary, use screws (not supplied) to fix it to a flat, hard and stable place:



- 2 Fit the plug of the loop antenna to AM ANTENNA as shown above.
- 3 Adjust the antenna for optimal reception

FM Antenna

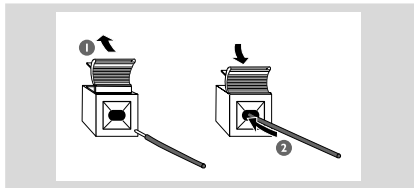
It is unnecessary to connect the FM pigtail antenna since it is fixed to the main unit.

- Position the antenna as far as possible from a TV, VCR or other radiation source.

Ⓒ Speakers Connection

Front Speakers

Connect the speaker wires to the SPEAKERS terminals, right speaker to "RIGHT" and left speaker to "LEFT", the wire (marked red) to "+" and the wire (marked black) to "-".



- Fully insert the stripped portion of the speaker wire into the terminal as shown.

Notes:

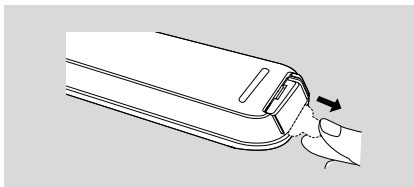
– For optimal sound performance, use the supplied speakers.

– Do not connect more than one speaker to any one pair of + / - speaker terminals.

– Do not connect speakers with an impedance lower than the speakers supplied. Please refer to the SPECIFICATIONS section of this manual.

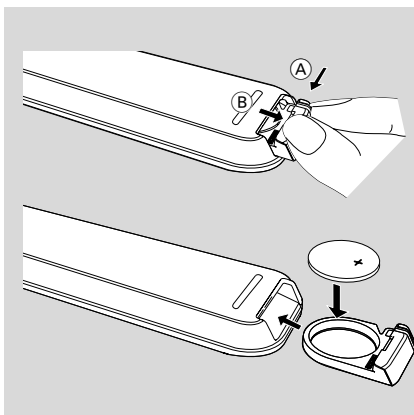
Before using the remote control

- 1 Pull out the plastic protective sheet.
- 2 Select the source you wish to control by pressing one of the source select keys on the remote control (for example CD, TUNER).
- 3 Then select the desired function (for example ▶, ◀, ▶|).



Replacing battery (lithium CR2032) into the remote control

- 1 Pull out the knob (A) slightly to the left.
- 2 Pull out the battery compartment (B).
- 3 Replace a new battery and fully insert the battery compartment back to the original position.



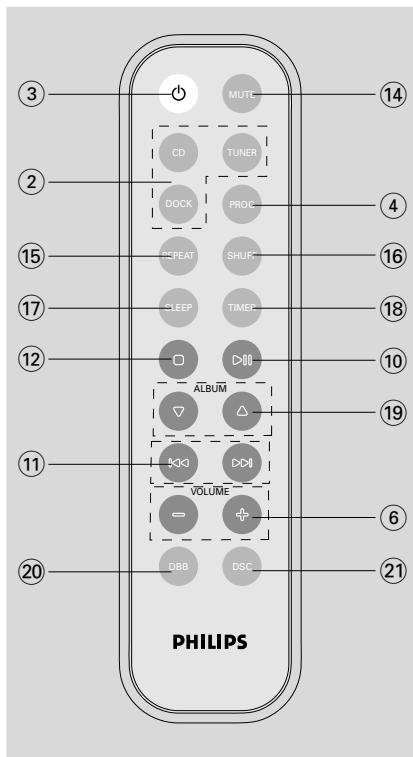
CAUTION!

Batteries contain chemical substances, so they should be disposed off properly.

Controls on the system and remote control

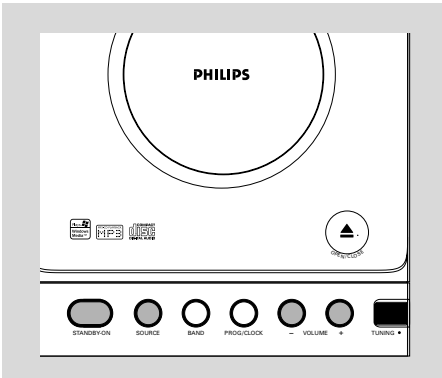
- ① **BAND**
 - for Tuner..... (on the set only) selects waveband.
- ② **SOURCE (CD/TUNER/DOCK)**
 - switches on the system.
 - selects the respective sound source for CD/ FM/ MW/ DOCK.
- ③ **STANDBY-ON / ⏻**
 - switches the system to standby/on.
- ④ **PROG/CLOCK**
 - for CD programs tracks and reviews the program.
 - for clock sets the clock function.
- ⑤ **OPEN-CLOSE**
 - opens/closes the CD door.
- ⑥ **VOLUME - / +**
 - adjusts volume level.
- ⑦ **TUNING ●**
 - tunes to radio stations.
- ⑧ **iR SENSOR**
 - infrared sensor for remote control.
- ⑨ **🎧**
 - connect headphones.
- ⑩ **▶ ||**
 - for CD starts or pauses CD playback.
- ⑪ **◀◀ / ▶▶**
 - skips to the beginning of a current track/ previous/ next track.
 - fast searches back and forward within a track/ CD.
- ⑫ **STOP ■**
 - stops CD playback or erase a CD program.
- ⑬ **DOCK**
 - selects sound source of DOCK
- ⑭ **MUTE**
 - switches playback sound off and on.
- ⑮ **REPEAT**
 - repeats a track/ disc/all programmed tracks.
- ⑯ **SHUFF (SHUFFLE)**
 - plays CD/MP3 tracks in random order.
- ⑰ **SLEEP**
 - activates/deactivates or selects the sleeper time.

- ⑱ **TIMER**
 - activates/deactivates or sets the timer function.
- ⑲ **ALBUM ▼ ▲**
 - for MP3/WMA discselects an album.
- ⑳ **DBB**
 - (Dynamic Bass Boost) enhances the bass.
- ㉑ **DSC**
 - (Digital Sound Control) selects sound characteristics: JAZZ/POP/CLASSIC/ROCK.



Notes for remote control:

- First select the source you wish to control by pressing one of the source select keys on the remote control (for example CD , TUNER).
- Then select the desired function (for example ▶ , ◀ , ▶▶).



IMPORTANT:

Before you operate the system, complete the preparation procedures.

Switching the system on

- In standby, press **STANDBY-ON** (⏻ on the remote control).
→ The system will switch to the last selected source.
- Press **SOURCE** (CD, TUNER or DOCK on the remote control).
→ The system will switch to the selected source.

To switch the system to standby mode

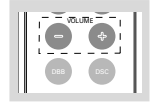
- Press **STANDBY-ON** (⏻ on the remote control).
→ The clock is displayed.

Power-saving automatic standby

The power-saving feature automatically switches to standby 15 minutes after a CD/iPod playback has ended and no control is operated.

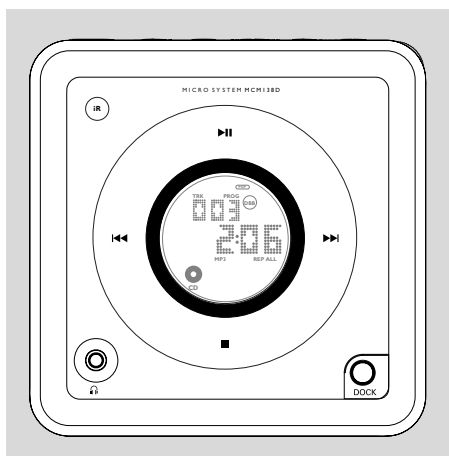
Adjusting volume and sound

- 1 Press **VOLUME - / +** to increase or decrease volume.
→ Display shows the volume level and a number from 0-32.
- 2 Press **DSC** repeatedly to select the desired sound effect:
JAZZ / POP / CLASSIC / ROCK.
- 3 Press **DBB** (on the remote control) to switch bass enhancement on or off.
→ Display shows: **DBB** if the DBB is activated.
- 4 Press **MUTE** on the remote control to stop sound play-back instantly.
→ Playback will continue without sound and the display shows **MUTE**.



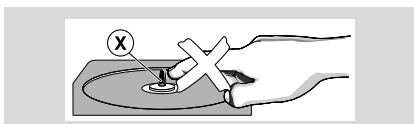
- To start sound playback you can:
 - press **MUTE** again;
 - adjust the volume controls;
 - change source.

CD/MP3/WMA Operation



IMPORTANT:

The lens of the CD player should never be touched.



Loading a disc

This CD player plays Audio Discs including CD-Recordables, CD-Rewritables, MP3 CD and WMA CD.



- CD-ROM, CD-I, CDV, VCD, DVD or computer CDs, however, are not possible.
- DRM-protected WMA is not supported.

- 1 Select **CD** source.
- 2 Press **OPEN/CLOSE▲** on the top of the system to open the CD compartment.
→ **OPEN** is displayed when you open the CD compartment.
- 3 Insert a disc with the printed side facing up and press down on **OPEN/CLOSE▲** to close the CD door.

→ **REPEAT** is displayed as the CD player scans the contents of a disc, and then the total number of tracks and playing time (or the total number of albums and tracks for MP3/WMA disc) are shown.

Basic playback controls

To play a disc

- Press **▶▶** to start playback.
→ The current track number and elapsed playing time of the track are displayed during disc playback.

To select a different track

- Press **◀◀ ▶▶** once or repeatedly until the desired track number appears in the display.

To find a passage within a track

- 1 Press and hold down on **◀◀ ▶▶**.
→ The disc is played at high speed and low volume.
- 2 When you recognise the passage you want, release **◀◀ ▶▶**.
→ Normal playback continues.

To interrupt playback

- Press **▶▶** during playback.
→ The display freezes and the elapsed playing time flashes when playback is interrupted.
→ To resume, press **▶▶** again.

To stop playback

- Press **■**.

Notes: CD play will also stop when;
– the CD door is opened.
– the disc has reached the end.
– you select another source: **TUNER**.
– you select standby

Playing an MP3/WMA disc

- 1 Load an MP3/WMA disc.
→ The disc reading time may exceed 10 seconds due to the large number of songs compiled into one disc.
→ "×××× 000" is displayed. ×××× is the current track number and 000 is the current album number.
- 2 Press **ALBUM ▼ ▲** to select a desired album..

- 3 Press **◀◀ ▶▶** to select a desired track.
→ The album number will change accordingly as you reach the first track of an album by pressing **◀◀** or the last track of an album by pressing **▶▶**.
- 4 Press **▶▶** to start playback.
- During playback, press once **ALBUM ▼ ▲** to show the current album number:

Supported MP3 disc formats:

- ISO9660, Joliet, UDF 1.5
- Maximum title number: 512 (depending on filename length)
- Maximum album number: 99
- Supported sampling frequencies: 32 kHz, 44.1 kHz, 48 kHz
- Supported Bit-rates: 32~256 (kbps), variable bitrates

Different play modes: SHUFFLE and REPEAT

You can select and change the various play modes before or during playback. The REPEAT modes can also be combined with PROGRAMME.

SHUFFLE tracks of the entire disc are played in random order

REPEAT ALL ... repeats the entire disc/ programme

REPEAT plays the current track continuously

REPEAT ALB ... repeats all tracks in the current (for MP3/WMA only) album

- 1 To select your play mode, press the **SHUFF** or **REPEAT** on the remote control before or during playback until the display shows the desired function.
- 2 Press **▶▶** (on the remote control **▶▶**) to start playback if in the STOP position.
→ If you have selected SHUFFLE, playback starts automatically.
- 3 To return to normal playback, press **SHUFF** or **REPEAT** on the remote control until the various SHUFFLE/ REPEAT modes are no longer displayed.
- You can also press **■** to cancel your play mode.

Notes:

- The **SHUFFLE** and **REPEAT** functions cannot be used simultaneously.
- **SHUFFLE** play is not available in the programme mode.

Programming track numbers

Programme in the STOP position to select and store your disc tracks in the desired sequence. If you like, store any track more than once. Up to 20 tracks can be stored in the memory.

- 1 In the stop position, use the **◀◀ ▶▶** to select your desired track number.
- For MP3/WMA, you may press **ALBUM ▼ ▲** to select a desired album, then press **◀◀ ▶▶** to select your desired track.
- 2 Press **PROGRAM** (or **PROG/CLOCK** on the set) to store.
→ Display: **PROG** flashes, and **PR 1** is displayed briefly, then the selected track number (and the selected album number for MP3/WMA).
- 3 Repeat **steps 1-2** to select and store all desired tracks.
→ **FULL** is displayed if you attempt to programme more than 20 tracks.
- 4 To start playback of your disc programme, press **▶▶**.

Reviewing the programme

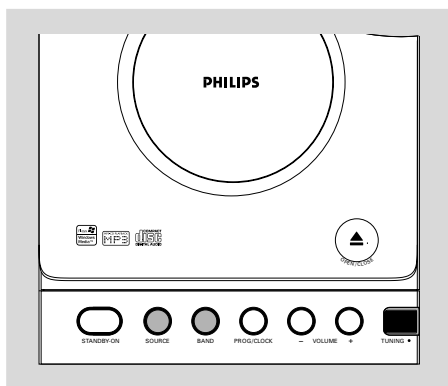
- Stop playback and press **PROGRAM** (or **PROG/CLOCK** on the set) repeatedly.
→ Display first shows a programme sequence, then the stored track number (and the album number for MP3/WMA).
- To exit review mode, press **■**.

Erasing the programme

You can erase the programme by:

- pressing **■** once in the STOP mode;
- pressing **■** twice during playback;
- opening the CD compartment;
- Select another sound source.
→ **PROG** disappears from the display.

Radio Reception



- 3 Turn **TUNING** ● to tune to a station.
→ Display shows: the frequency of the tuned station.

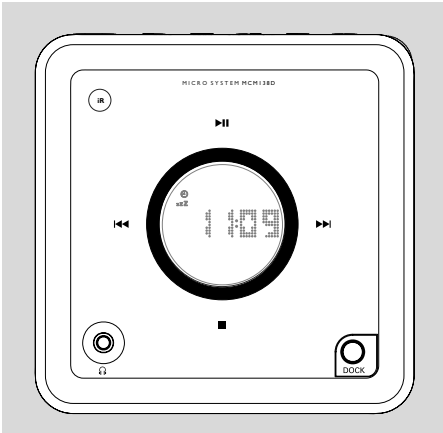
Helpful hints:

To improve radio reception:

- For **FM**, extend coil antenna at the back of the unit fully for optimum reception.

Tuning to radio stations

- 1 Select **TUNER** source.
→ ● is displayed.
- 2 Press **BAND** (**TUNER** on the remote control) once or more to select your waveband.



- 4 Press **◀◀ / ▶▶** to set the hours.
- 5 Press **TIMER** again.
→ The clock digits for the minutes flash.
- 6 Press **◀◀ / ▶▶** to set the minutes.
- 7 Press **TIMER** to confirm the time.
→ The timer is now set and actiated.

Notes:

- If source **CD** is selected and no disc is in the **CD** tray or the disc has an error, **TUNER** will be selected automatically.
- If source **DOCK** is selected and no **iPod** is docked or no dock connection is made, **TUNER** will be selected automatically.

Setting the clock

- 1 In Standby mode, press **PROG/CLOCK** button.
→ The clock digits for the hours flash.
- 2 Press **◀◀ / ▶▶** to set the hours.
- 3 Press **PROG/CLOCK** again.
→ The clock digits for the minutes flash.
- 4 Press **◀◀ / ▶▶** to set the minutes.
- 5 Press **PROG/CLOCK** to confirm the time.

Note:


– If the clock has not been set, – --:– will be displayed.

Setting the timer

- The system can be used as an alarm clock. **CD** or **TUNER** or **DOCK** can be set to switch on at a preset time. The clock time needs to be set first before the timer can be used.
- If no button is pressed within 90 seconds during timer setup, the system will exit timer setting mode automatically.

- 1 In standby or during playback, press **TIMER** on the remote control for more than 2 seconds.
- 2 Press **◀◀ / ▶▶** (or **CD/TUNER/DOCK** on the remote control) to select sound source.
- 3 Press **TIMER** to confirm your desired source.
→ The clock digits for the hours flash.

To activate and deactivate timer

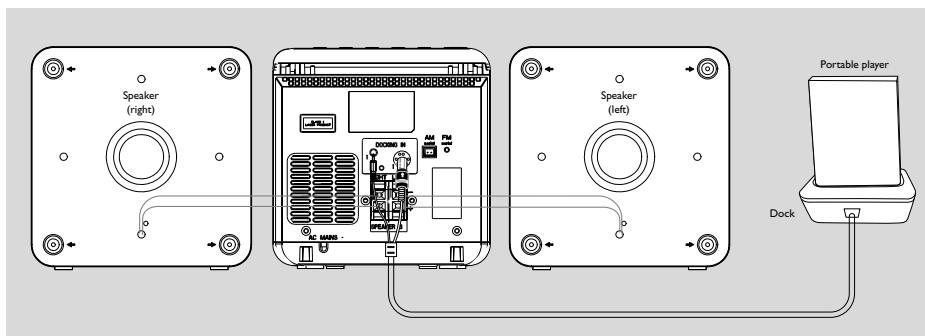
- In standby or during playback, press **TIMER** once.
→ Display shows  if activated, and disappears if deactivated.

Activating and deactivating SLEEP

The sleep timer enables the system to switch off by itself after a set period of time. The clock time needs to be set first before the sleep timer can be used.

- Press **SLEEP** on the remote control repeatedly to select desired time before system shuts off.
→ Display shows **SLEEP** and series of time options for selection: 60, 45, 30, 15, 0, 60 ...
- To deactivate, press **SLEEP** on the remote control once or more until " " is shown, or press **STANDBY ON** on the system or remote control.





Playing iPod using the dock

By connecting the supplied dock to your Hi-Fi system, you can listen to the sound of the docked player through the powerful speakers of the Hi-Fi system.

Compatible portable player

- Apple iPod models with 30-pin dock connector as follows:
Nano 1st /2nd/3rd generation, iPod 5th generation (video), iPod touch and iPod classic.

Dock

This system comes with a dock used for iPod. Connect the cable of the dock to the system to let the system and your iPod work together.

Dock adaptor

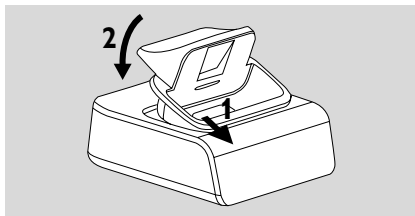
Before plugging your player in the dock, snap the suitable dock adaptor into the dock to provide a snug fit for the player to be docked.

Selecting the correct dock adaptor

- 4 iPod dock adaptors are included. Each adaptor has indication to match different iPod types.

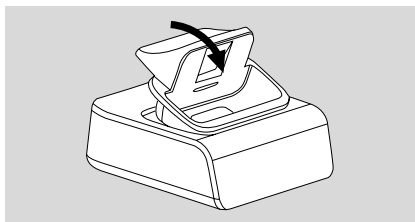
Installing the dock adaptor

- 1 Align two holes of the dock and two latches of the adaptor; then gently push in the adaptor until it clicks.



Removing the dock adaptor

- Slightly push down the dock adaptor, as indicated in the figure below, to un-latch the adaptor; then take it out.



Playing iPod

- 1 Select the dock adaptor of the correct type, and snap it into the dock (See “ **Dock adaptor** ”).
 - 2 Correctly place your iPod in the dock.
 - 3 Connect the cables of the dock to **DOCKING IN** jacks on the main set correspondingly.
 - 4 Press **SOURCE** repeatedly or **DOCK** to select DOCK source.
- The connected player will play automatically.

Notes:

- By using the buttons (▶||, ◀◀, ▶▶) and **VOLUME**) on the MCM138D and its remote control, the following iPod playback features are available: Play/Pause, selecting next/previous track, fast forwarding/rewinding and changing volume.
- The buttons (▶||, ◀◀, ▶▶) and **VOLUME**) on the MCM138D and its remote control can work only with playback of the audio contents stored on the docked player.
- Stop (■) function of disc playback is not available to the docked player.

Charging iPod battery using the dock

Docking your iPod and connecting the dock to MCM138D, you can charge the iPod in the standby mode and power-on mode of MCM138D.

Troubleshooting

WARNING

Under no circumstances should you try to repair the system yourself, as this will invalidate the warranty. Do not open the system as there is a risk of electric shock.

If a fault occurs, first check the points listed below before taking the system for repair. If you are unable to remedy a problem by following these hints, consult your dealer or service centre.

Problem	Solution
"NO CD" is displayed.	<ul style="list-style-type: none">✓ Insert a disc.✓ Check if the disc is inserted upside down.✓ Wait until the moisture condensation at the lens has cleared.✓ Replace or clean the disc, see "Maintenance".✓ Use a finalised CD-RW or CD-R, or a correct MP3-CD format disc.
Radio reception is poor.	<ul style="list-style-type: none">✓ If the signal is too weak, adjust the antenna for better reception.✓ Increase the distance between the Micro HiFi System and your TV or VCR.
The system does not react when buttons are pressed.	<ul style="list-style-type: none">✓ Remove and reconnect the AC power plug and switch on the system again.
Sound cannot be heard or is of poor quality	<ul style="list-style-type: none">✓ Adjust the volume.✓ Disconnect the headphones.✓ Check that the speakers are connected correctly.✓ Check if the stripped speaker wire is clamped.✓ Make sure the MP3-CD was recorded within 32-256 kbps bit rate with sampling frequencies at 48 kHz, 44.1 kHz or 32 kHz.
The left and right sound outputs are reversed.	<ul style="list-style-type: none">✓ Check the speaker connections and location.
The remote control does not function properly.	<ul style="list-style-type: none">✓ Select the source (CD or TUNER, for example) before pressing the function button (▶, ◀, ►).✓ Reduce the distance between the remote control and the system.✓ Insert the batteries with their polarities (+/- signs) aligned as indicated.✓ Replace the batteries.✓ Point the remote control directly toward IR sensor on the front of the system.

Problem	Solution
<p>The timer is not working.</p>	<ul style="list-style-type: none"> ✓ Set the clock correctly. ✓ Press TIMER to switch on the timer.
<p>The Clock/Timer setting is erased.</p>	<ul style="list-style-type: none"> ✓ Power has been interrupted or the power cord has been disconnected. Reset the clock/timer.
<p>The menu navigation or photo playback of the docked player cannot be carried out through the buttons on MCM138D or its remote control.</p>	<ul style="list-style-type: none"> ✓ The buttons on MCM138D and its remote control can only control playback of audio contents. To navigate the menu, use the controls on the docked player:
<p>The STOP ■ and some buttons on MCM138D and its remote control have no function.</p>	<ul style="list-style-type: none"> ✓ The playback of the docked player cannot be stopped using the STOP ■ button on MCM138D and its remote control. ✓ The buttons (▶ , ◀◀, ▶▶ and VOLUME) can function only.

Specifications

AMPLIFIER

Output power 2 x 2W
..... 4W total power
Signal-to-noise ratio ≥ 62 dBA (IEC)
Frequency response 125 – 16000 Hz, ± 3 dB
Impedance loudspeakers 8 Ω
Impedance headphones 32 Ω

CD PLAYER

Frequency range 20 – 20000 Hz
Signal-to-noise ratio 62 dBA

TUNER

FM wave range 87.5 – 108.5 MHz
MW wave range 525 – 1620 kHz
Sensitivity at 75 Ω
– mono, 26 dB signal-to-noise ratio 3.8 μ V
– stereo, 46 dB signal-to-noise ratio 61.4 μ V
Selectivity ≥ 28 dB
Total harmonic distortion $\leq 5\%$
Frequency response 63 – 12500 Hz (± 3 dB)
Signal-to-noise-ratio ≥ 50 dB

SPEAKERS

Bass reflex system
Dimensions (w x h x d)....150 x 153 x 204 (mm)

GENERAL INFORMATION

AC Power.....220 – 240V, 50 Hz,
Dimensions (w x h x d) .. 150 x 153 x 244 (mm)
Weight (with/without speakers)
..... approx. 4.9 / 2.3 kg

Subject to modification.

Maintenance

Cleaning the Cabinet

- Use a soft cloth slightly moistened with a mild detergent solution. Do not use a solution containing alcohol, spirits, ammonia or abrasives.

Cleaning Discs

- When a disc becomes dirty, clean it with a cleaning cloth. Wipe the disc from the centre out.
- Do not use solvents such as benzene, thinner, commercially available cleaners, or antistatic spray intended for analogue records.



Cleaning the disc lens

- After prolonged use, dirt or dust may accumulate at the disc lens. To ensure good playback quality, clean the disc lens with Philips CD Lens Cleaner or any commercially available cleaner. Follow the instructions supplied with cleaner.

AUSTRALIA - Philips Manufacturers Warranty for Australia only

These warranty conditions are valid for the following consumer electronics products: Colour Televisions, Projection TV, Plasma & LCD TV, Video Cassette Recorders, CD Recorders & Players, DVD Players, DVD Recorders, DVD Recorders with HDD, Audio Systems, Home Theatre systems, Digital Set Top Box & Portable Audio products.

The benefits given to the purchaser by this warranty are in addition to all other rights and remedies which the purchaser has in respect of the product under the Trade Practices Act or other Commonwealth or State Law.

Philips Consumer Electronics warrants its products to the purchaser as follows and subject to the stated conditions.

1 Year Free Repair Service - at Philips ASC

Colour Television, Plasma Television, LCD Television, Projection Television, DVDR/VCR Combo, DVD Recorders with Hard Drive, LCD Projectors, Wireless Audio Systems, Audio Systems, Home Theatre Systems & Digital Set-Top-Box.

1 Year Free Replacement – at your Retailer

Portable Audio, MP3 Infotainment products, Video Cassette recorders, DVD Player, DVD/VCR Combo Player, DVD Recorder without HDD & Portable DVD/ LCD players.

Conditions of Repair Warranty

1. All claims for warranty service should be made to your nearest Philips Authorised Service Centre or the Philips Technology Care Centre. Reasonable evidence of date of purchase must be provided.
2. This warranty extends only to defects in material or workmanship occurring under normal use of the product when operated in accordance with the instructions.
3. If a replacement product is supplied under the repair policy it is warranted for the remainder of the warranty of the original purchased product only.
4. Home service is provided only within the normal service area of one of our recommended Authorised Service Centres (ASC). It will be provided for television receivers only with a screen side of 67cms or above (product includes CRT, LCD TV, PTV, and Plasma TV). Televisions with screen side less than 67cms and all other products types are to be taken or sent by the consumer to the workshop of your nearest Authorised Service Centre, at the Consumer's expense.
5. This Manufacturers Warranty is limited to 3 months for the above listed Consumer Electronics products if used in commercial applications.
6. Philips may, at its discretion choose to replace rather than repair any product covered by this warranty.
7. Product accessories are covered by the same warranty period. Please contact the Philips Technology Care Centre for free replacement of faulty accessories.

8. This Manufacturers Warranty is neither transferable nor valid in countries other than Australia.

This warranty does not cover:

- a) Mileage or travel outside the normal service area covered by selected Authorised Service Centre.
- b) Service costs arising from failure to correctly adjust the controls of the product or to observe the instructions, or inspections that reveal that the product is in normal working order.
- c) Product failures caused by misuse, neglect, accidental breakage, transit damage, inexpert repairs or modification by un-authorised persons, external fires, lightning strikes, floods, vermin infestation or liquid spillage.
- d) Cleaning of video or audio heads.
- e) Inadequate receiving antennae.
- f) Replacement of worn or used batteries or other consumables.
- g) Consumer products used in commercial applications (This warranty is limited to 3 months only).
- h) Second hand products.

The conditions contained in this warranty card replace and override the provision of the Philips World-Wide Guarantee for products purchased in Australia and used in Australia.

Service is provided through more than 100 accredited Authorised Service Centres throughout Australia. For direct contact with the nearest recommended Authorised Service Centre in capital & regional cities/towns

Authorised Service Centre Network

1300 361 392

Customer support is provided in Australia by our trained call centre staff. For assistance with product features and specifications, please call

Technology Care Centre

1300 363 391

Please record the following information for your records and keep in a safe place. We recommend retaining your purchase receipt to assist with any warranty claim.

Model number:.....

Serial number:.....

Date of purchase:.....

Retailer:.....

Philips Consumer Electronics

a division of **Philips Electronics Australia Limited**
ABN 24 008 445 743,
Level 1, 65 Epping Road NORTH RYDE NSW 2113.

NEW ZEALAND - Guarantee and Service for New Zealand

Thank-you for purchasing this quality Philips product.

Philips New Zealand Ltd guarantees this product against defective components and faulty workmanship for a period of 12 months. Any defect in materials or workmanship occurring within 12 months from the date of purchase subject to the following conditions will be rectified free of charge by the retailer from whom this product was purchased.

Conditions

- 1.** The product must have been purchased in New Zealand. As proof of purchase, retain the original sales docket indicating the date of purchase.
- 2.** The guarantee applies only to faults caused by defective components, or faulty workmanship on the part of the manufacturer.
- 3.** The guarantee does not cover failures caused by misuse, neglect, normal wear and tear, accidental breakage, use on the incorrect voltage, use contrary to operating instructions, or unauthorised modification to the product or repair by an unauthorised technician.
- 4.** Reasonable evidence (in the form of a sales docket) must be supplied to indicate that the product was purchased no more than 12 months prior to the date of your claim.
- 5.** In the event of a failure, Philips shall be under no liability for any injury, or any loss or damage caused to property or products other than the product under guarantee.

This guarantee does not prejudice your rights under common law and statute, and is in addition to the normal responsibilities of the retailer and Philips.

How to claim

Should your Philips product fail within the guarantee period, please return it to the retailer from whom it was purchased. In most cases the retailer will be able to satisfactorily repair or replace the product.

However, should the retailer not be able to conclude the matter satisfactorily, or if you have other difficulties claiming under this guarantee, please contact

**The Guarantee Controller
Philips New Zealand Ltd.**

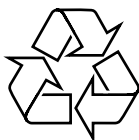
✉ **P.O. Box 41.021**

Auckland

☎ **(09) 84 94 160**

fax ☎ **(09) 84 97 858**

Meet Philips at the Internet
<http://www.philips.com>



MCM138D

