

English

How to mount your system onto wall

The wall mounting instructions are only for use by qualified wall mounting personnel.

Ask a qualified person to help you with the wall mounting, which includes drilling holes on the wall and mounting the set onto wall.

What else you'll need?

Drilling tools (e.g. an electrical drill).

Find a suitable location for mounting and complete the necessary rear connections.

The person for wall mounting should:

- learn about the piping, wiring and other relevant information inside your wall, to avoid unexpected damage;
- choose suitable drilling tools according to the drilling requirements;
- take other precautions necessary for the wall mounting work.

A Mounting your main unit onto wall **IMPORTANT!**

– Leave adequate space on both sides of the main unit to facilitate disc door opening!

- 1 Find an appropriate location on the wall and use the wall mounting bracket for the main unit as a template to drill four 6mm-diameter holes.
- 2 Secure four longer screws (supplied) in the holes .
- 3 Hook the main unit onto the bracket.

B Mounting your speakers onto wall

- 1 Detach the stand from any speaker. Place the detached screws aside for step 3.
- 2 Drill two 6mm-diameter holes at the chosen locations on the wall, with 46mm between them.
- 3 Secure the screws (obtained from step 1) in the holes respectively, leaving the screws 5mm proud of the wall.
- 4 Install the bracket on the speaker with the supplied shorter screws as shown.

- 5 Hook and mount the speaker in place.

Repeat the steps above to mount the other speaker.

C Install the DIN cable and cabling channel (optional) onto wall

- 1 Fix the bottom half of the DIN cable on the wall with screws as shown.
- 2 Guide the DIN cable between the main set and the subwoofer into the cabling channel.
- 3 Fit the upper half of the cabling channel on the bottom piece as shown.

中文(繁體)

如何將系統安裝在牆壁上

壁掛安裝指示僅供合格的壁掛安裝人員使用。

要求合格的人員協助您進行壁掛安裝，包括在牆上鑽孔以及將裝置架設在牆上。

您還需要什麼？

鑽孔工具 (例如電鑽)。

找到合適的架設位置並完成所需的後方連接工作 (請參與「安裝」)。

要進行壁掛安裝的人員應該要：

- 瞭解您牆壁內部的管線以及其他相關資訊，以避免造成未預期的傷害；
- 根據鑽孔需求選擇適當的鑽孔工具；
- 在進行壁掛安裝作業前，採取其他必要的預防措施。

A 將主機安裝在牆壁上

重要

– 在主機兩邊預留足夠的空間，以便CD前蓋板開啟！

- 1 在牆上合適的位置上使用主機壁掛安裝支架作為模板鑽出四個直徑 6 公釐的孔。
- 2 將隨附的尺寸稍長的螺絲分別牢固地鎖入孔中。
- 3 將主機掛在支架上。

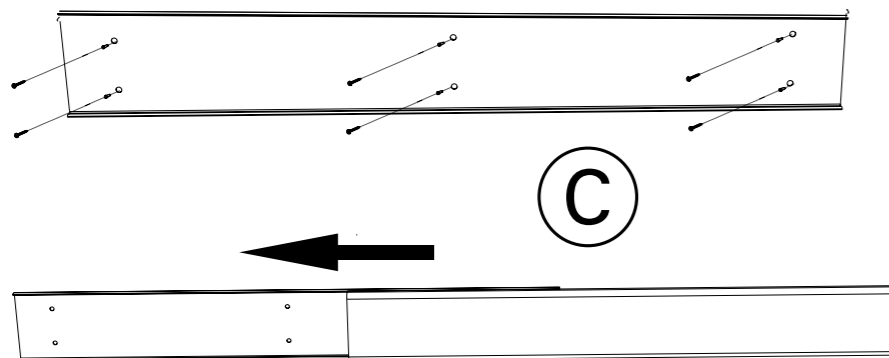
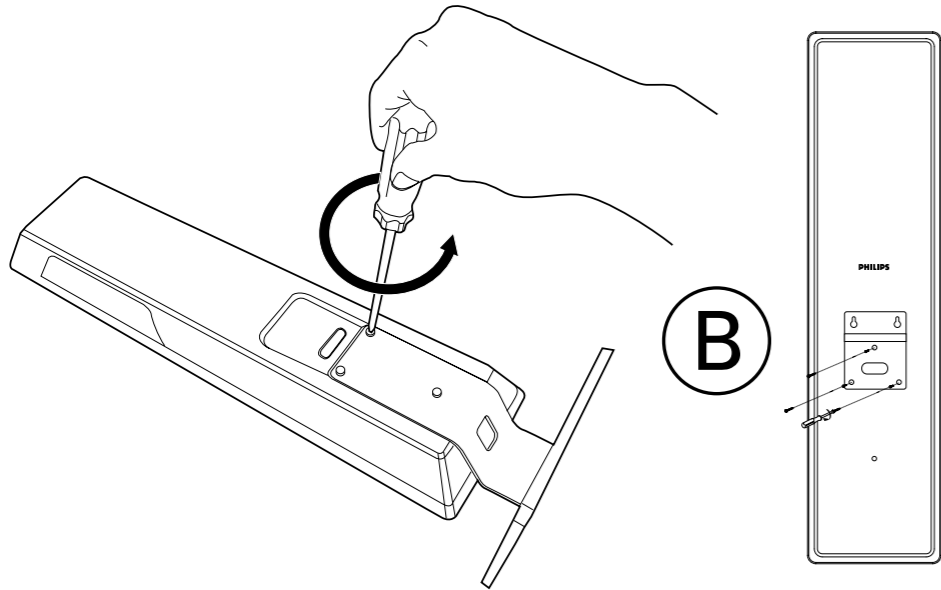
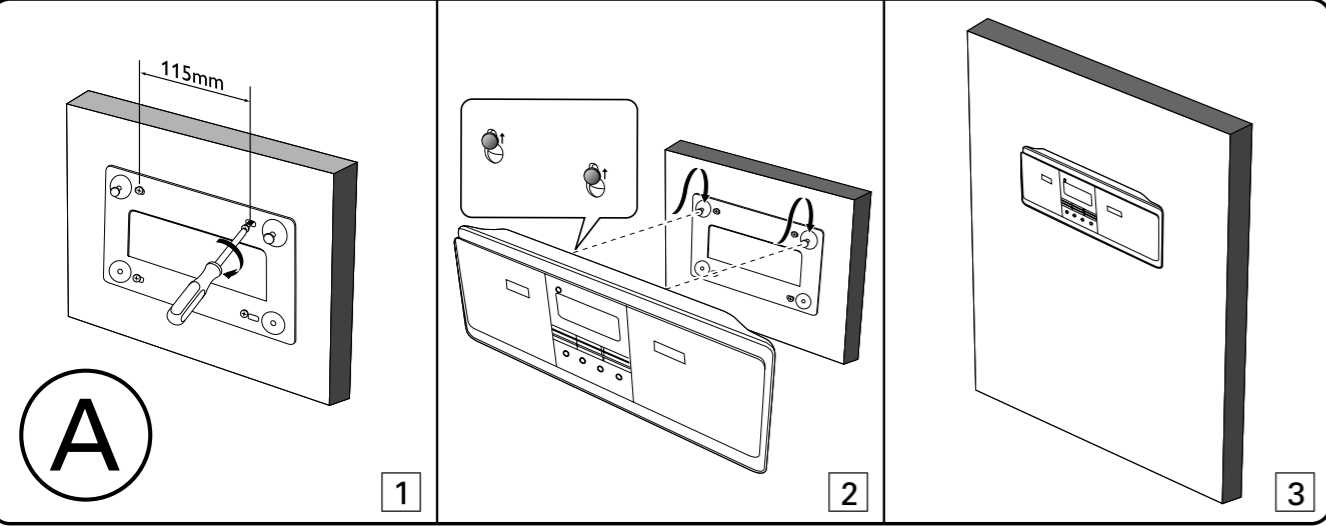
B 將喇叭安裝在牆壁上

- 1 從任一喇叭上卸下底座。將卸下的螺絲放在一旁以備第3步時使用。
- 2 將木釘與螺絲分別牢固地鎖入孔中，讓螺絲距離牆面 5 公釐遠。
- 3 將進行第3步時獲取的螺絲分別牢固地鎖入孔中，讓螺絲距離牆面 5 公釐遠。
- 4 利用隨附的尺寸稍短的螺絲安裝喇叭上的托架，如圖所示。

重複上述步驟以安裝其他喇叭。

C 在牆壁上安裝DIN纜線以及纜線通道 (選購)

- 1 利用螺絲將DIN纜線的下半部固定在牆上，如圖所示。
- 2 將DIN纜線從主機與重低音喇叭間穿過進入纜線通道。
- 3 將底座纜線通道的上半部如圖所示安裝。



© Royal Philips Electronics N.V. 2007
All rights reserved.

<http://www.philips.com>

