

Quick Start Guide



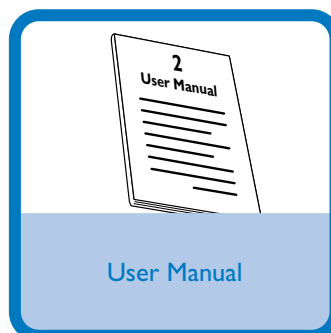
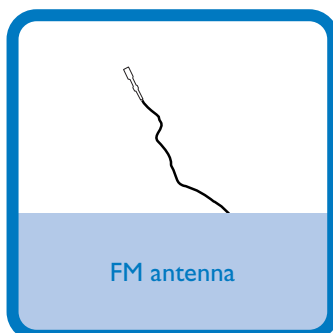
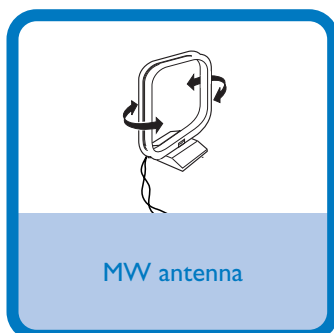
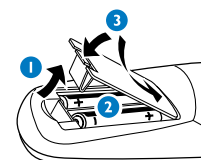
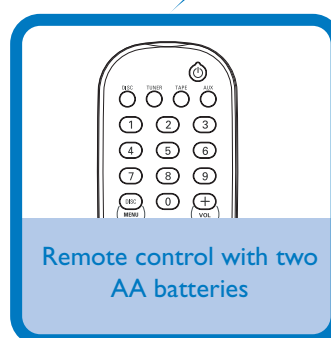
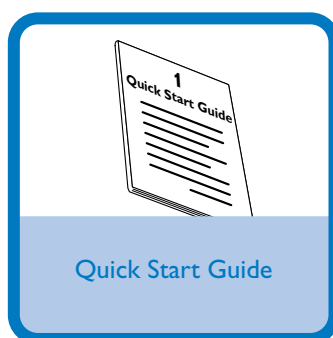
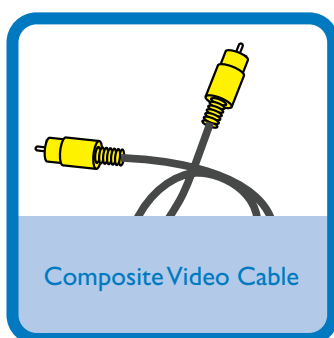
Step A *Connect*

Step B *Setup*

Step C *Enjoy*

What's in the Box?

You should find these items upon opening the box.

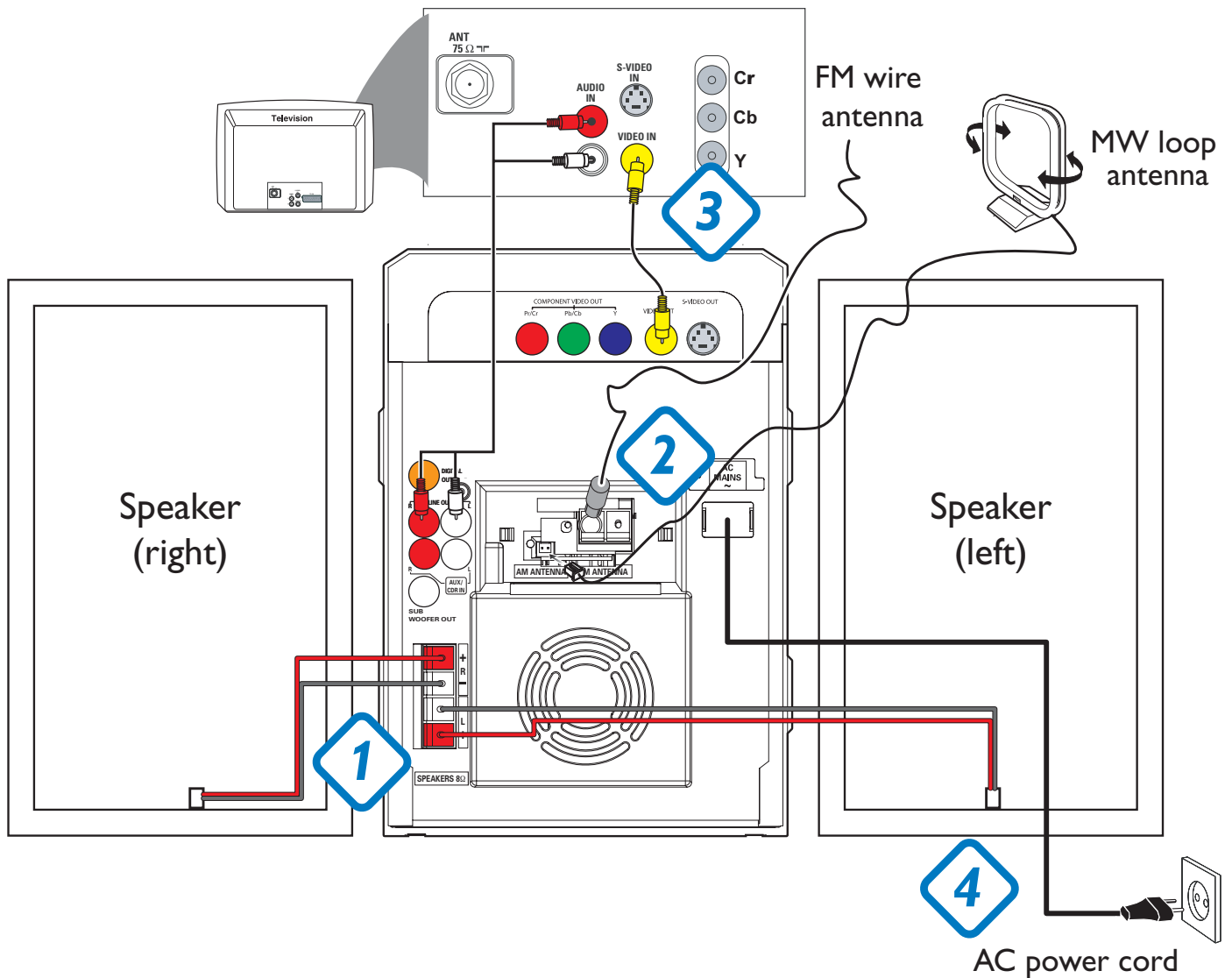


Step A *Connect*

Tip

See the User Manual for other TV connection options.

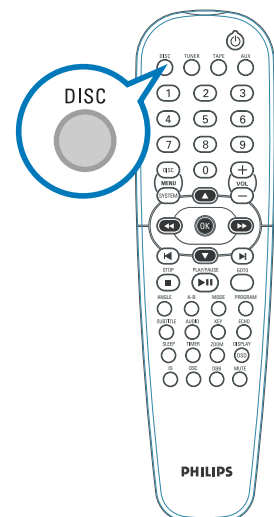
- 1 Connect the speaker cables.
- 2 Connect the MW and FM antennas.
- 3 Connect the composite video cable to a TV.
- 4 Connect the power cords of the system and TV.



Step B *Setup*

Setting up the TV

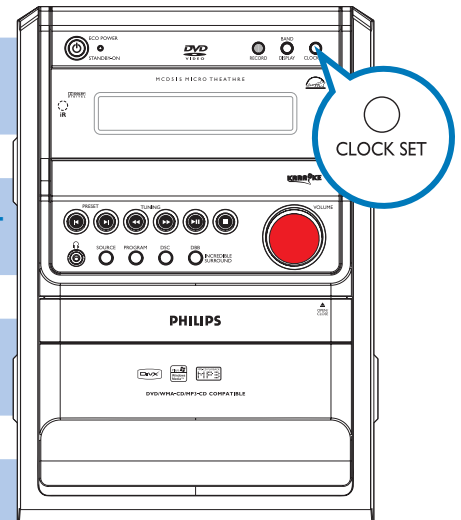
- 1 Press **SOURCE** (**DISC** on the remote) to select disc source.
- 2 Turn on the TV and set it to the correct Video In channel.



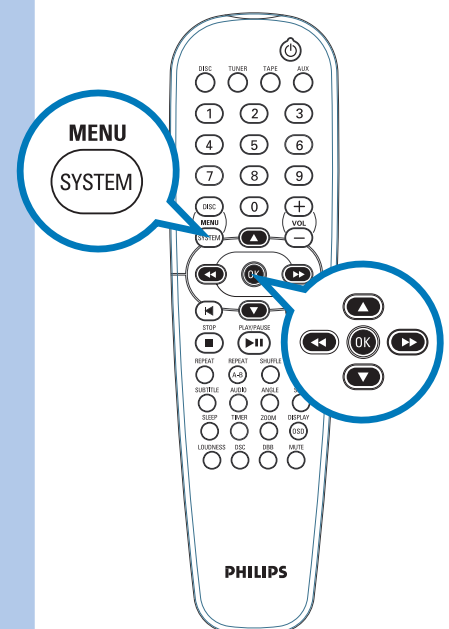
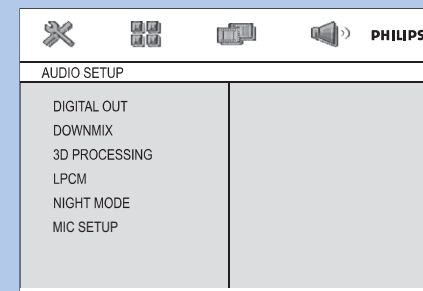
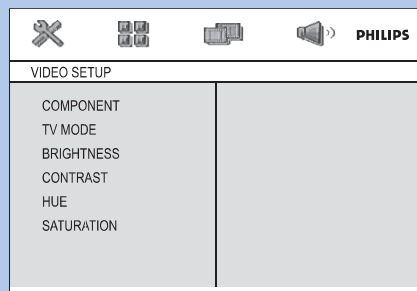
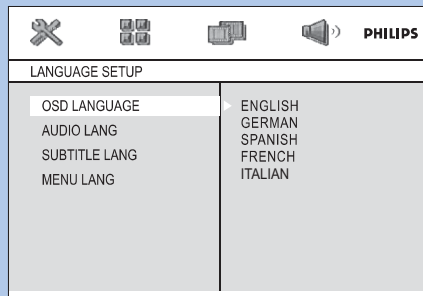
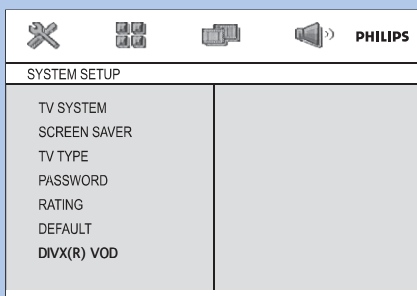
Step B Setup

Setting the clock

- 1 In standby mode, press and hold **CLOCK SET** on the system.
- 2 When the hour digits flash, turn the **VOLUME** control on the front panel or press **VOL+/-** on the remote to set the hours.
- 3 Press **CLOCK SET** again and the minute digits flash. Then turn the **VOLUME** control on the front panel or press **VOL+/-** on the remote to set the minutes.
- 4 Press **CLOCK SET** again to confirm the time setting.



Setting system menu options



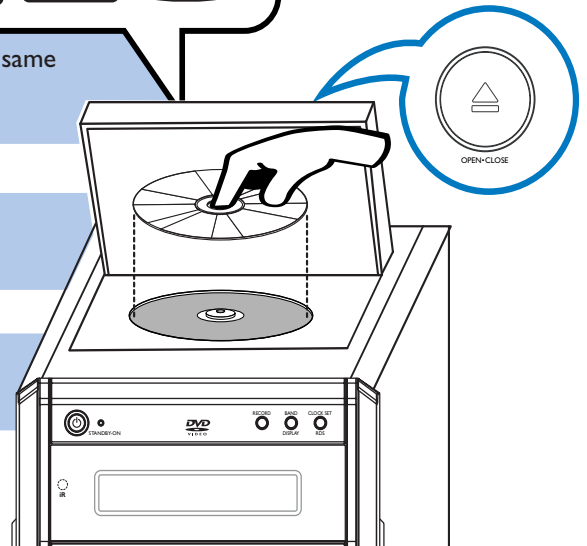
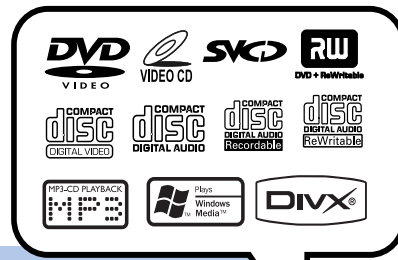
Tip

See chapters "Preparations" and "System Menu Options" in the User Manual for detailed descriptions.

Step C Enjoy

Playing a disc

- 1 Press **OPEN•CLOSE▲** to open the disc tray and load in a disc, then press the same button again to close the disc tray.
→ Make sure the label side of the disc is facing up.
- 2 Playback will start automatically. If not press **PLAY/PAUSE▶II**.
- 3 To stop playback, press **STOP■**.



Programming and tuning to radio stations

- 1 Press **SOURCE (TUNER)** on the remote to select tuner source.
- 2 Press **PROGRAM** for more than three seconds to program all available stations in order of waveband.
- 3 Press **PRESET◀/▶** until the desired preset station is displayed.

Tip

Detailed playback features and additional functions are described in the accompany owner's manual.

