

Quick Start Guide



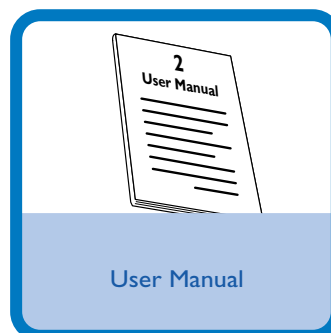
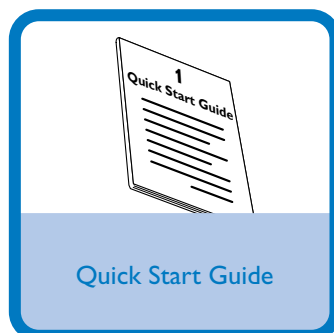
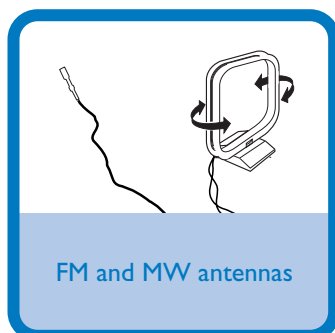
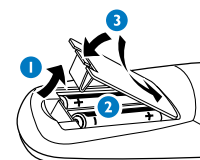
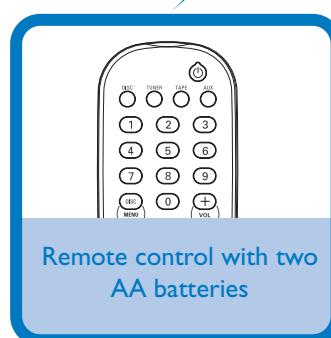
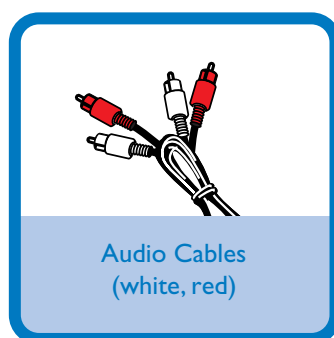
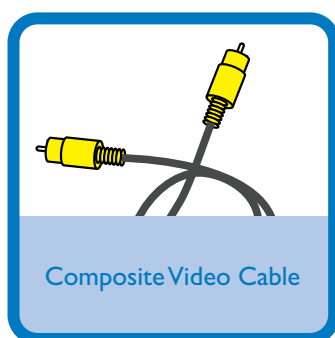
Step A *Connect*

Step B *Setup*

Step C *Enjoy*

What's in the Box?

You should find these items upon opening the box.



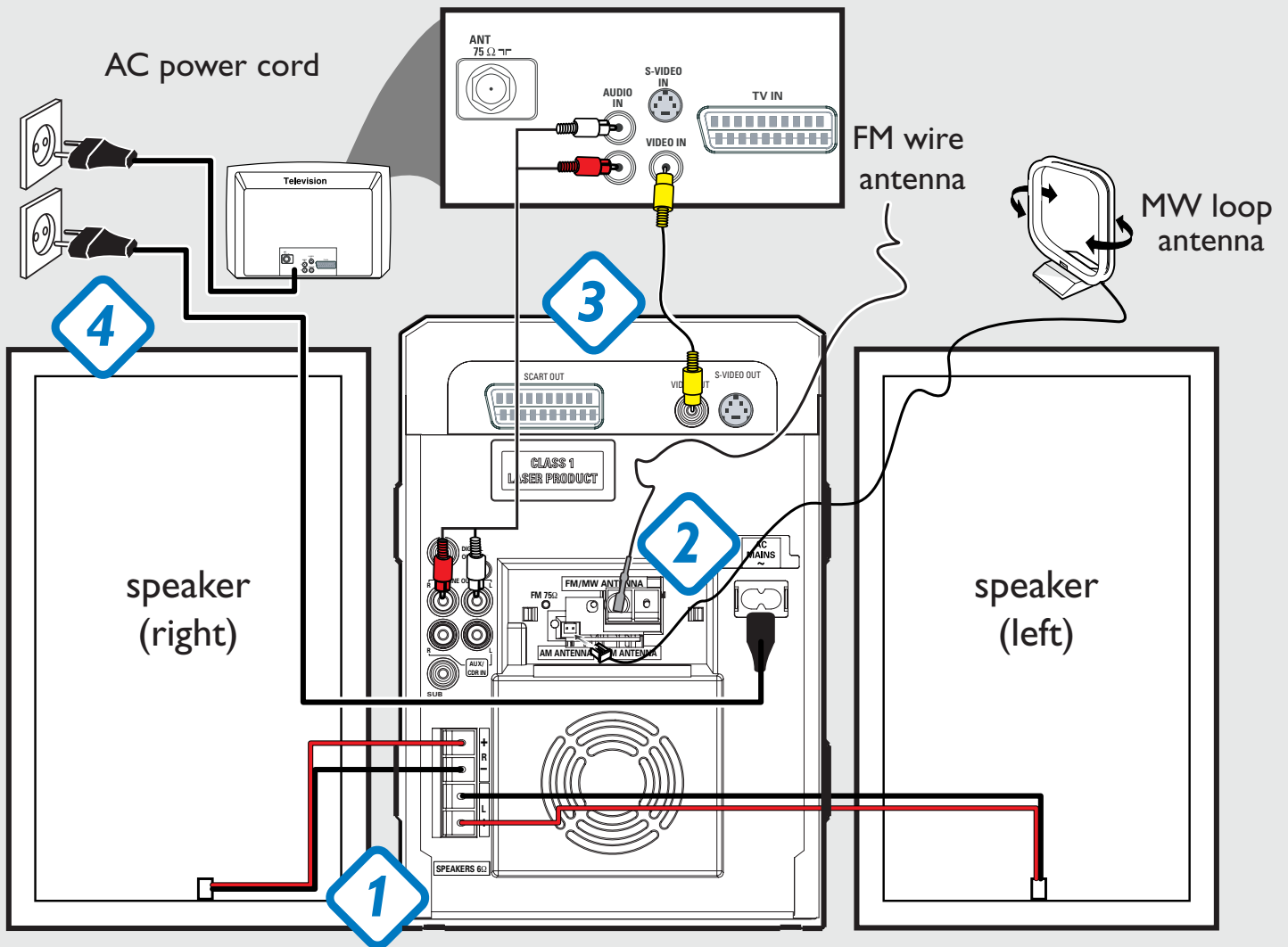
PHILIPS

Step A *Connect*

Tip

See the User Manual for other TV connection options.

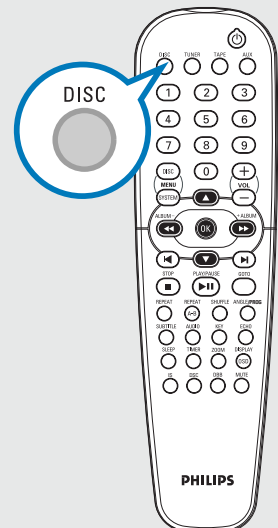
- 1 Connect the speaker cables.
- 2 Connect the MW and FM antennas.
- 3 Connect the composite video cable and audio cables to a TV.
- 4 Connect the power cords of the system and TV.



Step B *Setup*

Setting up the TV

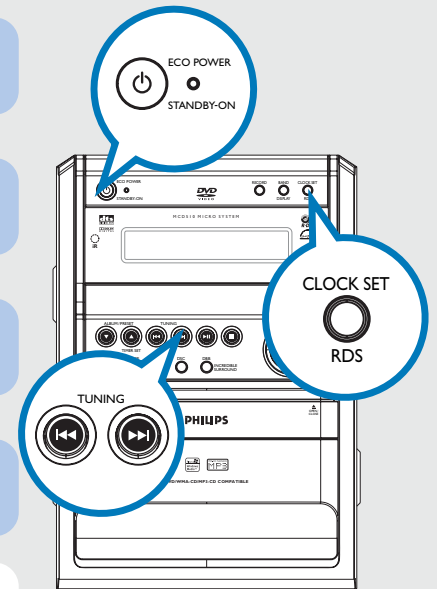
- 1 Press **SOURCE** (**DISC** on the remote) to select disc source.
- 2 Turn on the TV and set it to the correct Video In channel.




Step B Setup

Setting the clock

- 1 In normal standby mode, press and hold **CLOCK SET/RDS** on the system.
- 2 When the hour digits flash, press **TUNING** |◀▶| on the system to set the hours.
- 3 Press **CLOCK SET/RDS** again and the minute digits flash. Then press **TUNING** |◀▶| to set the minutes.
- 4 Press **CLOCK SET/RDS** again to confirm the time setting.



Tip


If the system is in Eco power standby mode, press and hold **ECO POWER/STANDBY-ON**  for more than 3 seconds to switch to normal standby.

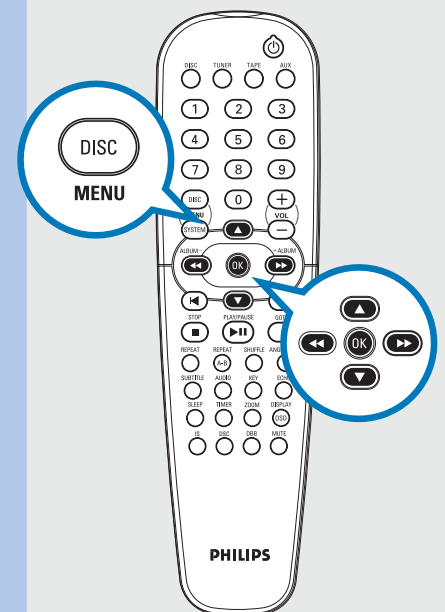
Setting DVD menu options

Language	Video	Audio	Rating
OSD Menu	English		
Subtitle	English		
Audio	English		
Menu	English		

Language	Video	Audio	Rating
TV Shape	4:3 LB		4:3 PS
TV System	Auto		4:3 LB
Video output	S-VIDEO		16:9

Language	Video	Audio	Rating
Digital Out	PCM		
PCM 48KHz	Off		Off
Priority	CD		On
Night Mode	Off		

Language	Video	Audio	Rating
Password		----	1.kid Safe
Rating	8. Adult		2.G
Load Factory	Reset		3.PG
			4.PG-13
			5.PG-R
			6.R
			7.NC-17
			8.Adult

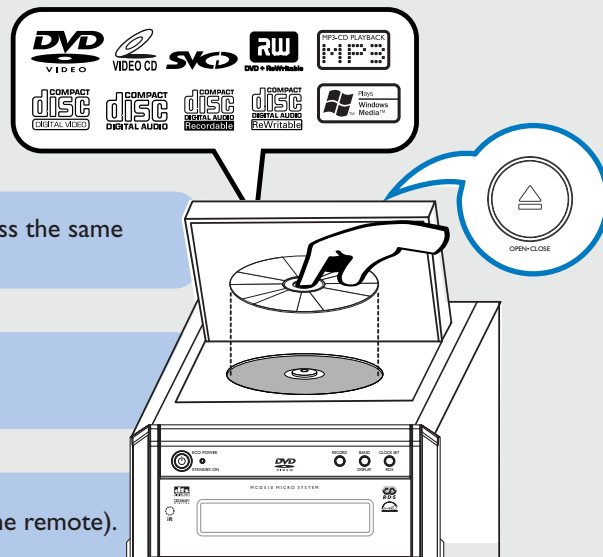


Tip

See chapters "Preparations" and "DVD Menu Options" in the User Manual for detailed descriptions.

Playing a disc

- 1 Press **OPEN •CLOSE ▲** to open the disc door and load in a disc, then press the same button again to close the disc door.
- 2 Load in a disc with the label side facing up.
- 3 Playback will start automatically. If not press **▶ II** (**PLAY/PAUSE ▶ II** on the remote).
- 4 To stop playback, press **■** (**STOP ■** on the remote).



Programming and tuning to radio stations

- 1 Press **SOURCE (TUNER)** on the remote to select tuner source.
- 2 Press **PROGRAM (ANGLE/PROG)** on the remote for more than two seconds to program all available stations in order of waveband.
- 3 Press **ALBUM/PRESET ▲/▼** until the desired preset station is displayed.

Tip

Detailed playback features and additional functions are described in the accompany owner's manual.

