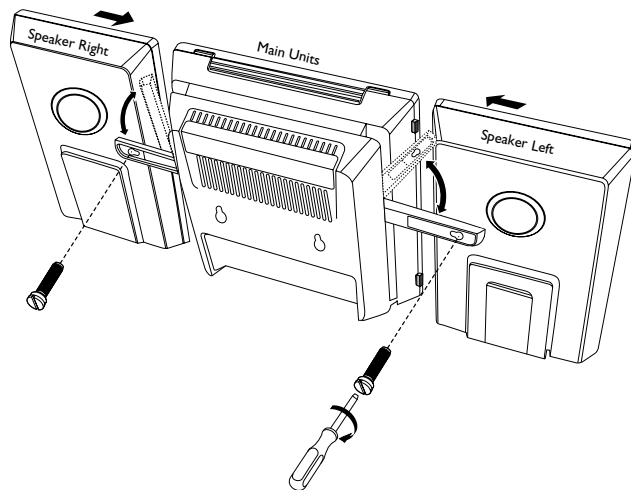


## Wall mounting instructions

### 壁掛安裝指南

**Drill holes on wall at hole positions marked  
(no accessories provided with this template)  
請根據標記位置在牆上鑽孔（此模板無附件隨同提供）**



### Use screws to mount the main unit on the wall

- Use this sheet as a template. Mark the position where you want to hang the unit on the wall (as shown) and then drill two 6mm diameter holes.
- Secure the dowels and screws in the holes respectively, leaving the screws 5mm proud of the wall.
- Hang the unit on the fastening screws.

### 使用螺絲把主機固定在牆上。

- 使用此紙片作為模板，在牆上您想要懸掛主機的位置（如圖所示）標記好鑽孔位置，然後鑽兩個直徑為6毫米的孔。
- 分別將入牆銷釘和螺絲固定在孔內，螺絲須露出牆外5毫米。
- 將整機懸掛在緊固的螺絲上。

## How to mount your system onto wall

### IMPORTANT!

- The wall mounting instructions are for use by the qualified wall mounting person only!
- Ask a qualified person to help you with the wall mounting, which includes drilling holes on the wall and mounting the set onto wall.

### What else you'll need

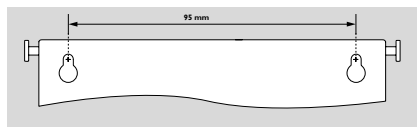
- Drilling tools (e.g. an electric drill)
- 2 x screws

### Preparation

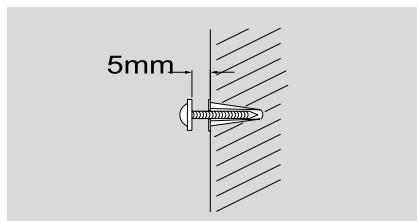
- 1 Find a suitable location for mounting and complete necessary rear connections (see **Installation** in the user manual).
- 2 Ask a qualified person to help you with the wall mounting, who should:
  - to avoid unexpected damage, learn about the piping, wiring and other relevant information inside your wall;
  - according to the drilling requirements, choose suitable drilling tools;
  - take other precautions necessary for the wall mounting work.

## Mounting your system

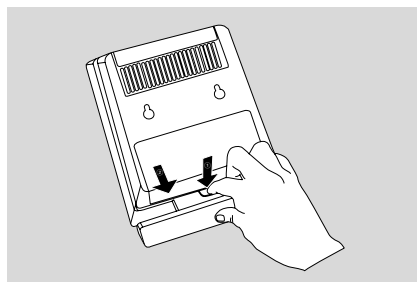
- 1 Align the template in the chosen location on a wall. Use a pencil to mark the drilling positions (as shown).



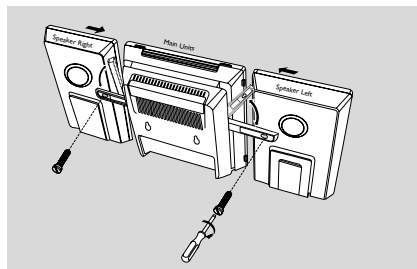
- 2 Drill two 6mm diameter holes as marked.
- 3 Secure the dowels and screws in the holes respectively, leaving the screws 5mm proud of the wall.



- 4 To detach the stand,
  - a. As shown, hold down **PRESS▼**.
  - b. Move out the stand to detach.



- 5 As shown, hook and mount the speakers in place.



- 6 Hang the unit on the fastening screws.

## 如何將設備安裝在牆壁上

### IMPORTANT!

- 壁掛安裝指示僅供合格的壁掛安裝人員使用！
- 壁掛安裝指示僅供合格的壁掛安裝人員使用！
- 要求合格的人員協助您進行壁掛安裝，包括在牆上鑽孔以及將裝置架設在牆上。

### 您還需要什麼？

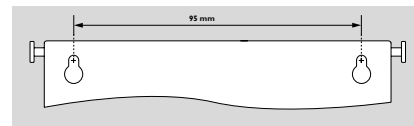
- 鑽孔工具（例如電鑽）。
- 兩隻螺絲

### 準備

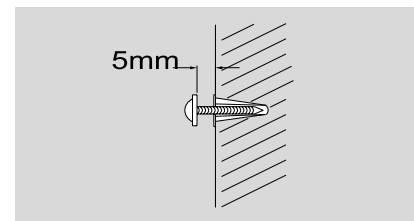
- 1 找到合適的架設位置並完成所需的背部連接工作（請參與用戶手冊中「安裝」一節）。
- 2 要進行壁掛安裝的人員應該要：
  - 瞭解您牆壁內部的管線以及其他相關資訊，以避免造成未預期的傷害；
  - 根據鑽孔需求選擇適當的鑽孔工具；
  - 在進行壁掛安裝作業前，採取其他必要的預防措施。

## 安裝你的設備

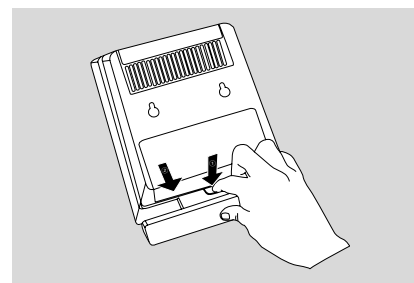
- 1 將模板對準在牆上預先選擇好的位置，並使用鉛筆在鑽孔位置做標記（如圖所示）。



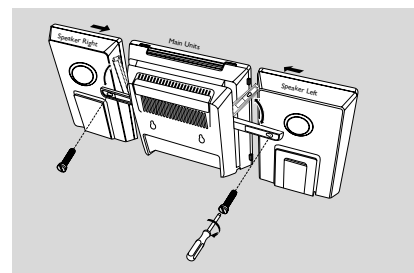
- 2 按所做的標記鑽兩個直徑6毫米的小孔。
- 3 分別將入牆銷釘和螺絲固定在孔內，螺絲須露出牆外5毫米。



- 4 如要卸下底座：
  - a. 如圖所示，按住 **PRESS▼** 鍵。
  - b. 從機上拉出底座。



- 5 如圖所示，掛上兩個揚聲器並把它們固定在位。



- 6 將整機懸掛在緊固的螺絲上。