

MCD2160 MCU upgrade steps

The MCU of MCD2160 can be upgraded by USB slot as follows:

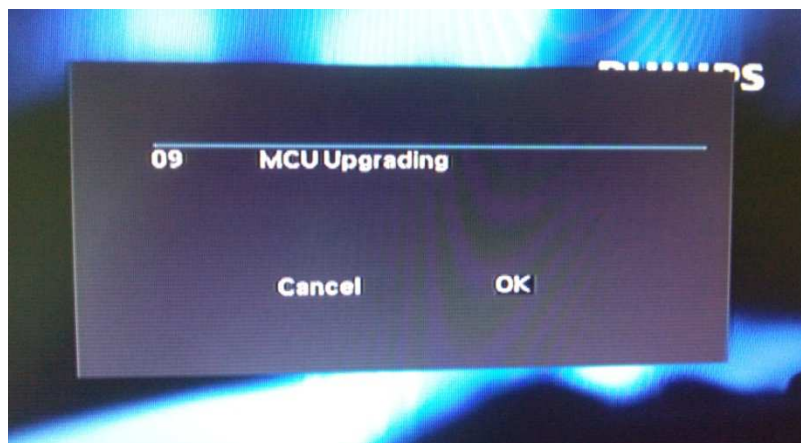
1. Power on the unit connected to TV. The display on TV like this:



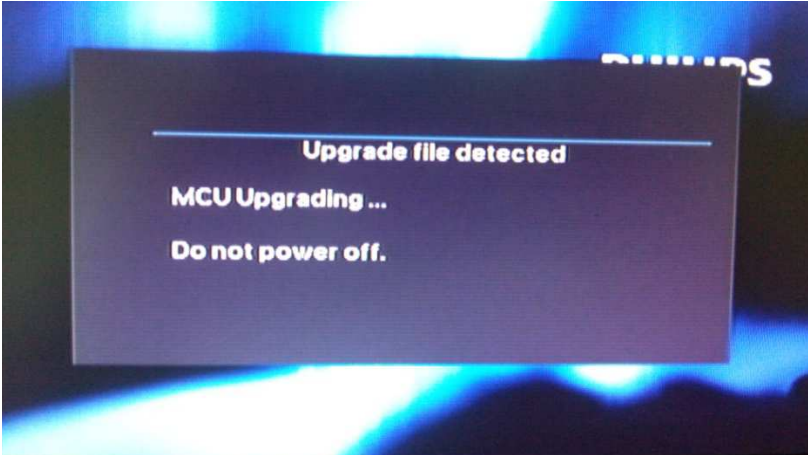
2. Unzip the Software file to '2160_MCU.hex' and put it in the root of USB storage device via computer. Plug it in the USB plug of the device press source key on RC to switch to USB source.



3. A confirm message will be pop up, press OK on RC.



4.The software is upgrading.The unit will switch to standby with VFD display “--:--” automatically about 1 minutes later,upgrade process complete.remove the USB and power on the unit.



5.To check the software version,navigate [setup]->[preferences]->[version info] press OK on RC.The upgrade is successful if the software version is correct.

