

Contents

General Information

Environmental information	5
Supplied accessories	5
Safety information	5

Preparation

Rear connections	6–7
Before using the remote control	7
Replacing battery (lithium CR2032) into the remote control	7

Controls

Controls on the system and remote control	8
--	---

Basic Functions

Switching the system on	9
Power-saving automatic standby	9
Adjusting volume and sound	9

CD Operation

Playing a disc	10
Selecting a different track	10
Finding a passage within a track	10
Different play modes: Shuffle and Repeat	11
Programming track numbers	11
Erasing the programme	11

Radio Reception

Tuning to radio stations	12
--------------------------------	----

Maintenance	12
-------------------	----

Clock/Timer

Setting the clock	13
Setting the timer	13
Activating and deactivating TIMER	13
Activating and deactivating SLEEP	14

Specifications	14
----------------------	----

Troubleshooting	15
-----------------------	----

This product complies with the radio interference requirements of the European Community.

Supplied accessories

- 2 speaker boxes
- remote control with battery
- AM loop antenna

Environmental Information

All unnecessary packaging has been omitted. We have tried to make the packaging easy to separate into three materials: cardboard (box), polystyrene foam (buffer) and polyethylene (bags, protective foam sheet).

Your system consists of materials which can be recycled and reused if disassembled by a specialized company. Please observe the local regulations regarding the disposal of packaging materials, exhausted batteries and old equipment.

Disposal of your old product

Your product is designed and manufactured with high quality materials and components, which can be recycled and reused.



When this crossed-out wheeled bin symbol is attached to a product it means the product is covered by the European Directive 2002/96/EC

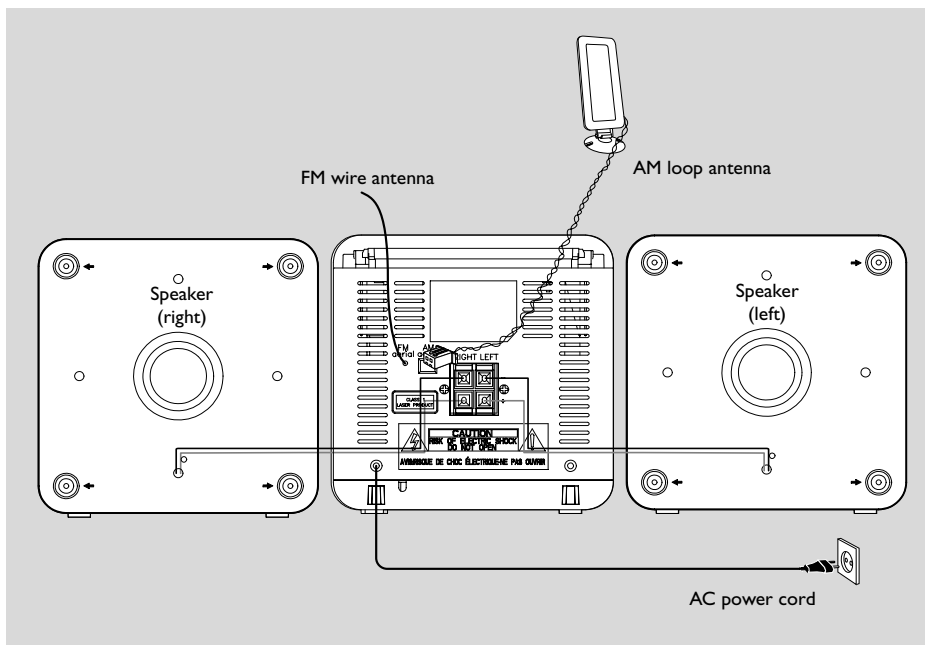
Please inform yourself about the local separate collection system for electrical and electronic products.

Please act according to your local rules and do not dispose of your old products with your normal household waste. The correct disposal of your old product will help prevent potential negative consequences for the environment and human health.

Safety Information

- Before operating the system, check that the operating voltage indicated on the typeplate (or the voltage indication beside the voltage selector) of your system is identical with the voltage of your local power supply. If not, please consult your dealer.
- Place the system on a flat, hard and stable surface.
- Place the system in a location with adequate ventilation to prevent internal heat build-up in your system. Allow at least 10 cm (4 inches) clearance from the rear and the top of the unit and 5 cm (2 inches) from each side.
- The ventilation should not be impeded by covering the ventilation openings with items, such as newspapers, table-cloths, curtains, etc.
- Do not expose the system, batteries or discs to excessive moisture, rain, sand or heat sources caused by heating equipment or direct sunlight.
- No naked flame sources, such as lighted candles, should be placed on the apparatus.
- No objects filled with liquids, such as vases, shall be placed on the apparatus.
- If the system is brought directly from a cold to a warm location, or is placed in a very damp room, moisture may condense on the lens of the disc unit inside the system. Should this occur, the CD player would not operate normally. Leave the power on for about one hour with no disc in the system until normal playback is possible.
- The mechanical parts of the set contain self-lubricating bearings and must not be oiled or lubricated.
- **When the system is switched to Standby mode, it is still consuming some power. To disconnect the system from the power supply completely, remove the AC power plug from the wall socket.**

Preparations



Rear connections

The type plate is located at the rear of the system.

For users in the U.K.: please follow the instructions on page 2.

A Power

– Before connecting the AC power cord to the wall outlet, ensure that all other connections have been made.

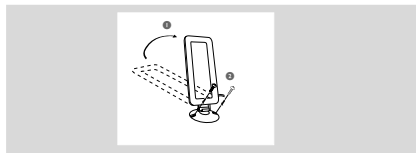
WARNING!

- For optimal performance, use only the original power cable.
- Never make or change any connections with the power switched on.

B Antennas Connection

AM (MW) antenna

1. Unfold the loop antenna and if necessary, use screws (not supplied) to fix it to a flat, hard and stable place:



2. Fit the plug of the loop antenna to AM ANTENNA as shown above.
 3. Adjust the antenna for optimal reception
- Position the antenna as far as possible from a TV, VCR or other radiation source.

