

Philips SpeechExec
transcription set

SpeechExec

LFH7177



Optimize your workflow

with digital transcription

The Philips transcription set is a digital document creation solution specifically designed to make transcription easy and intuitive. The ergonomic accessories and the innovative SpeechExec workflow software let you manage your jobs easily.

Enhance your productivity

- SpeechExec workflow software for easy data management
- Seamless integration into Philips dictation solutions
- Priority setting for getting urgent jobs processed first
- Access to recordings via network for quick transcription

Designed around you

- Ergonomic foot pedal for convenient playback control
- Lightweight stereo headphones for enhanced wearing comfort

PHILIPS

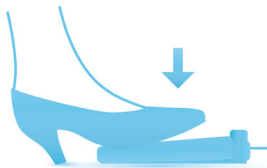
Highlights

Direct access to recordings



SpeechExec allows direct access to recordings via network for quick transcription.

Ergonomic foot pedal



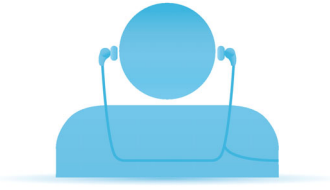
Slim, ergonomic design guarantees hands-free control of all playback functions with minimal physical strain.

Priority setting



With the included priority setting option, urgent recordings get processed first.

Professional headphones



Lightweight under-the-chin-style stereo headphones designed to deliver excellent sound quality, with soft ear cushions for enhanced wearing comfort.

Seamless integration

The Transcription Set can be seamlessly integrated with existing Philips digital dictation solutions.

SpeechExec workflow software



SpeechExec sends your recordings to your assistant for transcription and allows you to monitor the status of your work.

Specifications

What is included?

- Stereo headphones LFH0334
- SpeechExec Transcribe software
- USB foot pedal 2330

Convenience

- Configurable foot pedal
- Lightweight headphone design
- Clear job overview
- Versatile audio player
- Playback speed control
- Automatic file routing

Foot pedal

- Connectivity: USB plug
- Product dimensions (W × H × D): 16 × 15 × 1.8 cm/6.3 × 5.9 × 0.7 in.
- Weight: 0.61 kg/1.3 lb.

Headphones

- Style: under chin
- Cable connection: one-sided
- Cable length: 3.0 m/10 ft.
- Connector: 3.5 mm, stereo, right angled
- Acoustic system: open
- Magnet type: neodymium
- Diaphragm: PET dome
- Voice coil: copper
- Impedance: 2 × 32 Ohm
- Maximum power input: 2 × 10 mW
- Sensitivity: 103 dB
- Speaker diameter: 14 mm/0.6 in.
- Sound quality: optimized for voice playback
- Connector finish: gold-plated
- Product dimensions (W × H × D): 16 × 15 × 1.8 cm/6.3 × 5.9 × 0.7 in.
- Weight: 0.053 kg/0.12 lb.

System requirements

- Processor: Pentium IV 1GHz recommended
- RAM memory: 1 GB (2 GB recommended)
- Hard disk space: 100 MB for SpeechExec, 850 MB for Microsoft .NET 4
- Headphone output or speakers
- Operating system: Windows 7 (32/64-bit), Windows Vista (32/64-bit), Windows XP (32 bit)
- Free USB port
- DVD-ROM drive
- Graphics card: DirectX-compliant graphics card with hardware acceleration recommended
- Sound device: Windows-compatible sound device

Green specifications

- Compliant to 2002/95/EC (RoHS)
- Lead-free soldered product

Accessories

- SpeechExec Transcribe software
- Quick start guide



Issue date 2014-02-13

Version: 1.1.4

12 NC: 8735 717 70311
UPC: 6 05342 04612 1

© 2014 Koninklijke Philips N.V.
All Rights reserved.

Specifications are subject to change without notice.
Trademarks are the property of Koninklijke Philips N.V.
or their respective owners.

www.philips.com