




Blue Button

The Fastest Way to Results

“Blue Button”: what is it?

Recent Philips Optical Recording drive types are equipped with an additional feature, accessible via pushing a button, also referred to as “Blue Button”.

On external CD-RW drives, you can recognize the button via the  logo, often printed next to the button. Please note that the button might not always have a blue color.

Please consult the “instructions for use” for the location of the “Blue Button” on your product.


What do I need to use the “Blue Button”?

Simple. All that is required is a CD-ReWriter equipped with a “Blue Button”, and which is connected to your PC. The PC must be powered on and have a possibility to connect to the Internet, and the CD ReWriter must be switched on (if applicable).

The CD-ReWriter must be installed via the “install CD” delivered with the drive, and the “Blue Button” resident application software must be installed.

What can I do with the “Blue Button”?

With the “Blue Button” you have the ability to get instant access to the Philips PC Peripherals website and get direct the latest product information and downloads with a single click with the mouse. The purpose is to avoid long time searching the Internet for the right information on e.g. Philips products or latest drive firmware.

Pressing the “Blue Button” on your drive (or double click the  logo in the system tray at the right bottom corner), will pop up a window on the screen (referred to as Blue Button Window), in which several quick functions are available, accessible via a simple click with the mouse. See fig. 1

- ?? The first button brings you right to the Internet page of Philips PC Peripherals, where you can find more information on all PC Peripherals products (like CD-ReWriters, DVD-ReWriters, PC Camera’s, Philips Sound Cards, etc). See fig. 2.
- ?? The second button brings you right to the Internet page of Philips Customer Care, where you can find all information on technology, white papers, manuals, product leaflets, firmware upgrades, and drivers. See fig. 3
- ?? The third button can be used to start a software application. This can be a CD creation application, like Easy CD Creator from Roxio, or an email program like Microsoft Outlook. This can be completely configured by the user, using the ‘options’ function available at the pull down menu at top left of the Blue Button window. For more details see the “More info” file, installed on your PC, and accessible via “startup/programs/philips external station/more info”, chapter “Blue Button”.

Keeping the “Blue Button” pressed for 2 seconds or more opens your Internet browser program and points you directly to a drive support website for downloading the latest firmware for your drive automatically. Please follow the instructions given on that website.

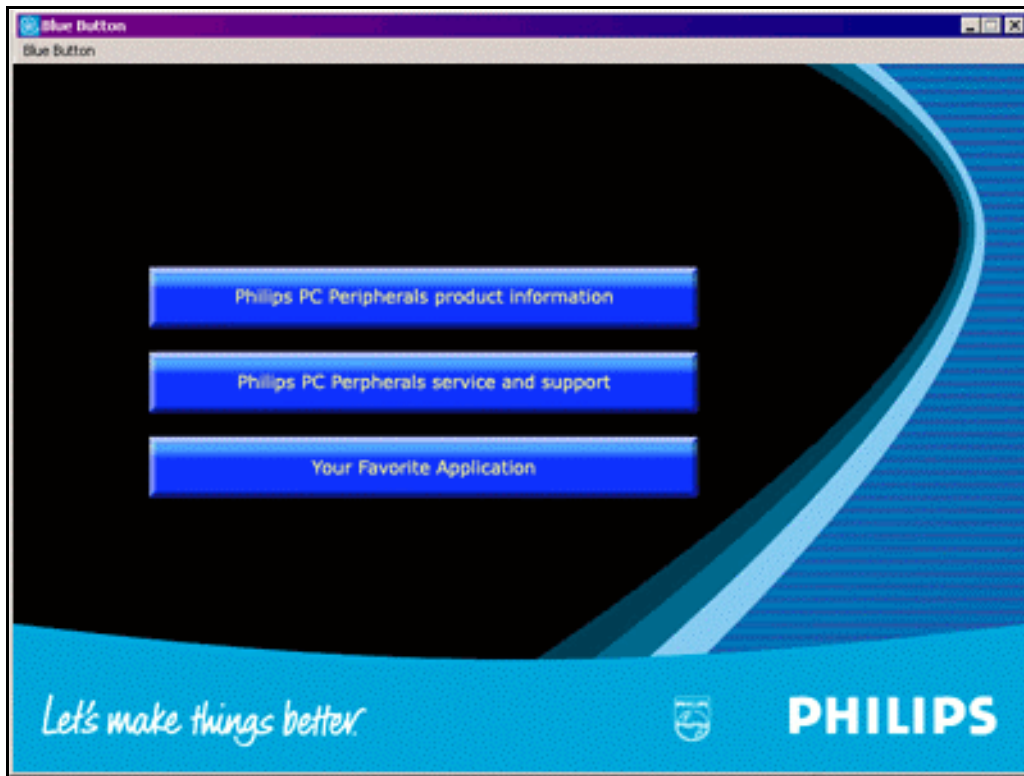


Figure 1 - Blue Button Window



Figure 2 - Philips PC Stuff Website



Figure 3 - Philips Customer Care site

Where can I find more information?

More information on the "Blue Button" can be found on the Philips PC Peripherals website:

<http://www.philips.com/pcstuff>

Also more information on the "Blue Button" can be found in the "more info" file installed on your PC when installing a drive equipped with the "Blue Button". See installation guide of the CD-ReWriter for more information.

What is the first product with a "Blue Button"?

The first CD-ReWriter equipped with a "Blue Button" is the new external 24x CD-ReWriter of Philips: also referred to as Jack Rabbit 2. The drive is a 24x12x40 external drive, and has a USB2.0 (full speed) interface.

See fig. 4.

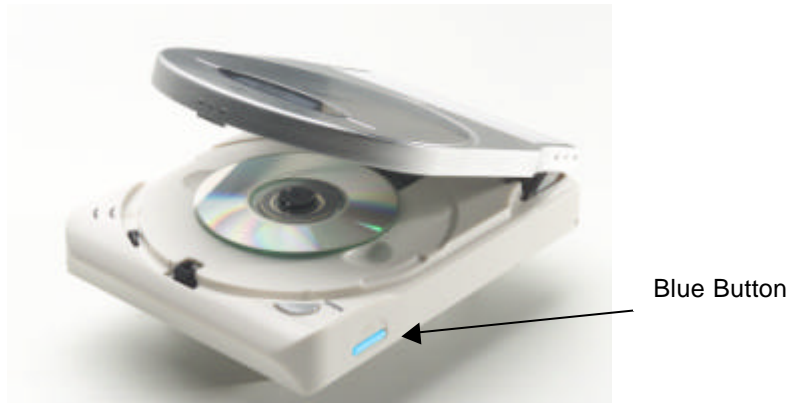


Figure 4 - Jack Rabbit 24x12x40, USB2.0

How to download and upgrade your “Blue Button” application software?

When a new version of the “Blue Button” application software needs to be installed follow the steps below:

- ?? Press the “Blue Button” such the Blue Button Window will appear.
- ?? Click in the window on the “Philips PC Peripherals Service and Support” button.
- ?? The “Philips Customer Care” window opens and please enter the product model number of your CD-ReWriter (e.g JR24CDRWK/00, JR24CDRWK/05 or JR24CDRWK/17). Click on “Search”.
- ?? A window opens “Documents found for product”. Then select and download the document “Blue Button” readme file and the “Blue Button” application program.
- ?? Once both files have been downloaded extract the Zipped “Blue Button” file and install the “(logo) Blue Button” program.
- ?? After installation of the “Blue Button” program, reboot the system and the “Blue Button” application is ready for use.

Note: it is advised to uninstall a previous version of the “Blue Button” program, prior to the installation of a newer version.

This information can also be found in the help files installed on your PC, when installing a drive equipped with the “Blue Button”.
