

Register your product and get support at  
[www.philips.com/welcome](http://www.philips.com/welcome)

HX9383, HX9343, HX9333

## Sonicare DiamondClean

# Quick start guide

Kurzanleitung

Guide de mise en route

Guida di avvio rapido

Snelstartgids



Please read chapter 'Important' in the user manual before you use the appliance.

Lesen Sie bitte in der Bedienungsanleitung das Kapitel "Wichtig", bevor Sie das Gerät verwenden.

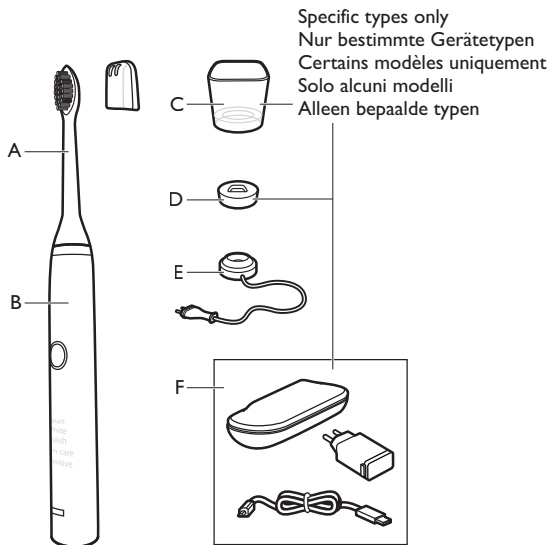
Veuillez lire le chapitre « Important » du mode d'emploi avant d'utiliser l'appareil.

Leggete il capitolo 'Importante' nel manuale per l'utente prima di iniziare a utilizzare l'apparecchio.

Lees hoofdstuk 'Belangrijk' in de gebruiksaanwijzing voordat u het apparaat gebruikt.

# PHILIPS

# CONTENT / INHALT / SOMMAIRE / SOMMARIO / INHOUD



**A**  
Brush head  
Bürstenkopf  
Tête de brosse  
Testina  
Opzetborstel

**B**  
Handle  
Handstück  
Manche  
Impugnatura  
Handvat

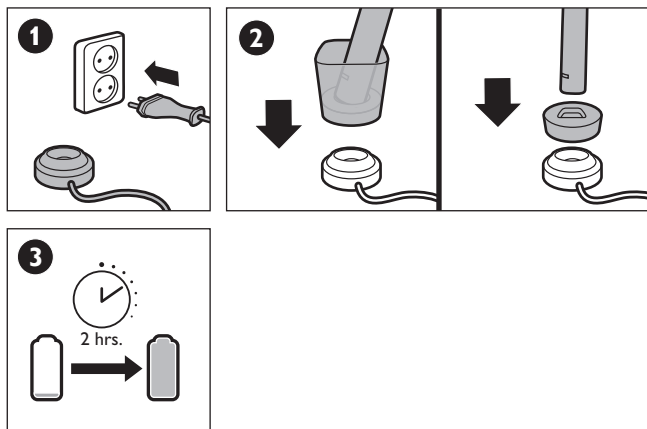
**C**  
Charger glass  
Glas des Ladegeräts  
Verre de charge  
Bicchieri per ricarica  
Opladglas

**D**  
Charging stand  
Ladegerät  
Base de recharge  
Supporto di ricarica  
Opladstandaard

**E**  
Charging base  
Ladestation  
Station de recharge  
Base di ricarica  
Opladstation

**F**  
Charging travel case  
Box für Reiseladegerät  
Coffret - chargeur de voyage  
Custodia da viaggio  
Opladreisetui

**BEFORE FIRST USE / VOR DEM ERSTEN GEBRAUCH /  
AVANT LA PREMIÈRE UTILISATION / PRIMO UTILIZZO /  
VOOR HET EERSTE GEBRUIK**



Refer to your user manual for additional instructions.

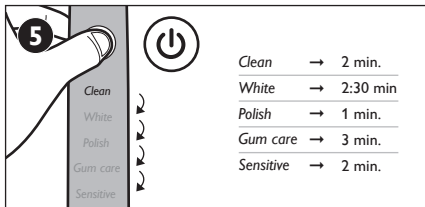
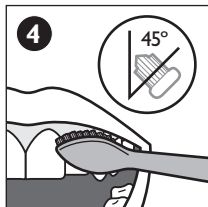
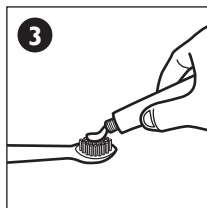
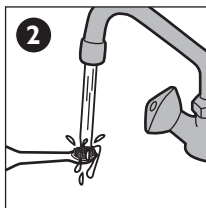
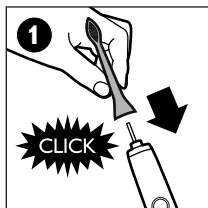
Nur bestimmte Gerätetypen Vor dem ersten Gebrauch Weitere Informationen finden Sie in der Bedienungsanleitung.

Reportez-vous au mode d'emploi pour de plus amples instructions.

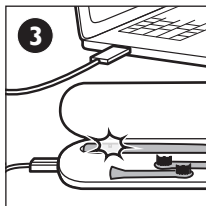
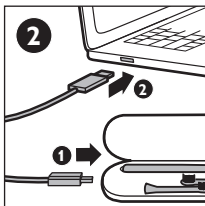
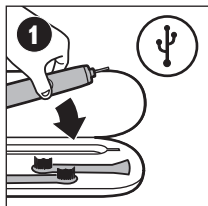
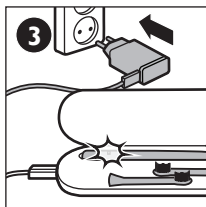
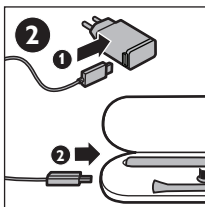
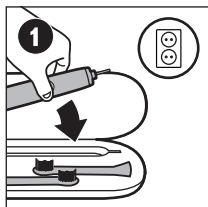
Per ulteriori informazioni, consultate il manuale dell'utente.

Raadpleeg uw gebruiksaanwijzing voor extra instructies.

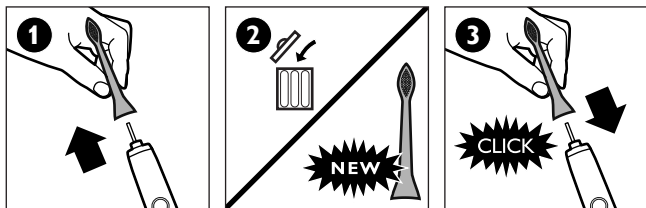
**USING / DAS GERÄT VERWENDEN / UTILISATION /  
UTILIZZO / GEBRUIK**



**TRAVELING WITH YOUR SONICARE / REISEN MIT IHRER SONICARE / VOYAGER AVEC VOTRE SONICARE / IN VIAGGIO CON IL VOSTRO SONICARE / REIZEN MET UW SONICARE**



**REPLACEMENT BRUSH HEADS / ERSATZBÜRSTENKÖPFE /  
TÊTES DE BROSSSE DE RECHANGE / TESTINE DI RICAMBIO  
PER SPAZZOLINO / VERVANGENDE OPZETBORSTELS**



Replace brush head every 3 months for optimal results.

Um optimale Ergebnisse zu erzielen, tauschen Sie den Bürstenkopf nach 3 Monaten aus.

Pour un résultat optimal, remplacez la tête de brosse tous les 3 mois.

Per ottenere ottimi risultati, sostituite la testina ogni 3 mesi.

Vervang de opzetborstel om de 3 maanden voor optimale resultaten.



4235.020.4914.1

[www.philips.com/Sonicare](http://www.philips.com/Sonicare)