

### Introduction

The upgrade version of this software is **Version 34** and can be used to upgrade Philips HTS6600/37 to the latest status.

This upgrade allows the HTS6600 to improve the following:

1. Improved picture quality

### Upgrade Procedure

#### Step 1 Check your current firmware version

- 1 Power up the set and eject the disc tray, then press **<DISPLAY>** button on the remote control.
- 2 The software version and other information are display on the TV screen as follows:  
SD9.2-VXX 6600-XX X  
Servo : XXXXXXXX Reg:X

#### Example :

SD9.2-V33 6600-12 2 -> Indicates Software version 34, stroke version 37, Default Stroke Version region 2.  
Servo : D1580000 Reg:2 -> Indicates Servo version D1580000 and Region code 2.

#### Note:

Do NOT upgrade your set if the software version number is higher than V34!

The firmware information is also useful when you call Philips Customer Care Center.

#### Step 2 Download Firmware upgrade

- 1 Check you have the following tools:
  - PC (Pentium III 300MHz processor or higher)
  - CD-R/RW writer and writing application software
  - Blank CD-R or CD-RW disc
  - Internet access (broadband or high speed)
- 2 Click the link to download Firmware Upgrade to your PC



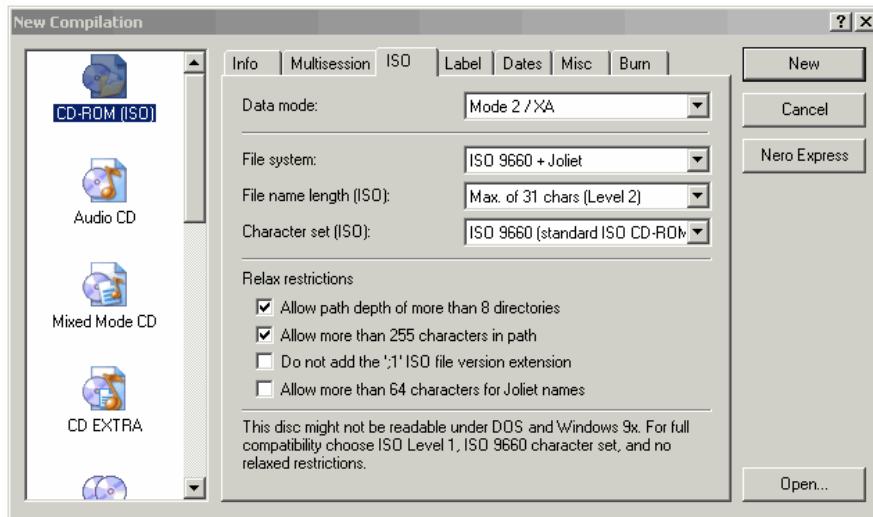
- 3 Unzip the .zip file
  - i) Do not rename the filename.
  - ii) Visit <http://www.winzip.com/> for downloads if you cannot open the .zip file.

#### Step 3 Burning Upgrade on CD-R / CD-RW

- 1 Extract the files by unzipping the zipped file.
- 2 Write the extracted files – not the zip file – onto a blank CD-R or CD-RW disc, using the following settings:
  - File System CD-ROM Joliet
  - File name length : max 31 chars (ISO Level 2)
  - Mode : 2/XA
  - Character set : ISO 9660
  - Single session
  - Write Speed : Low
- 3 Finalize the disc. (The application may do this automatically.)

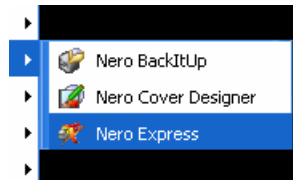
Tip: For more information on burning software we suggest you can refer to two popular burning software programs


[www.nero.com](http://www.nero.com)  
[www.easycdcreator.com](http://www.easycdcreator.com)



### **Using Nero Express 6**

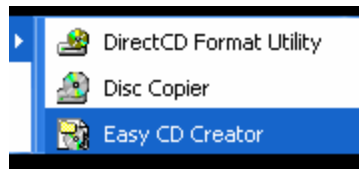
Please make sure you are using Nero Express. You can start Nero Express from the Nero folder in Windows Start menu.



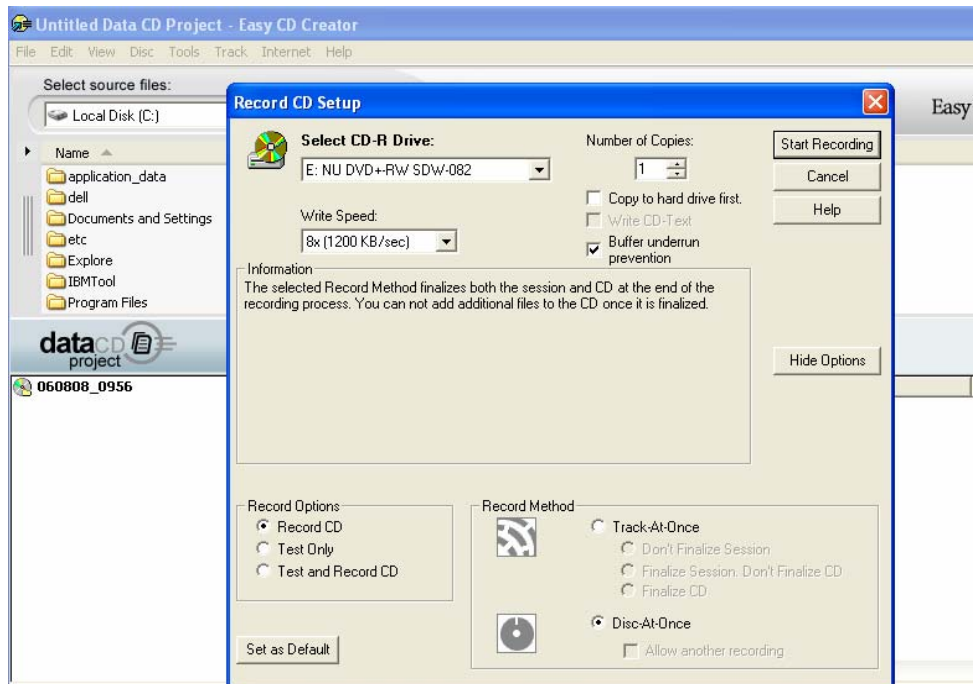
1. Insert a blank CD-R or CD-RW disc.
2. Open Nero Express and select “**Data disc**”.
3. Click on the “**Add**”  tab to browse.
4. Select the unzipped files
5. Click “**Add**” and “**Finished**”.
6. Click on “**Next**” and follow by “**Burn**”. The firmware upgrade will now be burned onto the disc.

### **Using Easy CD Creator**

1. Insert a blank CD-R or CD-RW disc
2. Open Easy CD Creator



3. Select the unzipped files from the browser on top.
4. Click “**Add**” to copy the files below.
5. Select “**Record CD**” in the ‘**File**’ menu.
6. Click “**Start Recording**”, the firmware upgrade will now be burned onto the disc.



#### **Step 4** Apply Upgrade to your Set

1. Power up the set and insert the prepared Upgrade CDR.
2. The set will automatically start upgrading.
3. Set's FTD will display **ERASE**, after which the tray door will open. Remove Disc from set. **DO NOT close the tray door.**
4. The tray door will automatically close and the set will go to standby. Software upgrading is completed.

\*Please do not interrupt the upgrading process by powering off the set. If after 20 minutes of upgrading, the tray door is still OPEN, please call service center for assistance.

\*When the tray door is fully opened, FTD will be blocked, but the set is still upgrading the SW and the door will close automatically after the upgrade ends.

**Your product is successfully upgraded!**

#### **Step 5** Verifying firmware version

To check the firmware version, see **Step 1**.

### **Firmware upgrade history**

#### **Version 35**

- Improved picture quality

#### **Version 33**

- Picture quality observed during the entire playback using PAL Progressive Disc