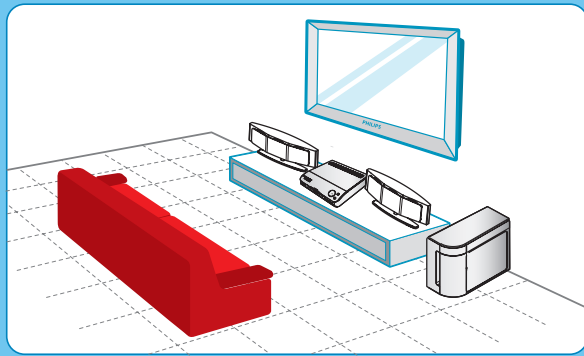


1 Connect

A Placement

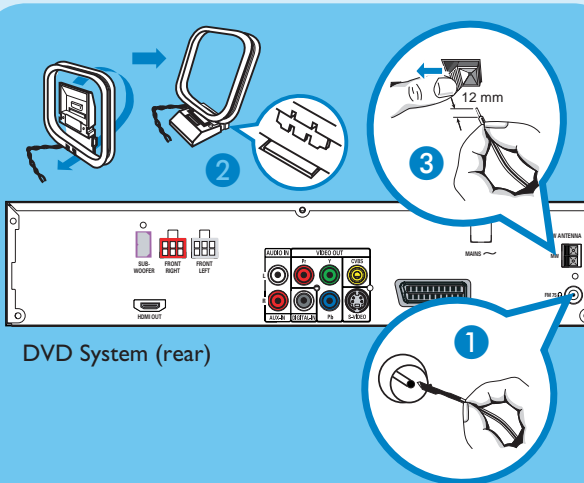
Proper speakers system placement is important to ensure optimum sound performance.



- 1 Place the Ambisound speakers at the normal listening ear level, equal distance from the TV and face straight ahead towards the listening area.
- 2 Place the subwoofer on the floor, at least one metre away from the TV.

B Connect the radio antennas

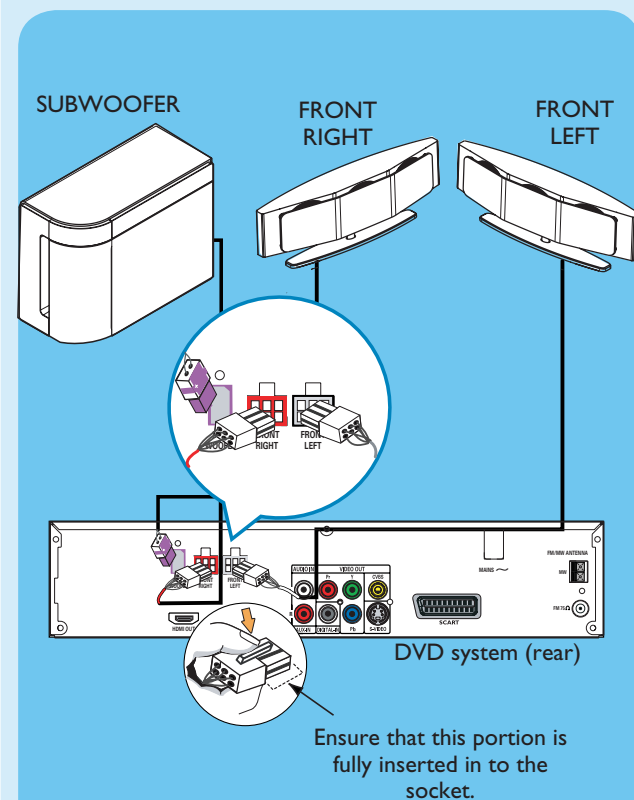
Keep the antennas away from the electronic devices to prevent unwanted interference.



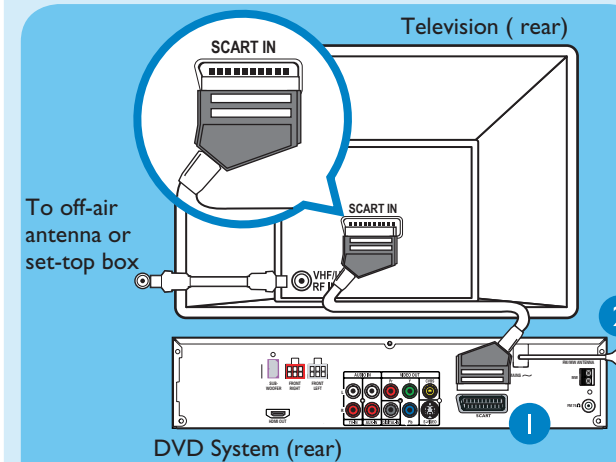
- 1 Connect the FM antenna to the FM socket. Extend the wire and fix its end to the wall.
- 2 Unfold the AM/MW loop antenna and fix the claw into the slot.
- 3 Push the tabs and insert the wires into the AM/MW sockets.

C Connect the Ambisound speakers and subwoofer

Connect the left speaker to the FRONT LEFT socket, right speaker to the FRONT RIGHT socket and the subwoofer to the SUBWOOFER socket at the rear of the DVD system.



D Connect the DVD system to TV

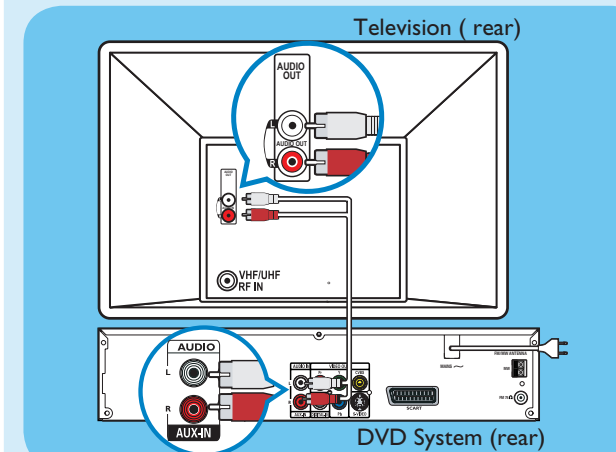


- 1 Use the supplied SCART cable to connect the SCART socket on this DVD system to the SCART IN socket on your TV.
- 2 Plug in the power cable from the DVD system to an AC power outlet.

Note It is important to connect the DVD system directly to your TV. When watching the TV programmes, you can press **TV** on the remote control to get the sound output from the speakers system.

E Connect the audio from other device to DVD system (optional)

Use the red and white audio cables (not supplied) to connect the AUX IN (R/L) sockets on this DVD system to the AUDIO output sockets on your Audio/Video device (for example, DVD recorder, VCR).



Note Press **AUX/DI** on the remote control to get the sound output from the speakers system when watching the TV programme.

2 Set up

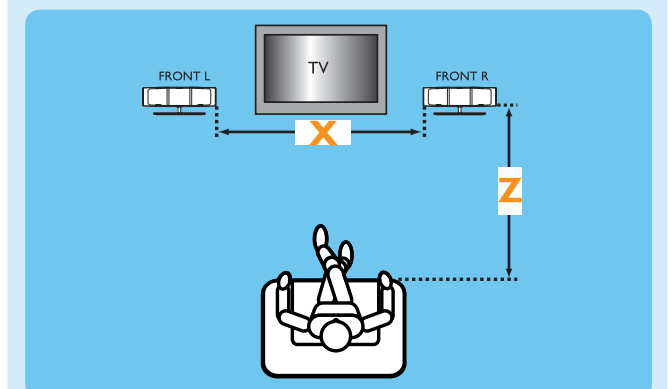
A Finding the viewing channel

- 1 Press **STANDBY ON** on the DVD system.
- 2 Press **SOURCE** on the DVD system until "DISC" appears on the display panel.
- 3 Turn on the TV. Use the TV's remote control to select the correct viewing channel for the DVD system. You should see the blue DVD background on the TV.

Note To search for the correct viewing channel, press the Channel Down button on the TV's remote control repeatedly (or AV, SELECT, button) until you see the blue DVD background.

B Setting up the Ambisound speakers

- 1 Press and hold **SOUND** on the remote control to enter the Ambisound speaker settings mode.
- 2 Use **◀ ▶** keys to view the available settings (ROOM ACOUSTICS, SPEAKER DISTANCE, LISTENING POSITION) and press **OK** to select.
- 3 Use **◀ ▶** keys to select a most suitable predefined setting and press **OK** to confirm.



ROOM ACOUSTICS

HARD - for concrete/glass walls.
SOFT - for wooden walls.

SPEAKER DISTANCE

NEAR - 'X' is less than 1 metre.
DEFAULT - 'X' is between 1~2.5 metres.
FAR - 'X' is more than 2.5 metres.

LISTENING POSITION

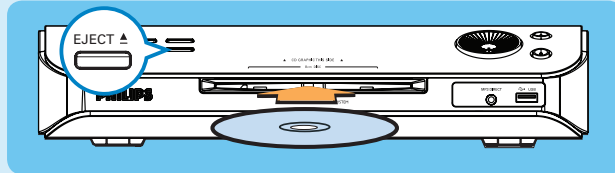
NEAR - 'Z' is less than 1.5 metre.
DEFAULT - 'Z' is between 1.5~2.5 metres.
FAR - 'Z' is more than 2.5 metres.

Note The underlined options are the default setting.

3 Enjoy

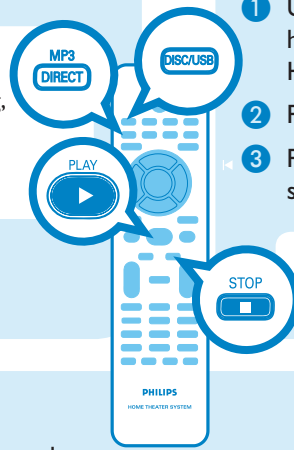
Start disc playback

- 1 Insert a disc into the disc slot with the disc label facing up.



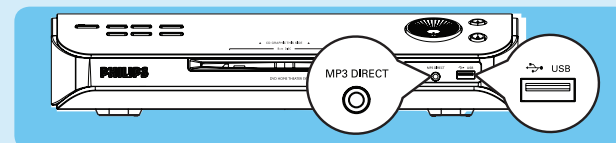
- 2 Playback will start automatically.
- 3 If the disc menu appears, use **▼▲** keys to select an option in the menu and press **PLAY ▶** to start playback.
- To enjoy the powerful surround sound from the Ambisound speakers, press **SURROUND** to turn on the multi-channel surround mode.
- 4 Press **STOP ■** to stop playback.
- 5 Press **EJECT ▲** to remove the disc.

Note When you press PLAY button again, the playback will resume from where it last stopped. To start playback from the beginning, you have to press STOP button two times to cancel the resume mode, then press PLAY button.



Playback from the USB

- 1 Insert your USB device into the USB port and wait for the message to appear on the screen.
- 2 Press **DISC/USB** to access the contents on your USB device.
- 3 Press **OK** to start playback.
- 4 To stop playback, press **DISC/USB** again to switch to 'DISC' mode. You can unplug your USB device now.



Playback from the portable audio/HDD player

- 1 Use the supplied MP3 direct cable to connect the headphone output socket on your portable audio/HDD player to the MP3 DIRECT socket.
- 2 Press **MP3 DIRECT** on the remote control.
- 3 Press PLAY on your portable audio/HDD player to start playback.

Note You can only control the playback features using your portable audio/HDD player.

Troubleshooting

For more troubleshooting tips, see the user manual.

No picture.

- Press DISC/USB button on the remote control.
- Check the connection to the TV and ensure the plugs are firmly in place.

No sound.

- Check the speaker connections and settings.
- Check the audio connections and press SOURCE button to select the correct input source.
- Press SURROUND button to turn on the multi-channel surround output.

The DVD system does not work.

- Disconnect the power cord from the power outlet for a few minutes. Reconnect the power cord and try again.

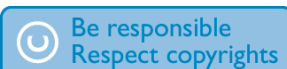
Need help?

User Manual

See the user manual that came with your Philips DVD System

Online

Go to www.philips.com/welcome



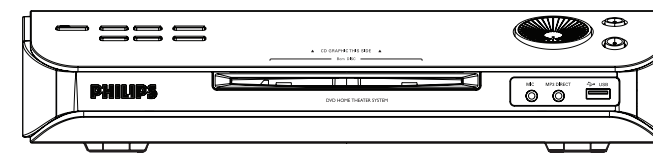
2007 © Koninklijke Philips N.V.
All rights reserved.
12 NC 3139 245 21782
www.philips.com

Quick Start Guide



- 1 Connect
- 2 Set up
- 3 Enjoy

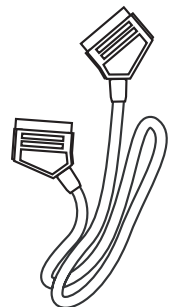
What's in the box?



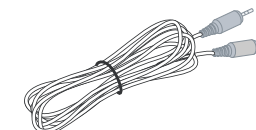
DVD system



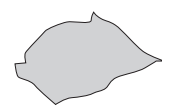
Remote Control and 2 batteries



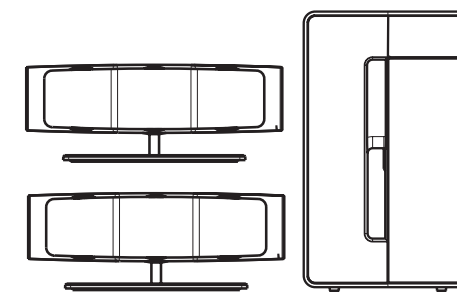
Scart cable



MP3 direct cable for portable audio player



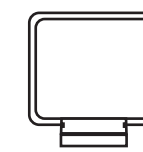
Micro fibre cleaning cloth



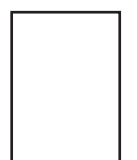
2 Ambisound speakers and subwoofer



FM wire antenna



AM/MW loop antenna



User Manual

