

2 Set up

Adjusting the speakers

- 1 Press **⏻** on main unit to turn it on.
- 2 Press **SURR** to switch to multi-channel surround mode.
- 3 Press **PROG** to access the system setup menu.

To adjust the audio delay for the centre speaker:

- Press **⏮** or **⏭** until 'CENTER DELAY' appears.
- Press **PROG**.
- Rotate the **VOLUME** control to change the delay time.

To adjust the audio delay for the rear speaker:

- Press **⏮** or **⏭** until 'REAR DELAY' appears.
- Rotate the **VOLUME** control to change the delay time.

- 4 To confirm all settings, press **PROG**.

See the accompanying user manual for other options to fine-tune your speaker settings.

3 Enjoy

Start Playback

- 1 Press **⏻** on the main unit to turn it on.

Note Ensure all the audio/video devices are connected before you start playback.

- 2 Turn on the connected audio/video device.
- 3 Press **PLAY** on the connected audio/video device.
- 4 Press **DI/AUX** to select the preferred audio input source.

Playback from portable audio player

Listen to audio from your portable audio player by connecting the device to your main unit.

- 1 Connect the MP3 LINK cable (supplied) from the MP3 LINK socket on the main unit to the headphone output socket on your portable audio player.
- 2 Press **PLAY** on your portable audio player.
- 3 Press **MP3 LINK** to listen to the playback.

See the accompanying user manual for radio tuning and other playback settings.

Register your product and get support at
www.philips.com/welcome

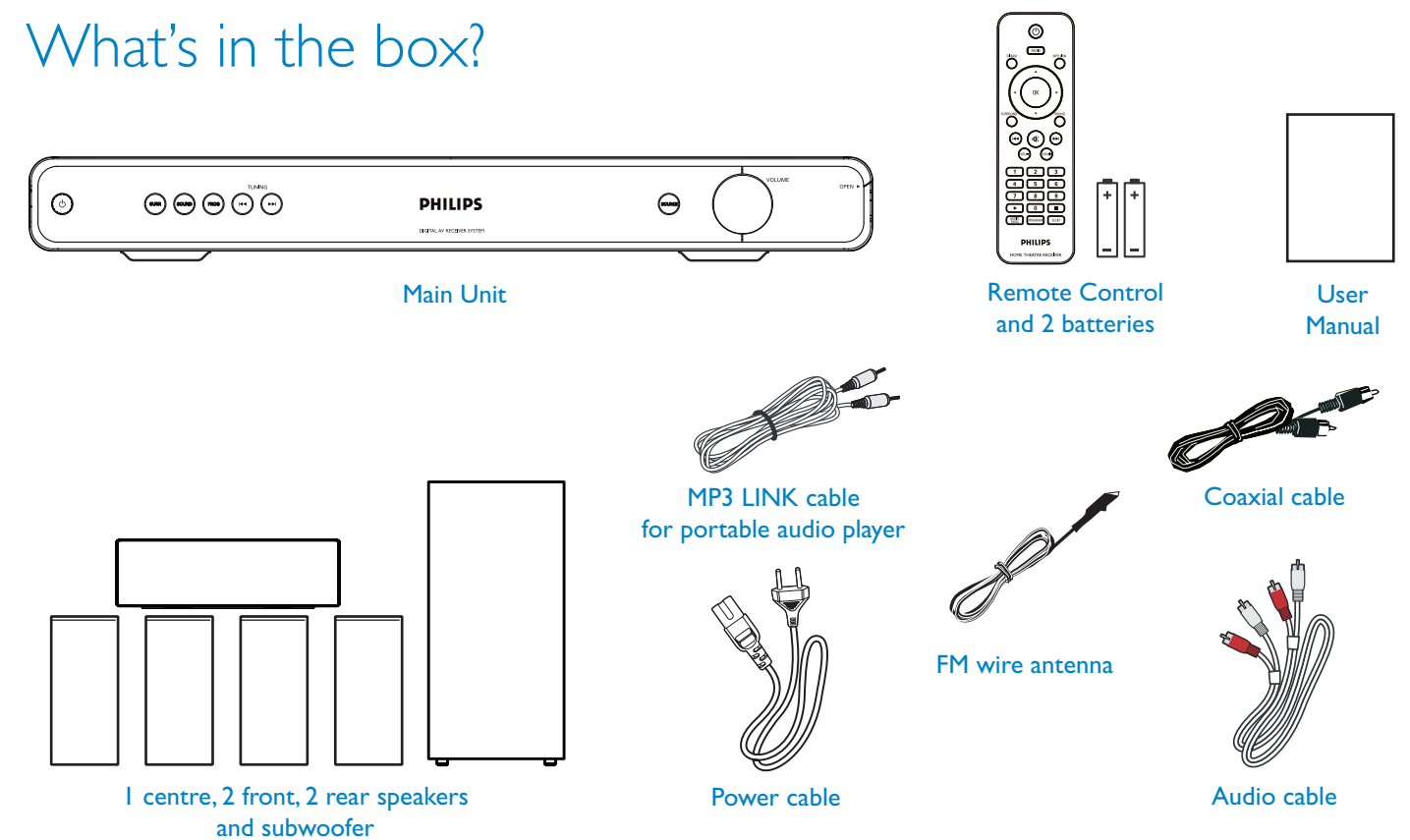
HTR3465



- 1 Connect
- 2 Set up
- 3 Enjoy

Quick Start Guide

What's in the box?



Need help?

User Manual

See the user manual that came with your Philips Digital AV Receiver System.

Be responsible
Respect copyrights



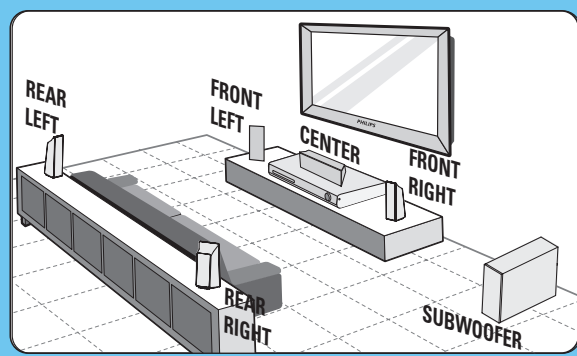
2008 © Koninklijke Philips N.V.
All rights reserved.
www.philips.com
sgpjy_0814/98_4

PHILIPS

1 Connect

A Placement

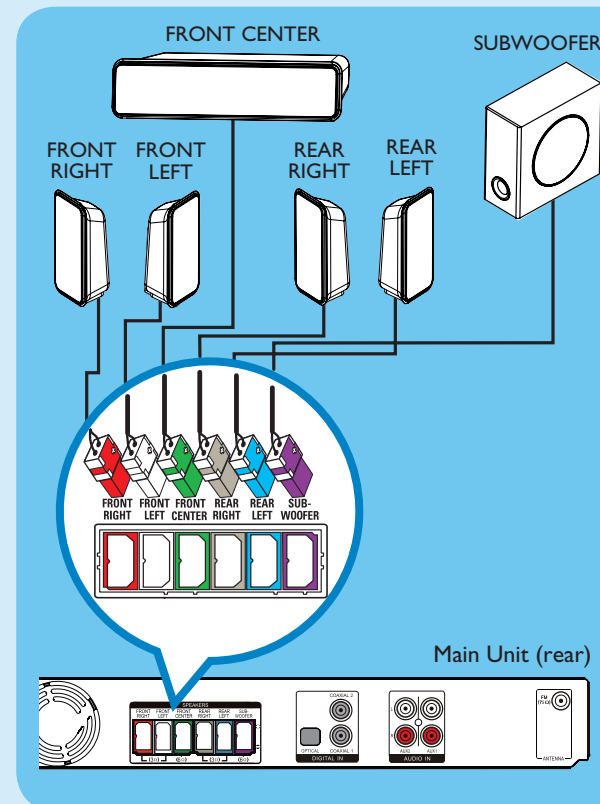
Proper speakers system placement is important to ensure optimum sound performance.



- 1 Place the centre speaker above or close to the TV.
- 2 Place the subwoofer on the floor, at least one metre away from the TV.
- 3 Place the front speakers at equal distances from the TV.
- 4 Place the rear speakers at the back or beside the listening position.

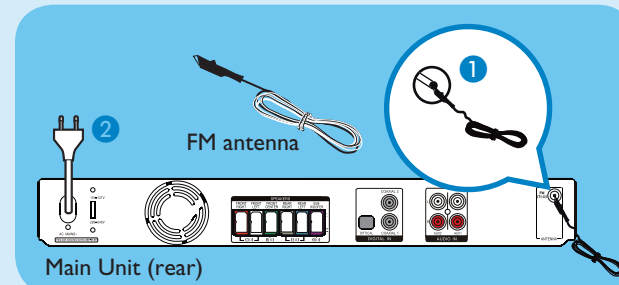
B Connect the speakers and subwoofer

Connect the various coloured plugs from the speakers and subwoofer to the same coloured sockets at the rear of the main unit.



C Connect the radio antenna and power cable

Keep the antennas away from the electronic devices to prevent unwanted interference.

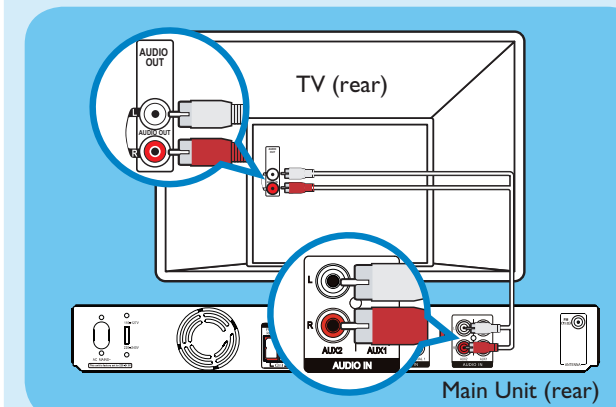


- 1 Connect the FM antenna (supplied) to the inner pin of the FM 75 Ω socket. (For some models, it has been connected in the factory.) Extend the wire for optimum reception.
- 2 Connect the power cable from the main unit to the AC power outlet.

D Connect the audio from audio/video devices (TV, DVD Player, Recorder, Cable/Satellite Receiver or Game Console) (optional)

Option 1: Using the analogue audio sockets (Connect audio output from TV)

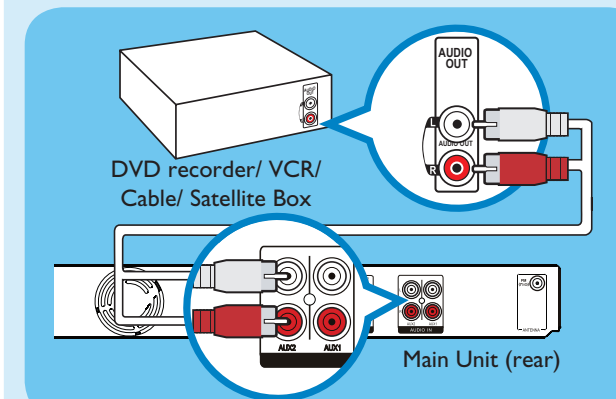
To hear the TV audio through this unit, use a red and white audio cables (supplied) to connect the AUDIO IN-AUX sockets on the main unit to the AUDIO OUT sockets on your TV.



Note When watching the TV programs, you can press **DI/AUX** repeatedly on the remote control until 'AUX 1' or 'AUX 2' is displayed to get the sound output from the speakers.

Option 2: Using the analogue audio sockets (Connect audio output from other device)

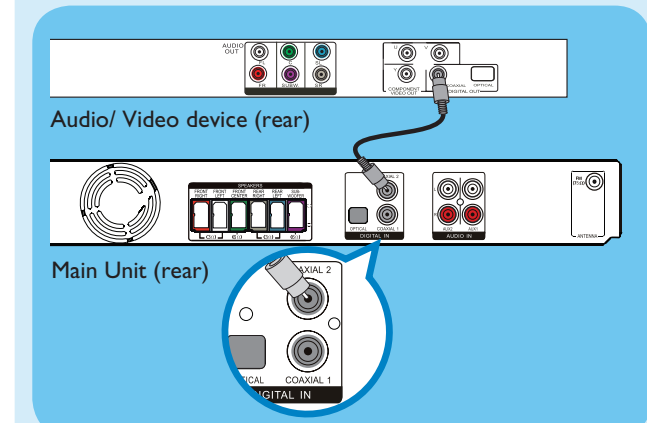
Connect a red and white audio cables (supplied) to connect the AUDIO IN-AUX sockets on the main unit to the AUDIO OUT sockets on the connected device (for example, DVD recorder, VCR, Cable/Satellite Box).



Note Press **DI/AUX** repeatedly on the remote control until 'AUX 1' or 'AUX 2' is displayed as the source you want to listen to.

Option 3: Using the Coaxial In socket

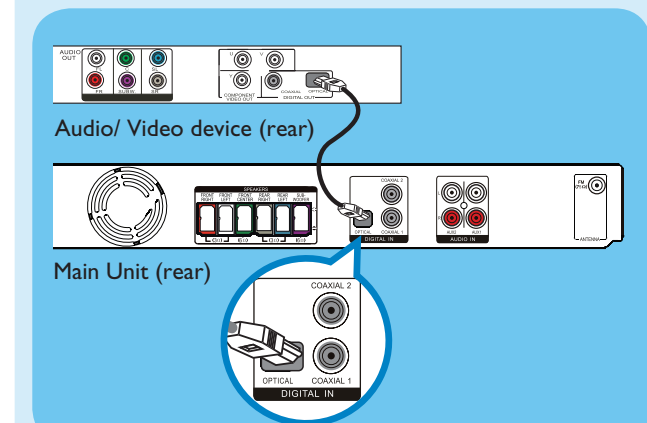
Connect a coaxial cable (supplied) from the DIGITAL IN-COAXIAL socket on the main unit to the COAXIAL OUT sockets on the other device.



Note Start playback on the device. Press **DI/AUX** repeatedly on the remote control until 'COAX IN1' or 'COAX IN2' is displayed as the source you want to listen to.

Option 4: Using the Optical In socket

Connect an optical cable (not supplied) from the DIGITAL IN-OPTICAL sockets on the main unit to the OPTICAL OUT sockets on the other device.



Note Start playback on the device. Press **DI/AUX** repeatedly on the remote control until 'OPTI IN' is displayed as the source you want to listen to.