

# PHILIPS

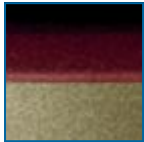
Dry electric shaver

Shaver series 3000

CloseCut heads Flex & Float

Corded use only

HQ6940/16



## Close even on the neck

### CloseCut blades

A close and comfortable shave for an affordable price. The Reflex Action system of this Philips shaver is combined with the Super Lift & Cut technology, guaranteeing a close and comfortable shave.

#### **Comfortably close**

- Super Lift & Cut technology
- Replacement heads

#### **Adjusts to every curve of your face and neck**

- Reflex Action system

#### **Moustache and sideburn trimming**

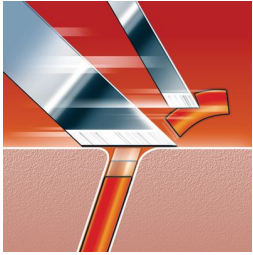
- Pop-up trimmer

#### **Easy grip**

- Ergonomically designed grip for easy handling

## Highlights

### Super Lift & Cut technology



The dual blade system of this electric shaver lifts hairs to cut comfortably below skin level.

### Replacement heads

For maximum performance replace the shaving heads of your Philips shaver every two years with HQ55.

### Reflex Action system



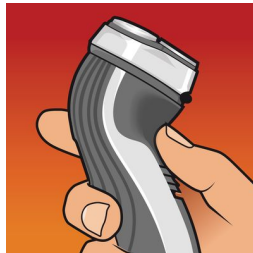
Automatically adjusts to every curve of your face and neck.

### Pop-up trimmer



Full width, pop-up trimmer is perfect for grooming sideburns and moustache.

### Easy grip for optimal handling



This ergonomically designed grip enables easy handling for a comfortable shave.

## Specifications

### Shaving Performance

**Shaving system:** Super Lift & Cut technology  
**Contour-following:** Reflex Action system, Individual floating heads

### Ease of use

**Operation:** Corded only

### Accessories

**Maintenance:** Cleaning brush, Protective cap

### Power

**Automatic voltage:** 100–240 V

### Service

**Replacement head:** Replace every yr with HQ56

