

HP8668

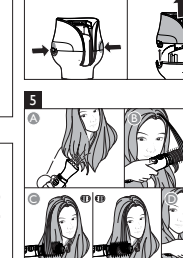
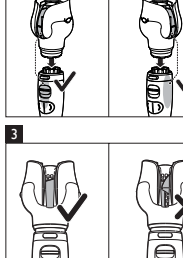
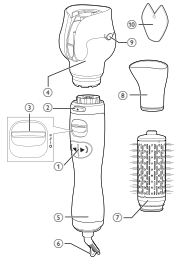


Table with 2 columns: EN, HR, DE, FR, ES, IT, NL, and their corresponding language names.

PHILIPS

When the appliance is connected to the power, never leave it unattended. Never use any accessories or parts from other manufacturers...

C) Hair attachment (0)

- 1. Place the brush (0) at the hair tips, and use the contact buttons (0) to roll up the stand from the ends to the roots.
- 2. Keep the brush at the hair roots until the hair is completely dry.

Start cutting from the back of the head. Turn on the device by selecting both arrow settings # Fig. 4. Check the operating status before inserting the hair. While the rotating tool makes sure there is no catching the opening.

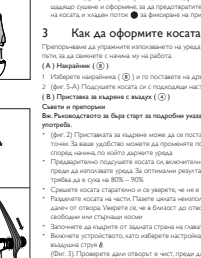
D) After use

- 1. Switch off the appliance and unplug it.
- 2. Place a hair-resistant surface on top of the comb.
- 3. Clean the appliance and attachments with damp cloth.
- 4. Keep it in a safe and dry place. You can also hang it with the hanging loop (0).

За допълнителна защита въ съответствие да инсталирате в електрозащитна мрежа на банята дефектно-токова защита (RCD). Тази RCD трябва да е с обхват работен ток на утеша не повече от 30 mA.

Български

- 1. Включете тримера.
- 2. Проверете работния статус преди вмъкване на косата.
- 3. Проверете работния статус преди вмъкване на косата.



PHILIPS

Приложение А: Проверка на работния статус на двигателя. Проверка на работния статус на двигателя. Проверка на работния статус на двигателя.

Служба за поддръжка

- 1. Проверете работния статус на двигателя.
- 2. Проверете работния статус на двигателя.

Как да оформите косата си. Приложението А: Проверка на работния статус на двигателя. Проверка на работния статус на двигателя.

Служба за поддръжка

- 1. Проверете работния статус на двигателя.
- 2. Проверете работния статус на двигателя.

Човешки коса е естествено електрически проводник. Особено опасен е токът в косата, който е свързан с електрически проводник.

Служба за поддръжка

- 1. Проверете работния статус на двигателя.
- 2. Проверете работния статус на двигателя.

Ако допълнително охрана. Ако допълнително охрана. Ако допълнително охрана.

Служба за поддръжка

- 1. Проверете работния статус на двигателя.
- 2. Проверете работния статус на двигателя.

Specifications are subject to change without notice

© 2010 Philips North America Consumer Electronics

© 2010 Philips North America Consumer Electronics

© 2010 Philips North America Consumer Electronics

© 2010 Philips North America Consumer Electronics

© 2010 Philips North America Consumer Electronics

© 2010 Philips North America Consumer Electronics

© 2010 Philips North America Consumer Electronics

© 2010 Philips North America Consumer Electronics

© 2010 Philips North America Consumer Electronics

© 2010 Philips North America Consumer Electronics

© 2010 Philips North America Consumer Electronics

© 2010 Philips North America Consumer Electronics

© 2010 Philips North America Consumer Electronics

© 2010 Philips North America Consumer Electronics

© 2010 Philips North America Consumer Electronics

© 2010 Philips North America Consumer Electronics

© 2010 Philips North America Consumer Electronics

© 2010 Philips North America Consumer Electronics

© 2010 Philips North America Consumer Electronics

© 2010 Philips North America Consumer Electronics

© 2010 Philips North America Consumer Electronics

© 2010 Philips North America Consumer Electronics

© 2010 Philips North America Consumer Electronics

© 2010 Philips North America Consumer Electronics

© 2010 Philips North America Consumer Electronics

© 2010 Philips North America Consumer Electronics

© 2010 Philips North America Consumer Electronics

© 2010 Philips North America Consumer Electronics

© 2010 Philips North America Consumer Electronics

© 2010 Philips North America Consumer Electronics

© 2010 Philips North America Consumer Electronics

© 2010 Philips North America Consumer Electronics

© 2010 Philips North America Consumer Electronics

© 2010 Philips North America Consumer Electronics

© 2010 Philips North America Consumer Electronics

© 2010 Philips North America Consumer Electronics

© 2010 Philips North America Consumer Electronics

© 2010 Philips North America Consumer Electronics

© 2010 Philips North America Consumer Electronics

© 2010 Philips North America Consumer Electronics

© 2010 Philips North America Consumer Electronics

© 2010 Philips North America Consumer Electronics

© 2010 Philips North America Consumer Electronics

© 2010 Philips North America Consumer Electronics

© 2010 Philips North America Consumer Electronics

© 2010 Philips North America Consumer Electronics

© 2010 Philips North America Consumer Electronics

© 2010 Philips North America Consumer Electronics

© 2010 Philips North America Consumer Electronics

© 2010 Philips North America Consumer Electronics

© 2010 Philips North America Consumer Electronics

© 2010 Philips North America Consumer Electronics

© 2010 Philips North America Consumer Electronics

© 2010 Philips North America Consumer Electronics

© 2010 Philips North America Consumer Electronics

© 2010 Philips North America Consumer Electronics

© 2010 Philips North America Consumer Electronics

© 2010 Philips North America Consumer Electronics

© 2010 Philips North America Consumer Electronics

© 2010 Philips North America Consumer Electronics

© 2010 Philips North America Consumer Electronics

© 2010 Philips North America Consumer Electronics

