



Philips
Airstyler

Dynamic Volume Brush
Ceramic



HP8665/00

Dry and Style with care

The Dynamic Volume brush is a rotating airstyler that provides the most caring way to combine drying and styling your hair. It uses natural bristles for smoother hair and less friction. The special 'Care' setting provides the best temperature for drying your hair

Beautifully styled hair

- 1000 W for professional results
- Natural mixed bristle brush: 2 brush heads (30 mm and 50 mm)

Less Hair Damage

- Best drying temperature with 'Care' setting
- More Care with ion conditioning for shiny, frizz-free hair
- More Care with ceramic elements, providing far-infrared heat
- Natural bristles for smoother hair and less friction

Easy to use

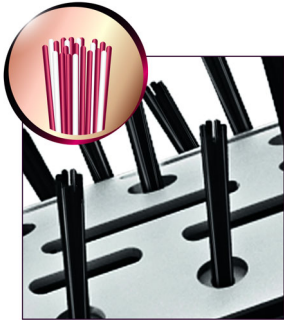
- 2 different rotation speed settings
- The brush can be rotated in both directions
- The brush caps protect the bristles from any damage



PHILIPS

Highlights

Natural bristles



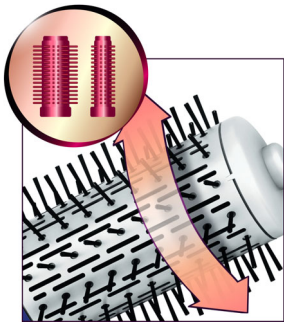
Natural bristles are used in the brush to give the hair a smoother feeling. With less friction, the hair gets less damaged.

'Care' setting



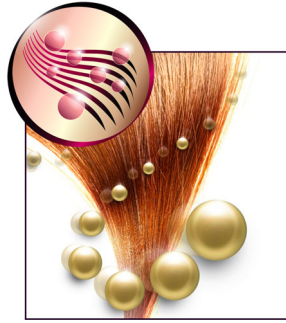
The 'Care' temperature provides the optimal drying temperature and gives additional protection from overheating the hair. With the same powerful airflow, you will get the best results in a caring way.

2-way rotation



The brush can be rotated in both directions for easy handling and the creation of a variety of styles.

Ionic Care



Ionic conditioning enables anti-static drying. Charged negative ions eliminate static hair, condition the hair and smooth down the hair cuticles to intensify the hair's shine and glossiness. The result is smooth and frizz-free hair that shines beautifully.

More care with Ceramic element



The ceramic element issues far-infrared heat, which has a gentle warmth that helps dry your hair from within and protects it from overdrying, without compromising on speed and effectiveness.

Brush caps



The brush caps protect the bristles from any damage when storing the Dynamic Volumebrush.

Specifications

Technical specifications

- Wattage: 1000 W
- Cord length: 1.8 m
- Colour/finishing: white and purple

Features

- Ceramic coating
- Ion conditioning
- Swivel cord
- Hanging loop
- Settings: 3 heat/speed settings

Attachments

- Natural mixed bristle brush: 2 brush heads (30 mm and 50 mm)

Hair type

- End result: Voluminous
- Hair length: Medium, Long
- Hair thickness: Thin, Medium, Thick

Service

- 2-year guarantee

