

DryCare Prestige Hairdryer

- Moisture Protect infrared sensor
- Ionic conditioning
- 6 speed/temperature settings
- 2300W

HP8280/03

A hairdryer that preserves your hair's natural hydration

For a healthy shine

The innovative sensor in our DryCare Prestige hairdryer uses MoistureProtect infrared technology to diagnose your hair condition and adapts the temperature to preserve natural hydration. This gives up to 85% more moisture preservation*

Benefits

Caring technology

- MoistureProtect Sensor
- Protection from overheating

MoistureProtect technology

- Perfect moisture protection with exclusive sensor

Beautifully styled hair

- Ionic conditioning prevents static for frizz-free, shiny hair

Ease of use

- Six speed and heat settings for perfect control
- Cool Shot to set your style

PHILIPS

MoistureProtect

Features

MoistureProtect Sensor



This hairdryer has innovative Infrared MoistureProtect technology that continuously monitors and adapts the temperature to match your hair's drying needs. The intelligent sensor measures your hair's surface temperature 4000 times in one drying session, and adjusts the heat to prevent moisture loss and cuticle damage. With ultimate moisture retention, your hair gets our best shine and softness. You can switch the sensor on/off based on your needs.

MoistureProtect technology



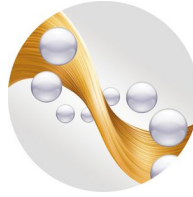
Uses infrared technology to diagnose your hair and adapts the temperature to preserve its natural hydration.

ThermoProtect temperature



The ThermoProtect temperature provides the optimal drying temperature and gives additional protection from overheating the hair. With the same powerful airflow, you can get the best results while caring for your hair.

Ionic conditioning



Ionic hairdryers emit charged negative ions that help your hair dry faster, eliminate static, condition the hair and smooth down the hair cuticles to intensify the hair's shine and glossiness. The result is hair that is smooth, shiny and frizz-free.

Six speed and heat settings



Easily set and control the heat and speed settings to create the perfect style. Choose from three heat and two speed settings for full control and precise drying and styling.

Cool Shot



The Cool Shot button provides an intense burst of cool air. It is used after styling to finish and set the style.

Specifications

Please note that this is a pre-sales leaflet. The contents of this leaflet reflect the best of our knowledge per date and country mentioned above. The contents of this leaflet are subject to change without notice. Philips does not accept any liability as to the contents of this leaflet.

Technical specifications

Wattage	2100-2300W W
Motor	DC
Cord length	2.5 m
Dual Voltage	No
Voltage	220-240 V

Features

Cool Shot	Yes
6 temperature settings	Yes

Service

2-year worldwide guarantee	Yes
----------------------------	-----

Caring technologies

Ionic Care	Yes
MoistureProtect technology	Yes

Accessories

Nozzle	Diffuser
--------	----------

Packaging dimensions

Height	10.00 cm
Width	32.00 cm
Depth	23.50 cm
Net weight	0.93 kg
Gross weight	1.08 kg
EAN	08710103667506
Number of products included	1
Country of origin	CN
Harmonised Systems Code	851631

Outer Carton

Length	41.90 cm
Width	33.00 cm
Height	24.90 cm
Gross weight	4.74 kg
EAN	18710103667503

MoistureProtect

Number of consumer packages 4



data subject to change
2019, May 24
Version: 6.1.1
EAN: 08710103667506

© 2019 Koninklijke Philips N.V.
All rights reserved.

Specifications are subject to change without notice. Trademarks are the property of Koninklijke Philips N.V. or their respective owners.

www.philips.com