



Philips MoistureProtect DryCare Prestige Hairdryer

Moisture Protect infrared sensor
Ionic conditioning
6 speed/temperature settings
2300W



HP8280/03



A hairdryer that preserves your hair's natural hydration

For a healthy shine

The innovative sensor in our DryCare Prestige hairdryer uses MoistureProtect infrared technology to diagnose your hair condition and adapts the temperature to preserve natural hydration. This gives up to 85% more moisture preservation*

Caring technology

- MoistureProtect Sensor
- Protection from overheating

MoistureProtect technology

- Perfect moisture protection with exclusive sensor

Beautifully styled hair

- Ionic conditioning prevents static for frizz-free, shiny hair

Ease of use

- Six speed and heat settings for perfect control
- Cool Shot to set your style

PHILIPS

Highlights

MoistureProtect Sensor



This hairdryer has innovative Infrared MoistureProtect technology that continuously monitors and adapts the temperature to match your hair's drying needs. The intelligent sensor measures your hair's surface temperature 4000 times in one drying session, and adjusts the heat to prevent moisture loss and cuticle damage. With ultimate moisture retention, your hair gets our best shine and softness. You can switch the sensor on/off based on your needs.

MoistureProtect technology



Uses infrared technology to diagnose your hair and adapts the temperature to preserve its natural hydration.

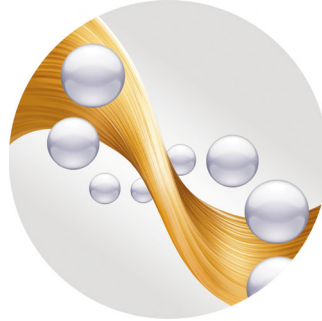
ThermoProtect temperature



The ThermoProtect temperature provides the optimal drying temperature and gives additional protection from overheating the hair. With the same

powerful airflow, you can get the best results while caring for your hair.

Ionic conditioning



Ionic hairdryers emit charged negative ions that help your hair dry faster, eliminate static, condition the hair and smooth down the hair cuticles to intensify the hair's shine and glossiness. The result is hair that is smooth, shiny and frizz-free.

Six speed and heat settings



Easily set and control the heat and speed settings to create the perfect style. Choose from three heat and two speed settings for full control and precise drying and styling.

Cool Shot



The Cool Shot button provides an intense burst of cool air. It is used after styling to finish and set the style.

Specifications

Technical specifications

- Wattage: 2100-2300W W
- Motor: DC
- Cord length: 2.5 m
- Dual Voltage: No
- Voltage: 220-240 V

Features

- Cool Shot
- 6 temperature settings

Service

- 2-year worldwide guarantee

Caring technologies

- Ionic Care
- MoistureProtect technology

Accessories

- Nozzle: Diffuser



Issue date 2018-04-11

Version: 6.1.1

EAN: 08 71010 36675 06

© 2018 Koninklijke Philips N.V.
All Rights reserved.

Specifications are subject to change without notice.
Trademarks are the property of Koninklijke Philips N.V.
or their respective owners.

www.philips.com