

PHILIPS

Hairdryer

SalonShine Care



HP8200



Professional style, professional care SalonShine Care

Get the style you want whilst looking after your hair. The SalonDry Pro offers 1600W of professional drying power.

Beautifully styled hair

- Specially designed for Asians
- 1600W for gentle drying
- Six flexible speed and temperature settings for full control
- Coolshot for seal in shine and fix your style
- Narrow concentrator for focused airflow

Less Hair Damage

- EHD+ technology for more protection and shinier results
- Thermoprotect for a constant caring temperature of 57°C

Easy to use

- Foldable handle for easy portability
- Compact design for easy handling
- Easy storage hook for convenient storage
- 1.8 m cord for maximum flexibility

Highlights

Specially designed for Asians



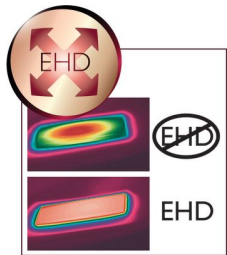
Specially designed for Asians

1600W for gentle drying



This 1600W hairdryer creates the optimum level of airflow and gentle drying power, for beautiful results every day.

EHD+ technology



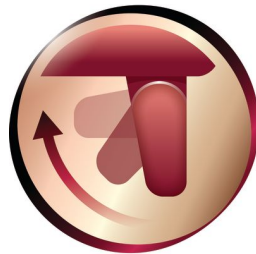
Advanced Philips EHD+ technology means that your dryer will always distribute the heat very evenly - even at high temperatures, and prevents damaging hot spots. This gives added protection and thus helps to keep your hair healthy and shiny.

Six flexible speed and temperature settings



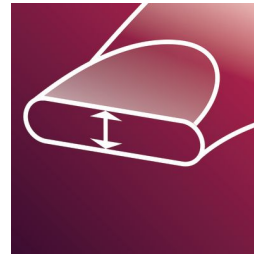
The speed and heat required can be easily adjusted to create the perfect style. Six different settings ensure full control for precise and tailored styling.

Foldable handle



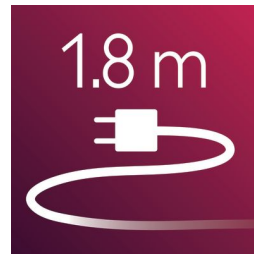
This hairdryer benefits from a foldable handle. The result is a small, compact hairdryer that will pack easily into even the smallest spaces and that you can take virtually anywhere.

Narrow concentrator



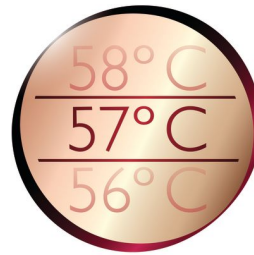
The concentrator of the hair dryer works by focusing the flow of air through the opening onto specific areas. This results in precise styling and is great for touch ups or to finish a hair style.

1.8 m cord



1.8 m cord for maximum flexibility

Thermoprotect 57 C



Built in protection for hair, Thermoprotect retains a constant caring temperature of 57°C. This allows you to quickly dry your hair without overdrying, maintaining your hair's natural moisture level, for shiny healthy looking hair.



Specifications

Technical specifications

Wattage: 1600 W

Cord length: 1,8 m

Voltage: 220 V

Features

Cool shot

Foldable handle

Hanging loop

Settings: 6 heat/speed settings

Caring technologies

Thermoprotect

Service

2-year guarantee

