

PHILIPS

2 in 1

Satinelle Sensitive

COMBINATION EPILATOR/SHAVER
DEPILADORA Y RASURADORA
COMBINADAS

For long-lasting hair removal
Para una eliminación de vello duradera

1



Epilator with
exclusive
Sens-Relief
System for
maximum comfort

Depiladora con sistema
Sens-Relief exclusivo
para mayor comodidad

2



Shaving Head for sensitive areas

Cabezal rasurador para zonas
sensibles

Two Speeds
Dos
Velocidades

HP6416



PHILIPS

IMPORTANT SAFEGUARDS

When using an electric appliance, basic precautions should always be followed, including the following:

Read all instructions before using this appliance.

DANGER

To reduce the risk of electric shock:

1. Do not reach for an appliance that has fallen into water. Unplug immediately.
 2. Do not use while bathing or in a shower.
 3. Do not place or store appliance where it can fall or be pulled into a tub or sink. Do not place in or drop into water or other liquid.
 4. Always unplug this appliance from the electrical outlet immediately after using.
 5. Unplug this appliance before cleaning.
 6. Do not use an extension cord with this appliance.
-

WARNING

To reduce the risk of burns, fire, electric shock, or injury to persons:

1. This appliance should never be used by, on, or near children or invalids. Keep out of reach of children.
2. Use this appliance for its intended household use as described in this manual. Do not use attachments not recommended by Philips Electronics North America Corporation.
3. Never operate this appliance if it has a damaged cord or plug, if it is not working properly, if it has been dropped or damaged, or dropped into water. Return the appliance to an Authorized Norelco Service Location for examination and repair.
4. Keep the cord away from heated surfaces.

5. Never drop or insert any object into any opening.
 6. Do not use outdoors.
 7. Do not operate where aerosol (spray) products are being used or where oxygen is being administered.
 8. **Always check rotating discs before use. Do not use this epilator with damaged or broken discs, as injury may occur.**
 9. Always check shaving foil before use. Do not use a shaving head with a damaged or broken foil, as injury may occur.
 10. Always attach plug to appliance first, then to outlet. Be certain that plug is inserted firmly into appliance. To disconnect, slide switch to OFF position, then remove plug from outlet.
 11. To prevent possible damage to the cord, do not wrap cord around the appliance.
 12. An appliance should never be left unattended when plugged in.
 13. When appliance is on, keep it away from the hair on your head, eyelashes, eyebrows, clothing, brushes, wires and cords to prevent accidents, injury or damage.
 14. **Only use epilating head on dry legs. Do not use on other body areas.**
 15. If you have varicose veins, spots, moles or blemishes, or your skin is sensitive or irritated, or you have in-grown hairs or the tendency towards producing in-grown hairs, do not use epilating head attachment, use the shaving head attachment.
-

SAVE THESE INSTRUCTIONS

IMPORTANT

Please read these instructions completely before using this appliance. The following information and precautions are important when using the epilating head:

- ▶ **CAUTION:** Methods of removing hair by the root can cause ingrown hairs and minor skin injuries. Please consult your doctor if you have any questions about the use of the appliance.
- ▶ Do not use the epilating head if you suffer from varicose veins, spots, moles or blemishes, or when the skin is irritated, or if you have in-grown hairs or the tendency towards producing in-grown hairs. Consult your doctor first.
- ▶ Use of the Satinelle Sensitive Epilator may cause reddening or irritation of the skin. This is a normal reaction which should quickly disappear. However, if irritation remains for more than three days, consult your doctor.
- ▶ **Any minor injury resulting from hair removal may allow bacteria to penetrate the injury site potentially causing small scars or a change in pigmentation of the skin. The risk of infection may be minimized by thoroughly cleaning the rotating discs before and/or after each use (see Maintenance section).**
- ▶ The epilator head should only be used after prior consultation with your doctor if you have or experience:
 - Open wounds
 - Eczema, psoriasis (scaly eczema), inflamed skin reactions such as folliculitis, skin rashes or the tendency to allergy or allergic skin reactions
 - Body acne
 - Immune deficiency or disorders
 - Couperose, rosacea, or varicose veins
 - Pregnancy
 - Reduced skin immunity as a result of diabetes, pregnancy, Raynaud's disease, etc.
 - Hemophilia
 - If you have moles, raised skin bumps, etc.
- ▶ If you have been or begin taking hormone medication, or have recently been pregnant, a change in your hormone levels may influence the thickness, color or amount of hair growth. This is caused by the hormonal changes, not by this method of hair removal.

- ▶ **When removing hair using the epilator head from the area behind knees, be sure to keep skin stretched tightly to prevent pinching of the skin by the rotating discs.**
- ▶ When using the epilator for the first time, you may feel some discomfort, irritation or experience reddening of the skin. This is because the hairs are actually removed at the root. The discomfort you feel will tend to lessen with successive uses. You may wish to remove hair in the evening so if any reddening occurs it will diminish overnight.
- ▶ Use only the cord provided.
- ▶ Clean appliance regularly following **MAINTENANCE** instructions.

PHILIPS

60-DAY MONEY-BACK GUARANTEE

If you are not fully satisfied with your Philips Satinelle Sensitive 2 in 1 Product, Philips will refund you the full purchase price.

The product must be shipped prepaid by insured mail, insurance prepaid, and have the sales receipt, indicating purchase price and the date of purchase, enclosed. The product must be postmarked **no later than 60 days** after the date of purchase. Philips reserves the right to verify the purchase price of the product and limit refunds not to exceed suggested retail price.

Send dated sales receipt, your complete name and address as indicated below, and the product, prepaid to:

Norelco Consumer Products Company
A Division of Philips Electronics North America Corporation
P.O. Box 1116
Skokie, IL 60076

Please allow 4-6 weeks for delivery of check. (Please Print)

Name _____

Address _____

City _____

State _____ Zip _____

Telephone No. (____) _____

AREA CODE

REASON FOR RETURNING: _____

Table of Contents

ENGLISH INSTRUCTIONS

FEATURES 2 - 3

INTRODUCTION 4

HOW TO
CHANGE HEADS 5

HOW TO
USE EPILATOR 5-8

HOW TO
USE SHAVER 9

CLEANING 10 - 11

MAINTENANCE 11

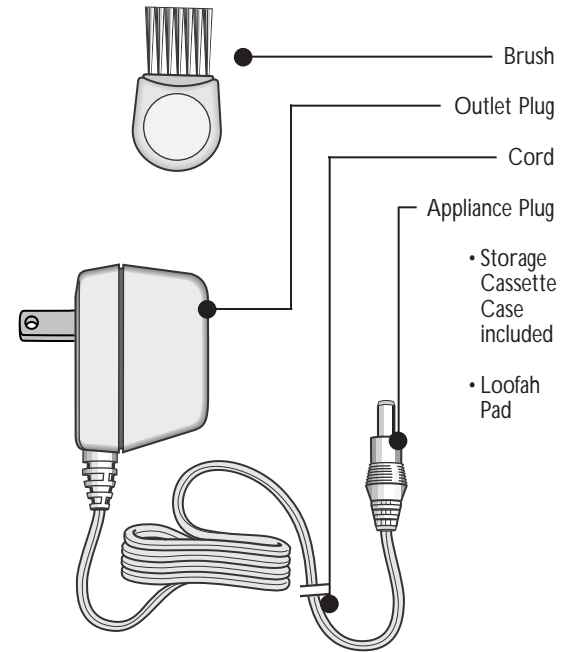
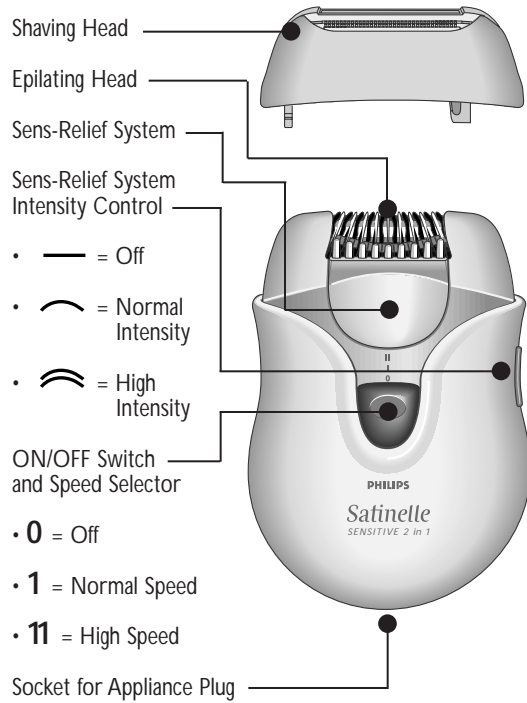
ASSISTANCE 11

ACCESSORIES 11

SPANISH INSTRUCTIONS

WARRANTY Back Cover

FEATURES

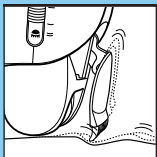


INTRODUCTION

- Congratulations! Your new Satinelle Sensitive 2 in 1 Hair Removal System can remove unwanted hairs quickly, easily and effectively. The epilating head is especially suitable for the legs and with the interchangeable shaving head, you can comfortably shave your underarms and bikini line.

The combination of the rotating disc system and the newly designed Sens-Relief System is a revolution in epilation. The Satinelle Sensitive 2 in 1 makes epilating more comfortable.

Even the shortest hairs are removed at the root by the quick rotating discs. Any regrowth of hairs tends to be softer - no more stubble. Your legs will stay silky smooth and hair-free for weeks.

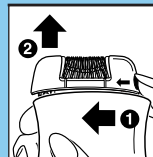


- While you are epilating, the vibrating Sens-Relief System relaxes your skin, like a massage, masking the feel of epilation while removing hair at the root.
-
- To acquaint yourself with how the Satinelle Sensitive 2 in 1 Epilator/Shaving System works, be certain to read the instructions and important information contained in this booklet before using for the first time. Satinelle Sensitive 2 in 1 Epilator/Shaving System with the unique Sens-Relief System ... the choice for smooth, silky results that last for weeks!

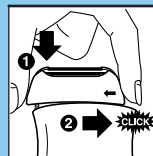
HOW TO CHANGE HEADS

- **Putting On/Removing the Epilating Head and Shaving Head**

- 1 Make sure the appliance has been turned OFF.



- 2 Remove the epilating or shaving head by pressing the ribbed section with your thumb and sliding the epilating or shaving head off the appliance sideways, in the direction of the arrow on the back of the epilating or shaving head.



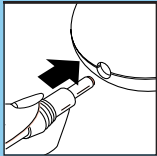
- 3 You can put the epilating or shaving head on the appliance by sliding it onto the appliance in the direction opposite to that of the arrow on the back of the shaving or epilating head. Make sure the epilating or shaving head snaps in properly.

- **Note:** The epilating or shaving head can only be mounted on the appliance one way.

HOW TO USE EPILATOR

- Make sure your skin is clean, free from grease and creams. Do not apply any cream before using. Hairs are easier to remove after a bath or shower, but your skin should be completely dry before using your Satinelle Sensitive 2 in 1 Epilator System.
- If you are using the appliance for the first time, it is recommended that you begin at an area with little hair growth to become accustomed to using your Satinelle Sensitive 2 in 1 Epilator System.
- **Only use epilating head on dry legs. Do not use on other body areas.**

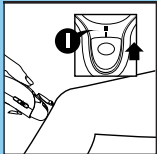
- ▶ As the hairs are being removed by the root, your skin may feel a little discomfort after using the Satinelle Sensitive 2 in 1 Epilator System for the first time. This effect will gradually lessen with each use.
- ▶ After epilation, regrowth of hairs tends to be softer both in appearance and in touch.
- ▶ After each use, you may want to apply a non-alcohol based mild cream or body lotion which will help reduce the possibility of skin irritation.



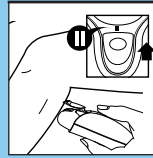
- 1 Be certain appliance is in OFF ("O") position. Connect cord to appliance, making sure that the plug is completely inserted into the appliance. Insert the plug into any 120V AC outlet.

- 2 Switch the Satinelle Sensitive 2 in 1 Epilator System ON, selecting the speed and Sens-Relief System Intensity Setting. You may decide to use different speeds and Sens-Relief System Intensity Settings for different parts of your legs.

▶ Speed Settings



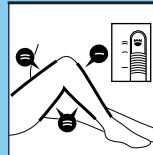
- 1 For the areas where the hairs are thinner, hard-to-reach places and areas with bones close to the skins surface (such as knees and ankles), select speed 1 (normal speed).



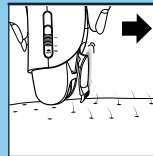
- 2 For larger surfaces and thicker hair areas, select speed II (high speed).

▶ Sens-Relief System Intensity Settings (works with Epilator Head only)

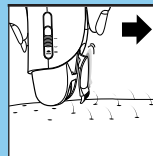
- 1 For areas with bones close to the skins surface (knees, ankles), select the normal intensity.



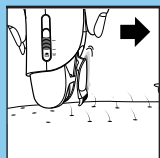
- 2 For the more fleshy areas (thighs and calves), select high intensity.



- 3 Keep the skin taut using your fingers to stretch the skin so the rotating discs can grasp hairs.

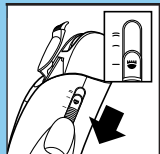


- 4 Hold the Satinelle Sensitive 2 in 1 Epilator Head perpendicular to your leg with the ON/OFF Switch facing you.

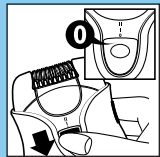


5 Gently press and move the Satinelle Sensitive 2 in 1 Epilator System slowly over the skin **against the direction of hair growth** to prevent in-grown hairs. If you press too lightly or too hard, the Satinelle Sensitive 2 in 1 Epilator System will not be able to grasp and remove the hairs.

▶ Experiment until you find the right settings and right amount of pressure for your type of skin and hair.



6 To switch the System OFF, first slide the Sens-Relief System Control to position "-", then slide the ON/OFF Switch to the "O" position.



▶ **The epilating head is for use on dry legs only.**

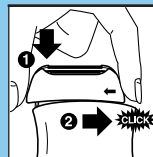
▶ **NOTE:** If you choose to use a cream or moisturizing lotion after use, be certain it does not contain alcohol as it may cause discomfort.

▶ **IMPORTANT:** After using the Satinelle Sensitive 2 in 1 Epilator System, some redness or irritation may occur. This is normal and should disappear quickly. Clean the appliance regularly following **MAINTENANCE** instructions.

HOW TO USE SHAVER

▶ Underarms and bikini line (shaving)

You may use the shaving head to shave the delicate parts of your body, such as underarms and bikini line. With the shaving head, you will obtain a smooth result in a comfortable and gentle way.

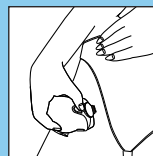


1 Attach the shaving head onto the appliance.

2 Turn the appliance ON. It is advised to select speed I.

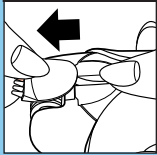


3 Place the trimmers and the foil on your skin. Move the shaving head slowly over the skin against the direction of hair growth while pressing it lightly.

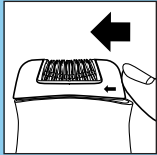


CLEANING

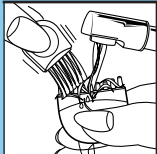
- 1** Unplug the appliance.



- 2** Remove the Sens-Relief System element and the epilating or shaving head.



- 3** Clean all accessible parts with the brush.



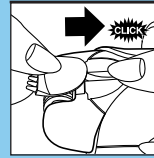
- 4** Sens-Relief System element:
Clean the rubber teeth under the tap with the brush.



- 5** Epilating head:
Clean the discs with the brush.



- 6** Shaving head:
Remove the shaving foil from the cutter block and clean the hair chamber, cutter block and foil with the brush.



- 7** Replace the epilating or shaving head, then the Sens-Relief System element back onto the appliance.

MAINTENANCE

- ▶ After use, you can store the Satinelle Sensitive 2 in 1 in the storage cassette case.
- 1** Shaving head: rub a drop of mineral oil onto both trimmers and the shaving head twice a year.

ASSISTANCE

- ▶ For assistance or the Authorized Norelco Service Location nearest you, call toll free:

1-800-243-7884

or visit our website: www.Philipsonline.com

- ▶ Authorized Norelco Service Location information is available 24 hours a day, 7 days a week.

ACCESSORIES

- ▶ If you use the appliance two or more times a week, we advise you to replace the shaving foil and the cutter block every 1 or 2 years.
- ▶ A worn-out or damaged shaving foil should only be replaced with an original Philips shaving foil (model number HP 6105).
- ▶ For replacement of the cutter block, part model number HP 2911 is available at any Authorized Norelco Service Location.

FULL TWO YEAR WARRANTY

Philips Electronics North America Corporation warrants each new Philips Product, Model HP6416 (except foil and trimmers), against defects in materials or workmanship for a period of two years from the date of purchase, and agrees to repair or replace any defective product without charge.

IMPORTANT: This warranty does not cover damage resulting from accident, misuse or abuse, lack of reasonable care, the affixing of any attachment not provided with the product or loss of parts or subjecting the product to any but the specified voltage.* Use of unauthorized replacement parts will void this warranty.

PHILIPS ELECTRONICS NORTH AMERICA CORPORATION WILL NOT PAY FOR WARRANTY SERVICE PERFORMED BY A NON-AUTHORIZED REPAIR SERVICE AND WILL NOT REIMBURSE THE CONSUMER FOR DAMAGE RESULTING FROM WARRANTY SERVICE PERFORMED BY A NON-AUTHORIZED REPAIR SERVICE. NO RESPONSIBILITY IS ASSUMED FOR ANY SPECIAL, INCIDENTAL OR CONSEQUENTIAL DAMAGES.

In order to obtain warranty service, simply take or ship the product postage prepaid to the nearest Authorized Norelco Service Location. It is suggested that for your protection you return shipments of product by insured mail, insurance prepaid. Damage occurring during shipment is not covered by this warranty.

NOTE: No other warranty, written or oral, is authorized by Philips Electronics North America Corporation. This warranty gives you specific legal rights, and you may also have other rights which vary from state to state. Some states do not allow the exclusion or limitation of incidental or consequential damages, so the above exclusion and limitations may not apply to you.

*Read enclosed instructions carefully.

Manufactured for:

Norelco Consumer Products Company
A Division of Philips Electronics North America Corporation
1010 Washington Blvd., Stamford, CT 06912-0015

MADE IN AUSTRIA.



This symbol on the product's nameplate means it is listed by Underwriters' Laboratories, Inc.

PHILIPS and Philips Shield are Registered Trademarks of Koninklijke Philips Electronics N.V.

Satinelle Sensitive 2 in 1 and Sens-Relief are Trademarks of Philips Electronics North America Corporation.

© 1999 Philips Electronics North America Corporation. All Rights Reserved.