

# PHILIPS

## SATINELLE SENSITIVE HAIR REMOVAL SYSTEM HP6414

### Instructions for Use



If you need help, answers  
or service, please call us at  
1-800-243-7884.



PHILIPS

## IMPORTANT SAFEGUARDS

When using an electric appliance, basic precautions should always be followed, including the following:

**Read all instructions before using this appliance.**

## DANGER

To reduce the risk of electric shock:

1. Do not reach for an appliance that has fallen into water. Unplug immediately.
2. Do not use while bathing or in a shower.
3. Do not place or store appliance where it can fall or be pulled into a tub or sink. Do not place in or drop into water or other liquid.
4. Always unplug this appliance from the electrical outlet immediately after using.
5. Unplug this appliance before cleaning.

## WARNING

To reduce the risk of burns, fire, electric shock, or injury to persons:

1. This appliance should never be used by, on, or near children or the disabled. Keep out of reach of children.
2. Use this appliance for its intended household use as described in this manual. Do not use attachments not recommended by Philips Electronics North America Corporation.
3. Never operate this appliance if it has a damaged cord or plug, if it is not working properly, if it has been dropped or damaged, or dropped into water. Return the appliance to an Authorized Norelco Service Location for examination and repair.
4. Keep the cord away from heated surfaces.

5. Never drop or insert any object into any opening.
6. Do not use outdoors.
7. Do not operate where aerosol (spray) products are being used or where oxygen is being administered.
8. **Always check rotating discs before use. Do not use this hair removal system with damaged or broken discs, as injury may occur.**
9. Always attach plug to appliance first, then to outlet. Be certain that plug is inserted firmly into appliance. To disconnect, slide switch to OFF position, then remove plug from outlet.
10. To prevent possible damage to the cord, do not wrap cord around the appliance.
11. An appliance should never be left unattended when plugged in.
12. When appliance is on, keep it away from the hair on your head, eyelashes, eyebrows, clothing, brushes, wires and cords to prevent accidents, injury or damage.
13. **This appliance is for dry use on legs only. Do not use on other body areas.**
14. If you have varicose veins, spots, moles or blemishes, or your skin is sensitive or irritated, or you have in-grown hairs or the tendency towards producing in-grown hairs, do not use this appliance.

## SAVE THESE INSTRUCTIONS

## IMPORTANT

Please read these instructions completely before using this appliance. The following information and precautions are important:

- **CAUTION:** Methods of removing hair by the root can cause ingrown hairs and minor skin injuries. Please consult your doctor if you have any questions about the use of the appliance.
- Do not use the Satinelle Sensitive System if you suffer from varicose veins, spots or blemishes, or when the skin is irritated. Consult your doctor first.
- Use of the Satinelle Sensitive System may cause reddening or irritation of the skin. This is a normal reaction which should quickly disappear. However, if irritation remains for more than three days, consult your doctor.
- **Any minor injury resulting from hair removal may allow bacteria to penetrate the injury site potentially causing small scars or a change in pigmentation of the skin. The risk of infection may be minimized by thoroughly cleaning the rotating discs before and/or after each use (see Maintenance section).**
- This appliance should only be used after prior consultation with your doctor if you have or experience:
  - Open wounds
  - Eczema, psoriasis (scaly eczema), inflamed skin reactions such as folliculitis, skin rashes or the tendency to allergy or allergic skin reactions
  - Body acne
  - Immune deficiency or disorders
  - Couperose, rosacea, or varicose veins
  - Pregnancy
  - Reduced skin immunity as a result of diabetes, pregnancy, Raynaudis disease, etc.
  - Hemophilia
  - If you have moles, raised skin bumps, etc.
- If you have been or begin taking hormone medication, or have recently been pregnant, a

## Product Assistance

change in your hormone levels may influence the thickness, color or amount of hair growth. This is caused by the hormonal changes, not by this method of hair removal.

- **When removing hair from the area behind knees, be sure to keep skin stretched tightly to prevent pinching of the skin by the rotating discs.**
- With first time use you may feel some discomfort, irritation or experience reddening of the skin. This is because the hairs are actually removed at the root. The discomfort you feel will tend to lessen with successive uses. You may wish to remove hair in the evening so if any reddening occurs it will diminish overnight.
- Use only the cord provided.
- Clean appliance regularly following **MAINTENANCE** instructions.

For Assistance or the Authorized Norelco Service Location nearest you, call toll free:

**1-800-243-7884**

Authorized Service Location information is available 24 hours a day, 7 days a week.

## CONGRATULATIONS

Your new Satinelle Sensitive Hair Removal System can remove hair by the root quickly, easily and effectively. The fast, efficient rotating disc system catches even short hairs, while the exclusive vibrating Sens-Relief System relaxes your skin like a massage while hairs are being removed. The Satinelle Sensitive System has two different speed selections and two different Sens-Relief intensity settings which can be combined as desired for maximum personal comfort to give you long-lasting, silky, smooth results ... only from Philips.

# PHILIPS

## 60 - DAY MONEY-BACK GUARANTEE

If you are not fully satisfied with your Philips Satinelle Product, Philips will refund you the full purchase price.

The Satinelle product must be shipped prepaid by insured mail, insurance prepaid, and have the sales receipt, indicating purchase price and the date of purchase, enclosed. The Satinelle product must be postmarked no later than 60 days after the date of purchase. Philips reserves the right to verify the purchase price of the product and limit refunds not to exceed suggested retail price.

Send dated sales receipt, your complete name and address as indicated below, and the product, prepaid to:

Norelco Consumer Products Company  
A Division of  
Philips Electronics North America Corporation  
P.O. Box 1116  
Skokie, IL 60076

Please allow 4-6 weeks for delivery of check. (Please Print)

Name \_\_\_\_\_

Address \_\_\_\_\_

City \_\_\_\_\_

State \_\_\_\_\_ Zip \_\_\_\_\_

Telephone No. (\_\_\_\_\_) \_\_\_\_\_

AREA CODE

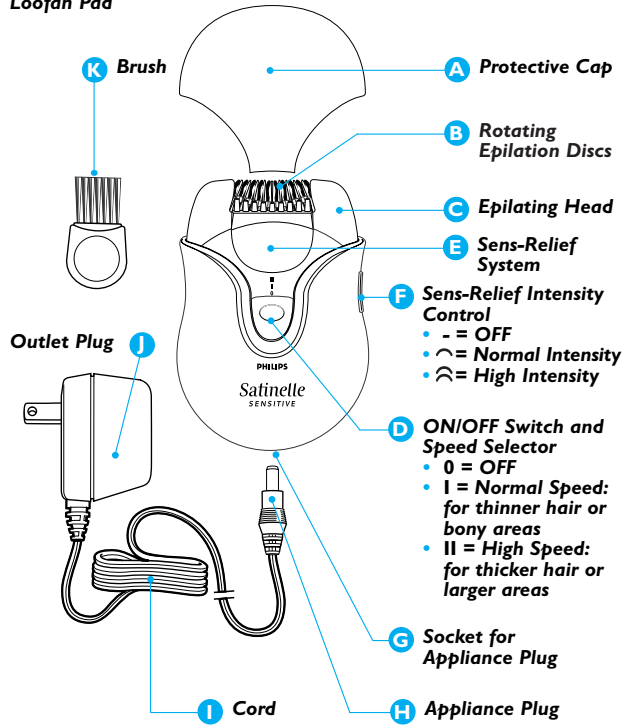
REASON FOR RETURNING \_\_\_\_\_

\_\_\_\_\_

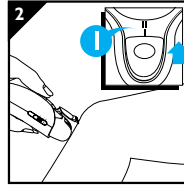
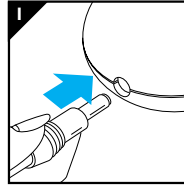
\_\_\_\_\_

## Features

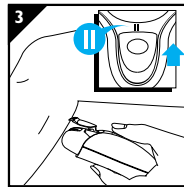
### Travel Pouch Loofah Pad



## Important



## How To Use Your Satinelle System



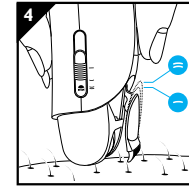
Give your new Satinelle Sensitive Hair Removal System a chance!

Like many new products, your Philips Satinelle Sensitive System may take a little getting used to. If you are using a hair removal system for the first time, or if you've been using a different brand, your skin may need time to adapt to your new Satinelle Sensitive System. Give yourself a little time to practice and determine the best comfort settings and speed to remove hairs quickly, yet comfortably. The rotating discs grip even short hairs and remove them at the root. Any regrowth of hairs tends to be softer - no more stubble! Your legs will remain smooth for weeks.

To acquaint yourself with how the Satinelle Sensitive System works, be certain to read the instructions and important information contained in this booklet before using for the first time.

Satinelle Sensitive Hair Removal System with the unique Sens-Relief System ... the choice for long-lasting, smooth, silky results.

- Make sure your skin is clean, free from grease and creams. Do not apply any cream before using. Hairs are easier to remove after a bath or a shower, but your skin should be completely dry before using your Satinelle Sensitive System.
- If you are using the appliance for the first time, it is recommended that you begin at an area with little hair growth to become accustomed to using your Satinelle Sensitive System.
- As the hairs are being removed by the root, your skin may feel a little discomfort after using the Satinelle Sensitive System for the first time. This effect will gradually lessen with each use.
- Regrowth of hairs tends to be softer both in appearance and in touch.
- After each use, you may want to apply a non-

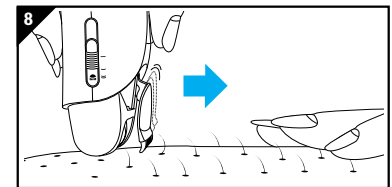
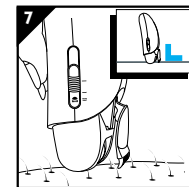
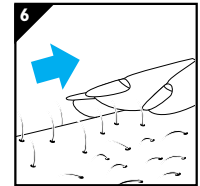
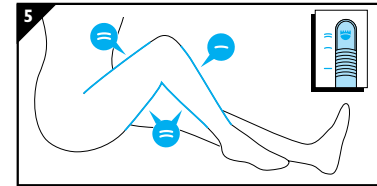


alcohol based mild cream or body lotion which will help reduce the possibility of skin irritation.

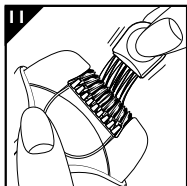
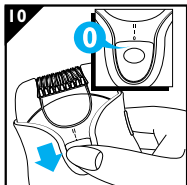
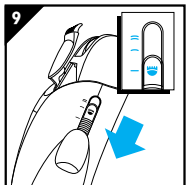
1. Be certain appliance is in OFF "O" position. Connect cord to appliance, making sure that the plug is completely inserted into the appliance (Fig. 1). Insert the plug into any 120V AC outlet.
2. Remove Protective Head Cap.
3. Switch the Satinelle Sensitive Hair Removal System ON, selecting the speed and Sens-Relief intensity setting. You may decide to use different speed and different Sens-Relief intensity settings for different parts of your legs.

## Speed Settings

- For the areas where the hairs are thinner, hard-to-reach places and areas with bones close to the skin's surface (such as knees and ankles), select speed I (normal speed) (Fig. 2).
- For larger surfaces and thicker hair areas, select speed II (high speed) (Fig. 3).



## Sens-Relief System Intensity Settings



- For areas with bones close to the skin's surface (knees, ankles), select the normal intensity.
  - For the more fleshy areas (thighs and calves), select extra intensity (Fig. 4 and Fig. 5).
4. Keep the skin taut using your fingers to stretch the skin so the rotating discs can grasp hairs (Fig. 6).
  5. Hold the Satinelle Sensitive System perpendicular to your leg with the ON/OFF Switch facing you (Fig. 7).
  6. Gently press and move the Satinelle System slowly over the skin against the direction of hair growth (Fig. 8). If you press too lightly or too hard, the Satinelle Sensitive System will not be able to grasp and remove the hairs. Experiment until you find the right settings and right amount of pressure for your type of skin and hair.

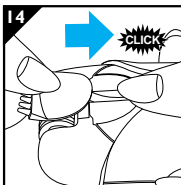
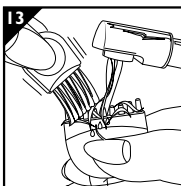
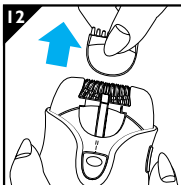
7. To switch the System OFF, first slide the Sens-Relief Control to position “-” (Fig. 9), then slide the ON/OFF Switch to the “O” position (Fig. 10).

**NOTE:** If you choose to use a cream or moisturizing lotion after use, be certain it does not contain alcohol as it may cause discomfort.

### IMPORTANT:

- After using the Satinelle Sensitive System, some redness or irritation may occur. This is normal and should disappear quickly.
- This appliance is for dry use on legs only.
- Clean the appliance regularly following **MAINTENANCE** instructions.

## Maintenance Instructions



### IMPORTANT

- Always switch the Satinelle Sensitive System to OFF position “O” and remove plug from electrical outlet before cleaning (Fig. 10).
  - **It is essential for hygienic reasons and optimum performance that the epilating head and rotating discs are cleaned after each use.**
  - Never immerse this appliance in water; however, the Sens-Relief element can be removed and washed or rinsed clean. The Sens-Relief element must be air dried thoroughly before replacing it on the Satinelle Sensitive System.
  - Never clean, remove, or replace epilating head or rotating discs while motor is ON. The rotating discs are not removable from the appliance.
  - Do not apply pressure or touch rotating discs with hard objects as this may dent or damage the discs. If damage occurs, discontinue use immediately.
  - Do not use strong or abrasive cleaners or acetone to clean the housing/body of Satinelle Sensitive System.
1. Brush the rotating discs clean (Fig. 11).
  2. Remove Sens-Relief element (Fig. 12).
  3. Wash the rubber tips of the Sens-Relief element using the brush (Fig. 13).
  4. Air dry the Sens-Relief element thoroughly and then replace it on Satinelle Sensitive System (Fig. 14).
- All servicing should be performed by an Authorized Norelco Service Location only.

### FULL TWO YEAR WARRANTY

Philips Electronics North America Corporation warrants each new Philips Product, Model HP6414, against defects in materials or workmanship for a period of two years from the date of purchase, and agrees to repair or replace any defective product without charge.

**IMPORTANT:** This warranty does not cover damage resulting from accident, misuse or abuse, lack of reasonable care, the affixing of any attachment not provided with the product or loss of parts or subjecting the product to any but the specified voltage.\*

**PHILIPS ELECTRONICS NORTH AMERICA CORPORATION WILL NOT PAY FOR WARRANTY SERVICE PERFORMED BY A NON-AUTHORIZED REPAIR SERVICE AND WILL NOT REIMBURSE THE CONSUMER FOR DAMAGE RESULTING FROM WARRANTY SERVICE PERFORMED BY A NON-AUTHORIZED REPAIR SERVICE.**

**NO RESPONSIBILITY IS ASSUMED FOR ANY SPECIAL, INCIDENTAL OR CONSEQUENTIAL DAMAGES.**

In order to obtain warranty service, simply take or ship the product postage prepaid to the nearest Authorized Norelco Service Location. It is suggested that for your protection you return shipments of product by insured mail, insurance prepaid. Damage occurring during shipment is not covered by this warranty.

**NOTE:** No other warranty, written or oral, is authorized by Philips Electronics North America Corporation.

This warranty gives you specific legal rights, and you may also have other rights which vary from state to state. Some states do not allow the exclusion or limitation of incidental or consequential damages, so the above exclusion and limitations may not apply to you.

\* Read enclosed instructions carefully.

Manufactured for:

Norelco Consumer Products Company

A Division of Philips Electronics North America Corporation

1010 Washington Blvd., Stamford, CT 06912-0015

### MADE IN AUSTRIA.



This symbol on the product's nameplate means it is listed by Underwriters' Laboratories, Inc.

PHILIPS and Philips Shield are Registered Trademarks of Philips Electronics N.V.

Satinelle Sensitive and Sens-Relief are Trademarks of Philips Electronics North America Corporation.

© 1998 Philips Electronics North America Corporation. All Rights Reserved.

Rev. I 8/98

4203 000 44721