

PHILIPS

Wet and Dry electric shaver

SatinShave Essential

for legs

Single foil shaver

Battery operated



HP6342/00



Safe and easy shaving

With this all-round shaver you can shave your whole body quickly, easily and safely. The secret is the small shaving head that cuts quickly while protecting your skin. A soft and smooth feeling after every use!



Safe shaving

- Safe shaving system for ultimate skin protection

Effortless control

- Profiled, ergonomic grip

Easy to use

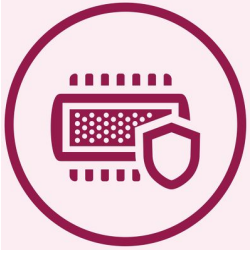
- Battery operated
- Wet & dry for use in bath or shower



asimpleswitch.com

Highlights

Safe shaving system



The gentle small shaving head protects your skin leaving it smooth and soft

Slim ergonomic design



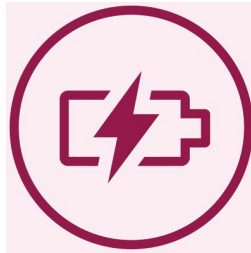
For comfortable handling

Wet & dry use



For a gentle and comfortable use during your shower or bath routine with anti slip grip for optimal wet & dry use.

Battery operated



Shave anywhere with this cordless lady shaver.

Specifications

Accessories

- 2 x AA batteries
- Cleaning brush
- Travel cap
- Efficiency cap
- Luxury pouch
- Small shaving head
- Trimming comb

Ease of use

- Cordless
- Handle: Ergonomic
- Wet and dry use

Performance

Shaving head: Single foil shaver

Technical specifications

- Number of shaving foils: 1
- Voltage: 2x 1.5 V



asimpleswitch.com

Philips Green Logo

Philips Green Products can reduce costs, energy consumption and CO2 emissions. How? They offer a significant environmental improvement in one or more of the Philips Green Focal Areas – Energy efficiency, Packaging, Hazardous substances, Weight, Recycling and disposal and Lifetime reliability.