

PHILIPS

Wet and Dry lady
shaver

SatinShave
Essential

for legs

Single-foil shaver

Battery operated



HP6341/02



Safe and easy shaving

With this all-round lady shaver you can shave your whole body quickly, easily and safely. The secret is the small shaving head, which cuts quickly while protecting your skin. A soft and smooth feeling after every use!

Safe shaving

- Safe shaving system for ultimate skin protection

Effortless control

- Profiled, ergonomic grip

Easy to use

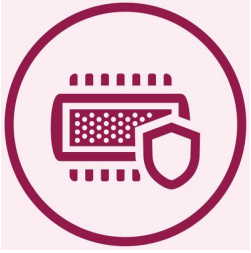
- Battery operated
- Wet and dry for use in bath or shower



asimpleswitch.com

Highlights

Safe shaving system



The gentle small shaving head protects your skin, leaving it smooth and soft

Slim ergonomic design



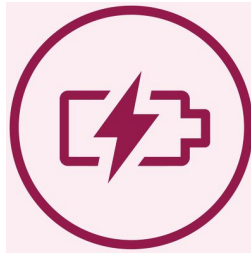
For comfortable handling

Wet and dry use



For a gentle and comfortable use during your shower or bath routine with anti-slip grip for optimal wet and dry use.

Battery operated



Shave anywhere with this cordless lady shaver.

Specifications

Accessories

2 x AA batteries
Cleaning brush
Travel cap
Small shaving head
Trimming Comb

Ease of use

Cordless
Handle: Ergonomic
Wet and dry use

Performance

Shaving head: Single-foil shaver

Technical specifications

Number of shaving foils: 1
Voltage: 2 x 1.5 V



asimpleswitch.com

Philips Green Logo

Philips Green Products can reduce costs, energy consumption and CO2 emissions. How? They offer a significant environmental improvement in one or more of the Philips Green Focal Areas — Energy efficiency, Packaging, Hazardous substances, Weight, Recycling and disposal and Lifetime reliability.