

**Introduction**

Congratulations on your purchase and welcome to Philips! To fully benefit from the support that Philips offers, register your product at [www.philips.com/welcome](http://www.philips.com/welcome).

The SalonControl Ion Shine from TRESemmé and Philips has been specially designed to meet all your personal drying and styling needs, giving you beautiful hair in the shortest time. Next to the separate airflow and temperature settings, this hairdryer offers additional versatility with the turbo airflow and the cool shot, to create a beautiful shiny hairstyle just the way you like.

**General description (Fig. 1)**

- A** Air outlet grille
- B** Cool shot button
- C** Turbo button for extra airflow
- D** Airflow slide switch
  - O = Off
  - I = Gentle airflow especially intended for styling
  - II = Strong airflow for quick drying
- E** Temperature slide switch
  - ☉ Hot setting
  - ☽ Warm setting
  - ● Cool setting
- F** Ion slide switch
- G** Hanging loop
- H** Removable air inlet grille
- I** Ion indicator light
- J** Concentrator



**Important**

Read this user manual carefully before you use the appliance and save it for future reference.

**Danger**

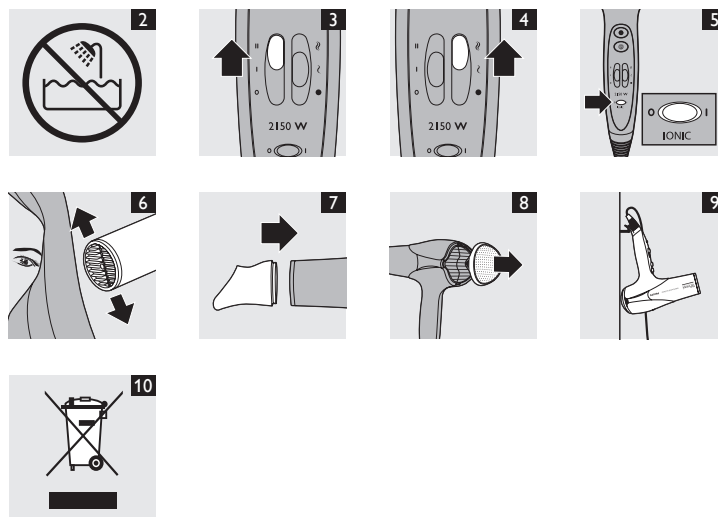
- Keep the appliance away from water. Do not use it near or over water contained in baths, washbasins, sinks etc. When you use the appliance in a bathroom, unplug it after use. The proximity of water presents a risk, even when the appliance is switched off (Fig. 2).
- Do not insert any objects into the appliance to avoid electric shock.

**Warning**

- Check if the voltage indicated on the appliance corresponds to the local mains voltage before you connect the appliance.
- Check the condition of the mains cord regularly. Do not use the appliance if the plug, the cord or the appliance itself is damaged.
- If the mains cord is damaged, you must have it replaced by Philips, a service centre authorised by Philips or similarly qualified persons in order to avoid a hazard.
- This appliance is not intended for use by persons (including children) with reduced physical, sensory or mental capabilities, or lack of experience and knowledge, unless they have been given supervision or instruction concerning use of the appliance by a person responsible for their safety.
- Children should be supervised to ensure that they do not play with the appliance.

**Caution**

- For additional protection, we advise you to install a residual current device (RCD) in the electrical circuit that supplies the bathroom. This RCD must have a rated residual operating current not higher than 30mA. Ask your installer for advice.
- Never block the air grilles.
- The appliance has a safety function. If the appliance overheats, it switches off automatically. Unplug the appliance and let it cool down for a few minutes. Before you switch the appliance back on, check the grilles to make sure they are not blocked by fluff, hair, etc.
- Always switch off the appliance before you put it down, even if it is only for a moment.
- Always unplug the appliance after use.
- Do not wind the mains cord round the appliance.
- You may notice a characteristic odour when you use this hairdryer. This odour is caused by the ions that are generated and is not harmful to the human body.
- Do not use the appliance on artificial hair.
- Do not use the appliance for any other purpose than described in this manual.
- Never use any accessories or parts from other manufacturers or that are not specifically advised by Philips. If you use such accessories or parts, your guarantee becomes invalid.



**Electromagnetic fields (EMF)**

This Philips appliance complies with all standards regarding electromagnetic fields (EMF). If handled properly and according to the instructions in this user manual, the appliance is safe to use based on scientific evidence available today.

**Using the appliance**

**Drying**

- 1** Put the plug in the wall socket.
- 2** Select the desired airflow setting to switch on the appliance (Fig. 3).
  - Set the slide switch to airflow setting II for ultra-quick drying.
  - Set the slide switch to airflow setting I for drying short hair or styling your hair.

*Tip: You can also use the turbo button for an extra powerful airflow.*
- 3** Set the temperature slide switch to the cool, warm or hot setting (Fig. 4).
  - The hot setting ☉ allows you to dry shower-wet hair very quickly and safely until it is damp.
  - The warm setting ☽ is especially suitable for drying damp hair until it is almost dry.
  - The cool setting ● allows you to gently dry hair that is almost dry and helps to seal in shine.
- 4** Switch the ion function on or off with the ion slide switch (Fig. 5).
  - ▶ The ion indicator light goes on to indicate that the ion function has been activated.

The ion function provides additional shine and reduces frizz and static electricity. It is particularly suitable for dry and almost-dry hair.

- 5 Dry your hair by making brushing movements with the hairdryer at a small distance from your hair (Fig. 6).

*Tip: When you have finished drying each section, press the cold shot button and direct the cool airflow at your hair. This fixes your style and adds shine.*

### Concentrator

The concentrator enables you to direct the airflow at the brush or comb with which you style your hair.

- 1 Snap the concentrator onto the appliance (Fig. 7).

To disconnect the concentrator, pull it off the appliance.

### Cleaning

Always unplug the appliance before you clean it.

Do not immerse the appliance in water or any other liquid, nor rinse it under the tap.

- 1 Remove the concentrator from the appliance before you clean it.
- 2 Clean the appliance with a dry cloth.
- 3 Take the air inlet grille off the appliance to remove hairs and dust (Fig. 8).
  - To remove the air inlet grille, press the thumbrests on the left and the right side of the air inlet grille simultaneously and pull the air inlet grille off the appliance.
  - To reattach the air inlet grille, press the thumbrests on the left and the right side of the air inlet grille simultaneously and press the inlet grille onto the appliance.
- 4 Clean the concentrator with a moist cloth or rinse it under the tap.
- 5 Make sure the concentrator is dry before you use or store it.

### Storage

Do not wind the mains cord round the appliance.

- 1 Remove the plug from the wall socket.
- 2 Put the appliance in a safe place and let it cool down.
- 3 You can store the appliance by hanging it from its hanging loop (Fig. 9).

### Environment

- Do not throw away the appliance with the normal household waste at the end of its life, but hand it in at an official collection point for recycling. By doing this, you help to preserve the environment (Fig. 10).

### Guarantee and service

If you need service or information or if you have a problem, please visit the Philips website at [www.philips.com](http://www.philips.com) or contact the Philips Consumer Care Centre in your country (you find its phone number in the worldwide guarantee leaflet). If there is no Consumer Care Centre in your country, go to your local Philips dealer.

### Troubleshooting

If problems arise with your hairdryer and you are unable to solve them with the information below, contact the nearest Philips service centre or the Philips Consumer Care Centre in your country.

Problem	Solution
The appliance does not work at all.	Perhaps the socket to which the appliance is connected is not live. Make sure the socket is live.
	The appliance may have overheated and switched itself off. Unplug the appliance and let it cool down for a few minutes. Before you switch the appliance back on, check the grilles to make sure they are not blocked by fluff, hair, etc.
	The appliance may not be suitable for the voltage to which it has been connected. Make sure that the voltage indicated on the type plate of the appliance corresponds to the local mains voltage.
	The mains cord of the appliance may be damaged. If the mains cord is damaged, you must have it replaced by Philips, a service centre authorised by Philips or similarly qualified persons in order to avoid a hazard.

TRESemmé.  
USED BY PROFESSIONALS

HP4982/17



**PHILIPS**



[www.philips.com](http://www.philips.com)

100% recycled paper  
100% papier recyclé

4222.002.7203.1