

PHILIPS

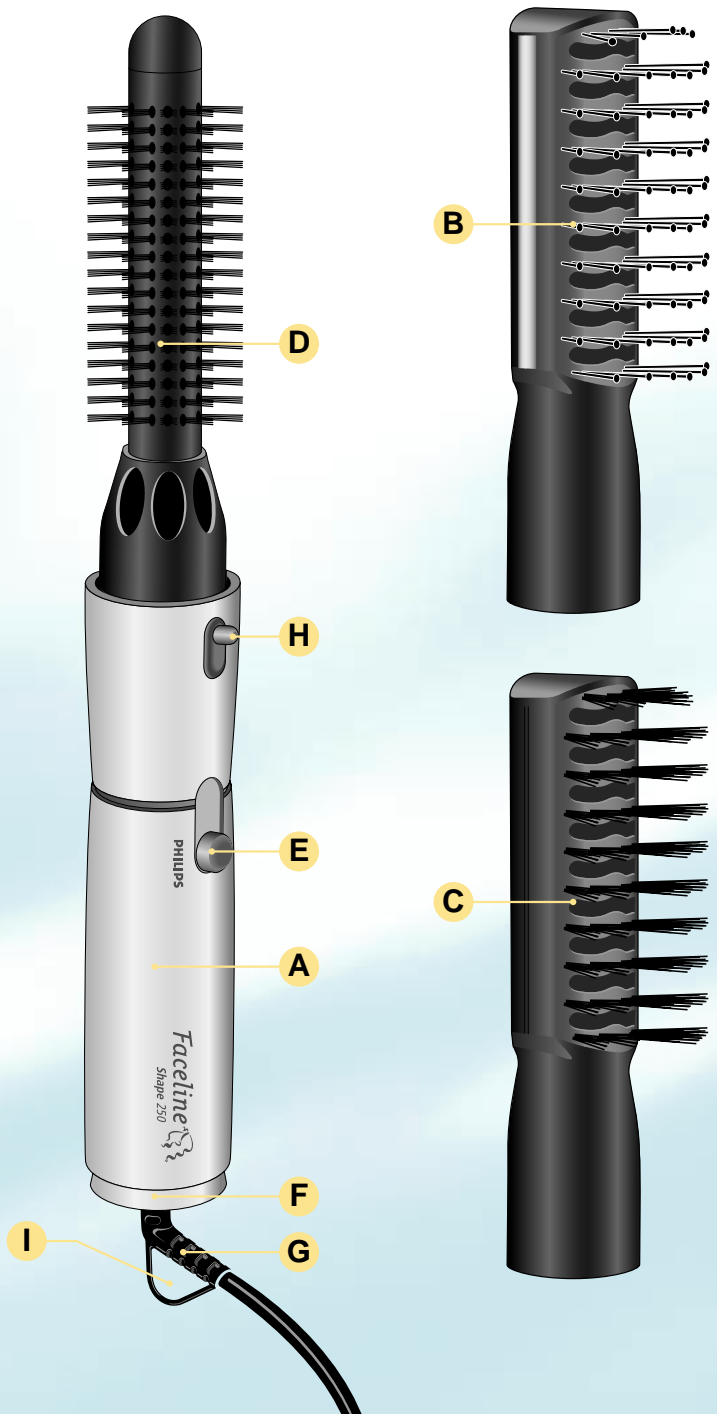
HP 4631



faceline shape



PHILIPS



English

Your new Philips Profile Shape has been specially designed to give beautiful styling results. It is quick and easy to use. We hope you will enjoy using your Profile Shape - the hairstyler with which you can create almost any desired hairdo.

In order to get the best results, please read the instructions carefully before use. Also refer to the illustrations on fold-out pages.

Important



- Before connecting the appliance, check that the voltage indicated on the type plate corresponds to the local mains voltage.
- Do not use this product near water in e.g. baths, washbasins, sinks.
If the product falls into water, unplug it immediately and dispose of it. It must not be used again.
- Always ensure that the attachments are completely dry (on the inside as well as the outside!) before affixing them to the styler.
- Always switch the appliance off before putting it down, even if it is only for a moment.
- For additional protection, the installation of a residual current device (RCD) with a rated residual operating current not exceeding 30 mA is advisable in the electric circuit supplying the bathroom. Ask your electrician for advice.
- Even when the appliance is switched off, the electricity has not been cut off. Always pull out the mains plug when the appliance is not being used.
- Never obstruct the air inlet grille.
- This product is equipped with an automatic overheating protection device. If the appliance overheats, it will switch off. Unplug the appliance. After cooling down for a few minutes, the appliance can be used again. @Before switching back on again#, check the air inlet grille for possible blockage by fluff, hair, etc. If in doubt, consult your dealer or an Authorised Philips Service Centre.
- Check the condition of the mains cord regularly. Do not wind the mains cord around the appliance.
- The mains cord of this appliance cannot be replaced. If the cord is damaged, the appliance should be discarded.
- For examination or repairs always return the appliance to an Authorised Philips Service Centre. Unqualified repair work can be dangerous for the user.

General description (fig. 1)

A Hairstyler

B Shape Style brush

C Shape Bristle brush

D Mixed Bristle brush

E Switch

0 = Off

I = Gentle warm air flow for easy styling

II = Stronger and warmer air flow for fast styling and drying

F Air inlet grille

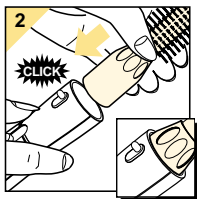
G Swivel cord

H Release button for detaching attachments

I Hanging loop

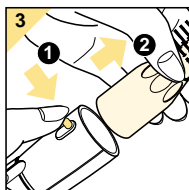
To affix an attachment:

- Align the attachment with the styler, making sure the arrows on the attachment are in line with the arrows on the styler. Press to fit (fig. 2).



To remove an attachment:

- While pressing the release button, pull the attachment in the direction of the arrow (fig. 3).



How to use

- Remember, a good haircut is the basis for a good hairstyle.
- The Profile Shape is most effective when the hair is slightly damp. After washing, dry your hair in the normal way until it is damp. Then begin using your styler. When the hair is dry, slightly dampen it with water.
- Before styling, brush or comb your hair to ensure that it is untangled.
- Prevent the hair from becoming too dry. Overdrying may result in frizzy hair ends which are hard to style.

- The results you can obtain with the Profile Shape depend upon various factors, for example the thickness, length and structure of your hair. Experimenting with the attachments will allow you to discover the styling possibilities for your particular hair type and will help you determine how to achieve the best results.
- When using the Mixed Bristle Brush, make sure it does not get tangled in your hair. Don't rotate the brush for more than 1.5 turns. Keep the brush away from the head when you remove it from the hair to avoid picking up any underlaying hair.
- You can remove the attachment from the hair as soon as the hair feels dry. The time needed to dry the hair depends on the thickness of the hair and the amount of hair being styled.
- Use position II (maximum position) when you start styling. When the hair gets dryer, you can switch back to position I.
- Always switch the appliance off before removing and/or affixing the attachments.

Attachments

• Shape Style Brush

The Shape Style Brush is suitable for straight and wavy hair of any length, especially for medium to long hair. Its special design with vented hollow center ensures that the warm air is directed directly into your hairdo. The bobble-tipped pins provide good grip on the hair. The heated metal plate on the back of the brush ensures optimum styling and "volume". For a longer lasting result you can apply some mousse before styling your hair.

Volume

- Insert the Shape Style Brush into the hair. Brush against the direction of the hair growth, touching the scalp with the brush. Then rotate the attachment away from the head (fig. 4). The hair will be lifted and fall lightly back onto the head. In this manner you add maximum volume and body to the hair.

- If the hair is still damp you can hold the Shape Style Brush still for a moment, before you rotate it away from the head to remove it.
- You can also add volume to long hair by holding your head down and brushing the hair with the Shape Styler in this position.

Shaping and Styling

Making waves in medium to long hair

- Switch on the appliance. Take the ends of the hair (fig. 5) and wind the brush around the tress in the desired direction (fig. 6). The resulting shape of the wave depends on the thickness of the lock.
- As soon as the hair is warm to the touch, remove the hot air brush from the hair by rotating it away from the head.
- Leave the curls or waves to cool down, before finishing by combing, brushing or fingercombing the hair into its final style (fig. 7).

- **Mixed Bristle Brush**

Making curls in medium to long hair

- Divide the hair into tresses (fig. 8), using a comb. Do not take too much hair in one tress. The resulting shape of the waves or curls depends on the thickness of the lock and the tightness of winding the hair around the brush. For waves take larger locks and wind them loose around the brush.
- Switch on the appliance. Wind the hair around the brush in the desired direction (fig. 9). When using the Mixed Bristle Brush, make sure it does not get tangled in the hair. Therefore, do not rotate it in the hair more than 1,5 turn. Ensure that the hair is wound up so that it is at right angles to the scalp (fig. 10). This will give your hair optimum lift and volume. As soon as the hair is warm to the touch, remove the brush from the hair.
- Leave the curls or waves to cool down, before finishing by combing, brushing or fingercombing the hair into its final style (fig. 11).

To remove the brush from the hair

- Carefully rotate the styler in the opposite direction, just far enough to release the hair without spoiling the curl. Be careful not to pick up underlying hairs because this could cause the brush to get stuck in the hair.

- **Shape Bristle Brush**

The Shape Bristle Brush is suitable for finishing and shaping medium to long hair. It will be easy to tame and control permed, natural curly or wavy hair. The Shape Bristle Brush is especially designed to get the hair with maximum grip in natural free flowing effects. Because the air circulates directly and freely through both the brush and the hair it will offer grooming, shaping and conditioning in a controlled process.

Grooming

- To groom and condition the hair and have a straight finish, lift the hair at the roots on the sides of your head, and follow down the hair lengths with the styler (fig. 12). This technique will tame stray ends and help promote shine and softness.

Shaping

- To shape the hair into free flowing effects, switch your brush position and direction during combing; the hair will gain waves and strokes (fig. 13).

Cleaning

The brushes can be cleaned with a small brush or a dry cloth.

Storage

The appliance can be hung from the hanging loop (fig. 14).

