

Micro jukebox

HDD1420
 HDD1430
 HDD1620
 HDD1630
 HDD1635
 HDD1820

Quick start guide

EN	Quick start guide	1	DA	Hurtig start	57
FR	Guide de démarrage rapide	8	SU	Nopea aloitus	64
DE	Kurzanleitung	15	CS	Rychlý přehled	71
ES	Guía de inicio rápido	22	HU	Gyors áttekintés	78
NL	Handleiding voor snel gebruik	29	PL	Krótką instrukcja obsługi	85
IT	Guida di riferimento rapido	36	SL	Rýchly prehľad	92
PO	Início rápido	43	RU	Быстрый запуск	99
SV	Snabbguide	50	EL	Γρήγορη έναρξη	106



GoGear

PHILIPS

Need help?

Besoin d'aide ?

Benötigen Sie Hilfe ?

Necesita ayuda inmediata ?

1

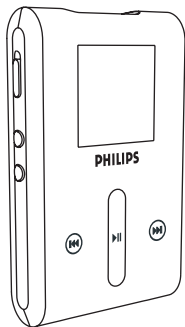
Visit/Consulter/Besuche/Visite

www.philips.com/support

2 Contact Philips : / Contacter Philips : / Kontakt zu Philips: / Contactar Philips:

Country	Helpdesk:	Tariff / min:	Keep ready:
Österreich	0820 901115	€0.20	Das Kaufdatum, Modellnummer und Seriennummer
Belgique	070 253 010	€ 0.17	La date d'achat la référence et le numéro de série du produit
Canada	1-800-661-6162 (Francophone) 1-888-744-5477 (English / Spanish)	Free	Date of Purchase, Model number and Serial number
Danmark	3525 8761	Local tariff	Forbrugeren's indkøbsdato, type/model-og serienummer
Suomi	09 2290 1908	Paikallinen hinta	Ostopäivä ja tarikka mallinnumero ja sarjanumero
France	08 9165 0006	€ 0.23	La date d'achat la référence et le numéro de série du produit
Deutschland	0180 5 007 532	€ 0.12	Das Kaufdatum, Modellnummer und Serial number
Ελληνικά	0 0800 3122 1223	δωρε-ν	Την ημερομηνία αγοράς και Τον ακριβή κωδικό μοντέλου και Τον αριθμό σειράς του προϊόντος σας
Ireland	01 601 1161	Local tariff	Date of Purchase, Model number and Serial number
Italia	199 404 042	€ 0.25	La data di acquisto, numero di modello e numero di serie
Luxembourg	26 84 30 00	Local tariff	La date d'achat, la référence et le numéro de série du produit
Nederland	0900 0400 063	€ 0.20	De datum van aankoop, modelnummer en serienummer
Norge	2270 8250	Local tariff	Datoen da du kjøpte produktet & modellnummer & serienummeret
Portugal	2 1359 1440	Local tariff	A data de compra, número do modelo e número de série
Españal	902 888 785	€ 0.15	Fecha de compra e número del modelo e número de serie
Sweden	08 632 0016	Local tariff	Inköpsdatum, modellnummer och serienummer
Schweiz	02 2310 2116	Local tariff	Das Kaufdatum und Modellnummer und Seriennummer
UK	0906 1010 017	£0.15	Date of Purchase, Model number and Serial number
USA	1-888-744-5477	Free	Date of Purchase, Model number and Serial number

What's in the box



Digital Audio Player



Headphones
(provided with
3 different sizes
of rubber caps)



Combined charger /
USB cable



Protective pouch



CD-ROM with Windows Media
Player, Philips Device Manager,
Philips Device Plug-in, User
manuals, Tutorials and Frequently
Asked Questions



Quick start guide

What else you'll need



Power outlet

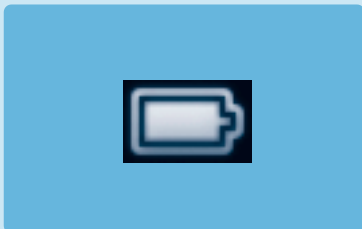
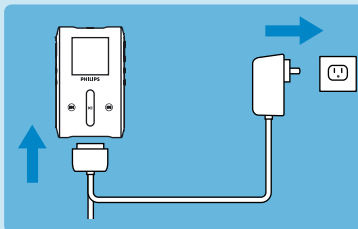


Computer

Computer with:

Windows® XP (SP1 or above)
Pentium Class 300 MHz processor or higher
128 MB RAM
500 MB hard disk space
USB port
Internet connection
Microsoft Internet Explorer 6.0 or later

1 Connect



1. Connect the supplied multi-voltage adaptor/charger to your player by plugging it into the DC-In connector at the bottom of the player and then plug the other end into a standard AC outlet.
2. The battery will be fully charged in 4 hours when charging it for the first time, and 70% charged in 1 hour for quick charge.
3. The player is fully charged when the charging animation stops and the above icon is displayed.

2 Install

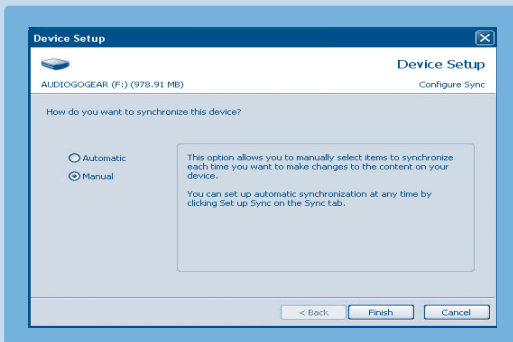
1. Insert the CD supplied with your product into the CD ROM drive of your PC.
2. If the installation program does not start automatically, browse the CD contents via **Windows Explorer** and run the program by double clicking on the file ending with **.exe**.
3. Follow the onscreen instructions to complete the installation of **Windows Media Player** (including necessary plug-ins) and **Philips Device Manager**.
4. You may need to restart your PC after software installation.

Transfer

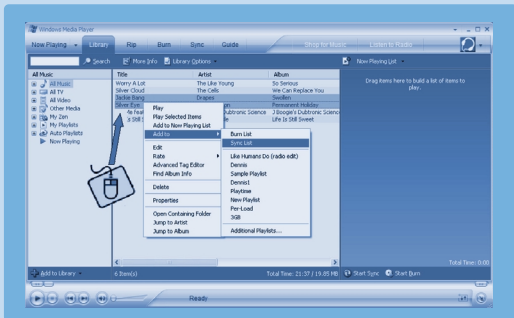
Make sure that you have installed the Philips Device Plug-in from the bypacked CD. Without installation of Philips Device Plug-in, your pictures will not be transferred to your player.

1. Connect the player to your computer.
2. Start **Windows Media Player**.
3. If you see this screen, choose **Manual**. (You can also do an automatic synchronisation. Refer to the user manual on the CD for instructions)

4. Select **Sync** tab. In the pull down menu on the right pane, select **Philips** or **Philips GoGear** as the destination. If they are not in the list, click **F5** to refresh and try again.

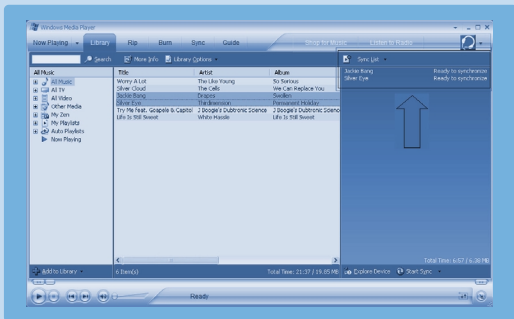


5. Select **Library** tab to access media library. Click to highlight a song/ picture you want to copy. Right click on the item and select **Add to > Sync List**.



6. Or drag and drop the song / picture into the **Sync List** on the right pane. Click the **Start Sync** button to start synchronisation. The progress will be displayed.

7. When the transfer is finished, you can disconnect your player from the computer.

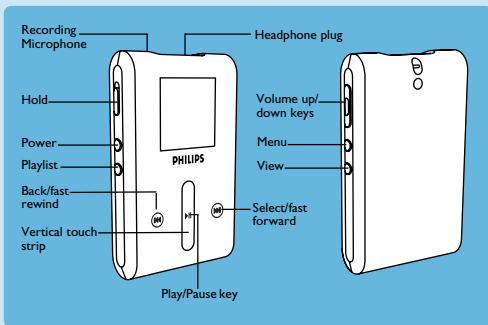


For more information and tips on transferring music and pictures with **Windows Media Player**, please refer to the user manual on the supplied CD.

3 Enjoy

Power on and play

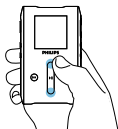
1. To power on, press **POWER** button for 3 seconds until the player resumes to its last state or the PHILIPS screen appears.
2. Use the **VERTICAL TOUCH STRIP** to scroll through the main menu
3. Select **Music**, **Pictures**, **Recordings** or **Settings** by pressing **▶▶**.
4. Use the **VERTICAL TOUCH STRIP** and **◀◀** and **▶▶** buttons to navigate.
5. Once you have found a song or recording you'd like to play, press **▶▶**.



Using the vertical touch strip

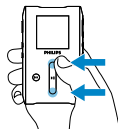
Your player has touch sensitive controls that respond to the touch of your fingers. The **VERTICAL TOUCH STRIP** (see picture) is used to scroll through lists. It responds to the following finger movements:

Tap



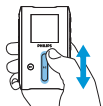
Move up or down step by step

Hold



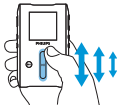
Scroll through a list at increasing speed (SuperScroll)

Stroke



Scroll through list

Swipe



List will scroll quickly like a wheel
(Fly wheel) and then slow down gradually

Tap in the middle




To stop list from spinning

	To	Do this
General	Power ON / OFF	Push and hold down ON/OFF HOLD slider to ON/OFF position for 3 seconds
	Scroll through list	Use the VERTICAL TOUCH STRIP
	Select	Press ►
	Go back	Press ◀
	Access options menu	Press MENU
	Go back to the library to browse	Press ◀
Music	Play/Pause music	Press ►
	Go to next track	Press ►►
	Go to previous track	Press ◀◀
	Add track to Playlist on the go	Select or play a track, press MENU and select Add to Playlist on the go
	Delete track	Delete track from your player through Windows Media Player. Connect your player to the computer. Select the songs that you would like to delete from your player in the items on device pane. Press Delete key on your computer keyboard.
Pictures	Start a slide show	Press MENU , select Start slide show and press ►
	Stop a slide show	Press ◀

Trouble shooting

How do I reset my player?

In the unlikely event that your player hangs, do not panic. Simply press and hold  **POWER** and **VOLUME +** buttons at the same time until the player shuts down.

How do I repair my device?

In case of a device error, connect your player to the computer and use **Philips Device Manager** to restore your player.

1. Launch **Philips Device Manager** from **Start > Programs > Philips Device Manager**.
2. Select your device.
3. Select **Repair** tab.
4. Click **Repair**.
5. After the repair process is completed, click **OK** and disconnect your player.
6. Player displays **Updating firmware**.
7. The player is ready for use again after restart.

Need help?

User Manual

Refer to the User Manual on the CD.

Online help

www.philips.com/support

Register your product

We strongly recommend that you register your product in order to gain access to free upgrades. To register your product, please log on to www.philips.com/register so that we can inform you as soon as new updates become available.



Be responsible
Respect copyrights

Specifications are subject to change without notice.
Trademarks are the property of Koninklijke Philips Electronics N.V.
or their respective owners

2005 © Koninklijke Philips Electronics N.V. All rights reserved.

www.philips.com

8240 410 04112



Printed in China