

**PHILIPS**

**PerfectCare  
Aqua Pro**

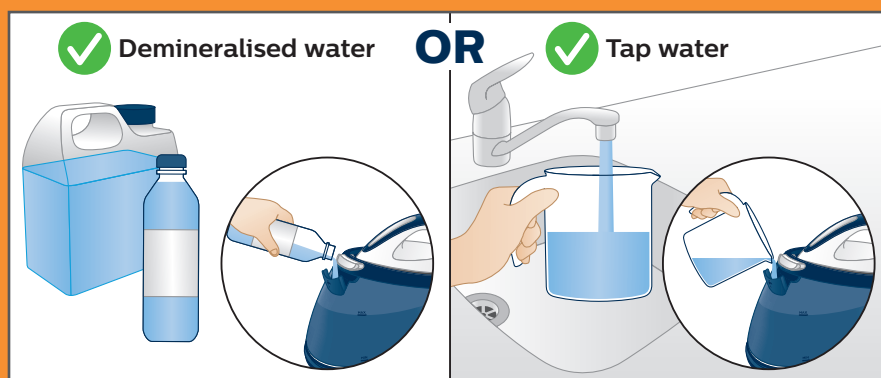
# Important information



**Read and  
keep me**

To enjoy the most out of your new steam generator, please read carefully.  
**For further information on usage and troubleshooting, please read the user manual.**

## 1. Usage of right water type



**Recommended to use:**  
Demineralised water if you  
live in hard water area

**OR** Tap water

**DO NOT USE:**  
Perfumed water, vinegar,  
descaling agents, ironing  
aids etc.

## 2. Steam control

Steam will enhance your ironing performance.  
Control the steam while ironing by using the steam trigger.



Press and hold the steam trigger  
for steam during ironing.



### Any questions?

Philips is here to help. Contact us directly.

 0207 949 0240

 015245443

 1300 363 391

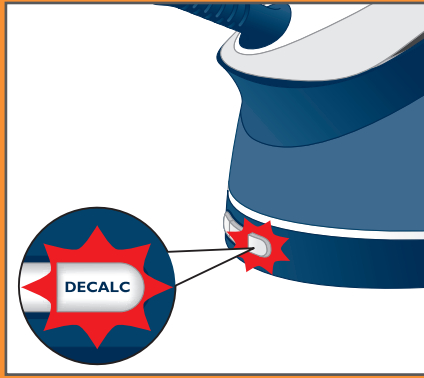
 0800 658 224

[www.philips.com/support](http://www.philips.com/support)

Please  
turn over for  
descaling



### 3. Light reminder for descaling



Perform descaling once the **EASY DE-CALC** light starts to flash.

**!** Performing the descaling procedure regularly helps to prolong the lifetime of the appliance and optimise the ironing performance.

### 4. Performing Descaling

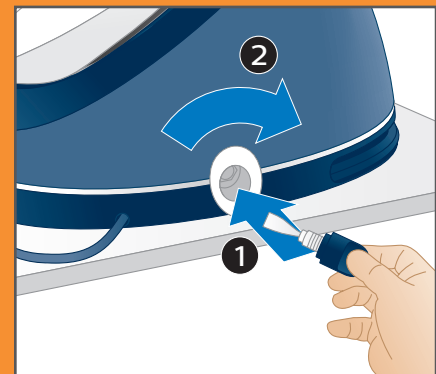
**!** To avoid the risk of burns, unplug the appliance and let it cool down for at least two hours before you perform the descaling procedure.



Place the steam generator at the edge of a table or sink and hold a cup under the EASY DE-CALC knob.



Remove the EASY DE-CALC knob and let the water with scale particles flow into the cup.



When no more water comes out, reinsert the EASY DE-CALC knob and turn it clockwise to tighten it.

