

**PHILIPS**

PerfectCare Aqua

# Important information

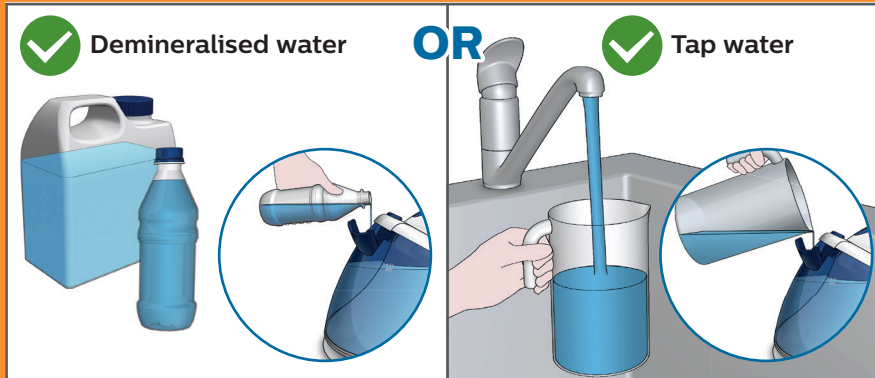


Read and keep me

To enjoy the most out of your new steam generator, please read carefully.

**For further information on usage and troubleshooting, please read the user manual.**

## 1. Usage of right water type



**DO NOT USE:**  
Perfumed water, vinegar, descaling agents, ironing aids etc.

**Recommended to use:**  
Demineralised water if you live in hard water area **OR** Tap water

## 2. Steam control

Steam will enhance your ironing performance.  
Control the steam while ironing by using the steam trigger.



Press and hold the steam trigger for steam during ironing.



### Any questions?

Don't go back to store, Philips is here to help. Contact us directly.

 0207 949 0240

 015245443

[www.philips.com/support](http://www.philips.com/support)

Please turn over for descaling



### 3. Light reminder for descaling



Perform descaling once the **EASY DE-CALC** light starts to flash.

**!** Performing the descaling procedure regularly helps to prolong the lifetime of the appliance and optimise the ironing performance.

### 4. Performing Descaling

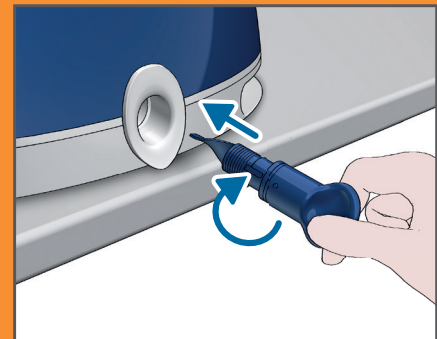
**!** Ensure that the steam generator has cooled down before performing the descaling procedure.



Place the steam generator at the edge of a table or sink and hold a cup under the EASY DE-CALC knob.



Remove the EASY DE-CALC knob and let the water with scale particles flow into the cup.



When no more water comes out, reinsert the EASY DE-CALC knob and turn it clockwise to tighten it.

