

PHILIPS

Steam iron

1900 series

Steam 22g/min;80g steam boost

Ceramic soleplate

Anti-calc

1450 Watts

GC1980



Faster – from start to finish

Super fast water filling and emptying

There's so much more to life than household chores, so you want to get them done as quickly as possible. With its super fast filling and emptying hole, pointed tip, and smooth-gliding soleplate, this quality iron is simply built for speed.

Easily removes creases

- Vertical steam for crease removal in hanging fabrics
- Steam boost to remove stubborn creases easily
- Continuous steam up to 22 g/min for better crease removal

Easy gliding on all fabrics

- Golden American Heritage soleplate

Longer lifetime

- Double Active Calc System prevents scale build-up

Faster set-up and storage

- Easy and super fast filling of the watertank
- Easy and super fast emptying of the watertank

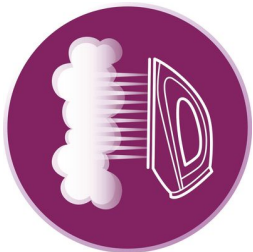
Highlights

Double Active Calc System



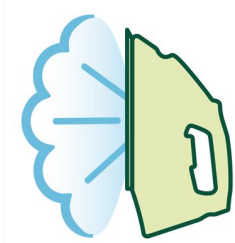
Double Active Calc system of your Philips steam iron prevents scale build-up through anti scale pills and an easy to use calc clean function.

Vertical steam



This Philips iron has a vertical steam function, for crease removal in hanging fabrics.

Steam boost



Steam boost to remove stubborn creases easily.

Easy and super fast emptying



Easy and super fast emptying of the watertank thanks to the huge emptying hole, and the sideways opening door.

Easy and super fast filling



Easy and super fast filling of the watertank thanks to the huge filling hole, and the sideways opening door of the Philips iron.

Golden American Heritage



Golden American Heritage soleplate for easy gliding on all fabrics

Up to 22 g/min of steam



Continuous steam up to 22 g/min for better crease removal.

Specifications

Fast & powerful crease removal

Soleplate: Golden American Heritage

Steam output

Continuous steam output: 22 g/min

Steam boost: 80 g

Vertical steaming

Variable steam settings

Spray

Steam tip

Power: 1750 W

Easy to use

Water tank capacity: 180 ml

Filling and emptying water: Sideways opening door, Extra large filling hole

Power cord length: 1.8 m

Cord freedom (swivel): 180 degree cord freedom

Calc management

Suitable for tap water

Calc clean solution: Double active calc clean

Technical specifications

Weight of iron: 1.06 kg

Product dimensions: 26.1 x 11.5 x 13.6 cm

Voltage: 240 V

Frequency: 50 Hz

