



FWM70




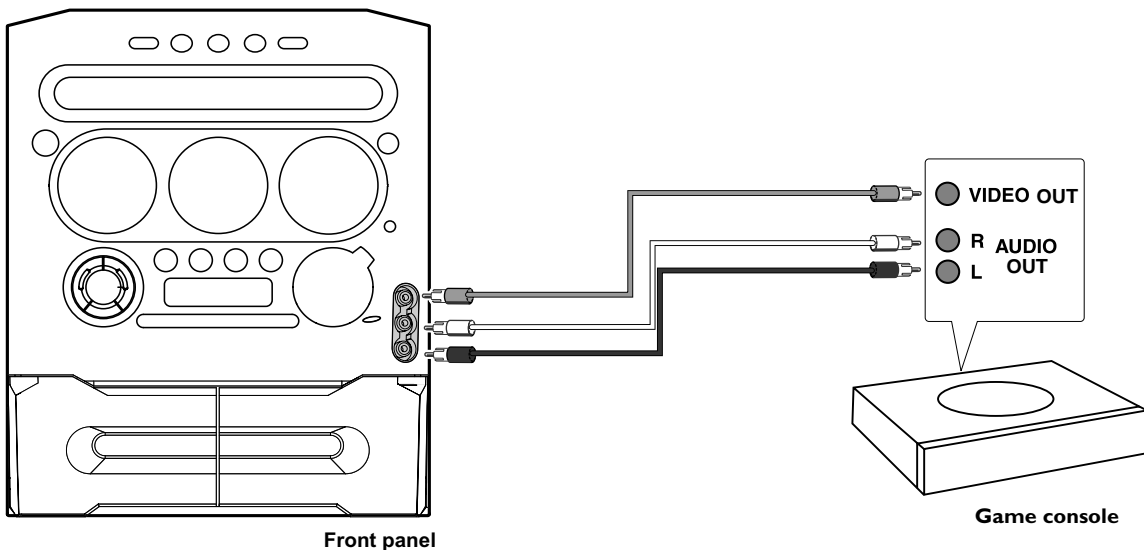
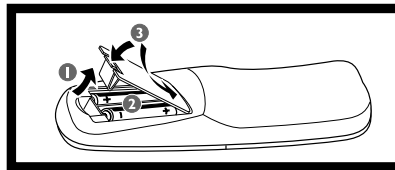
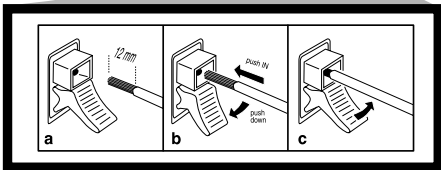
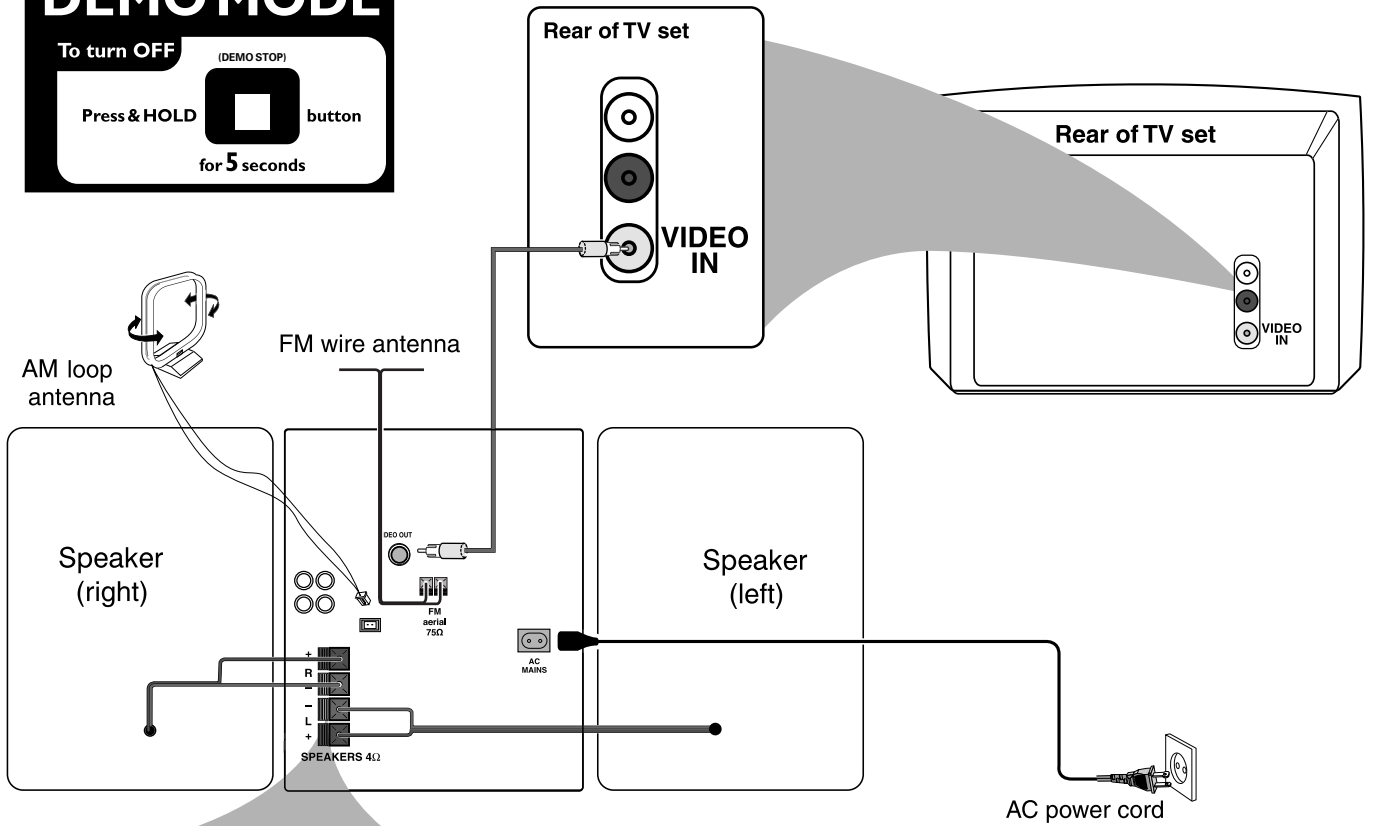
PHILIPS

Use this simple and quick guide to get started listening to your favorite music.

**DEMO MODE**

To turn OFF (DEMO STOP)

Press & HOLD  button for 5 seconds

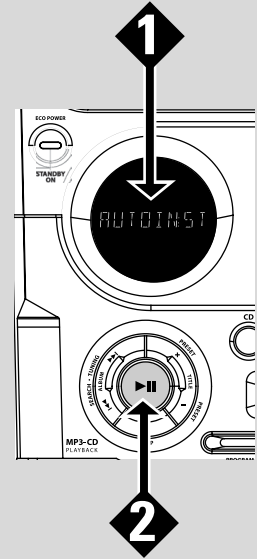


**For more detailed instructions, see the following pages in the User Guide.**

|                               |       |
|-------------------------------|-------|
| Gameport Operations .....     | 15    |
| Basic Operations .....        | 16~17 |
| Disc Operations .....         | 18~20 |
| Tuner Operations .....        | 21    |
| Tape Operations/Recording ... | 22~23 |
| Timer Operations .....        | 24~25 |
| Troubleshooting .....         | 27    |

## A Plug and Play

- 1** When you turn on the mains supply, "AUTO INSTALL - PRESS PLAY" is displayed.
- 2** Press **▶ ||** on the system to start installation.
  - "INSTALL" is displayed, followed by "TUNER" and "AUTO".
  - **PROG** starts flashing.
  - When all the available radio stations are stored or the memory for 40 presets are used, the last preset radio station (or the first available RDS station) will be played.

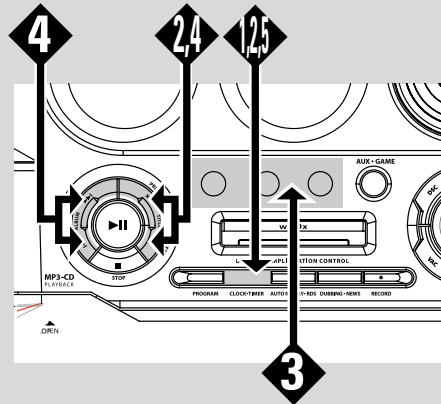


## B Timer Operations

- 1** Press and hold **CLK/TIMER** (or **CLOCK•TIMER** on main unit) until "SELECT CLOCK OR TIMER" is displayed.
- 2** Press **-/+** to change the display to "TIMER" and press **CLOCK•TIMER** again to confirm.
- 3** Press **CD** or **TUNER** or **TAPE** to select the wake-up source.
- 4** Press **◀◀** or **▶▶** (for hours) and **-** or **+** (for minutes) repeatedly to set the wake-up time.
- 5** Press **CLOCK•TIMER** to store the setting.

**To exit without storing the setting**

- Press **■** on the system.



## C Loading discs

- 1** Press **OPEN•CLOSE ▲** on the main unit to open the disc trays.
- 2** Load a disc with the label side facing up.
- 3** Press **OPEN•CLOSE ▲** again to close the disc tray.
- 4** Press **▶ ||** to play the CD.

