

Quick start guide

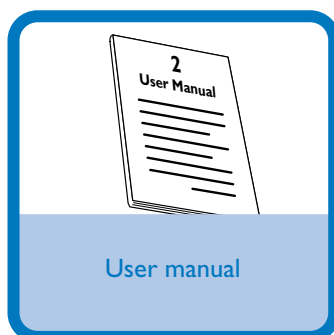
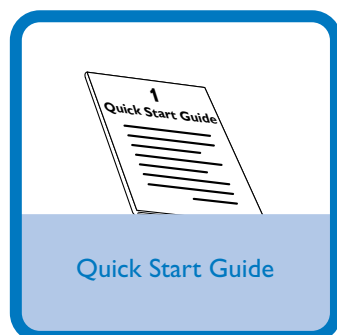
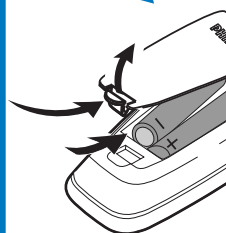
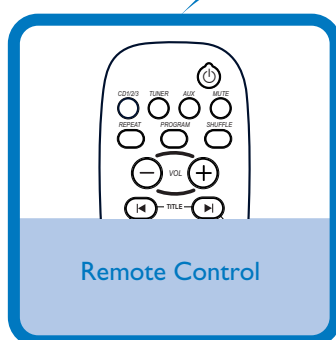
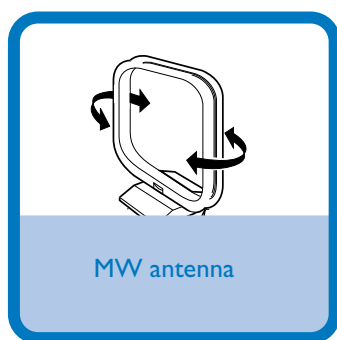
Step A *Connect*

Step B *Setup*

Step C *Enjoy*

What's in the Box?

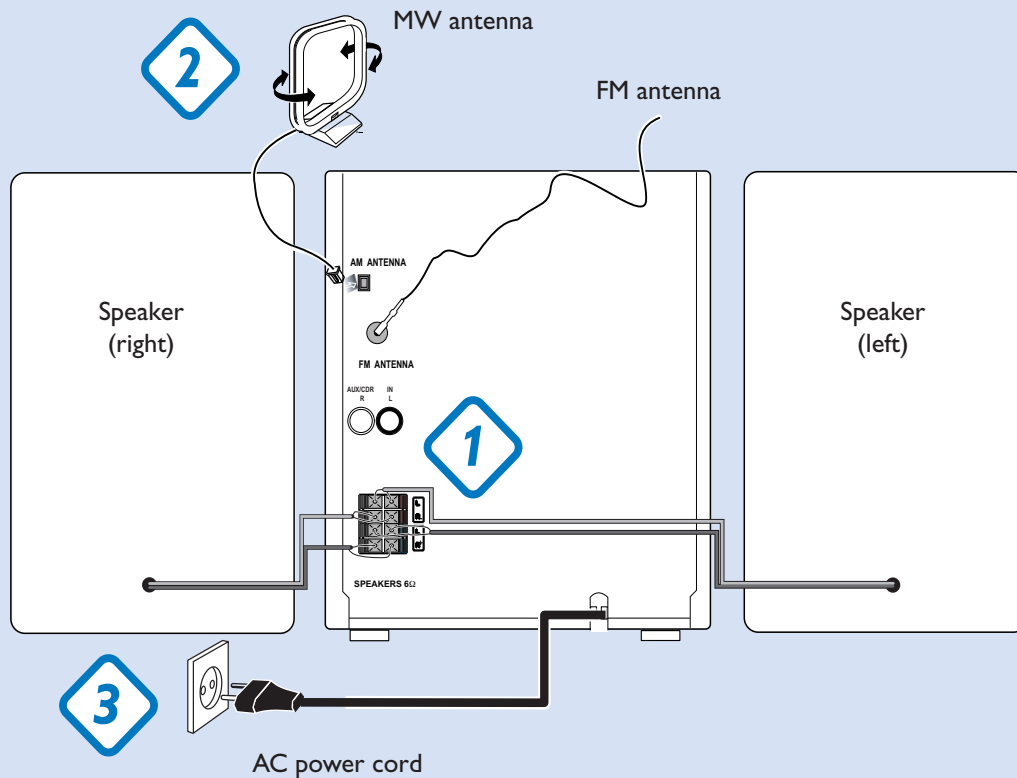
You should find these items upon opening the box.



Step A *Connect*

- 1 Connect the speaker cables.
- 2 Connect the MW antenna.
- 3 Connect the power cable of the system.

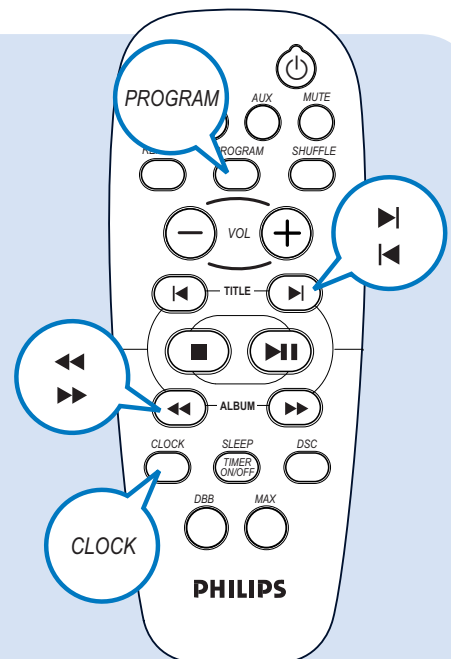
Tip
See the *User Manual* for how to connect other equipment to this system.



Step B *Setup*

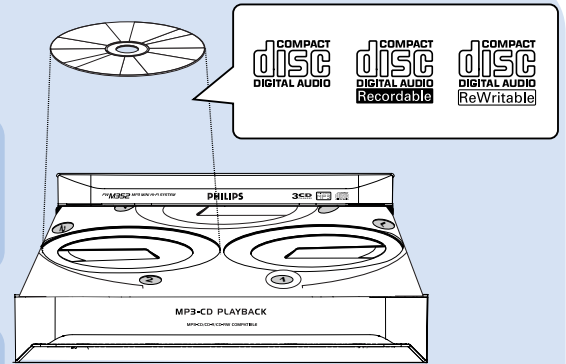
Setting the clock

- 1 In standby or view clock mode, press **CLOCK** on the remote control once. In other source mode, press **CLOCK** twice.
- 2 Press **PROGRAM** on the remote control to select clock mode. The clock can be set in either 12-hour or 24-hour mode.
- 3 Press **◀▶** repeatedly to set the hour.
- 4 Press **◀▶** repeatedly to set the minute.
- 5 Press **CLOCK** again to store the setting.



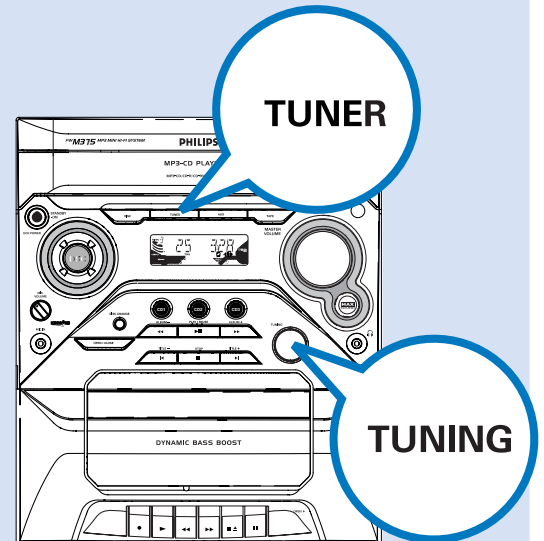
Playing a disc

- 1 Press **OPEN•CLOSE** to open the disc tray and load up to two discs on the individual disc trays. To load the third disc, press **DISC CHANGE**.
→ Make sure the label side of each loaded disc is facing up.
- 2 Press **OPEN•CLOSE** again to close the disc tray.
- 3 Use **CD 1/2/3** to select a disc for playback and then press **PLAY•PAUSE ▶ II** to start playback.
- 4 To stop playback, press **STOP ■**.



Tuning to radio stations

- 1 Press **TUNER** to select the tuner source.
- 2 Press **TUNER** again to select the desired waveband: FM or MW.
- 3 Turn the **TUNING** knob on the system until the frequency indication starts to change.



Tip

Detailed playback features and additional functions are described in the accompany owner's manual.

