

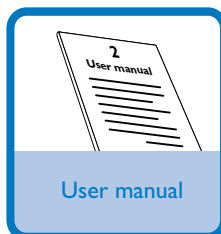
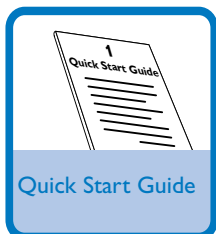
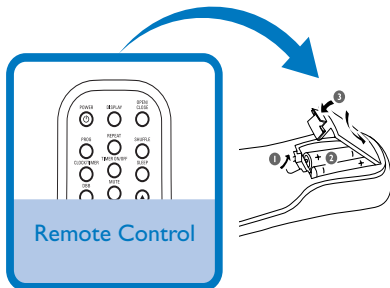
# Quick Start Guide



Step A	Setup
Step B	Enjoy

## What's in the Box?

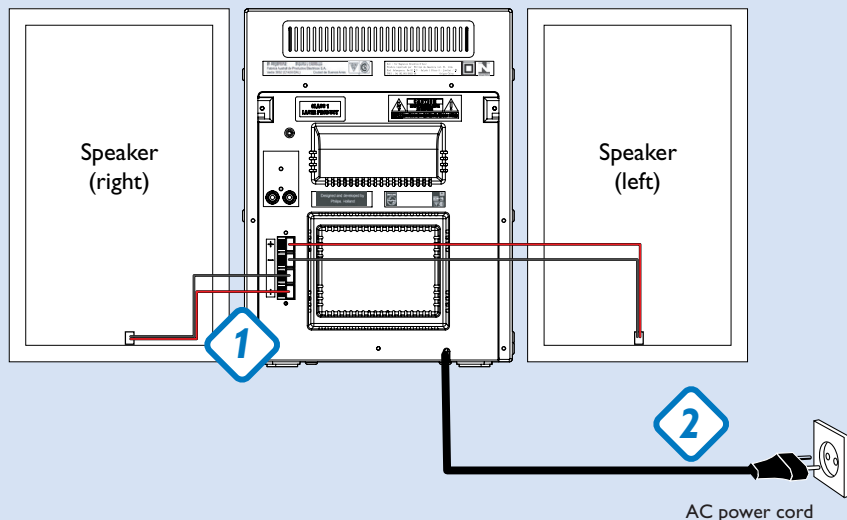
You should find these items upon opening the box.



## Connection

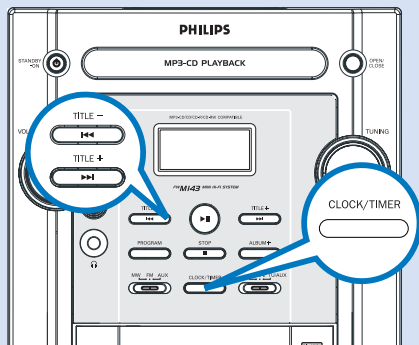
- 1 Connect the speaker wires to the **SPEAKERS** terminals.
- 2 After ensuring all the above connections have been made, connect the power cord of the system to the AC power outlet.

*Tip*  
It is unnecessary to connect the FM pigtail antenna since it is fixed to the main unit.



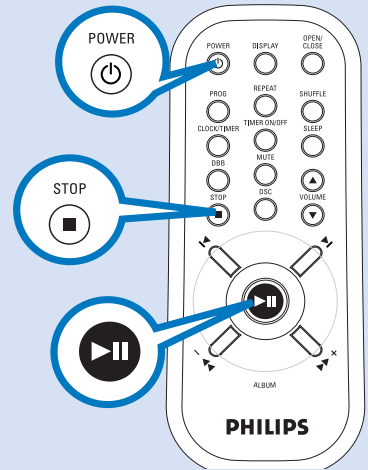
## Setting the clock

- 1 In any mode, press **CLOCK/TIMER** twice. The clock digits for the hours flash.
- 2 Press **TITLE-/+ <<< / >>>** (<< / >> on the remote) to set the hours.
- 3 Press **CLOCK/TIMER** again. The clock digits for the minutes flash.
- 4 Press **TITLE-/+ <<< / >>>** (<< / >> on the remote) to set the minutes.
- 5 Press **CLOCK/TIMER** to confirm the time.



## Playing a disc

- 1** Adjust the source selector to select CD source.
- 2** Press **OPEN/CLOSE** on the system to open the CD compartment.
- 3** Insert a disc with the printed side facing up and press **OPEN/CLOSE** to close the CD door.
- 4** Press **▶||** to start playback.
- 5** Press **STOP ■** to stop playback.



**Tip**  
*Detailed playback features and additional functions are described in the accompany user's manual.*



© Royal Philips Electronics N.V. 2007  
All rights reserved.

<http://www.philips.com>

