

Quick Start Guide

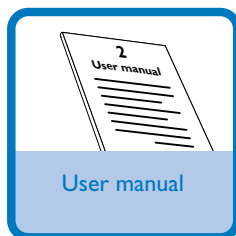
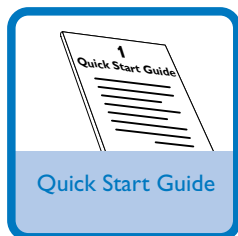
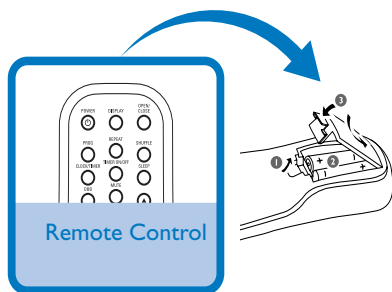


Step A	Setup
--------	-------

Step B	Enjoy
--------	-------

What's in the Box?

You should find these items upon opening the box.

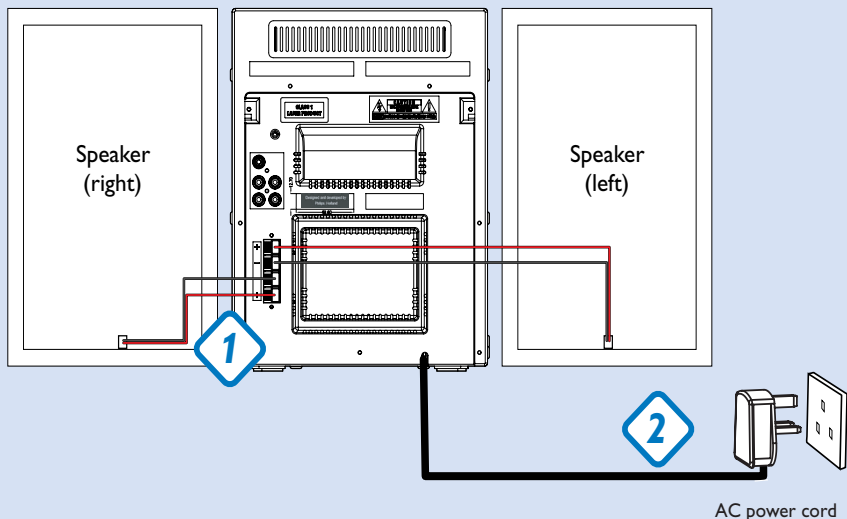


Step A Setup

Connection

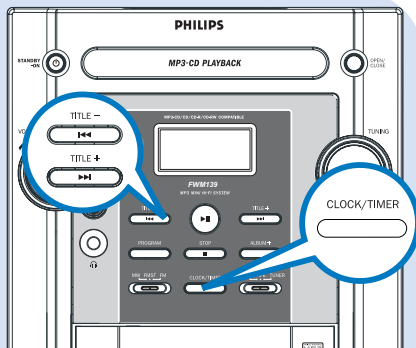
- 1 Connect the speaker wires to the **SPEAKERS** terminals.
- 2 After ensuring all the above connections have been made, connect the power cord of the system to the AC power outlet.

Tip
It is unnecessary to connect the FM pigtail antenna since it is fixed to the main unit.



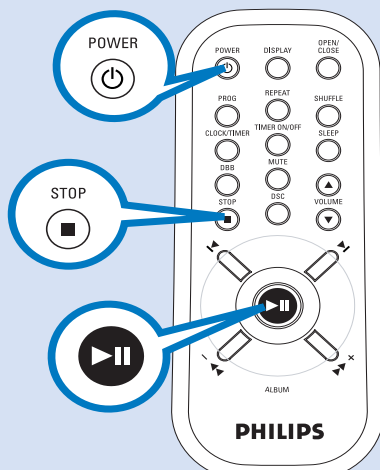
Setting the clock

- 1 In any mode, press **CLOCK/TIMER** twice. The clock digits for the hours flash.
- 2 Press **TITLE-/+ <<< / >>>** (<< / >> on the remote) to set the hours.
- 3 Press **CLOCK/TIMER** again. The clock digits for the minutes flash.
- 4 Press **TITLE-/+ <<< / >>>** (<< / >> on the remote) to set the minutes.
- 5 Press **CLOCK/TIMER** to confirm the time.



Playing a disc

- 1 Adjust the source selector to select CD source.
- 2 Press **OPEN/CLOSE** on the system to open the CD compartment.
- 3 Insert a disc with the printed side facing up and press **OPEN/CLOSE** to close the CD door.
- 4 Press **▶||** to start playback.
- 5 Press **■** to stop playback.



Tip
Detailed playback features and additional functions are described in the accompany user's manual.



2005 © Koninklijke Philips Electronics N.V.
All rights reserved.

<http://www.philips.com>

