

DVD Mini Hi-Fi System

FWD197/98



Quick start guide

1 Connect

2 Setup

3 Enjoy

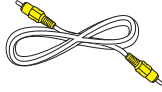
PHILIPS

EN

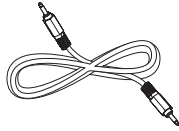
What's in the box



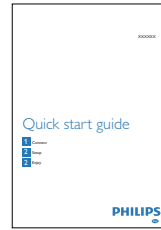
Remote control



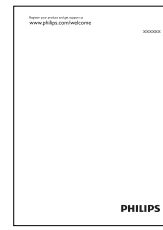
Composite video cable (yellow)



MP3 link cable



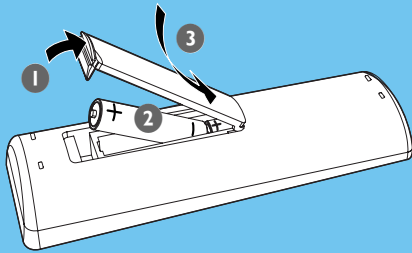
Quick start guide



User manual

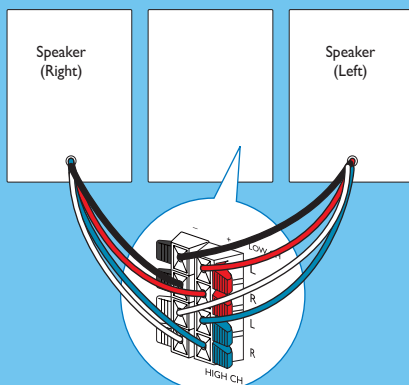
1 Connect

A Install remote control batteries



- 1 Open the battery compartment.
- 2 Insert 2 AAA batteries with correct polarity (+/-) as indicated.
- 3 Close the battery compartment.

B Connect speakers



Note

- Ensure that the colors of the speaker wires and terminals are matched.

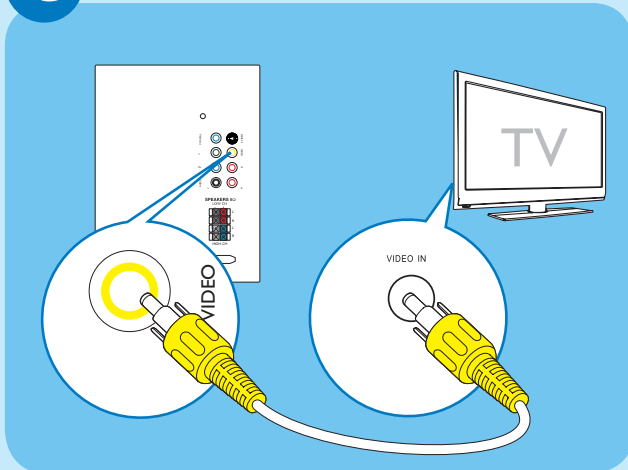
- 1 Hold down the socket flap.
- 2 Insert the stripped part of the wire completely.
 - Insert the right speaker wires to **“HIGH CH R/LOW CH R”**, left speaker wires to **“HIGH CH L/LOW CH L”**.
 - Insert the red/blue wires to **“+”**, black/grey wires to **“-”**.
- 3 Release the socket flap.

1

Connect

C

Connect TV

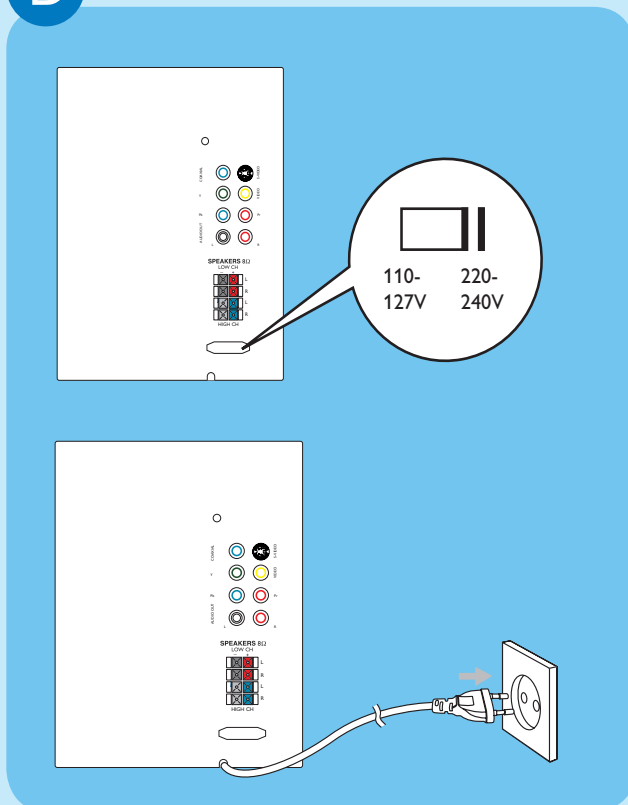


1 Connect the supplied composite video cable to:

- the **VIDEO** socket on this unit.
- the video input socket on the TV.

D

Connect power



! **Caution**

- Risk of product damage! Ensure that the power supply voltage corresponds to the voltage printed on the back or the underside of the unit.
- Risk of electric shock! When you unplug the AC power cord, always pull the plug from the socket. Never pull the cord.
- Before connecting the AC power cord, ensure you have completed all other connections.

1 Switch the voltage selector to the local power line voltage.

2 Connect the AC power cord to the wall socket.

* **Tip**

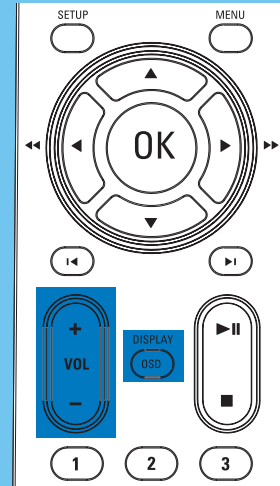
- See the User Manual for how to connect other devices to this system.

2

Setup

A Set the clock

- 1 In standby mode, press and hold **OSD/DISPLAY** on the remote control.
↳ The hour digits are displayed and begin to blink.
- 2 Press **VOL +/-** on the remote control to set the hours.
- 3 Press **OSD/DISPLAY**.
↳ The minute digits are displayed and begin to blink.
- 4 Press **VOL +/-** to set the minutes.
- 5 Press **OSD/DISPLAY** to confirm the time.



3

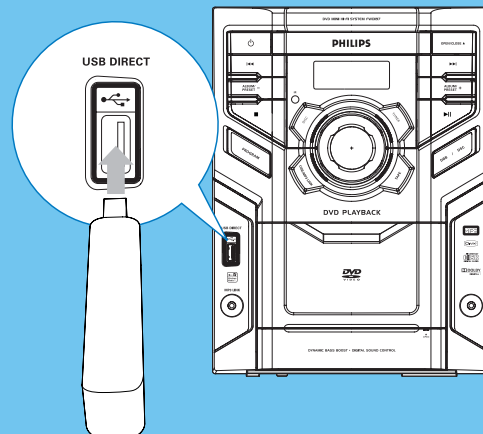
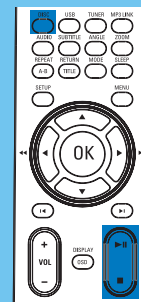
Enjoy

A Play disc

- 1 Press **DISC** to select the disc source.
- 2 Press **OPEN/CLOSE ▲** to open the disc compartment.
- 3 Insert a disc with the printed side facing up, then close the disc compartment.
↳ Play starts automatically.
 - To pause/resume play, press ►||.
 - To stop play, press ■.

B Play from USB

- 1 Insert the USB plug of a USB device into the USB socket.
- 2 Press **USB** to select the USB source.
↳ Play starts automatically.
 - To pause/resume play, press ►||.
 - To stop play, press ■.



3

Enjoy

C Program and tune to radio stations

*** Tip**

- For optimal FM reception, fully extend and adjust the position of the FM antenna.
- For optimal MW reception, adjust the position of the main unit.

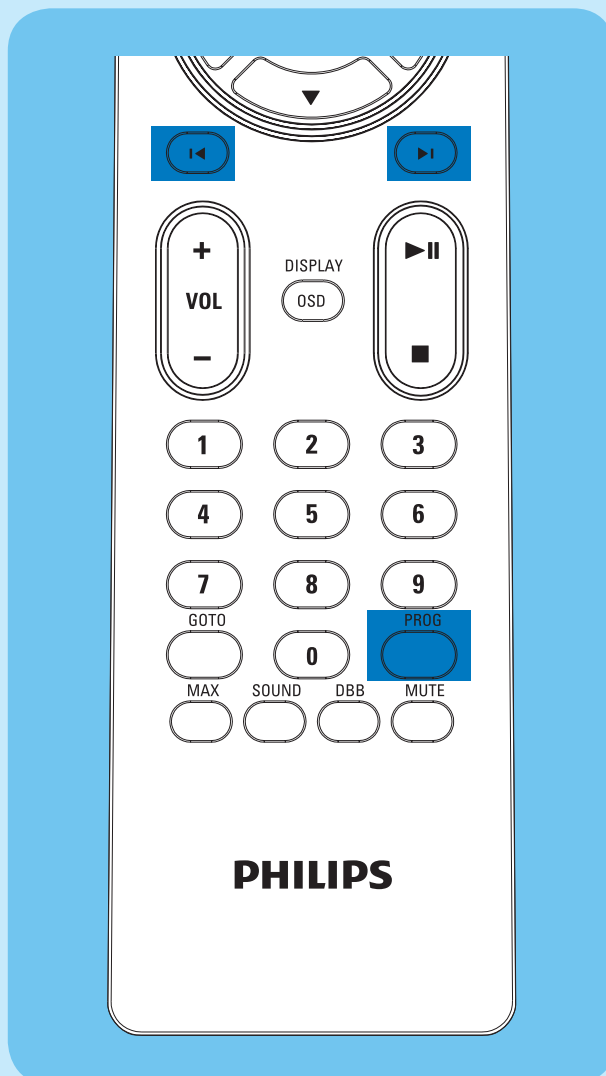
1 In tuner mode, press and hold **PROG** for 2 seconds to activate automatic program mode.

↳ **[AUTO]** (auto) is displayed and begins to blink.

↳ All available stations are programmed in the order of waveband reception strength.

↳ The first programmed radio station is broadcast automatically.

2 In tuner mode, press **◀/▶** to select a preset number.



*** Tip**

- Detailed features and additional functions are described in the user manual.



© Royal Philips Electronics N.V. 2009
All rights reserved.

Specifications are subject to change without notice.
Trademarks are the property of Koninklijke Philips
Electronics N.V. or their respective owners.