



PHILIPS

FW- C28

Mini Hi-Fi Systems



PHILIPS

Let's make things better.



English

Français

Español

Deutsch

Nederlands

Italiano

Svenska

Dansk

Suomi

Português

Ελληνικά

Important notes for users in the U.K.

Mains plug

This apparatus is fitted with an approved 13 Amp plug. To change a fuse in this type of plug proceed as follows:

- 1 Remove fuse cover and fuse.
- 2 Fix new fuse which should be a BS1362 5 Amp, A.S.T.A. or BSI approved type.
- 3 Refit the fuse cover.

If the fitted plug is not suitable for your socket outlets, it should be cut off and an appropriate plug fitted in its place.

If the mains plug contains a fuse, this should have a value of 5 Amp. If a plug without a fuse is used, the fuse at the distribution board should not be greater than 5 Amp.

Note: The severed plug must be disposed of to avoid a possible shock hazard should it be inserted into a 13 Amp socket elsewhere.

How to connect a plug

The wires in the mains lead are coloured with the following code: blue = neutral (N), brown = live (L).

As these colours may not correspond with the colour markings identifying the terminals in your plug, proceed as follows:

- Connect the blue wire to the terminal marked N or coloured black.
- Connect the brown wire to the terminal marked L or coloured red.
- Do not connect either wire to the earth terminal in the plug, marked E (or \perp) or coloured green (or green and yellow).

Before replacing the plug cover, make certain that the cord grip is clamped over the sheath of the lead - not simply over the two wires.

Copyright in the U.K.

Recording and playback of material may require consent. See Copyright Act 1956 and The Performer's Protection Acts 1958 to 1972.

Italia

DICHIARAZIONE DI CONFORMITA'

Si dichiara che l'apparecchio FWC28 Philips risponde alle prescrizioni dell'art. 2 comma 1 del D.M. 28 Agosto 1995 n. 548.

Fatto a Eindhoven , il 28/02/2000

Philips Consumer Electronics
Philips, Glaslaan 2
5616 JB Eindhoven, The Netherlands

Norge

Typeskilt finnes på apparatens underside.

Observer: Nettbryteren er sekundert innkopleet. Den innebygde nettdelen er derfor ikke frakopleet nettet så lenge apparatet er tilsluttet nettkontakten.

For å redusere faren for brann eller elektrisk støt, skal apparatet ikke utsettes for regn eller fuktighet.

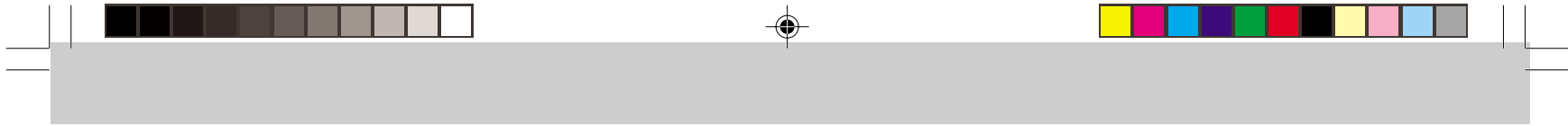


INDEX

English 5	English
Français 25	Français
Español 47	Español
Deutsch 69	Deutsch
Nederlands 91	Nederlands
Italiano 113	Italiano
Svenska 135	Svenska
Dansk 157	Dansk
Suomi 179	Suomi
Português 199	Português
Ελληνικά 221	Ελληνικά

**CLASS 1
LASER PRODUCT**





English



CONTENTS

General Information	5
Safety Information	5
Preparation	6 - 7
Controls	8 - 9
Operating The System	10 - 11
CD	12 - 14
Tuner	14 - 16
Tape	17 - 18
AUX	18
Recording	19 - 20
Clock	20
Timer	21
Sleep Timer	21
Specifications	22
Maintenance	23
Troubleshooting	23 - 24

GENERAL INFORMATION

General Information

- **The type plate (which contains the serial number) is located at the rear of the system.**
- **Recording is permissible if copyright or other rights of third parties are not infringed.**
- **This product complies with the radio interference requirements of the European Community.**

Environmental Information

All unnecessary packaging has been omitted. We have tried to make the packaging easy to separate into three materials: cardboard (box), polystyrene foam (buffer) and polyethylene (bags, protective foam sheet).

Your system consists of materials which can be recycled and reused if disassembled by a specialized company. Please observe the local regulations regarding the disposal of packaging materials, exhausted batteries and old equipment.

Accessories (Supplied)

- Remote control
- Batteries (two AA size) for remote control
- AM loop antenna
- FM wire antenna
- AC power cord

SAFETY INFORMATION

Safety Information

- Before operating the system, check that the operating voltage indicated on the typeplate (or the voltage indication beside the voltage selector) of your system is identical with the voltage of your local power supply. If not, please consult your dealer. The typeplate is located at the rear of your system.
- When the system is switched on, do not move it around.
- Place the system on a solid base (e.g. a cabinet).
- Place the system in a location with adequate ventilation to prevent internal heat build-up in your system. Allow at least 10cm clearance from the rear and the top of the unit and 5cm from the each side.
- Do not expose the system to excessive moisture, rain, sand or heat sources.
- Under no circumstances should you repair the system yourself, as this will invalidate the warranty!

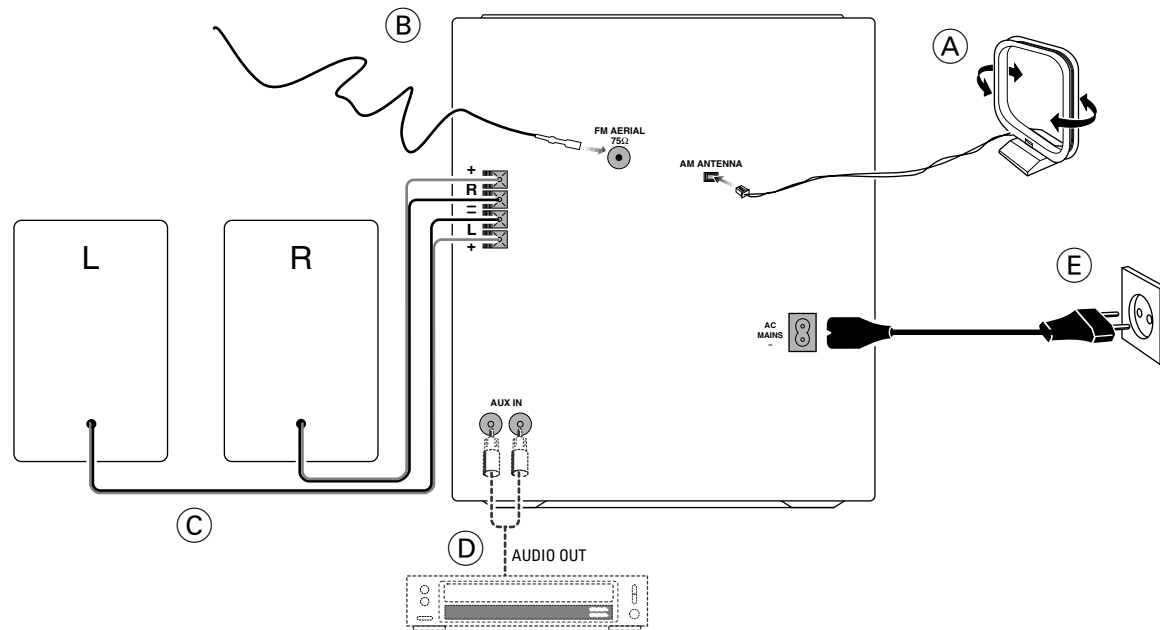
- If the system is brought directly from a cold to a warm location, or is placed in a very damp room, moisture may condense on the lens of the CD unit inside the system. Should this occur, the CD player will not operate normally. Leave the power on for about one hour with no disc in the system until normal playback is possible.
- Electrostatic discharge may cause unexpected problems. See whether these problems disappear if you unplug the AC power cord and plug it in again after a few seconds.
- **To disconnect the system from the power supply completely, remove the AC power plug from the wall socket.**

English

PREPARATION

English

Rear Connections



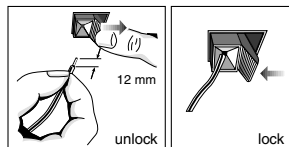
PREPARATION

English

A AM Loop Antenna Connection

Connect the supplied loop antenna to the AM ANTENNA terminal. Place the AM loop antenna far away from the system and adjust its position for the best reception.

- Clip the stripped portion of the speaker wire as shown.

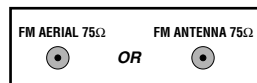


B FM Wire Antenna Connection

Connect the supplied FM wire antenna to the FM AERIAL (FM ANTENNA) 75 Ω terminal. Adjust the position of the FM antenna for the best reception.

Outdoor Antenna

For better FM stereo reception, connect an outdoor FM antenna to the FM AERIAL (FM ANTENNA) 75 Ω terminal using a 75 Ω coaxial wire.



D Connecting other equipment to your system

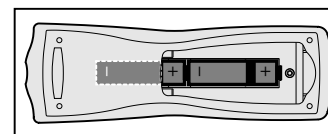
You can connect the audio left and right OUT terminals of a TV, VCR, Laser Disc player, DVD player or CD Recorder to the AUX IN terminals at the rear of the system.

E AC Power Supply

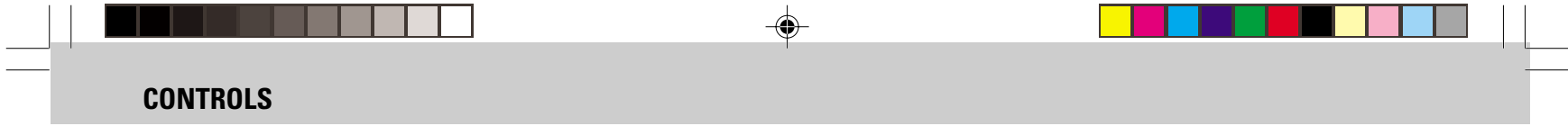
After all other connections have been made, connect the AC power cord to the system and to the wall outlet.

Inserting batteries into the Remote Control

- Insert the batteries (Type R06 or AA) into the remote control as shown in the battery compartment.



- To avoid damage from possible battery leakage, remove dead batteries or batteries that will not be used for a long time. For replacement, use type R06 or AA batteries.



CONTROLS

English



CONTROLS

English

Controls on the system and remote control

1 **STANDBY ON**

- to switch the system on or to standby mode.
- to use for EASY SET.

2 **DBB (DYNAMIC BASS BOOST)**

- to switch on bass boost to enhance bass response or to switch off bass boost.

3 **DIGITAL SOUND CONTROL PANEL**

- to view the desired DSC display.

4 **DSC (DIGITAL SOUND CONTROL)**

- to select the desired sound effect : OPTIMAL, JAZZ, ROCK or TECHNO.

5 **PROGRAM**

- for CD to program CD tracks.
- for TUNER to program preset radio stations.

- for CLOCK to select 12 or 24 hour in clock setting mode.

6 **RECORD**

- to start recording on tape deck 2.

7 **DUBBING**

- to dub a tape in normal speed.

8 **DISPLAY SCREEN**

- to view the current setting of the system.

9 **CD CAROUSEL TRAY**

10 **DISC CHANGE**

- to change CD(s).

11 **OPEN•CLOSE**

- to open or close the CD carousel tray.

12 **DISC 1 / DISC 2 / DISC 3 (CD DIRECT PLAY)**

- to select a CD tray for playback.

13 **SOURCE** – to select the following:

CD / (CD 1•2•3)

- to select CD mode. When CD playback is stopped, press to select disc tray 1, 2 or 3.

TUNER / (BAND)

- to select Tuner mode. When in tuner mode, press to select the waveband: FM, MW or LW.

TAPE / (TAPE 1•2)

- to select Tape mode. When tape playback is stopped, press to select either tape deck 1 or 2.

AUX / (VIDEO)

- to select sound from an external source (e.g. TV, VCR, Laser Disc player, DVD player or CD Recorder).

14 **MODE SELECTION**

SEARCH ◀▶ (TUNING ◀▶)

- for CD to search backward/forward.

- for TUNER to tune to a lower or higher radio frequency.

- for TAPE to rewind or fast forward a tape.

- for CLOCK to set the hour (*on the system only*).

STOP•CLEAR ■

- for CD to stop CD playback or to clear a program.

- for TUNER to stop programming.

- for TAPE to stop playback or recording

- for DEMO (*on the system only*) to start or stop demonstration mode.

PLAY ▶ / PAUSE ■■

- for CD to start or interrupt playback.

- for TAPE to start playback.

PREV ◀ / NEXT ▶ (PRESET ▼▲)

- for CD to skip to the beginning of the current, previous, or next track.

- for TUNER to select a preset station in memory.

- for CLOCK to set the minute (*on the system only*).

15 **VOLUME**

- to increase or decrease the volume.

16 **HEADPHONE**

- to connect headphones.

17 **DIM**

- to select different brightness for the display screen : DIM 1, DIM 2, DIM 3 or DIM OFF.

18 **CLOCK•TIMER**

- to view the clock, set the clock or set the timer.

RDS

- to select RDS data in the following order: station name, program type and radio text.

NEWS

- to hear news automatically

19 **AUTO REPLAY**

- to select playback mode either in continuous AUTO PLAY or ONCE only.

20 **TAPE DECK 2**

21 **TAPE DECK 1**

22 **REPEAT**

- to repeat a CD track, a disc, or all available discs.

23 **MUTE**

- to switch off the sound temporarily.

24 **SHUFFLE**

- to play all the available discs and their tracks in random order.

25 **SLEEP**

- to switch the system to standby mode at a selected time.

26 **POWER**

- to switch the system to standby mode.

Notes for remote control:

- **First select the source you wish to control by pressing one of the source select keys on the remote control (e.g. CD, TUNER, etc.).**
- **Then select the desired function (▶, ◀, ▶|, etc.).**

OPERATING THE SYSTEM

English

Important:
Before you operate the system, complete the preparation procedures.

Demonstration mode

The system has a demonstration mode that shows the various features offered by the system. **When the system is switched on for the first time, the demonstration mode will start automatically.**

Notes:

- During the demonstration, if you press any source (or standby-on) button, the system will switch to the respective mode (or standby).
- When the system is switched to standby mode, the demonstration will resume 5 seconds later.

To stop the demonstration mode

- Press and hold **■** (on the system only) for **5 seconds** when the system is in demonstration mode.
 - The demonstration will stop.
 - "DEMO OFF" is displayed.
 - The system will switch to standby mode.

Note:

- Even though the AC power cord is removed from and reconnected to the wall socket, the demonstration will remain off until it is switched on again.

To start the demonstration mode

- Press and hold **■** (on the system only) for **5 seconds** when the system is in standby mode.
 - The demonstration will begin.

Easy Set

EASY SET allows you to store all available radio stations and RDS stations automatically.

- 1 Press and hold **STANDBY ON** (on the system only) for **5 seconds**, when the system is in standby or demonstration mode.
 - "EASY SET" will be displayed, and followed by "TUNER" and then "AUTO".
 - EASY SET will start searching for all RDS radio stations with sufficient signal strength and then followed by radio stations on FM, MW and LW band respectively. Weak RDS radio stations may be stored in later presets.
 - All available RDS and radio stations with sufficient signal strength will be stored. Up to 40 presets may be stored.

- 2 The system will proceed to set the RDS time automatically with the stored RDS preset station.

- If no RDS station is available in the first preset station, the program will exit automatically.
 - After a radio station is found, "EASY SET" will be displayed and followed by "TIME"

- When searching RDS time;
 - "SEARCH RDS TIME" will be displayed.
 - When RDS time is read, "RDS TIME" will be displayed. The current time will be displayed for 2 seconds and stored automatically.

Notes:

- EASY SET will start with the RDS station, if there are still presets available, it will continue to store the FM, MW and LW bands respectively.
- When EASY SET is used, all previously stored radio stations will be replaced.
- The last preset radio station or the first available RDS station will appear on the display when EASY SET is completed.
- If RDS station does not transmit RDS time within 90 seconds, the program will exit automatically and the display will show "NO RDS TIME".

Switching the system ON

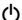
- Press **CD, TUNER, TAPE** or **AUX**.

You can also switch on the system by pressing any one of the CD DIRECT PLAY buttons.

OPERATING THE SYSTEM

English

Switching the system to standby mode

- Press **STANDBY ON** or  on the remote control.
→ The system will switch to standby mode.

Selecting the Source

- Press the respective source selection button: **CD**, **TUNER**, **TAPE** or **AUX**.
→ The display indicates the selected source.

Note:

- For an external source, make sure you have connected the audio left and right OUT terminals of the external equipment (TV, VCR, Laser Disc player, DVD player or CD Recorder) to the AUX IN terminals.

DIM mode

You can select the desired brightness for the display.

- Press **DIM** to select DIM 1, DIM 2, DIM 3 or DIM OFF display mode.
→ The **DIM** display lights up.
→ "DIM 1", "DIM 2", "DIM 3" or "DIM OFF" will be displayed depending on the mode selected.

DIM OFF - normal brightness with Spectrum Analyzer On



DIM 1 - normal brightness with Spectrum Analyzer Off

DIM 2 - half brightness with Spectrum Analyzer On

DIM 3 - half brightness with Spectrum Analyzer Off and all LEDs on the system will be switched off.




Sound Control

VOLUME ADJUSTMENT

Adjust **VOLUME** to increase or decrease the sound level.

For Personal Listening

Connect the headphones plug to the  socket at the front of the system. The speakers will be muted.

DIGITAL SOUND CONTROL (DSC)

The DSC feature enables you to enjoy special sound effects that have preset equalizer settings, providing the best music reproduction.

- Press **DSC** to select OPTIMAL, JAZZ, ROCK or TECHN.
→ The Digital Sound Control display panel will light up respectively.
→ "OPTIMAL", "JAZZ", "ROCK" or "TECHNO" and the respective flag will be displayed.

Note:

- When "OPTIMAL" sound is selected, DBB will be switched on automatically.

DYNAMIC BASS BOOST (DBB)

The DBB mode enhances the bass response.

- Press **DBB** to switch on bass response.
→ The DBB button lights up.
→ "DBB ON" and the DBB flag will be displayed.

To switch off DBB

- Press **DBB** again.
→ The DBB button light is switched off.
→ "DBB OFF" will be displayed.

Note:

- Some CDs or tapes might be recorded in high modulation, which causes a distortion at high volume. If this occurs, switch off DBB or reduce the volume.

MUTE (only on remote control)

This feature allows you to temporarily switch off the sound of the system without switching off the system when you require a moment of silence.

- Press **MUTE** on the remote control to switch off the sound.
→ "MUTE" and the MUTE flag will be displayed.
- Press **MUTE** again on the remote control or increase the **VOLUME** to switch on the sound.

CD

English

Discs for playback

This system can play all digital audio CD, finalized digital audio CD-Recordable and finalized digital audio CD-Rewritable format discs.



CD Direct Play

- You can play a CD directly by pressing the **DISC 1**, **DISC 2** or **DISC 3** button. The CD player will stop at the end of playback of the selected disc.
 - A lit button indicates that a disc is loaded in the disc tray.
 - A flashing button indicates that a disc is playing.

Loading the CD Changer

- Press **CD** to select CD mode.
- Press **OPEN•CLOSE**.
 - The CD carousel tray slides out.
- Load a CD with the printed side up in the right tray.
 - You can load another disc in the left tray.
 - To load the third disc, press the **DISC CHANGE** button.
 - The CD carousel tray will rotate until the empty tray is ready for loading.
- Press **OPEN•CLOSE** to close the CD carousel tray.
 - The total number of tracks and the playing time of the selected disc appear on the display.

Note:

- To ensure good system performance, wait until the CD changer completely reads the disc(s) before proceeding.

Playing a CD

- Press **▶** to start playback.
 - The disc tray, track number and elapsed playing time of the current track appear on the display.
 - To interrupt playback, press **||**.
 - The playing time flashes.
 - To resume playback, press **▶** again.
- To stop playback, press **■**.

Note:

- All the available discs will play once, then stop.

Disc Change

You can change the outer two discs while the third inner disc is stopped or is playing.

- Press **DISC CHANGE**.
 - The CD carousel tray slides out.
- Replace the discs in the left and right disc trays.
 - If you press **DISC CHANGE** again during playback, the CD will stop playing.

Warning!

- This system is designed for conventional CDs. Do not use any accessories such as disc stabilizer rings or CD treatment sheets, etc., which may damage the CD mechanism.**
- Do not load more than one disc into each tray.**
- When the CD changer is loaded with CDs, do not turn over or shake the system. This may jam the changer.**

You may load three discs in the CD changer for continuous playback without interruption.



CD

English

→ The CD carousel tray will rotate until the inner tray is rotated out and is ready for changing.

- 3 Press **OPEN•CLOSE** to close the CD carousel tray.

Selecting a desired track

Selecting a desired track when playback is stopped

- 1 Press **◀** or **▶** until the desired track appears on the display.
- 2 Press **▶** to start playback.
→ The selected track number and elapsed playing time appear on the display.

Selecting a desired track during playback

- Press **◀** or **▶** until the desired track appears on the display.
→ The selected track number and elapsed playing time appear on the display.
- If you press **◀** once it will skip to the beginning of the current track and play the track again.

Note:

- Pressing **◀** during shuffling can only skip to the beginning of the current track.

Searching for a particular passage during playback

- Press and hold **◀◀** or **▶▶** until the desired passage is located.
→ The volume will be reduced.
- Play returns to normal when **◀◀** or **▶▶** is released.

Programming Tracks

Programming tracks of a loaded CD is possible when playback is stopped. The display will indicate the total tracks stored in the program. Up to 40 tracks can be stored in the memory in any order. When 40 tracks are stored and you attempt to store another track, the display will show "PROGRAM FULL".

- 1 Load the desired discs in the disc trays.
- 2 Press **PROGRAM** to start programming.
→ The **PROG** flag starts flashing.
→ It will cancel any previously selected repeat mode.
- 3 Press the **CD** (CD 1•2•3) or **DISC 1/2/3** button to select the disc.
- 4 Press **◀** or **▶** to select the desired track.
- 5 Press **PROGRAM** to store the track.
• Repeat steps **3** to **5** to store other discs and tracks.
- 6 Press **■** once to end programming.
→ The total number of tracks programmed and total playing time appear on the display.

Notes:

- If the total playing time is more than "99.59" or if one of the programmed tracks has a number greater than 30, then "----" appears on the display instead of the total playing time.
- If the system is reading the discs, programming is not possible, "READING" will be displayed and followed by "DISC X" "X" is the current read disc number.
- During programming, if no button is pressed within 20 seconds, the system will exit program mode automatically.

Reviewing the program

Reviewing of the program is possible only when playback is stopped.

- Press **◀** or **▶** repeatedly to review the programmed tracks.
- Press **■** to exit review mode.

Playing the program

- 1 Press **▶** to start program playback.
→ "PLAY PROGRAM" will be displayed.
→ The track number and elapsed playing time of the current track will appear on the display.
- If you press **REPEAT** during program playback, the current track or all programmed tracks will be played repeatedly.

- "TRACK" or "PROGRAM" will be displayed.
- The **REP** and **PROG** flags appear on the display.

- 2 Press **■** to stop program playback.

Notes:

- If you press any of the CD **DIRECT PLAY** buttons, the system will play the selected disc or track and the stored program will be ignored temporarily. The **PROG** display also will disappear temporarily from the display. It will reappear when playback of the selected disc ends.
- **REPEAT DISC** mode will be cancelled when program playback begins.

Erasing the program (when playback is stopped)

- Press **■**.
→ "PROGRAM CLEARED" will be displayed.

Note:

- The program will be erased when the system is disconnected from the power supply or when the CD carousel tray is opened.



CD

English

Shuffle *(only on remote control)*

In shuffle mode, the system plays all the available discs and their tracks in random order. Shuffle may be used also when tracks are programmed.

To shuffle all the discs and tracks

- 1 Press **SHUFFLE**.
 - "SHUFFLE" will be displayed.
 - The SHUF flag, the disc and the track selected at random appear on the display.
 - The discs and the tracks will be played in random order until you press ■.
 - If you press **REPEAT** during shuffling, the current track or all available discs will be played repeatedly.
 - "TRACK" or "ALL DISC" will be displayed.
 - The REP and SHUF flags appear on the display.
- 2 Press **SHUFFLE** again to resume normal playback.
 - The SHUF flag disappears from the display.

Note:

- REPEAT DISC mode will be cancelled when shuffle is selected.

Repeat *(only on remote control)*

You can play the current track, a disc or all available discs repeatedly.

- 1 Press **REPEAT** on the remote control to select the various repeat modes.
 - "TRACK", "DISC", "ALL DISC" or "OFF" will be displayed.
 - The REP flag appears on the display.
 - The selected track, selected disc or all available discs will now be played repeatedly until you press ■.
- 2 Press **REPEAT** until the "OFF" mode is displayed to resume normal playback.
 - The REP flag disappears from the display.

Notes:

- REPEAT DISC mode is not available during program play or shuffle mode.
- You can also repeat shuffling a program.
 - "TRACK" or "PROGRAM" will be displayed.
 - The REP, PROG, and SHUF flags appear on the display.

TUNER

Note:

- For 'EASY SET' feature, please refer to page 10.

Tuning to radio stations

- 1 Press **TUNER (BAND)** to select TUNER mode.
 - "TUNER" will be displayed.
 - A few seconds later, the current radio frequency will be displayed.
- 2 Press **TUNER (BAND)** again to select the desired waveband : FM, MW or LW.
- 3 Press ◀ or ▶ for more than one second, then release.
 - The display will show "SEARCH" until a radio station with sufficient signal strength is found.

- Repeat this procedure until the desired station is reached.
- To tune to a weak station, briefly press ◀◀ or ▶▶ repeatedly until the display shows the desired frequency and/or when the best reception has been obtained.

Storing Preset Stations

You can store up to 40 radio stations in the memory. When a preset radio station is selected, the preset number appears next to the frequency on the display.

Automatic programming

- 1 Press **TUNER** (BAND).
- 2 Press **PROGRAM** for more than one second.
 - The **PROG** flag starts flashing and "AUTO" will be displayed.
 - The system will start searching for all radio stations with RDS and then followed by radio stations on FM, MW and LW band respectively.
 - All available stations will be stored automatically. The frequency and preset number will be displayed briefly.
 - The system will stop searching when all the available radio stations are stored or when the memory for 40 preset radio stations is used.
 - The system will remain tuned to the last stored preset radio station.

Notes:

- You can cancel the automatic programming by pressing **PROGRAM** or **■** (on the system only).
- If you want to reserve a section of preset numbers, for example preset numbers 1 to 9, select preset 10 before starting automatic programming, only the preset numbers 10 to 40 will be programmed.

Manual programming

- 1 Press **TUNER** (BAND).
- 2 Press **TUNER** (BAND) to select the desired waveband : FM, MW or LW.
- 3 Press **PROGRAM** for less than one second.
 - The **PROG** flag starts flashing.
 - The next available preset number will be displayed for selection.
- 4 Press **◀** or **▶** to tune to the desired frequency.
 - If you wish to store the radio station to another preset number, press **▼** or **▲** to select the desired preset number.
- 5 Press **PROGRAM** again.
 - The **PROG** flag disappears and the radio station will be stored.

- Repeat **steps 3 – 5** to store other preset radio stations.

Notes:

- When 40 radio stations are stored and you attempt to store another radio station, the display will show "PROGRAM FULL". If you want to change an existing preset number, repeat steps 3 – 5.
- You can cancel manual programming by pressing **■** (on the system only).
- During programming, if no button is pressed within 20 seconds, the system will exit program mode automatically.

Tuning to Preset Radio Stations

- Press **▼** or **▲** to select the desired preset number.
 - The preset number, radio frequency, and waveband appear on the display.

Receiving RDS Radio Station

RDS (Radio Data System) is a broadcasting service that allows FM stations to send additional information along with the regular FM radio signal. This additional information can contain:

- **STATION NAME:** The radio station name is displayed.
- **PROGRAM TYPE:** The following program types exist and can be received by your tuner: News, Affairs, Info, Sport, Educate, Drama, Culture, Science, Varied, Pop M, Rock M, M.O.R. (middle of the road music), Light M, Classics, Other M, No type.
- **RADIO TEXT (RT):** text messages appear in the display.

When you have tuned to a RDS station, the RDS logo (RDS) and the radio station name will appear on the display:

- The display normally shows the radio station name if available. By repeatedly pressing **RDS** button you can change the type of display information:
 - The display shows in turn:
STATION NAME → PROGRAM TYPE → RADIO TEXT → TUNED FREQUENCY → STATION NAME ...

Note:

- When you press the **RDS** button and the display shows "NO RDS", it indicates that either the tuned station is not transmitting RDS signal or it is a non RDS station.

RDS Clock

Some RDS station may be transmitting a real clock time at an interval of every minute.

Setting the time with RDS clock

- 1 Press **CLOCK•TIMER**.
 - "----:--" or current time appears on the display.
- 2 Press **CLOCK•TIMER** once more to enter clock setting mode.
 - "00:00" or current time starts flashing.

TUNER

English

3 Press **RDS**.

- The message "SEARCH RDS TIME" will be displayed.
- If the current station is not receiving any RDS information, "NO RDS TIME" will be displayed.
- When the RDS clock is read, "RDS TIME" will be displayed. The current clock time is displayed for 2 seconds and will be stored automatically.
- If within 90 seconds, the RDS time is not detected, "NO RDS TIME" will be displayed.

Note:

- Some RDS station may be transmitting a real time clock at a minute interval. The accuracy of the transmitted time depends on the transmitting RDS station.

News (only available in Radio Station with RDS)

You can activate NEWS function in Standby or any source mode except Tuner mode. Once the News PTY (program type) is detected in a RDS station, it will switch to TUNER mode automatically.

To start NEWS function

1 Press **NEWS**.

- The **NEWS** and "NEWS" will be displayed.
- It will scan stations stored in the first 5 preset and wait for the News Program Type data to be available in any of these RDS stations. During the search :
 - The current source activity will remain uninterrupted.
 - If no RDS station is found in the first 5 presets, the NEWS function will be switched off. The display will show "NO RDS NEWS" and **NEWS** will disappear from the display.
- When NEWS transmission is detected, the system will switch to Tuner mode.
 - The **NEWS** starts flashing.

To cancel NEWS function

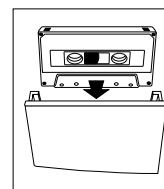
- Press **NEWS** again.
 - The **NEWS** disappears and "NEWS OFF" will be displayed.

Notes:

- If you are listening to a non RDS TUNER radio station and should you decide to hear NEWS, first select other source (e.g. CD, TAPE or AUX), then press NEWS.
- Before using the NEWS feature, ensure that the first 5 presets are RDS stations.
- The NEWS works only once for each activation.
- During News bulletin, you can press any available source or Tuner function keys to cancel NEWS function and execute the relevant source mode.
- If set is switched to Tuner source, the NEWS function will be cancelled, "NEWS OFF" will be displayed immediately after the "TUNER" message.

Loading a tape

- 1 Press **OPEN**.
- 2 The tape deck door opens.
- 3 Load the tape with the open side downward and the full spool to the left.



- 4 Close the tape deck door.

Auto Replay

- Press **A. REPLAY** to select either continuous AUTO REPLAY or ONCE during tape playback.
→ "AUTO REPLAY" () or "ONCE" () will be displayed.

Notes:

- This feature is available during tape playback only.
- When "AUTO REPLAY" is selected, the tape will rewind automatically at the end of playback for the selected side. Then it will start playing again. It will replay up to a maximum of 20 times until you press **■**.
- When "ONCE" is selected, the tape will play the selected side once and then stop.

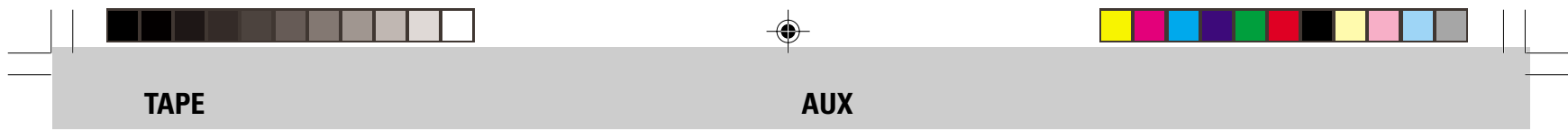
Tape Playback

- 1 Press **TAPE** (TAPE 1•2) to select TAPE mode.
→ "TAPE 1" or "TAPE 2" will be displayed and followed by "T 1 >>>" or "T 2 >>>".
- 2 Load the tape into the selected tape deck.
- 3 Press **▶** to start playback.
→ "T 1" or "T 2" with ">" scrolling right will be displayed.
 - Press **A. REPLAY** to select the different type of playback mode (see Auto Replay)
- 4 Press **■** to end playback.
→ "T 1" or "T 2" with ">>>>" will be displayed.

Rewind/Fast Forward

When playback is stopped

- 1 You can rewind or fast forward the tape by pressing **◀** or **▶** respectively.
→ If rewinding, "T 1 <" or "T 2 <" with "<" scrolling left will be displayed.
→ If fast forwarding, "T 1 >" or "T 2 >" with ">" scrolling right will be displayed
→ The tape will stop automatically at the end of rewinding or fast forwarding.
- 2 Press **■** to stop rewinding or fast forwarding.



English

During playback

- Press and hold ◀◀ or ▶▶ until the desired passage is located.
 - "T 1 or T 2" with "<< or >>" scrolling left or right will be displayed depending on which button is pressed.
 - During searching, the sound is reduced to a low volume.
 - When you release ◀◀ or ▶▶, the tape continues playing.

Notes:

- During rewinding or fast forwarding of a tape, it is also possible to select another source (e.g. CD, TUNER, or AUX).
- Before playing a tape, check and tighten slack tape with a pencil. Slack tape may get jammed or may burst in the mechanism.
- C-120 tape is extremely thin and is easily deformed or damaged. It is not recommended for use in this system.
- Store the tapes at room temperature and do not put them too close to a magnetic field (for example, a transformer, TV, or speaker).

Selecting External Equipment

If you have connected the audio out terminals of the external equipment (TV, VCR, Laser Disc player, DVD player or CD Recorder) to the AUX IN terminals, you can hear the enhanced sound from the system.

- Press **AUX** to select the external equipment.
 - "AUX" will be displayed.

Note:

- All the sound control features (e.g. DSC, DBB, etc.) are available for selection.



RECORDING

English

Notes:

- For recording, use only tape of IEC type I (normal tape) or IEC type II (CrO₂).
- The tape is secured at both ends with leader tape. At the beginning and end of tape, nothing will be recorded for six to seven seconds.
- The recording level is set automatically, regardless of the position of VOLUME, DBB or DSC.
- To prevent accidental recording, break out the tab on the left shoulder of the tape side that you want to protect.
- If "CHECK TAPE" is displayed, the protection tab has been broken. Put a piece of clear adhesive tape over the opening. Do not cover the CrO₂ tape detection hole when covering the tab opening.

One Touch Recording

- For One Touch Recording, as soon as you press RECORD, the current source (CD, TUNER or AUX) will be recorded on tape deck 2.

- 1 Load a blank tape in tape deck 2.
- 2 Press **RECORD** to start recording.
→ The **REC** starts flashing.
- 3 Press **■** to stop recording.

Note:

- When you press RECORD while in TAPE mode, "SELECT SOURCE" will be displayed. One Touch Recording is not possible in TAPE mode.

CD Synchro Start Recording

- 1 Load a blank tape into tape deck 2 and a disc into a disc tray.
- 2 Press **CD** to select CD mode.
 - You can program the tracks in the order you want them to be recorded (see Programming Tracks). If not, select the disc by pressing **CD** (CD 1•2•3) and the tracks are recorded according to the order on the selected disc.
- 3 Press **RECORD** to start recording.
→ The **REC** starts flashing.
 - CD will start playback automatically.
- 4 Press **■** to stop recording.

Dubbing tapes (from tape deck 1 to tape deck 2)

- 1 Press **TAPE** (TAPE 1•2) to select tape deck 2.
- 2 Load the prerecorded tape into tape deck 1 and a blank tape into tape deck 2 with full spool to the left.
- 3 Press **DUBBING**
→ "DUB" with ">" scrolling right will be displayed.
 - Dubbing will start immediately.
→ The **REC** starts flashing.
- 4 Press **■** to stop dubbing.





RECORDING

English

Notes:

- At the end of side A, flip the tapes to side B and repeat the procedure.
- Dubbing of tapes is only possible from tape deck 1 to tape deck 2.
- To ensure good dubbing, use tapes of the same length.
- You can switch to other source while dubbing.

Recording from other sources

(only on tape deck 2)

- 1 Press **TAPE** (TAPE 1•2) to select tape deck 2.
- 2 Load a blank tape into tape deck 2 with the open side downward.
- 3 Press **CD, TUNER** or **AUX**.
 - Start playback of the selected source.
- 4 Press **RECORD** to start recording.
 - The **REC** starts flashing.
- 5 Press **■** to stop recording.

Notes:

- During recording, it is not possible to listen to another source.

CLOCK

View Clock

You can view the clock (if it is set) if the system is in Standby mode or when any sound source is selected (CD, TUNER, etc.). The clock will be displayed for about seven seconds.

- Press **CLOCK•TIMER** briefly.
 - “ 10:38 PM or 22:38 ” (the current time) will be displayed depending on whether you have selected 12- or 24-hour mode.
 - “ --- : --- ” will be displayed if the clock is not set.

Clock Setting

The clock can be set in either 12- or 24-hour mode, e.g. “ 12:00 AM ” or “ 00:00 ”. Before setting the clock, you must be in the View Clock mode.

- 1 Press **CLOCK•TIMER** to select clock mode.
- 2 Press **PROGRAM** to select 12- and 24-hour mode.
 - If 12-hour mode is selected, “ 12:00 ” starts flashing and the **AM** lights up.
 - If 24-hour mode is selected, “ 00:00 ” starts flashing.
- 3 Set the hour with **◀** or **▶** on the system.
- 4 Set the minute with **◀** or **▶** on the system.

TIMER

- 5 Press **CLOCK•TIMER** again to store the setting.
→ The clock starts.

- To exit without storing the setting, press **■** on the system.

Notes:

- During clock setting, if no button is pressed within 90 seconds, the system will exit clock setting mode automatically.
- When a power interruption occurs, the clock setting is erased.
To set the time with RDS clock, see "Receiving RDS Radio Station" under **TUNER** section.

Timer Setting

- The system can switch on to CD, TUNER, or TAPE 2 mode automatically at a preset time. It can serve as an alarm to wake you up.
- Before setting the timer, make sure the clock is set correctly.
- The timer will always be switched on once it is set.
- **The volume of the timer will increase from the minimum level until the volume level before the set is switched to standby mode.**

- 1 Press and hold **CLOCK•TIMER** for more than **2 seconds** to select timer mode.
→ "12:00 AM" or "00:00" or the last timer setting starts flashing depending on whether you have selected 12- or 24-hour mode.
→ The **TIMER** starts flashing.
→ The selected source is lit while other available sources are flashing.

- 2 Press **CD**, **TUNER** or **TAPE** to select the desired source.

- Before selecting CD or TAPE, make sure a CD or tape is loaded in the CD tray or tape deck 2.

- 3 Press **◀** or **▶** on the system to set the hour for the timer to start.

- 4 Press **◀** or **▶** on the system to set the minute for the timer to start.

- 5 Press **CLOCK•TIMER** to store the start time.

- The timer is now set.
→ The **TIMER** remains on the display.
- At the preset time, the timer will be activated.
→ The selected source will be played.

Notes:

- During timer setting, if no button is pressed within 90 seconds, the system will exit timer setting mode automatically.
- If the source selected is TUNER, the last tuned frequency will be switched on.

SLEEP TIMER

Sleep Timer (only on remote control)

This feature allows you to select a length of time after which the system will switch to the standby mode automatically.

- 1 Press **SLEEP** on the remote control repeatedly to select a period of time.
→ The selections are as follows (time in minutes):

60 → 45 → 30 → 15 → OFF → 60

...

- "SLEEP XX" or "OFF" will be displayed. "XX" is the time in minutes.

- 2 When you reach the desired length of time, stop pressing the **SLEEP** button.
→ After this amount of time passes, the system will switch to the standby mode.

To switch off the Sleep Timer

- Press **SLEEP** repeatedly until "OFF" is displayed, or press the **STANDBY ON** button.

- If the source selected is CD, playback will begin with the first track of the selected disc or program. If the CD trays are empty, the TUNER will be selected instead.
- The timer will not activate if a recording is in progress.

To switch off the TIMER

- 1 Press and hold **CLOCK•TIMER** for more than **2 seconds**.

- 2 Press **■** on the system to cancel the timer.
→ The timer is now switched off.
→ The display will show "CANCEL" and the **TIMER** disappears.

To start the TIMER again (for the same preset time and source)

- 1 Press and hold **CLOCK•TIMER** for more than **2 seconds**.

- 2 Press **CLOCK•TIMER** again to store the start time.
→ The timer is now on.
→ The **TIMER** appears on the display.

SPECIFICATIONS

English

Specifications

AMPLIFIER

Output power	
Music Power	2 x 30 W
RMS ⁽¹⁾	2 x 15 W
Signal-to-noise ratio	≥ 67 dBA (IEC)
Frequency response	50 – 15000 Hz
Input sensitivity	
AUX In	700 mV
Output	
Speakers	≥ 6 Ω
Headphones	32 Ω – 1000 Ω

(1) ±1 dB, 6Ω, 1 kHz, 10% THD

CD PLAYER

Number of programmable tracks	40
Frequency response	20 – 20000 Hz
Signal-to-noise ratio	≥ 80 dBA
Channel separation	≥ 60 dB (1 kHz)
Total harmonic distortion	< 0.003%

TUNER

FM wave range	87.5 – 108 MHz
MW wave range	531 – 1602 kHz
LW wave range	153 – 279 kHz
Number of presets	40
Antenna	
FM	75 Ω wire
AM	Loop antenna

TAPE DECK

Frequency range	
Chrome tape (type II)	80 – 12,500 Hz (8 dB)
Normal tape (type I)	80 – 12,500 Hz (8 dB)
Signal-to-noise ratio	
Chrome tape (type II)	≥ 52 dBA
Normal tape (type I)	≥ 48 dBA
Wow and flutter	≤ 0.4% DIN

SPEAKERS

System	2 way; double port bass reflex
Impedance	6 Ω
Woofer	1 x 4" full range
Dimensions (w x h x d)	210 x 310 x 233 (mm)
Weight	2.5 kg each

GENERAL INFORMATION

Material	Polystyrene
AC Power	220 – 230V / 50 Hz
Power Consumption	
Active	35 W
Standby	< 15 W
Dimensions (w x h x d)	265 x 310 x 320 mm
Weight (without speakers)	5.6 kg

Subject to modification

MAINTENANCE

Maintenance

Cleaning the Cabinet

- Use a soft cloth slightly moistened with a mild detergent solution. Do not use a solution containing alcohol, spirits, ammonia or abrasives.

Cleaning Discs

- When a disc becomes dirty, clean it with a cleaning cloth. Wipe the disc from the center out.
- Do not use solvents such as benzine, thinner, commercially available cleaners, or antistatic spray intended for analog records.



Cleaning the CD lens

- After prolonged use, dirt or dust may accumulate at the CD lens. To ensure good playback quality, clean the CD lens with Philips CD Lens Cleaner or any commercially available cleaner. Follow the instructions supplied with cleaner.

Cleaning the Heads and the Tape Paths

- To ensure good recording and playback quality, clean the heads, the capstan(s), and pressure roller(s) after every 50 hours of tape operation.
- Use a cotton swab slightly moistened with cleaning fluid or alcohol.
- You can also clean the heads by playing a cleaning tape once.

Demagnetizing the heads

- Use a demagnetizing tape available at your dealer.

TROUBLESHOOTING

Warning! Under no circumstances should you try to repair the set yourself as this will invalidate the guarantee. Do not open the set as there is a risk of electric shock.

- If a fault occurs, check the points listed below before taking the system for repair.
- Should any problems persist after you have made these checks, consult your nearest dealer or service center.

CD Player Operation

"NO DISC" is displayed.

- The disc is inserted upside down.
→ *Place CD with printed side up.*
- Moisture condensation at the lens.
→ *Wait until lens has adjusted to normal room temperature.*
- There is no disc in the CD tray.
→ *Insert a CD.*
- The CD is dirty, badly scratched or warped.
→ *Clean or replace the CD.*
- The CD lens is dirty or dusty.
→ *See section under Maintenance (page 23).*

"DISC NOT FINALIZED" is displayed.

- The CD-RW or CD-R disc is not properly recorded for use with a standard CD player.
→ *Read the instruction booklet of your CD-Rewritable or CD-Recorder on how to finalize a recording.*
- The CD is badly scratched or dirty.
→ *Replace or clean CD.*

Radio Reception

Poor radio reception.

- The signal is too weak.
→ *Adjust the antenna.*
- *Connect an external antenna for better reception.*
- The TV or VCR is too close to the stereo system.
→ *Separate the stereo system from the TV or VCR.*

"NO RDS TEXT" is displayed.

- RDS text message is not available.
→ *Select another RDS station.*

English

TROUBLESHOOTING

English

Tape Deck Operation

"RECORDING ACTIVE" is displayed.

- A recording is in progress.
- Stop the recording or wait until it is finished.

"TAPE DUBBING ONLY" is displayed.

- Tape dubbing is only possible in tape mode.
- Switch source to tape mode.

Recording or playback cannot be made or there is a decrease in audio level.

- Dirty tape heads, capstans or pressure rollers.
- See section on tape deck maintenance (page 23).
- Magnetic build-up in the record/playback head.
- Use demagnetizing tape.

Tape deck door cannot open.

- Power failure or AC power plug disconnect from the wall outlet during tape playback.
- Reconnect the AC power plug and switch on the system again.

General

System does not react when any button is pressed.

- Electrostatic discharge.
- Press STANDBY ON to switch the system off. Remove the AC power plug from the wall outlet, then reconnect the power plug and switch on the system again.

No or poor sound.

- Volume is not turned up.
- Adjust VOLUME.
- The headphones are connected.
- Disconnect the headphones.
- Speakers are not connected or are connected wrongly.
- Check that the speakers are connected correctly.
- Make sure the stripped speaker wire is clamped.

Reversed left and right sound.

- Speakers are connected wrongly.
- Check the speaker connections and location.

Lack of bass sound or apparently imprecise physical location of musical instruments.

- Speakers are connected wrongly.
- Check the speaker connection for proper phasing, colored/black wires to colored/black terminals.

Remote control has no effect on the system.

- Wrong source is selected.
- Select the source (CD, TUNER, etc.) before pressing the function button, (▶, ◀, ▶, etc.).
- The distance to the system is too large.
- Reduce the distance.
- Batteries are inserted incorrectly.
- Insert the batteries with their polarities (+/- signs) as indicated.
- Batteries are exhausted.
- Replace the batteries.

Timer is not working.

- Clock is not set.
- Set the clock.
- Timer is not switched on.
- Press CLOCK • TIMER to switch on the timer.
- Recording is in progress.
- Stop recording.

Clock setting is erased.

- There was a power failure.
- Reset the clock.

System displays features automatically; buttons flash continuously.

- Demonstration mode is switched on.
- Press and hold ■ (on the system) for five seconds to switch off the demonstration.

All lighted buttons are not lit.

- Display is switch on in DIM 3 mode.
- Press DIM until DIM OFF display mode is shown.