

家用真空卧式吸尘器

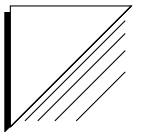
Impact Plus
FC8388 / FC8386 / FC8384 / FC8382

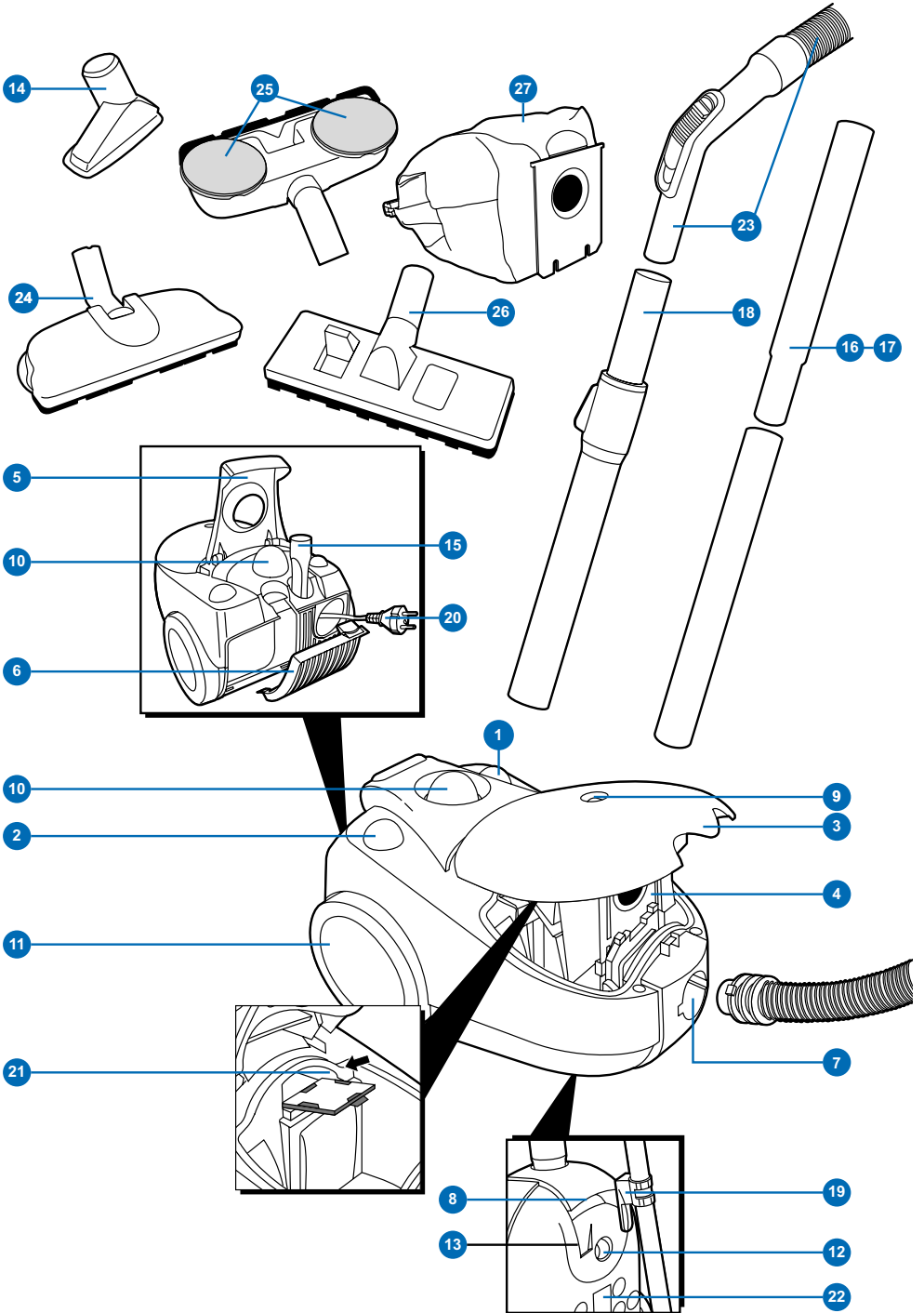


使用产品前请仔细阅读本使用说明书



PHILIPS







FC8388, FC8386, FC8384, FC8382

ENGLISH 6

简体中文 13

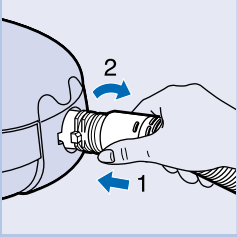
Important

- ▶ Only use Philips double-layer paper dustbags Sydney+ or S-bag™ or the cotton dustbag provided (types FC8388, FC8386, FC8384 only).
- ▶ Never suck up water or any other liquid. Never suck up ashes until they are cold.
- ▶ When the vacuum cleaner is used to suck up fine dust, the pores of the dustbag may become clogged, causing the passage of air through the dustbag to become obstructed. As a result, the 'dustbag full' indicator will indicate that the dustbag needs to be replaced, even though the dustbag is not full at all.
- ▶ Never use the appliance without the Motor Protection Filter. This could damage the motor and shorten the life of the appliance.
- ▶ If the mains cord of this appliance is damaged, it may only be replaced by Philips or a service centre authorised by Philips, as repair requires special tools and/or parts.

General description

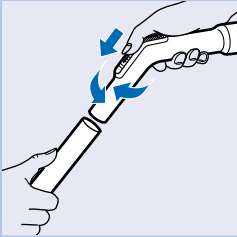
- 1 On/Off button
- 2 Cordwinder button
- 3 Opening dustcover
- 4 Dustbag
- 5 Hinging handle
- 6 Opening filtercover
- 7 Tapturn opening
- 8 Front grip
- 9 Dustbag full indicator
- 10 Turnknob
- 11 Rearwheels
- 12 Front wheel
- 13 Storage position
- 14 Small nozzle (types FC8388, FC 8386 only)
- 15 Crevice tool
- 16 Plastic tubes (type FC8382 only)
- 17 Chrome tubes (types FC8386, FC8384 only)
- 18 Telescopic tube (type FC8388 only)
- 19 Parking ridge
- 20 Plug
- 21 Motor protection filter assy
- 22 Typeplate
- 23 Bend with hose assy
- 24 Twist & Clean nozzle (type FC8388 only)
- 25 Twist & Clean polishing pads (type FC8388 only)
- 26 Combi nozzle
- 27 Cotton dustbag (types FC8388, FC8386, FC8384 only)

Connecting accessories



- 1** To connect the hose, push it into the appliance and turn it clockwise.

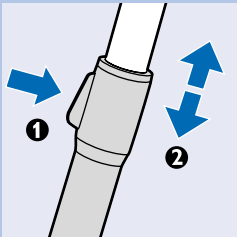
To disconnect the hose, turn it anticlockwise and pull it out of the appliance.



- 2** Connect the tubes to each other and to the handgrip by inserting the narrow section into the wider section while turning it a little. The tube with the clip is the lower tube.

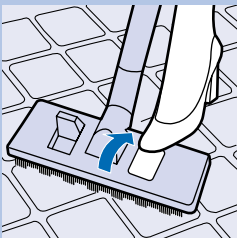
You can connect the accessories in the same way.

Disconnect the accessories and tubes by pulling them and turning them a little.



- 3** Telescopic tube (type FC8388 only):

Adjust the tube to the length you find most comfortable during vacuum cleaning.

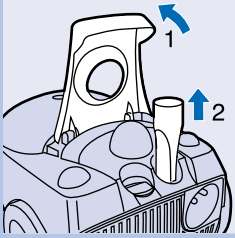


- 4** The combi nozzle can be used on either carpets (without brush) or hard floors (with brush):

► Push the rocker switch on top of the combi nozzle with your foot to make the brush strip for cleaning hard floors come out of the nozzle housing.

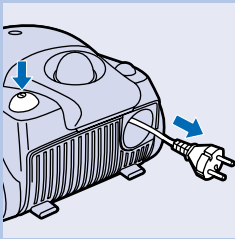


► Push the rocker switch on the other side to make the brush strip disappear into the housing.

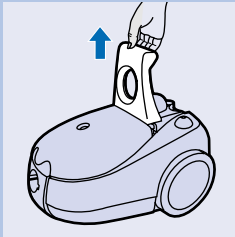


- 5 The crevice nozzle can be found in the special storage compartment.

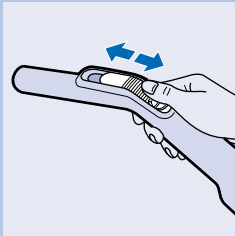
Vacuum cleaning



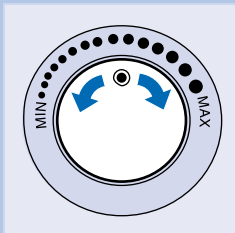
- 1 Pull the cord out of the appliance and put the mains plug in the wall socket.
Switch the appliance on by pushing the on/off button.



- 2 To carry the appliance, put the handle in upright position.

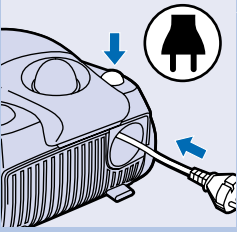


- 3 You can adjust the suction power by means of the slide on the handgrip.



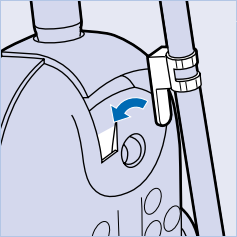
- 4 You can adjust the suction power by means of the electronic suction power control .

Storage



- 1 Switch the appliance off and remove the mains plug from the wall socket.

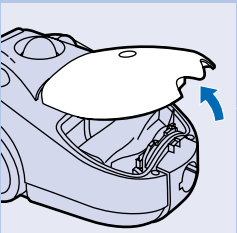
Rewind the mains cord by pressing the cord rewind button.



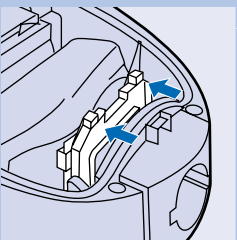
- 2 Put the appliance in upright position and attach the lower tube to the appliance by means of the clip.

The clip can be slide along the tube to adjust its height.

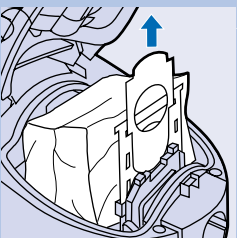
Replacing the dustbag



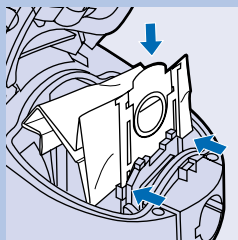
- ▶ Replace the dustbag as soon as the 'dustbag full' indicator has changed colour permanently.
- 1 Switch the appliance off and open the cover.



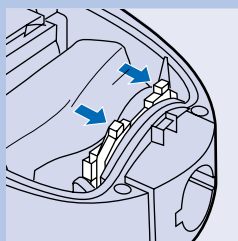
- 2 Push the dustbag holder backwards.



- 3 Lift the dustbag out of the compartment by pulling the cardboard lug upwards, which causes the dustbag to be sealed.



- 4** Slide the cardboard front of the new dustbag into the two grooves of the dustbag holder. Press it down as far as possible.



- 5** Pull the dustbag holder forwards ('Click'). You cannot close the cover if no dustbag has been inserted.

Philips double layer dustbags Sydney+ are available under type number HR6999.

Philips S-bag™ paper dustbags are available under type number FC8021.

- ▶ If provided, you can use the cotton dustbag instead of paper dustbags.

The cotton dustbag can be used and emptied repeatedly. For removing and inserting the cotton dustbag, simply follow the instructions for replacing paper dustbags.

To empty the cotton dustbag:

- 1** Remove the clip by sliding it off the dustbag sideways.
- 2** Undo the metal hooks.
- 3** Shake out the contents.
- 4** Close the dustbag by fastening the metal hooks and sliding the clip back onto the bottom edge of the dustbag.

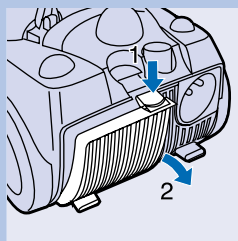
Filter replacement

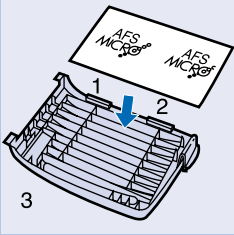
AFS Micro Filter

Replace the AFS Micro Filter when you insert the first of a new set of dustbags or once a year if you are using a cotton dustbag.

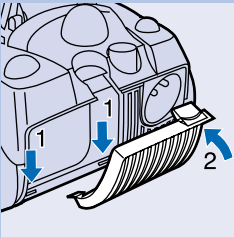
The AFS Micro Filter will remove a large part of the smallest particles from the exhaust air.

- 1** Open the grill and remove the filter





- Place the sides (1, 2) and the bottom edge (3) of the new filter properly behind the ridges of the holder.



- Put the holder back into the vacuum cleaner by first hooking the bottom edge of the holder into the appliance (1) and then pushing the holder towards the appliance (2) until it snaps home.

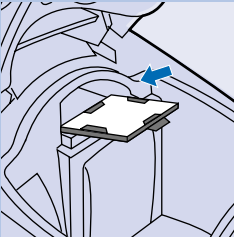
Make sure the filter holder has been placed properly.

Motor Protection Filter

Replace the Motor Protection Filter when you insert the first of a new set of dustbags.

If you are using the cotton dustbag, wash the Motor Protection Filter in lukewarm water once a year.

Make sure the Motor Protection Filter is completely dry before you put it back into the appliance.



- Switch the appliance off and open the cover. Take out the filter holder and remove the filter.
- Insert a new filter into the holder with the white side facing upwards and place the holder back.

Two AFS Micro Filters and one Motor Protection Filter are available under type number FC8032.

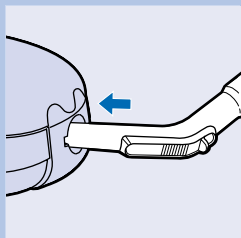
Environment

To make recycling possible, the plastics used for this appliance have been coded.

The cardboard packaging has been made of recycled material and is fully recyclable.

Insufficient suction power

- Check if the dustbag needs to be replaced.
- Check if the filters need to be replaced.
- Check if the slide on the handgrip is closed.



- 4** Check if the electronic suction power control is at its maximum setting .
- 5** Check if the nozzle, tube or hose is blocked up. To remove the obstruction, disconnect the blocked-up item and connect it (as far as possible) the other way around. Switch the vacuum cleaner on to force the air through the blocked-up item in opposite direction.

Information & service

If you need information or if you have a problem, please visit the Philips Web site at www.philips.com or contact the Philips Customer Care Centre in your country (you will find its phone number in the worldwide guarantee leaflet). If there is no Customer Care Centre in your country, turn to your local Philips dealer or contact the Service Department of Philips Domestic Appliances and Personal Care BV.

重要信息

请妥善保管本使用说明书

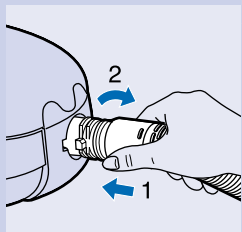
- ▶ 请仅使用飞利浦双层纸集尘袋 Sydney+ 或 S-bag™ 或所提供的棉质吸尘袋 (仅限于 FC8388, FC8386, FC8384 型号)。
- ▶ 切勿用于吸水或其它液体。切记只可吸取冷却后的灰烬。
- ▶ 当用吸尘器吸取细小灰尘时,集尘袋的洞孔可能会堵塞,导致通过集尘袋的气流不畅。此时,将会出现“集尘袋已满”的指示灯,表示必须更换吸尘袋,即使集尘袋并未装满。
- ▶ 请勿在未安装马达保护过滤网的情况下使用吸尘器。这将会使马达受损,并缩短吸尘器的使用寿命。
- ▶ 如果吸尘器电源线损坏,只有飞利浦或由飞利浦授权的服务中心方可进行更换,因为更换需要特殊的工具和/或零件。

产品图示

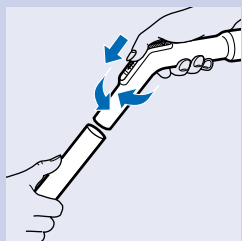
- 1 开/关按钮
- 2 电源线回卷按钮
- 3 打开吸尘盖
- 4 集尘袋
- 5 手柄
- 6 打开滤网盖
- 7 软管接口
- 8 前方手柄
- 9 集尘袋已满指示灯
- 10 吸力控制旋钮
- 11 后轮
- 12 前轮
- 13 夹件存放位置
- 14 小号吸嘴(仅限于FC8388, FC 8386型号)
- 15 缝隙吸嘴

- 16 塑料管(仅限于FC8382型号)
- 17 镀铬管(仅限于FC8386, FC8384型号)
- 18 伸缩管(仅限于FC8388型号)
- 19 供竖立放置的夹件设计
- 20 插头
- 21 马达保护滤网
- 22 产品铭牌
- 23 弯管装置
- 24 洁旋风吸尘嘴(仅限于FC8388型号)
- 25 洁旋风吸尘嘴微纤维软垫(仅限于FC8388型号)
- 26 两用吸尘嘴
- 27 棉质集尘袋(仅限于FC8388, FC8386, FC8384 型号)

连接附件



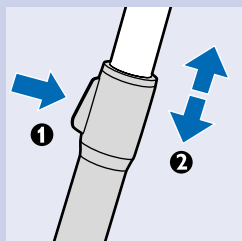
- 1** 将软管接入本机,并以顺时针方向旋转,即可安装软管。以逆时针方向旋转,并从本机中拉出,即可取下软管。



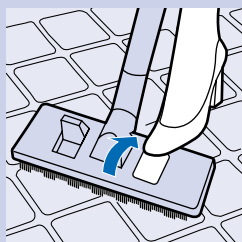
- 2** 将硬管互相连接起来,并连接到手柄上。方法是,将较窄的一头插入较宽的一头,并稍稍旋转。带夹子的硬管应处于较低位置。

其他附件也可以同样连接。

拉出硬管并稍稍旋转,即可断开附件和硬管。



- 3** 伸缩管(仅限于FC8388型号)
将硬管调整到您在工作中感觉到最舒适的长度。

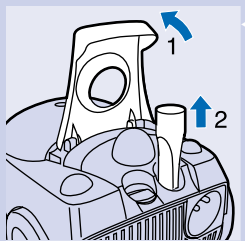


- 4** 两用吸尘嘴可用于地毯(不带刷毛)或硬面地板(带刷毛)的吸尘。

- ▶ 若清洁硬面地板,用脚按下两用吸尘嘴顶端的刷毛转换块,使刷条从吸尘嘴中露出来。

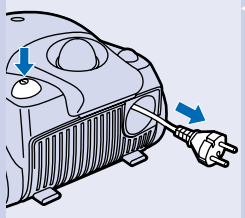


4 若清洁地毯, 按下另一端的刷毛转换块, 使刷条缩回吸尘嘴中。

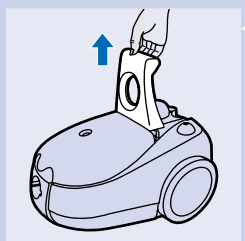


5 可在附件贮存格中找到缝隙吸尘嘴。

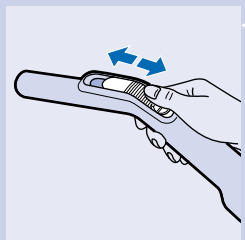
使用吸尘器



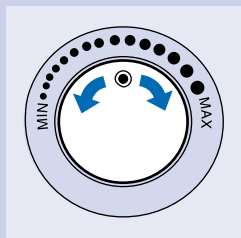
1 将电线从吸尘器中拉出, 并将插头插入电源插座中。
按下开机/关机按钮, 启动吸尘器。



2 将手柄向右上方推动, 即可抬起本机。

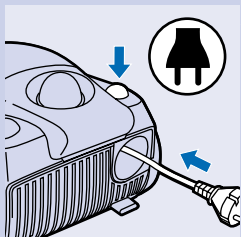


3 可用手柄上的滑动开关调节吸尘强度。

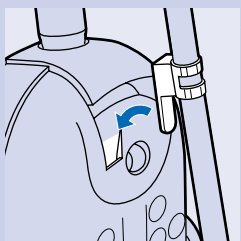


4 也可用电动吸力控制开关调节吸尘强度。

存放

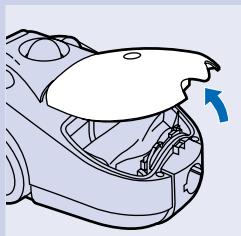


1 关闭电源,并将插头从插座拔出。
按下电源线回卷按钮将线回卷到吸尘器中。



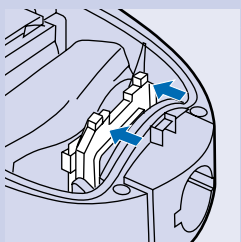
2 将吸尘器直立起来,并利用夹子将下侧吸管装在吸尘器上。
夹子可以沿着硬管滑动,以调整其高度。

更换集尘袋

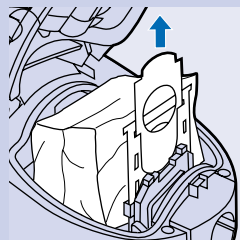


一旦“集尘袋已满”指示灯持久改变颜色,应立即更换集尘袋。

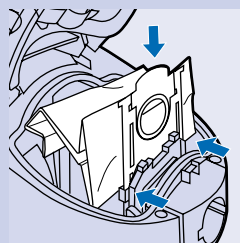
1 关闭吸尘器电源并打开盖子。



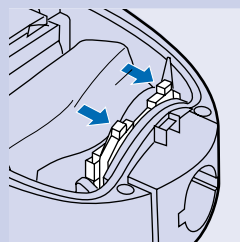
2 将集尘袋固定架向后推。



- 3 将集尘袋的纸板片边缘向上拉,即可将集尘袋抬起,从而封闭集尘袋。



- 4 将新集尘袋的纸板片套入集尘袋固定架上的两个狭槽中。尽量向下按。



- 5 向前拉动集尘袋的拉手(‘咔嚓’声)。如果未插入任何集尘袋,则无法盖上盖子。

飞利浦双层纸质集尘袋Sydney+的供应型号为HR6999。

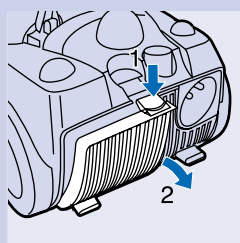
飞利浦S-bag™ 纸质集尘袋的供应型号为FC8021。

- ▶ 如有提供,您可使用棉质集尘袋代替纸质集尘袋。棉质集尘袋可以在倒空后重复使用。更换棉质集尘袋,只需遵照更换纸质集尘袋的步骤即可。

倒空棉质集尘袋:

- 1 将夹子从集尘袋侧面滑下,取下夹子。
- 2 打开金属钩。
- 3 摇动倒出里面的积尘。
- 4 固定金属钩,关上集尘袋,将夹子重新滑回集尘袋底部边缘的位置。

更换过滤网

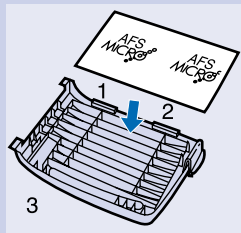


AFS微尘过滤网

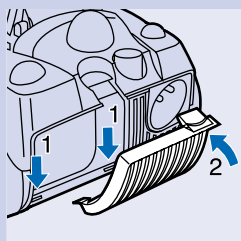
如果您使用的是纸质集尘袋,可在第一次更换新的集尘袋时,同时更换微尘过滤网。如果您使用的是棉质集尘袋,建议每年更换一次AFS微尘过滤网。

AFS微尘过滤网可以过滤掉抽出空气中的大部分细小微粒。

- 1 打开格栅,取出过滤网。



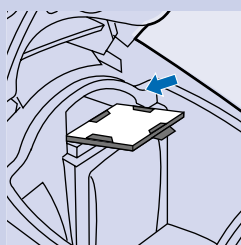
- 2 将新过滤网的边侧(1,2)和底部边缘(3)正确置于集尘袋固定架的上部。



- 3 将固定架放回吸尘器中时,可首先将固定架的底部边缘钩挂到吸尘器上(1),然后将固定架向吸尘器方向推动,直到到位。请确保过滤网固定架正确放置。

马达保护滤网

当第一次使用更换的新集尘袋时,请同时更换马达保护滤网。如果使用的是棉质集尘袋,请每年一次,将马达保护滤网在温水中清洗。请确保将马达保护滤网重新放入吸尘器中时,已经完全干燥。



- 1 切断吸尘器电源,打开盖子。取出过滤网固定架,取出过滤网。
- 2 将一个的过滤网插入固定架,使白色的一面向上,然后将固定架放回原处。

两个AFS微尘过滤网和一个马达保护滤网的供应型号 FC8032。

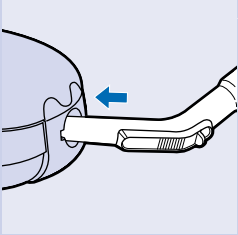
环保

为实现回收利用,我们对此吸尘器中使用的塑料进行了编号。

包装纸箱也由再生材料制成,完全可以回收。

吸尘力不足

- 1 检查是否需要更换集尘袋。
- 2 检查是否需要更换滤网。
- 3 检查手柄上的滑动开关是否固定。
- 4 检查电动吸尘力控制开关是否设置于最强力位置。



- 5** 检查吸尘嘴、硬管、软管是否堵塞。解决方法是,断开堵塞的部位,将其连接到另一端(越远越好)。接通吸尘器电源,迫使空气从相反方向通过堵塞部位。

信息和服务

如果您需要更多信息,或者您有任何问题,请访问我们的飞利浦网站: www.philips.com, 或和您所在国家的飞利浦顾客服务中心联系(您可在全球保修卡上找到服务中心的电话号码)。如果您所在的国家没有任何顾客服务中心,则请和当地的飞利浦经销商或飞利浦家用电器服务部门和客户关怀部门联系。

产品型号 规格

型号	额定功率	额定电压 / 频率
FC8382 (有调)	1200W	220V - 50Hz
FC8384 (有调)	1200W	220V - 50Hz
FC8386 (有调)	1300W	220V - 50Hz
FC8388 (有调)	1300W	220V - 50Hz

产品附件名称及数量

名称 / 数量	FC8382	FC8384	FC8386	FC8388
软管	1	1	1	1
接管	塑接管	金属接管	金属接管	伸缩接管
接管挂架	1	1	1	1
缝隙吸嘴	1	1	1	1
小号吸嘴	-	-	1	1
两用吸尘嘴 (地板/地毯)	1	1	1	1
洁旋风吸尘嘴	-	-	-	1

注意事项


维护和保养

- 除说明书上注明允许使用者进行维护和保养的项目外，其他的维护和保养的项目必须由飞利浦指定的维修中心进行。
- 切勿让儿童使用此产品。
- 当使用完毕或离开时，要切断电源。
- 对产品在使用时如出现异常的情况(如噪音、气味、温度升高、烟雾等)应立即切断电源，停止继续使用。
- 使用者可联系飞利浦全国顾客免费服务热线、当地的飞利浦办事处或飞利浦维修中心进行咨询。

故障种类和处理方法

- | | |
|--|---|
| <ul style="list-style-type: none"> • 机器不能工作 | <ul style="list-style-type: none"> • 请检查机器是否接上电源； • 电源开关是否打到“开”的位置上； • 其他配件是否已装上(如适用产品)。 |
| <ul style="list-style-type: none"> • 如果经上述的检查，机器还是无法开动 | <ul style="list-style-type: none"> • 使用者可联系飞利浦全国顾客免费服务热线、当地的飞利浦办事处或飞利浦维修中心进行咨询。 |
| <ul style="list-style-type: none"> • 产品在使用时如出现异常的情况(如噪音、气味、温度升高、烟雾等) | <ul style="list-style-type: none"> • 应立即切断电源，停止继续使用。 • 使用者可联系飞利浦全国顾客免费服务热线、当地的飞利浦办事处或飞利浦维修中心进行咨询。 |

CCEE证书号：

PHILIPS		
产品	: 飞利浦家用真空 卧式吸尘器	
型号	: FC 8382 / FC 8384 / FC 8386 / FC 8388	
额定电压	: 220V ~	
额定频率	: 50Hz	
额定输入功率	: 1200瓦 - 适用于FC 8382 / FC 8384 1300瓦 - 适用于FC 8386 / FC 8388	
产地	: 中国	
春飞家用电器有限公司 中国苏州新区玉山路 邮编：215011 电话：0512-6825 3516		
全国顾客免费服务热线：800 8203 678		
本产品根据国标GB4706.1-1998及GB4706.7-1999制造		

请妥善保管本使用说明书

发行日期：2003/04



