

Brilliance

FC6688, FC6687, FC6686, FC6685



PHILIPS



FC6688, 6687, 6686, 6666

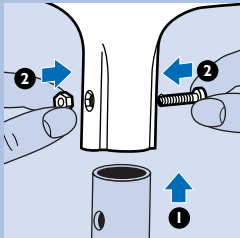
ENGLISH 4

ESPAÑOL 10

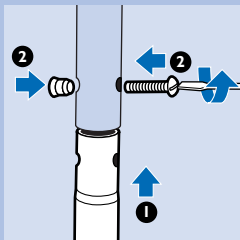
Important

- ▶ Read these instructions carefully and look at the illustrations before you start using the appliance.
- ▶ Never use the appliance on wet floors, or floors on which ashes or inflammable or explosive liquids are present.
- ▶ Make sure that the handstick is in upright position (i.e. that the appliance is switched off) before connecting it to the mains.
- ▶ Always remove the mains plug from the wall socket before turning the polisher upside down, e.g. to remove or attach the brushes or polishing discs.
- ▶ Make sure that the mains cord does not end up under the appliance while it is running. Prevent hands, feet, hair, clothes, etc. from coming into contact with the rotating brushes or discs.
- ▶ If the mains cord of this appliance is damaged, it must always be replaced by Philips or a service centre authorised by Philips, as special tools and/or parts are required.

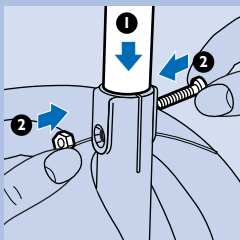
Preparing the appliance for use



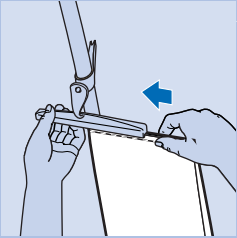
- 1 Connect the upper part of the handstick to the handle by means of the screws provided.



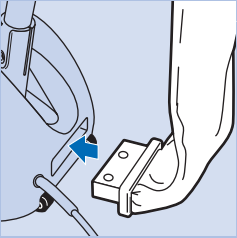
- 2 Connect the upper part of the handstick to the lower part of the handstick by means of the screws provided.



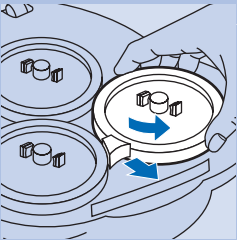
- 3 Place the handstick in the base of the appliance. Use the screws provided to secure the connections.



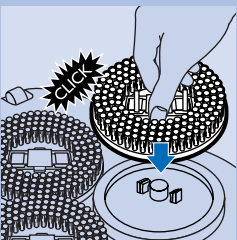
- 4** Slide the top of the dustbag in the upper dustbag holder.



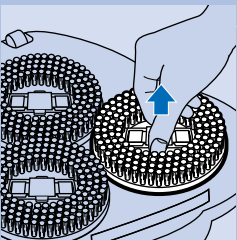
- 5** Connect the bottom of the dustbag to the appliance.



- 6** Remove the two metal clamps by turning one of the rubber wheels with your hand. Do not put the clamps back between the wheels.



- 7** Attach the brushes or the polishing discs. You will hear a click when you attach them properly.

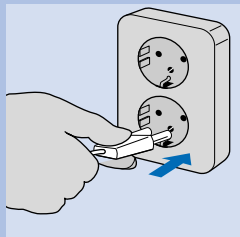


- 8** To detach the brushes or polishing discs, simply pull them off the appliance.

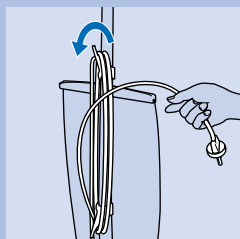
Before polishing

- 1** Clean the floor with a vacuum cleaner.
- 2** Remove stains, etc.

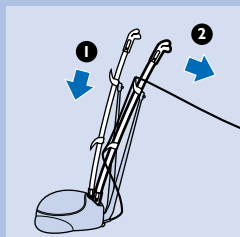
Polishing



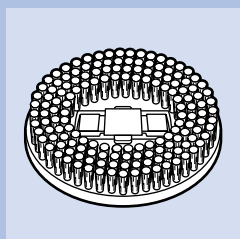
- 1 Unwind the mains cord and put the mains plug in the wall socket.



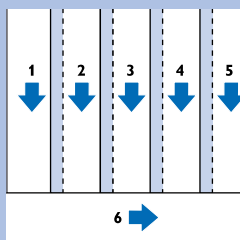
- 2 For extra safety: wind the cord around the handle once and put it in the cord holder.



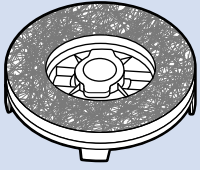
- 3 To switch the appliance on, push the handstick down and pull it towards you.



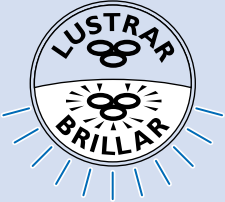
- 4 After having rubbed the floor polish onto the floor, wait until the polish has dried and use the brushes to polish the floor



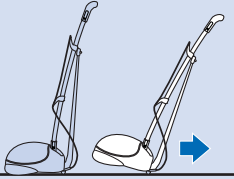
- 5 Always move the appliance in straight lanes. Circular movements will produce less good results.



- ▶ To give wooden floors (e.g. parquet) a deep shine, use the felt polishing discs.

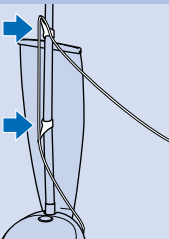


- ▶ Type FC 6688 only: select 'shining/****' for extra and long-lasting shine.

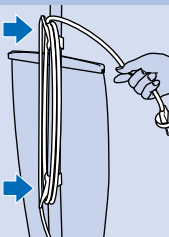


- ▶ To wheel the appliance across the floor without polishing, put the handstick in vertical position and tilt the appliance backwards.

Storing the appliance



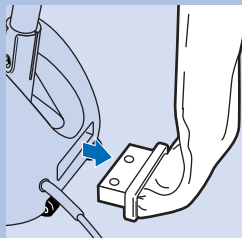
- 1 Wind the mains cord around the storage hooks.



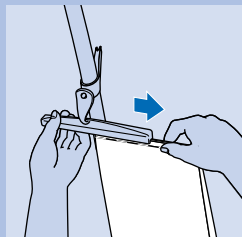
- 2 Fasten the end of the cord.

- ▶ The appliance can be stored with the brushes or discs still attached. It is not necessary to detach them.

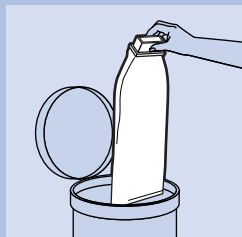
Emptying the dustbag



- 1 Empty the dustbag from time to time. First detach the lower part of the dustbag.



- 2 Pull the upper part of the dustbag out of the holder.



- 3 Turn the dustbag upside down over a dustbin and carefully shake the dust out of it.

Do not forget to reattach the dustbag before using the polisher again.

The dustbag can be washed with ordinary detergents.

Cleaning

- 1 Remove the mains plug from the wall socket before cleaning the appliance.

- 2 Use a damp cloth to clean the appliance.

Never immerse the appliance in water:

- 3 Detach the brushes and clean them with water and some detergent.
- 4 Clean the felt polishing discs by brushing them in soapy water. Then wipe the discs with a damp cloth.
- 5 Let the brushes and discs dry in horizontal position.

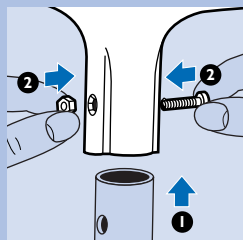
Information & service

If you need information or if you have a problem, please visit the Philips Web site at www.philips.com or contact the Philips Customer Care Centre in your country (you will find its phone number in the worldwide guarantee leaflet). If there is no Customer Care Centre in your country, turn to your local Philips dealer or contact the Service Department of Philips Domestic Appliances and Personal Care BV.

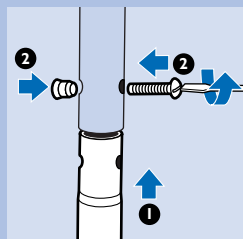
Importante

- ▶ Lea estas instrucciones de uso atentamente, observando al mismo tiempo las ilustraciones, antes de utilizar por primera vez el aparato.
- ▶ Nunca emplee el aparato en pisos húmedos, cenizas, líquidos inflamables o explosivos.
- ▶ Antes de conectarlo a la red, asegure que el mango está en posición vertical (significa aparato apagado)
- ▶ Saque siempre la clavija del tomacorriente antes de voltear la lustradora, por ejemplo, para cambiar cepillos o fieltros
- ▶ Asegure, que la lustradora no pase encima del cable de alimentación. Evite el contacto de manos, pies, cabellos, prendas de ropa, etc., con las escobillas o los fieltros, cuando el aparato esté en operación.
- ▶ Si el cable está dañado, debe recurrir a un taller de servicio autorizado Philips para su reparación, (se requieren herramientas/ partes especiales para su reparación).

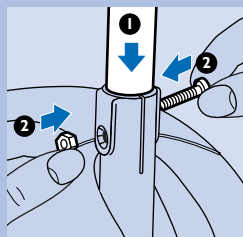
ARMANDO LA LUSTRADORA



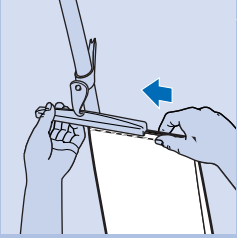
- 1** Monte el mango al tubo, utilizando los tornillos provistos en la caja



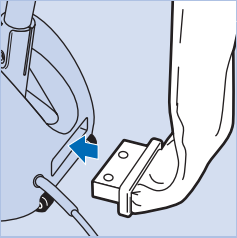
- 2** Utilizando los tornillos que se suministran, conecten la parte superior del mango a su parte inferior.



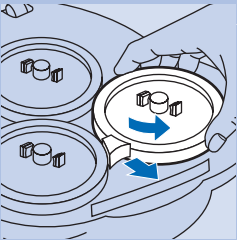
- 3** Coloquen el mango en la base del aparato. Para asegurar las conexiones, utilicen los tornillos que se suministran.



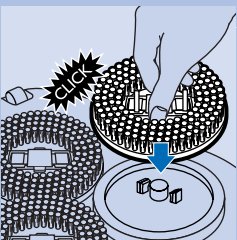
4 Coloque la bolsa recolectora



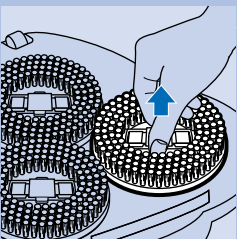
5 Conecte la bolsa recolectora al la base de la lustradora.



6 Saque los dos protectores metálicos de los rodillos, girando con la mano los cepillos (fig. 6). No vuelva a colocar los protectores.



7 Fije los cepillos o los fieltros en la parte inferior. Asegúrese de presionar hasta escuchar el "click", para verificar que estén correctamente colocados.



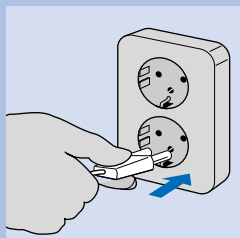
8 Para sacar los cepillos o los fieltros, simplemente extráigalos ejerciendo presión.

ANTES DE LUSTRAR

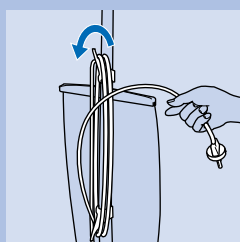
1 Antes de utilizar la lustradora, pase una aspiradora a toda la superficie

- 2** Asegúrese de eliminar todo tipo de manchas, residuos, etc

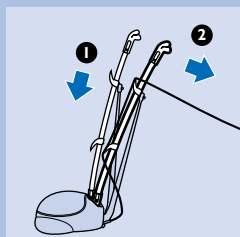
LUSTRADO



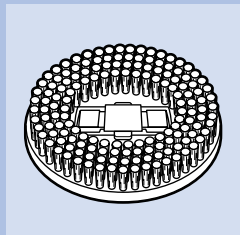
- 1** Desenrolle el cable y enchufe la clavija a un tomacorriente.



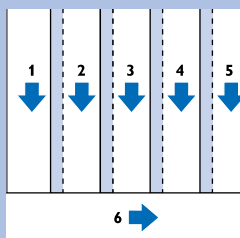
- 2** Para su seguridad: enrolle el cable sobrante en los ganchos de almacenamiento ubicado en los tubos.



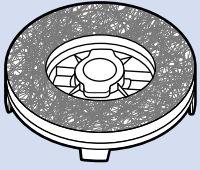
- 3** Para prender el aparato, presione el mango hacia abajo e inclínelo hacia abajo.



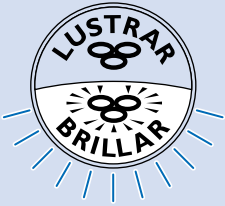
- 4** Después de aplicar la cera, espere hasta secar. Luego proceda a lustrar utilizando los cepillos.



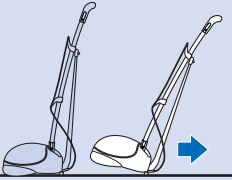
- 5** Pase la lustradora en líneas rectas. Los movimientos circulares pueden dar resultados menos satisfactorios.



- ▶ Utilizando los discos pulidores de fieltro , se puede dar un brillo más intenso a los pisos de madera (parquet).

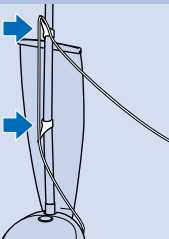


- ▶ Solamente para modelo FC 6688: seleccione 'brillar/****' para obtener un "extra brillo" de mayor duración

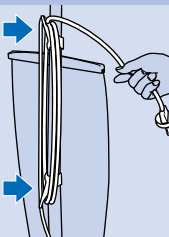


- ▶ Para transportar la lustradora apagada, vuelva el mango a la posición vertical original e incline el aparato hacia atrás.

ALMACENAMIENTO



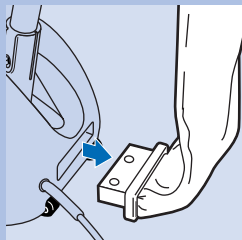
- 1 Enrolle el cable de alimentación alrededor de los ganchos de almacenamiento



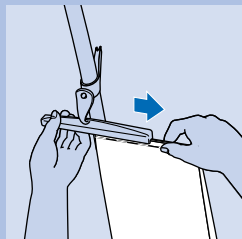
- 2 Fije el final del cable.

- ▶ El aparato puede ser almacenado con los cepillos ó los discos pulidores puestos. No es necesario quitarlos.

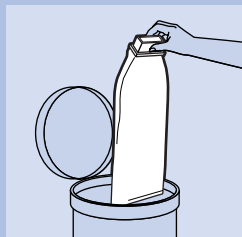
PARA VACIAR LA BOLSA RECOLECTORA



- 1 Vacíe la bolsa recolectora, con relativa frecuencia.



- 2 Saquen la parte superior de la bolsa de polvo fuera del soporte.



- 3 Den la vuelta a la bolsa para el polvo sobre un cubo para basura y, sacudiéndola con cuidado, quítenle el polvo.

No se olvide de colocar la bolsa recolectora antes de volver a utilizar la lustradora.

La bolsa puede ser lavada con detergentes comunes.

LIMPIEZA

- 1 Saque la clavija del tomacorriente antes de proceder a limpiar el aparato.

- 2 Use un paño húmedo para limpiar el aparato.

Nunca coloque el aparato en agua.

- 3 Extraiga los cepillos y lávelos con agua y detergente.

- 4 Limpie los discos pulidores de fieltro cepillándolos con agua jabonosa. Luego, limpie los discos con un paño húmedo.

- 5 Deje los cepillos y los discos secar en posición horizontal.

GARANTÍA & SERVICIO

No deje de visitar nuestra página web www.philips.com, para obtener mayor información de nuestros productos, o contacte directamente nuestro Centro de Información al Consumidor, correspondiente al país en que se encuentra (ver Certificado de Garantía). En caso de no existir un CIC en su país, diríjase a Service local o al representante de ventas

