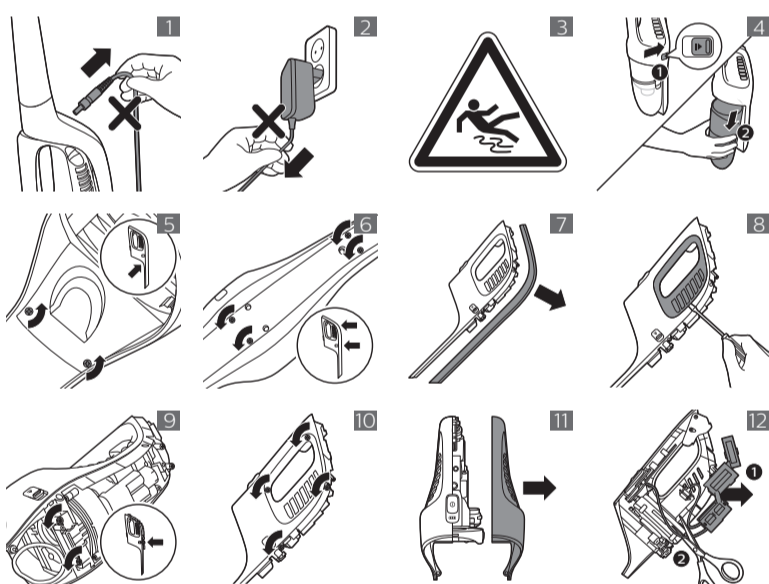




>75% recycled paper  
>75% papier recyclé

4222.003.4361.1 10/8/2017  
> 75% 循环再造纸



English

## Introduction

### Introduction

Congratulations on your purchase and welcome to Philips! To fully benefit from the support that Philips offers, register your product at [www.philips.com/welcome](http://www.philips.com/welcome).

### Important safety information

Read this important information carefully before you use the appliance and save it for future reference.

#### Danger

- Never vacuum up water or any other liquid. Never vacuum up flammable substances and do not vacuum up ashes until they are cold.
- Never immerse the appliance or the adapter in water or any other liquid, nor rinse it under the tap.

#### Warning

- Check if the voltage indicated on the adapter corresponds to the local mains voltage before you connect the appliance.
- Always check the appliance before you use it. Do not use the appliance if it is damaged, as this may cause injury. Always replace a damaged part with one of the original type.
- Do not use the appliance or the adapter if it is damaged.
- If the adapter is damaged, always have it replaced with one of the original type in order to avoid a hazard.
- Do not open the appliance to replace the rechargeable battery.
- The adapter contains a transformer. Do not cut off the adapter to replace it with another plug, as this causes a hazardous situation.
- To prevent damage, never put ethereal oils or similar substances in the water tank or let the appliance pick them up.
- Do not lift or tilt the nozzle when the water tank is assembled and full, as water may spray out of the water tank.
- This appliance is not intended for use by persons (including children) with reduced physical, sensory or mental capabilities, or lack of experience and knowledge, unless they have been given supervision or instruction concerning use of the appliance by a person responsible for their safety.
- Children should be supervised to ensure that they do not play with the appliance.
- Keep the appliance and its cord out of the reach of children.
- The plug must be removed from the socket-outlet before cleaning or maintaining the appliance.

#### Caution

- Only charge the appliance with the adapter supplied. During charging, the adapter feels warm to the touch. This is normal.
- Do not plug in, unplug or operate the appliance with wet hands.
- Do not unplug the appliance by pulling at the cord. Always unplug by pulling the small plug (Fig. 1) out of the appliance and the adapter out of the wall socket (Fig. 2).
- As this appliance uses water to clean, the floor may remain wet and slippery for a while (Fig. 3).
- To prevent damage, never put wax, oil, floor maintenance products or liquid floor cleaners that are not water-dilutable in the water tank.
- Do not mix different types of liquid floor cleaner. When you have used one liquid floor cleaner, first empty and rinse the water tank before you add another liquid floor cleaner to the water in the water tank.
- To prevent damage, do not use liquid floor cleaners that are not transparent or even milky.
- Never exceed the maximum quantities mentioned on the bottle when you use a liquid floor cleaner. Do not add more than a few drops to the water in the water tank, as this tank has a capacity of 200ml.
- Do not clean the metal wetting strip with a sharp object, as this may damage the strip. Only clean the wetting strip by rinsing it under the tap. Replace the wetting strip when you can no longer clean it.
- Replace the wetting strip only with an original strip. For ordering a new strip, see chapter 'Ordering accessories'.
- Clean the water tank according to the instructions. The water tank is not dishwasher-proof.
- Always switch off the appliance after use and when you charge it.
- Never block the exhaust air openings during vacuuming.
- Always use the vacuum cleaner with the filter unit assembled.
- Make sure that the appliance is installed with the wall fixture mounted to the wall, according to the instructions in the user manual.
- Be careful when you drill holes in the wall to attach the wall fixture, to avoid the risk of electric shock.

#### Electromagnetic fields (EMF)

This Philips appliance complies with all applicable standards and regulations regarding exposure to electromagnetic fields.

## Using the appliance

### Usage restrictions

- Only use the water tank on hard floors with a water-resistant top coat (such as linoleum, enameled tiles and varnished parquet) and stone floors (such as marble). If your floor has not been treated to make it water-resistant, check with the manufacturer if you can use water to clean it. Do not use the water tank on hard floors of which the water-resistant top coat is damaged.
- Only use the water tank on linoleum floors that are properly affixed to prevent linoleum from being drawn into the mopping nozzle.
- Do not use the water tank to clean carpets.
- Do not move the appliance with water tank assembled sideways, as this leaves water traces. Only move forwards and backwards.

**Note:** Runtime duration depends on power level used during cleaning.

### Mopping pad and wetting strip (FC6409, FC6408)

FC6408 comes with one wetting strip and two identical microfiber mopping pads.

FC6409 comes with two wetting strips and two different microfiber mopping pads.

- The wetting strip with the icon with two drops and the aqua-colored mopping pad with wide stripes are suitable for mopping tiled floors.
- The wetting strip with the icon with one drop and the light blue mopping pad with narrow stripes are suitable for mopping laminate and water-resistant parquet and wooden floors.

### Using liquid floor cleaner in the water tank

If you want to add a liquid floor cleaner to the water in the water tank, make sure that you use a low-foaming or non-foaming liquid floor cleaner that can be diluted in water. As the water tank has a capacity of 200ml, you only have to add a few drops of liquid floor cleaner to the water.

### Cleaning the water tank

To clean the water tank, mix one part vinegar with three parts water. Pour this mixture into the water tank and close the cap. Shake the water tank and put the water tank on a water-resistant surface. Leave the water-vinegar mixture in the water tank overnight. Then empty the water tank, rinse it thoroughly with fresh water, and use it normally again.

### Ordering accessories

To buy accessories or spare parts, visit [www.shop.philips.com/service](http://www.shop.philips.com/service) or go to your Philips dealer. You can also contact the Philips Consumer Care Center in your country (see the international warranty leaflet for contact details).

### Warranty and support

If you need information or support, please visit [www.philips.com/support](http://www.philips.com/support) or read the international warranty leaflet.

## Recycling

- Do not throw away the product with the normal household waste at the end of its life, but hand it in at an official collection point for recycling. By doing this, you help to preserve the environment.
- This product contains a built-in rechargeable battery which shall not be disposed of with normal household waste. We strongly advise you to take your product to an official collection point or a Philips service centre to have a professional remove the rechargeable battery.
- Follow your country's rules for the separate collection of electrical and electronic products and rechargeable batteries. Correct disposal helps prevent negative consequences for the environment and human health.

## Removing the rechargeable battery

Only remove the rechargeable battery when you discard the product. Before you remove the battery, make sure that the product is disconnected from the wall socket and that the battery is completely empty.

Take any necessary safety precautions when you handle tools to open the product and when you dispose of the rechargeable battery.

To remove the rechargeable battery, follow the instructions below.

- 1 Let the appliance run until it stops.
- 2 Remove the dust container and the cyclone from the handheld vacuum cleaner (Fig. 4).
- 3 Undo two screws on the inside of the handheld vacuum cleaner (Fig. 5).
- 4 Turn the handheld vacuum cleaner and remove four screws on the other side (Fig. 6).
- 5 Remove the back panel from the handheld vacuum cleaner (Fig. 7).
- 6 Insert a screwdriver and push it down to remove the panel on the left side of the appliance (Fig. 8).
- 7 Remove two screws from the bottom (Fig. 9).
- 8 Remove four screws on the left side of the appliance (Fig. 10).
- 9 Remove the left housing part (Fig. 11).
- 10 Take out the rechargeable battery and cut the wires connected to it one by one (Fig. 12).

## Troubleshooting

This chapter summarizes the most common problems you could encounter with the appliance. If you are unable to solve the problem with the information below, visit [www.philips.com/support](http://www.philips.com/support) for a list of frequently asked questions or contact the Consumer Care Center in your country.

| Problem   | Possible cause   | Solution  |
|---|--|---|
| The appliance does not work when I push the button.             | The battery light flashes fast because the batteries are low.  | To charge the batteries, insert the small plug into the socket on the appliance and insert the adapter into a wall socket.  |
|   | You cannot use the appliance because the appliance is still charging.  | You have to remove the small plug from the socket on the appliance before you can switch on the appliance.  |
|   | You have to press two buttons.   | First press the on/off button to switch on the appliance. Then press the MAX button to get maximum suction power.   |
| The appliance has a lower suction power than usual.             | The filter and the cyclone are dirty.  | Clean the filter and the cyclone.   |
|   | You have not connected the dust bucket, the dust separator and the cyclone properly. Incorrect assembly of these parts causes air leakage, which leads to loss of suction power. | Connect the dust bucket, the dust separator and the cyclone properly.   |
|   | The filter is dirty.   | Clean the filter.   |
| The brush does not turn anymore.                                | The brush encounters too much resistance.  | Clean the brush with a pair of scissors or by hand. If you clean the roller brush by hand, pull the hairs or threads from the widest side to the narrowest side of the roller brush (see user manual).  |
|   | You switched on the appliance by pressing the on button on the handheld vacuum cleaner.  | Switch off the appliance by pressing the on button on the handheld vacuum cleaner again. Then switch it on again by pressing the on button on the stick.  |
|   | The water flow from the water tank is reduced  | The wetting strip is blocked by excessive residue.  |
|   | The microfiber mopping pad is not placed correctly. It covers the wetting strip and blocks the water flow from the wetting strip.  | Make sure that the Velcro strips on the mopping pad and the Velcro strips on the water tank are perfectly aligned. Also make sure the striped side of the mopping pad is facing outwards, away from the bottom of the water tank.   |
|   | The water tank is empty or nearly empty.   | Refill the water tank.  |
|   | You use a microfiber mopping pad that is not supplied by Philips.  | Only use an original Philips microfiber mopping pad. You can buy these mopping pads in the online Philips shop at <a href="http://www.shop.philips.com/service">www.shop.philips.com/service</a> or at your Philips dealer.   |
| The output of water is faster and larger than normal.           | If the water tank produces an uncontrolled and too large amount of water, the cap of the tank is probably not closed properly.   | Check the cap and make sure it is fully and properly closed.  |
|   | The strip is not placed properly in the bottom of the water tank.  | Check the strip and make sure that it is fitted properly in the bottom plate of the water tank.   |
|   | You added too much liquid cleaner to the water.  | Use only a few drops or use a cleaner that foams less.  |
| FC6409: The mini turbo brush does not function properly.        | The roller brush is blocked.   | Remove hairs from the brush with a pair of scissors (see user manual).  |
|   | The roller brush is blocked by fabric or surfaces during cleaning.   | Keep the mini turbo brush aligned with the surface and do not push the turbo brush into soft surfaces.  |
|   | The mini turbo brush is not fully closed.  | Make sure that the top and bottom parts of the mini turbo brush are properly connected and there is no gap between the two parts. Check if the locking ring is in closed position (see user manual).  |
|   | The connector between the mini turbo brush and the appliance is not placed properly.   | Make sure that the connector is pushed into the mini turbo brush as far as it goes.   |
| FC6409: I cannot connect the mini turbo brush to the appliance. | The connector between the mini turbo brush and the appliance is not present.   | You can remove the connector from the mini turbo brush, for instance for thorough cleaning, but you cannot connect the mini turbo brush directly to the appliance without the connector. To reassemble the mini turbo brush, first push the connector into the mini turbo brush as far as it goes and then push the connector into the nozzle of the handheld vacuum cleaner. |

简体中文

## 介绍

### 简介

感谢您的惠顾，欢迎光临飞利浦！为了让您能充分享受飞利浦提供的支持，请在 [www.philips.com/welcome](http://www.philips.com/welcome) 上注册您的产品。

### 重要安全信息

使用产品之前，请仔细阅读本重要信息，并妥善保管以供日后参考。

## 危险

- 切勿吸入水或其他任何液体。切勿吸入易燃物质，也不要吸入未冷却的灰烬。
- 切勿将本产品或适配器浸入水或其他任何液体中，也不要将它们放在水龙头下冲洗。

## 警告

- 在将本产品连接电源前，务必检查当地的电压是否与电源适配器所标电压一致。
- 使用前，请务必检查产品。请勿使用损坏的产品，否则可能对人体造成伤害。请务必用原装型号更换损坏的部件。
- 如果产品或适配器受损，请停止使用。
- 如果适配器已损坏，则务必更换原装型号适配器，以免发生危险。
- 切勿拆开本产品更换充电电池。
- 适配器中包含一个变压器。请勿剪下适配器更换其他插头，否则将导致严重后果。
- 为防止受损，切勿将香精油或类似物质放入水箱中，也不要用品清扫它们。
- 组装水箱及水箱已满时，请勿提起或倾斜吸嘴，否则水可能会从水箱中喷出。
- 产品不建议由有肢体、感官或精神能力缺陷或缺乏使用经验和知识的人（包括儿童）使用，除非有负责他们安全的人对他们进行与产品使用有关的监督或指导。
- 请照顾好儿童，本产品不能用于玩耍。
- 将产品及其线缆放在儿童接触不到的地方。
- 清洁或维护产品之前，必须先从未插座拔掉插头。

## 警告

- 只能用随附的适配器为本产品充电。充电期间，适配器会有微热。这是正常的。
- 切勿用湿手插入、拔下或操作本产品。
- 切勿通过拉动线缆拔下产品插头。要拔下电源插头，请务必将充电插头（图 1）拔出本产品，并将适配器拔出电源插座（图 2）。
- 因本产品使用水来清洁，清洁后的一段时间内（图 3）地板上会有些湿和打滑。
- 为防止受损，切勿将蜡、油、地板维护产品或非水稀释性液体地板清洁剂倒入水箱中。
- 切勿混合不同类型的液体地板清洁剂。使用一种地板清洁剂后，需要先倒空并冲洗水箱，然后才能在水箱的水中加入另一种液体地板清洁剂。
- 为防止受损，请不要使用非透明或乳状的液体地板清洁剂。
- 使用液体地板清洁剂时，切勿超过瓶子上标示的最大量。由于水箱的容量为 200 毫升，您只需加入几滴清洁剂即可。
- 请勿用尖锐物体清洁湿的金属条，否则可能造成损坏。只能在自来水下清洁湿的金属条。无法再清洁干净时，请更换湿的金属条。
- 只能使用原装金属条更换湿的金属条。要订购新的金属条，请参阅“订购附件”一章。
- 根据说明清洁水箱。水箱不可用洗碗机清洗。
- 使用后和充电时，请务必关闭产品。
- 吸尘时切勿阻塞排气口。
- 使用吸尘器时，请确保装上过滤部件。
- 请确保按照用户手册中的说明，用壁装装置将产品安装到墙上。
- 请注意，在墙上钻孔安装壁装装置时，请避免触电风险。

## 电磁场 (EMF)

本飞利浦产品符合所有有关暴露于电磁场的适用标准和法规。

## 使用本产品

### 使用限制

- 仅在具有防水表面涂层的硬地板（例如油毡地板、瓷板和刷漆木地板）和石材地板（例如大理石）上使用水箱。如果您的地板未经处理，且不具有防水作用，请咨询制造商，了解是否可以用水清洁。请勿在防水表面涂层损坏的硬地板上使用水箱。
- 仅在正确贴合的油毡地板上使用水箱，以防止油毡吸入拖地吸嘴中。
- 请勿使用水箱清洁地毯。
- 请勿侧向移动装有水箱的产品，这样会留下水痕。只能前后移动。

**注意：**运行时持续时间取决于清洁期间所使用的功率大小。

### 清洁布和湿的金属条 (FC6409, FC6408)

FC6408 随附一个湿的金属条和两个相同的微纤维清洁布。

FC6409 随附两个湿的金属条和两个不同的微纤维清洁布。

- 带两滴水图标的湿金属条和草绿色宽条纹清洁布适合清洁瓷砖地板。
- 带一滴水图标的湿金属条和浅蓝色窄条纹清洁布适合清洁层压防水镶木地板和木地板。

### 在水箱中使用液体地板清洁剂

如果您要在水箱的水中加入液体地板清洁剂，请确保使用可在水中稀释的低泡沫或无泡沫液体地板清洁剂。由于水箱容量为 200 毫升，您只需在水中加入几滴液体地板清洁剂即可。

### 清洁水箱

如需清洁水箱，请将一份醋与三份水混合。将混合液倒入水箱中，盖上盖子。摇晃水箱，然后将水箱放在防水表面上。将水醋混合液在水箱中存放一夜。然后，倒空水箱，用清水彻底冲洗后再正常使用。

### 订购配件

要购买附件或备件，请访问 [www.shop.philips.com/service](http://www.shop.philips.com/service) 或联系您的飞利浦经销商。您还可以联系所在国家/地区的飞利浦客户服务中心（请参阅全球保修卡了解详细联系信息）。

### 保修和支持

如需信息或支持，请访问 [www.philips.com/support](http://www.philips.com/support) 或阅读国际保修卡。

### 回收

- 弃置本产品时，请不要将其与一般生活垃圾放在一起，应将其交给政府指定的回收中心。这样做将有利于环保。
- 此产品包含内置充电电池；请勿将充电电池与一般生活垃圾一起弃置。强烈建议您将自己的产品送到官方收集点或飞利浦服务中心，让专业人士移除充电电池。
- 遵循您的国家/地区有关分类回收电子电气产品和充电电池的规定。正确弃置产品有助于避免对环境对人类健康造成不良后果。

### 拆下充电电池

**仅在丢弃本产品时方可取出充电电池。卸下电池之前，请确保本产品与电源断开连接并且电池电量已耗尽。**

**当您使用工具打开本产品时以及在您弃置充电电池时，请采取必要的安全保护措施。**

按照以下步骤拆下充电电池。

- 1 让产品运转，直到停止为止。
- 2 从手持式吸尘器（图 4）上卸下集尘桶和旋风滤网。
- 3 拧下手持式吸尘器（图 5）内侧的 2 颗螺丝。
- 4 将手持式吸尘器翻过来，并卸下另一侧（图 6）上的 4 颗螺丝。
- 5 卸下手持式吸尘器（图 7）的后面板。
- 6 插入螺丝刀并将其向下推以取下产品（图 8）左侧的面板。
- 7 从底部（图 9）卸下 2 个螺丝。
- 8 取下产品（图 10）左侧的 4 颗螺丝。
- 9 取下外壳（图 11）的左半边部分。
- 10 取出充电电池，并逐一（图 12）切断连接充电电池的电线。

| 部件名称   | 产品中有害物质的名称及含量 |        |        |               |            |              |
|--------|---------------|--------|--------|---------------|------------|--------------|
|        | 有害物质          |        |        |               |            |              |
|        | 铅 (Pb)        | 汞 (Hg) | 镉 (Cd) | 六价铬 (Cr (VI)) | 多溴联苯 (PBB) | 多溴二苯醚 (PBDE) |
| 充电式吸尘器 | X             | O      | O      | O             | O          | O            |
| 电源适配器  | X             | O      | O      | O             | O          | O            |

本表格依据 SJ/T 11364 的规定编制。  
O: 表示该有害物质在该部件所有均质材料中的含量均在 GB/T 26572 规定的限量要求以下。  
X: 表示该有害物质至少在该部件的某一均质材料中的含量超出 GB/T 26572 规定的限量要求。

- 该表格中所显示的“有害物质”在产品正常使用情况下不会对人身和环境产生任何伤害。
- 该表格中所显示的“有害物质”及其存在的部件向消费者和回收处理从业者提供相关物质的存在信息，有助于产品废弃时的妥善处理。

## 故障种类和处理方法

本章归纳了使用本产品时最常见的一些问题。如果您无法根据以下信息解决问题，请访问 [www.philips.com/support](http://www.philips.com/support) 查阅常见问题列表，或联系您所在国家/地区的客户服务中心。

| 问题                     | 可能的原因  | 解决方法   |
|------------------------|--|--|
| 按下按钮时，产品不工作。           | 由于电池电量低，电池指示灯快速闪烁。                                 | 要为电池充电，请将小插头插入产品的电源插孔，然后将适配器插入插座。  |
|                        | 您不能使用正在充电的产品。                                      | 您必须将小插头从产品的电源插孔拔出，然后才能开启产品。  |
|                        | 您必须按两个按钮。  | 首先按开/关按钮开启产品。然后按 MAX（最大）按钮获得最大吸力。  |
| 本产品的吸力比以往要小。           | 过滤网和旋风滤网不干净。                                       | 清洁过滤网和旋风滤网。  |
|                        | 您没有正确连接集尘桶、灰尘分离器 and 旋风滤网。这些部件安装不正确会导致空气泄露，致使吸力损失。 | 正确连接集尘桶、灰尘分离器 and 旋风滤网。  |
| 灰尘从产品中溢出。              | 过滤网变脏。   | 清洁过滤网。   |
| 滚刷不再旋转。                | 滚刷遇到的阻力太大。   | 用剪刀或用手清洁滚刷。如果用手清洁滚刷，请将毛发或线头从滚刷的最宽侧拉到最窄侧（请参见用户手册）。  |
|                        | 通过手持式吸尘器的开关按钮来开启产品。                                | 再次按下手持式吸尘器的开关按钮来关闭产品。然后通过把杆上的开关按钮来再次启动产品。  |
| 水箱的水流量减少               | 湿的金属条被过多的残留物阻塞。                                    | 卸下湿的金属条，并进行清洁。   |
|                        | 微纤维清洁布未放好。它挡住了湿的金属条，阻塞了其中的水流。                      | 确保清洁布上的尼龙搭扣与水箱上的尼龙搭扣完全对齐。同时，确保清洁布的尼龙搭扣侧朝外，远离水箱底部。  |
|                        | 水箱为空或几乎无水。   | 为水箱加水。   |
|                        | 您使用了非飞利浦提供的微纤维清洁布。                                 | 仅限于使用原装飞利浦微纤维清洁布。您可以在飞利浦网上商城 <a href="http://www.shop.philips.com/service">www.shop.philips.com/service</a> 或飞利浦经销商处购买这些清洁布。 |
| 出水速度比通常更快，量更大。         | 如果水箱出水速度不可控且水量过大，则可能是水箱盖没盖好。                       | 检查水箱盖并确保其已完全闭合盖好。  |
|                        | 金属条未正确置于水箱底部。                                      | 检查金属条并确保其已正确安装在水箱底板上。  |
| 当使用水箱时，地板出现干纹。         | 向水中加入了过多液体清洁剂。                                     | 只需使用几滴或使用泡沫较少的清洁剂。   |
| FC6409：迷你涡轮刷无法正常工作。    | 滚刷阻塞。  | 用剪刀清除刷子上的毛发（请参见用户手册）。  |
|                        | 清洁过程中，滚刷被织物或表面阻塞。                                  | 保持迷你涡轮刷与表面对齐，且请勿将涡轮刷推入软质表面。  |
|                        | 迷你涡轮刷未完全关闭。  | 确保迷你涡轮刷的顶部和底部正确连接，两部分之间没有间隙。检查闭锁环是否处于关闭位置（请参见用户手册）。  |
|                        | 迷你涡轮刷和本产品之间的连接器未正确放置。                              | 确保连接器尽可能深地推入迷你涡轮刷。   |
| FC6409：无法将迷你涡轮刷连接到本产品。 | 迷你涡轮刷和本产品之间的连接器不存在。                                | 可从迷你涡轮刷卸下连接器，例如为了彻底清洁，但是无法在没有连接器的情况下将迷你涡轮刷直接连接到本产品。要重新组装迷你涡轮刷，首先将连接器尽可能深地推入迷你涡轮刷，然后将连接器推入手持式吸尘器的吸嘴。                          |

**PHILIPS**

产品：飞利浦无绳湿拖真空吸尘器  
型号：FC6409  
额定电压：220V~  
额定频率：50Hz  
额定输入电流：0.6A  
生产日期：请见产品本体  
产地：中国广东东莞

飞利浦（中国）投资有限公司  
上海市天目西路218号1602-1605  
全国顾客服务热线：4008 800 008

本产品根据国标 GB4706.1-2005, GB4706.7-2014, GB4343.1-2009及 GB17625.1-2012制造

**PHILIPS**

产品：飞利浦无绳湿拖真空吸尘器  
型号：FC6408  
额定电压：220V~  
额定频率：50Hz  
额定输入电流：0.6A  
生产日期：请见产品本体  
产地：中国广东东莞

飞利浦（中国）投资有限公司  
上海市天目西路218号1602-1605  
全国顾客服务热线：4008 800 008

本产品根据国标 GB4706.1-2005, GB4706.7-2014, GB4343.1-2009及 GB17625.1-2012制造

**PHILIPS**

产品：飞利浦无绳湿拖真空吸尘器  
型号：FC6407  
额定电压：220V~  
额定频率：50Hz  
额定输入电流：0.6A  
生产日期：请见产品本体  
产地：中国广东东莞

飞利浦（中国）投资有限公司  
上海市天目西路218号1602-1605  
全国顾客服务热线：4008 800 008

本产品根据国标 GB4706.1-2005, GB4706.7-2014, GB4343.1-2009及 GB17625.1-2012制造

**PHILIPS**

产品：飞利浦无绳湿拖真空吸尘器  
型号：FC6405  
额定电压：220V~  
额定频率：50Hz  
额定输入电流：0.6A  
生产日期：请见产品本体  
产地：中国广东东莞

飞利浦（中国）投资有限公司  
上海市天目西路218号1602-1605  
全国顾客服务热线：4008 800 008

本产品根据国标 GB4706.1-2005, GB4706.7-2014, GB4343.1-2009及 GB17625.1-2012制造

保留备用

发行日期：10/8/2017