

Always here to help you / 始终如一地为您提供帮助

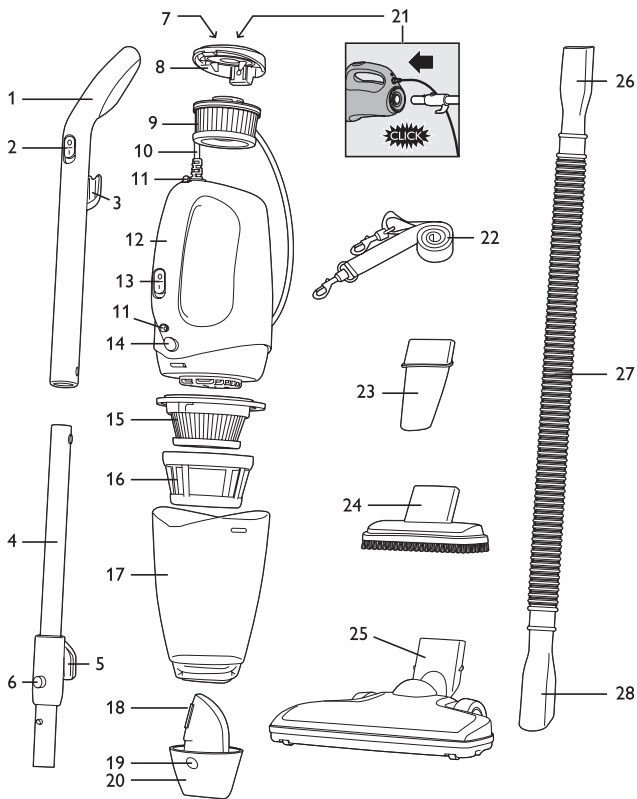
Register your product and get support at / 请登录以下网址并得到相应的帮助
www.philips.com/welcome

FC6132
FC6130



PHILIPS





ENGLISH 6

简体中文 15

Introduction

Congratulations on your purchase and welcome to Philips! To benefit fully from the support that Philips offers, register your product at www.philips.com/welcome.

General description (Fig. 1)

- 1 Upper stick part with handle (FC6132)
- 2 On/off slide on stick (FC6132)
- 3 Cord winding hook (FC6132)
- 4 Lower stick part (FC6132)
- 5 Cord winding hook (FC6132)
- 6 Stick release button (FC6132)
- 7 Clean Air HEPA filter cover
- 8 Exhaust air openings
- 9 Clean Air HEPA filter
- 10 Mains cord
- 11 Shoulder strap attachment points
- 12 Handle
- 13 On/off slide on vacuum cleaner
- 14 Dust compartment release button
- 15 Inner filter
- 16 Outer filter
- 17 Dust compartment
- 18 Internal air inlet unit
- 19 Nosepiece release button
- 20 Detachable nosepiece
- 21 Attachment point for stick (FC6132)
- 22 Shoulder strap + clasps (FC6130)
- 23 Crevice tool
- 24 Brush tool
- 25 Floor nozzle (FC6132)
- 26 Appliance end of hose (FC6130)
- 27 Hose (FC6130)
- 28 Attachment end of hose (FC6130)

Important

Read this user manual carefully before you use the appliance and save it for future reference.

Danger

- Never immerse the appliance in water or any other liquid, nor rinse it under the tap.
- Never vacuum up water or any other liquid, flammable substances or hot ashes.

Warning

- Check if the voltage indicated on the appliance corresponds to the local mains voltage before you connect the appliance.
- Do not use the appliance if the plug, the mains cord or other parts are damaged.
- If the mains cord is damaged, you must have it replaced by Philips, a service centre authorised by Philips or similarly qualified persons in order to avoid a hazard.
- This appliance is not intended for use by persons (including children) with reduced physical, sensory or mental capabilities, or lack of experience and knowledge, unless they have been given supervision or instruction concerning use of the appliance by a person responsible for their safety.
- Care must be taken to ensure that children do not play with the appliance.
- Keep the appliance and its cord out of the reach of children.
- The plug must be removed from the socket-outlet before you clean or maintain the appliance.

Caution

- Always switch off the appliance after use.
- Never block the exhaust air openings during vacuuming.
- Always use the vacuum cleaner with the filter unit, the dust compartment and the Clean Air HEPA filter assembled.
- Always switch off the appliance before you connect or disconnect accessories.

Electromagnetic fields (EMF)

This Philips appliance complies with all applicable standards and regulations regarding electromagnetic fields.

Preparing for use

The appliance comes with a shoulder strap and flexible hose (FC6130) or with a stick and floor nozzle (FC6132) for extra convenience during vacuum cleaning.

The appliance also comes with a brush tool to clean delicate surfaces and a crevice tool to clean the hard-to-reach places.

Attaching the shoulder strap (FC6130 only)

- 1** To attach the shoulder strap, connect the clasps to the attachment points on the appliance.

Attaching the stick and the floor nozzle (FC6132 only)

- 1** To assemble the stick, connect the lower stick part to the upper stick part ('click') (Fig. 2).

Note: You cannot disassemble the stick once you have assembled it.

- 2** Insert the stick into the attachment point for the stick at the back of the appliance ('click') (Fig. 3).
 - Make sure the ridge on the stick aligns with the attachment point on the appliance when the stick is inserted.

- 3** To detach the stick from the appliance, press the stick release button with one hand (1) and pull the stick out of the appliance with the other hand (2) (Fig. 4).

- 4** Attach the floor nozzle to the nosepiece (Fig. 5).

You can use the floor nozzle to clean hard floors and carpets.

The floor nozzle is equipped with a fluff collector that removes hair and fluff.

- 5** Put the plug in the wall socket.

Brush tool and crevice tool

You can use the brush tool to clean delicate surfaces.
With the crevice tool, you can quickly and conveniently clean hard-to-reach places.

- 1 Attach the brush tool or the crevice tool to the nosepiece of the appliance (Fig. 6).

Hose (FC6130 only)

This appliance comes with a hose for extended reach during vacuum cleaning.

- 1 Insert the appliance end of the hose into the nosepiece of the appliance (Fig. 7).
- 2 Attach the brush tool or the crevice tool to the attachment end of the hose for extended reach during vacuum cleaning (Fig. 8).

Using the appliance

Always switch off the appliance before you connect or disconnect accessories.

- 1 Put the plug in the wall socket.
- 2 Push the on/off slide on the vacuum cleaner or on the stick (FC6132 only) forwards to switch on the appliance (Fig. 9).
- 3 Push the on/off slide on the vacuum cleaner or on the stick (FC6132 only) backwards to switch off the appliance (Fig. 10).

Cleaning and maintenance

Never immerse the appliance in water or any other liquid, nor rinse it under the tap.

- 1 Remove the plug from the wall socket before you clean the appliance.
- 2 Clean the appliance with a damp cloth.

Emptying the dust compartment quickly

Make sure that you empty the dust compartment regularly to optimise the performance of the appliance.

Always unplug the appliance before you empty the dust compartment.

- 1** Press the nosepiece release button (1) and remove the nosepiece from the appliance (2) (Fig. 11).
- 2** Empty the contents of the dust compartment into a dustbin (Fig. 12).

Tip: Alternatively, you can use a normal vacuum cleaner to vacuum the contents out of the dust compartment.

- 3** Push the nosepiece back onto the appliance ('click') (Fig. 13).

Cleaning the dust compartment thoroughly

- 1** Press the dust compartment release button (1) and remove the dust compartment from the appliance (2) (Fig. 14).
- 2** Pull the filter unit out of the dust compartment (Fig. 15).
- 3** If necessary, clean the filter unit. See section 'Cleaning the filter unit'.
- 4** Empty the dust compartment over a dustbin (Fig. 16).
- 5** If necessary, clean the dust compartment with a damp cloth.
- 6** Place the filter unit back into the dust compartment (Fig. 17).
- 7** To reattach the dust compartment, align the slot on the dust compartment with the projection on the appliance. First attach the bottom of the dust compartment. Then push the top of the dust compartment towards the appliance until it locks into place ('click') (Fig. 18).

Cleaning the filter unit

- 1 Press the dust compartment release button (1) and remove the dust compartment from the appliance (2) (Fig. 14).
- 2 Pull the filter unit out of the dust compartment (Fig. 15).
- 3 To detach the outer filter from the inner filter, turn the filter outer filter anticlockwise (1) and pull it off the inner filter (2) (Fig. 19).
- 4 Clean the inner filter and the outer filter with a brush. If the filters are very dirty, clean them with a normal vacuum cleaner (Fig. 20).
- 5 Put the outer filter back onto the inner filter (1) and turn the outer filter clockwise to lock it (2) (Fig. 21).
- 6 Place the filter unit back into the dust compartment (Fig. 17).
- 7 To reattach the dust compartment, align the slot on the dust compartment with the projection on the appliance. First attach the bottom of the dust compartment. Then push the top of the dust compartment towards the appliance until it locks into place ('click') (Fig. 18).

Storage

- 1 Wind the cord round the body of the appliance (Fig. 22).
- 2 Fix the cord with the cord clip.

Replacement

Clean Air HEPA filter

The appliance is equipped with the special Clean Air HEPA filter. This filter removes small particles from the outlet air. This not only includes normal house dust, but also harmful microscopic vermin such as house dust mites and their excrements, which are well-known causes of respiratory allergies.

- 1 Press the button to release the Clean Air HEPA filter cover (1) and remove the cover (2) (Fig. 23).

12 ENGLISH

- 2 Remove the old Clean Air HEPA filter and dispose of it (Fig. 24).
- 3 Put a new Clean Air HEPA filter in the HEPA filter compartment (Fig. 25).
- 4 Reattach the Clean Air HEPA filter cover ('click') (Fig. 26).

Replacement filters

New inner filters are available under service code: 4222 459 45354. Contact your Philips dealer or the Philips Consumer Care Centre in your country.

New Clean Air HEPA outlet filters are available under service code: 4222 459 45355. Contact your Philips dealer or the Philips Consumer Care Centre in your country.

Recycling

Do not throw away the product with the normal household waste at the end of its life, but hand it in at an official collection point for recycling. By doing this, you help to preserve the environment.

Guarantee and support

If you need information or support, please visit **www.philips.com/support** or read the separate worldwide guarantee leaflet.

Troubleshooting

This chapter summarises the most common problems you could encounter with the appliance. If you are unable to solve the problem with the information below, visit **www.philips.com/support** for a list of frequently asked questions or contact the Consumer Care Centre in your country.

Problem	Solution
The vacuum cleaner does not work.	Make sure that you have inserted the plug properly into the wall socket and have switched on the appliance.
	Take the appliance to your dealer or a service centre authorised by Philips for examination.
The vacuum cleaner does not vacuum properly.	Make sure that the dust compartment is attached properly to the appliance (see chapter 'Cleaning and maintenance').
	<p>Check if the dust compartment is full. If it is full, empty it (see chapter 'Cleaning and maintenance').</p> <p>Check if the filter unit is clogged. If it is clogged, remove the filter unit and clean the inner and outer filter (see chapter 'Cleaning and maintenance').</p>
Dust escapes from the vacuum cleaner.	Check if the dust compartment is full. If it is full, empty it (see chapter 'Cleaning and maintenance').
	Make sure that the filter unit is placed properly in the dust compartment (see chapter 'Cleaning and maintenance').
	Make sure that the dust compartment is attached properly to the appliance (see chapter 'Cleaning and maintenance').

Problem	Solution
The vacuum cleaner does not work properly when the floor nozzle (FC6132), the hose (FC6130), the brush tool or the crevice tool is attached.	Check if the floor nozzle, the hose, the brush tool or the crevice tool is blocked. If this is the case, remove the obstruction.
	Check if the dust compartment is full. If it is full, empty it (see chapter 'Cleaning and maintenance'). Check if the filter unit is clogged. If it is clogged, remove the filter unit and clean the inner and outer filter (see chapter 'Cleaning and maintenance').

简介

感谢您的惠顾，欢迎光临飞利浦！为了您能充分享受飞利浦提供的支持，请在 www.philips.com/welcome 上注册您的产品。

基本说明 (图 1)

- 1 带握把的把杆上半部分 (FC6132)
- 2 把杆上的开关滑钮 (FC6132)
- 3 绕线挂钩 (FC6132)
- 4 把杆下半部分 (FC6132)
- 5 绕线挂钩 (FC6132)
- 6 把杆拆卸按钮 (FC6132)
- 7 超洁空气 HEPA 滤网罩
- 8 排气口
- 9 超洁空气 HEPA 过滤网
- 10 电源线
- 11 肩带连接点
- 12 手柄
- 13 真空吸尘器上的开关滑钮
- 14 集尘桶拆卸按钮
- 15 内层过滤网
- 16 外层过滤网
- 17 集尘桶
- 18 内部进风组件
- 19 吸嘴拆卸按钮
- 20 可拆卸吸嘴口
- 21 把杆连接点 (FC6132)
- 22 肩带 + 搭扣 (FC6130)
- 23 缝隙吸嘴
- 24 毛刷
- 25 地板吸嘴 (FC6132)
- 26 软管连接吸尘器的一端 (FC6130)
- 27 软管 (FC6130)
- 28 软管连接附件的一端 (FC6130)

注意事项

使用本产品之前，请仔细阅读本使用说明书，并妥善保管以备日后参考。

危险

- 不要将本产品浸入水或其它液体中，也不要在水龙头下冲洗。
- 切勿吸入水或其它液体、易燃物质或热灰。

警告

- 在将产品连接电源之前，请先检查产品所标电压与当地的供电电压是否相符。
- 如果插头、电源线或其它部件受损，则不要使用产品。
- 如果电源线损坏，为了避免危险，必须由飞利浦、飞利浦特约维修中心或有同等维修资格的专业人员来进行更换。
- 产品不建议由有肢体、感官或精神能力缺陷或缺少使用经验和知识的人（包括儿童）使用，除非有负责他们安全的人对他们进行与产品使用有关的监督或指导。
- 请务必小心，确保儿童不玩耍本产品。
- 将产品及其线缆放在儿童接触不到的地方。
- 清洁或维护产品之前，必须先从插座拔掉插头。

警告

- 使用后，务必关闭产品电源。
- 吸尘时切勿阻塞排气口。

- 使用吸尘器时一定要安装滤网部件、集尘桶和超洁空气 HEPA 过滤网。
- 在连接或拆开附件之前，请务必首先切断产品电源。

电磁场 (EMF)

本飞利浦产品符合所有有关电磁场的适用标准和法规。

使用准备

产品随附有肩带和柔韧软管 (FC6130)，或者随附把杆和地板吸嘴 (FC6132)，吸尘更便捷。

产品还附带了用于清洁细致表面的毛刷，以及用于清洁难以触及部位的缝隙吸嘴。

肩带安装 (仅限于 FC6130)

- 1 要安装肩带，请将搭扣连接到产品上的连接点。

把杆和地板吸嘴安装 (仅限于 FC6132)

- 1 要安装把杆，请将把杆下半部分与把杆上半部分相连（可听到“咔哒”声）。（图 2）

注意：把杆一旦组装，就不能拆卸。

- 2 将把杆插入吸尘器背面的把杆连接点（可听到“咔哒”声）。（图 3）

- 插入把杆时，确保把杆上的突出段与吸尘器上的凹陷段吻合。

- 3 要从吸尘器上拆下把杆，请用一只手按把杆拆卸按钮 (1)，用另一只手将把杆从吸尘器中拉出 (2)。（图 4）

- 4 将地板吸嘴安装到吸嘴上。（图 5）

您可以使用地板吸嘴来清洁硬质地面和地毯。

地板吸嘴装有一个可清除毛发和绒毛的绒毛收集器。

- 5 将电源插头接入插座。

18 简体中文

毛刷和縫隙工具

您可以使用毛刷清潔細致表面。

使用縫隙吸嘴，您可以迅速方便地清潔難以觸及的地方。

- 1 將毛刷或縫隙吸嘴安裝到吸塵器的吸嘴上。(圖 6)

軟管 (僅限於 FC6130)

本產品隨附有軟管，吸塵時可以利用它來加大接觸範圍。

- 1 將軟管連接吸塵器的一端插入吸塵器的吸嘴。(圖 7)
- 2 將毛刷或縫隙吸嘴連接到軟管的連接端，以便在吸塵期間加大接觸範圍。(圖 8)

使用本產品

在連接或拆開附件之前，請務必首先切斷產品電源。

- 1 將電源插頭接入插座。
- 2 向前推吸塵器或把杆 (僅限於 FC6132) 上的開關滑鈕可打開吸塵器。(圖 9)
- 3 向后推吸塵器或把杆 (僅限於 FC6132) 上的開關滑鈕可關閉吸塵器。(圖 10)

清潔和保養

不要將本產品浸入水或其它液體中，也不要在水龍頭下沖洗。

- 1 清潔本產品之前，務必將插頭從牆上的插座中拔出。
- 2 用濕布擦拭本產品。

快速倒空集塵桶

請確保定期倒空集塵桶，以使產品達到最佳性能。

倒空集塵桶之前，切記拔下吸塵器的電源插頭。

- 1 按吸嘴拆卸鈕 (1)，將吸嘴從吸塵器上卸下 (2) (圖 11)。

2 将集尘桶中的尘垢倒入垃圾桶。(图 12)

提示：此外，您也可以使用普通的吸尘器将集尘桶中的尘垢吸出。

3 将吸嘴推回到产品上（“咔哒”一声）。(图 13)

彻底清洁集尘桶

1 按集尘桶拆卸按钮 (1)，将集尘桶从吸尘器上卸下 (2)。(图 14)

2 从集尘桶中取出滤网部件。(图 15)

3 必要时，应清洁滤网部件。见“清洁滤网部件”部分。

4 在垃圾桶上方倒空集尘桶。(图 16)

5 如果必要，可用湿布清洁集尘桶。

6 将过滤网架重新装回集尘桶。(图 17)

7 要重新安装集尘桶，请将集尘桶的槽与吸尘器的突出部分对齐。首先连接集尘桶的底部，然后将集尘桶的顶部推向吸尘器，直到其锁定到位（“咔哒”一声）。(图 18)

清洁过滤器

1 按集尘桶拆卸按钮 (1)，将集尘桶从吸尘器上卸下 (2)。(图 14)

2 从集尘桶中取出滤网部件。(图 15)

3 要从内层过滤网上卸下外层过滤网，请逆时针旋转外层过滤网 (1)，将其从内层过滤网上取下 (2)。(图 19)

4 用刷子清洁内层过滤网和外层过滤网。如果滤网很脏，可用普通的吸尘器进行清洁。(图 20)

5 将外层过滤网放回到内层过滤网上 (1)，然后顺时针旋转外层过滤网将其锁定 (2)。(图 21)

6 将过滤网架重新装回集尘桶。(图 17)

7 要重新安装集尘桶，请将集尘桶的槽与吸尘器的突出部分对齐。首先连接集尘桶的底部，然后将集尘桶的顶部推向吸尘器，直到其锁定到位（“咔哒”一声）。(图 18)

存储

- 1 将电线缠绕在产品的机身上。(图 22)
- 2 使用线夹固定电线。

更换

超洁空气 HEPA 过滤网

本产品配有特制的超洁空气 HEPA 过滤网。此过滤网可滤除排出空气中的微小颗粒。这不仅可去除普通的居家灰尘，还能去除有害的微小寄生虫，如尘螨及其排泄物，这是众所周知的呼吸道过敏源。

- 1 按相应按钮释放超洁空气 HEPA 滤网罩 (1)，将滤网罩取下 (2)。(图 23)
- 2 卸下并弃置废旧的超洁空气 HEPA 过滤网。(图 24)
- 3 在滤网架上安装新的超洁空气 HEPA 过滤网。(图 25)
- 4 重新安装超洁空气 HEPA 滤网罩 (“咔哒”一声)。(图 26)

替换滤网

新内层过滤网的服务码为：4222 459 45354。请与您所在地的飞利浦经销商或飞利浦顾客服务中心联系。

新超洁空气 HEPA 外层过滤网的服务码为：4222 459 45355。请与您所在地的飞利浦经销商或飞利浦顾客服务中心联系。

回收

弃置产品时，请不要将其与一般生活垃圾堆放在一起；应将其交给官方指定的回收点。这样做有利于环保。

保修和支持

如需信息或支持，请访问 www.philips.com/support 或阅读单独的全球保修卡。

故障种类和处理方法

本章归纳了使用本产品时最常见的一些问题。如果您无法根据以下信息解决问题，请访问 www.philips.com/support 查阅常见问题列表，或联系您所在国家/地区的客户服务中心。

问题

解决方法

吸尘器不工作

确保已将插头正确地插入电源插座，并已打开吸尘器。

请将本产品送往当地的飞利浦经销商，或经飞利浦授权的顾客服务中心，请他们检查。

吸尘器不能正常吸尘。

确保将集尘桶正确地安装在本产品中（见“清洁和保养”一章）。

检查集尘桶是否已满。如果已满，则将其倒空（见“清洁和保养”一章）。

检查滤网部件是否被堵塞。如果被堵塞，请拆下滤网部件，清洁内层和外层过滤网（见“清洁和保养”一章）。

尘土从吸尘器中溢出。

检查集尘桶是否已满。如果已满，则将其倒空（见“清洁和保养”一章）。

确保滤网部件已正确放置在集尘桶中（见“清洁和保养”一章）。

确保将集尘桶正确地安装在本产品中（见“清洁和保养”一章）。

安装地板吸嘴 (FC6132)、软管 (FC6130)、毛刷或缝隙吸嘴后，吸尘器不能正常工作。

检查地板吸嘴、软管、毛刷或缝隙吸嘴是否被堵塞。如果被堵塞，需清理杂物。

问题

解决方法

检查集尘桶是否已满。如果已满，则将其倒空（见“清洁和保养”一章）。

检查滤网部件是否被堵塞。如果被堵塞，请拆下滤网部件，清洁内层和外层过滤网（见“清洁和保养”一章）。

PHILIPS

产品 : 飞利浦便携式真空吸尘器
型号 : FC6130
额定电压 : 220V~
额定频率 : 50Hz
额定输入功率: 900 W
生产日期 : 请见产品本体
产地 : 中国



飞利浦（中国）投资有限公司
上海市天目西路218号1602-1605
全国顾客服务热线: 4008 800 008

本产品根据国标 GB4706.1-2005,
GB4706.7-2014, GB4343.1-2009及
GB17625.1-2012制造

PHILIPS

产品 : 飞利浦便携式真空吸尘器
型号 : FC6130
额定电压 : 220V~
额定频率 : 50Hz
额定输入功率: 900 W
生产日期 : 请见产品本体
产地 : 中国

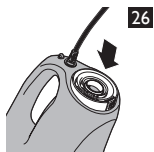
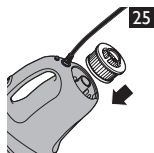
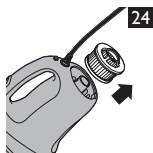
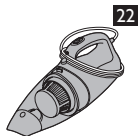


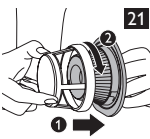
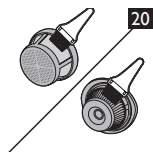
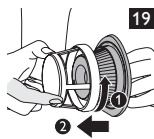
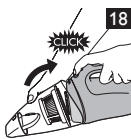
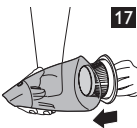
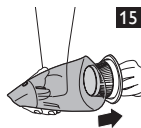
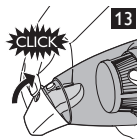
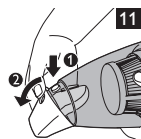
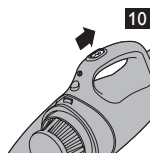
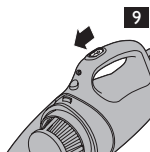
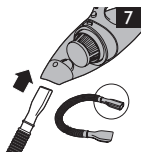
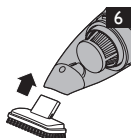
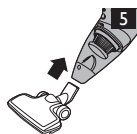
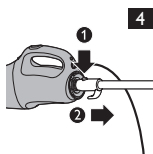
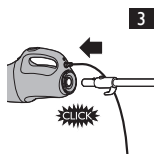
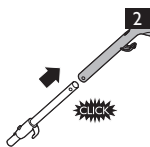
飞利浦（中国）投资有限公司
上海市天目西路218号1602-1605
全国顾客服务热线: 4008 800 008

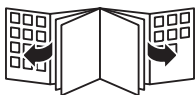
本产品根据国标 GB4706.1-2005,
GB4706.7-2014, GB4343.1-2009及
GB17625.1-2012制造

保留备用

发行日期 : 10/09/2015









www.philips.com



100% recycled paper
100% 循环再造纸

4222.003.3399.5