

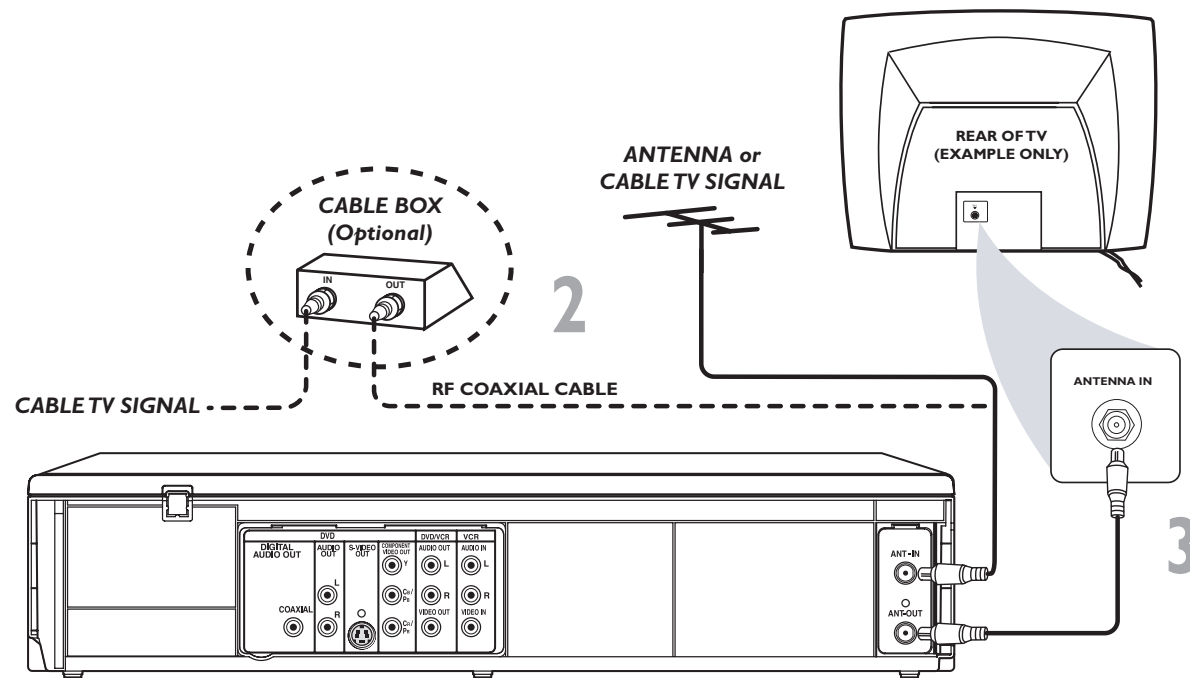


DVP620VR



PHILIPS

There are many ways to connect your new DVD/VCR to your Television and other equipment. This Quick-Use Guide shows the easiest, most common connection. Higher quality connections are explained in the accompanying owner's manual and will provide better sound or picture if your TV and/or audio system is compatible.



- 1** Disconnect all equipment from the power outlets. Connect the equipment to the power outlets only after you have finished hooking up everything. Never make or change connections with equipment connected to the power outlet.
- 2** Connect your Antenna TV signal directly to the AERIAL jack on the rear of the DVD/VCR using an RF cable (not supplied).
If you have a Cable Box (or Satellite Receiver), connect the OUT jack of the Cable Box/Satellite Receiver to the AERIAL jack on the DVD/VCR using an RF coaxial cable (not supplied).
- 3** Connect the supplied black RF coaxial cable to the DVD/VCR's ANT-OUT jack and to your TV's ANTENNA IN jack. The TV's ANTENNA IN jack may be labelled 75-ohm, TV IN, or RF IN. Check your TV manual for details.
- 4** Plug the power cords of the DVD/VCR and the TV into an active power outlet.
- 5** Turn on the TV power. Set the TV to a video channel. (If you cannot use channel 3 at your TV, you can use channel 4 instead. However, you must correspondingly set the DVD/VCR's output channel 3 or 4. See the accompanying DVD/VCR owner's manual for details.)
- 6** Press the **STANDBY-ON** button on the DVD/VCR or its remote to turn on the DVD/VCR. The first time you turn on the DVD/VCR, you should complete the VCR setup. See the other side of this Quick-Use Guide for details.

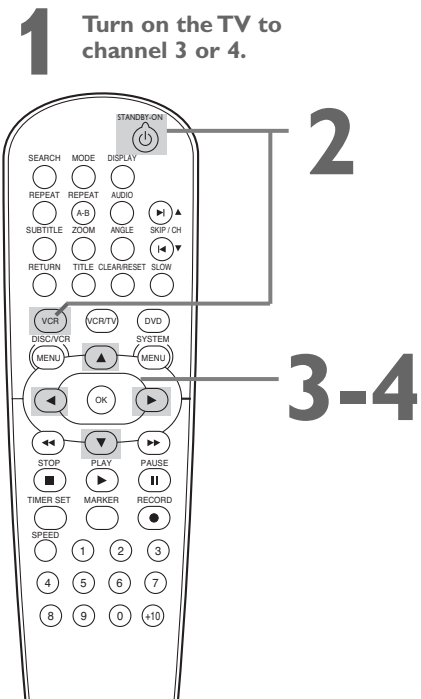
Quick-Use Guide (cont'd)

Setting Up the VCR the First Time

- 1** Turn on the TV and set it to channel 3 or 4.
- 2** Press **VCR**, then press **STANDBY-ON** . The VCR light will appear on the front of the DVD/VCR. The display shown below will appear.

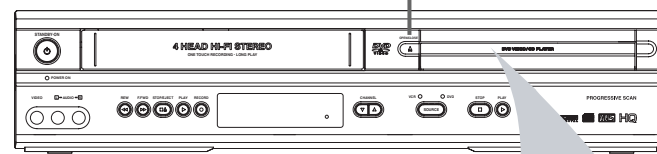
LANGUAGE SELECT
 ► ENGLISH [ON]
 FRANCAIS
 ESPAÑOL
 PUSH ►
- 3** Press **▲** or **▼** to select English, French, or Spanish as the language for VCR displays. Then, press **►**.
- 4** The AUTO SET UP message will appear. Press **►** to set up TV channels for the VCR. When setup is complete, the lowest TV channel will appear on the TV.

AUTO SET UP
 PUSH ►

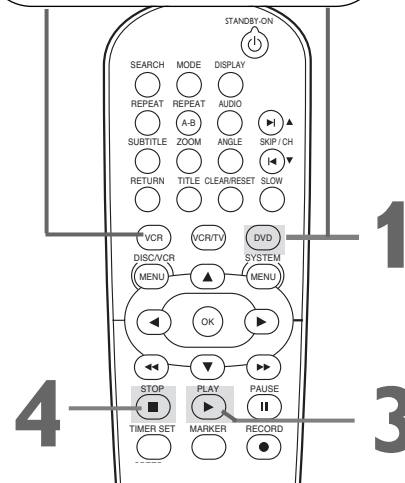


Playing a Disc

- 1** With the TV and DVD/VCR on, press the **DVD** button to put the DVD/VCR in the DVD mode.
- 2** Press **OPEN/CLOSE** to open the disc tray. Put a Disc in the tray with the label facing up and the shiny side facing down. Press **OPEN/CLOSE** again to close the disc tray.
- 3** Playback may start automatically. If not, press **PLAY** . If a DVD Disc menu appears, use the **◀, ▶, ▲, ▼** or Number buttons to select features or start playback. Follow the instructions in the menu.
- 4** To stop playing a Disc, press **STOP** .



Remote Control Setting
 Before using the remote:
 • Press 'DVD' for DVD functions.
 • Press 'VCR' for VCR functions.



Playable Discs

The DVD Player of the DVD/VCR will play the following Discs.



DVDs must have a Region Code of ALL regions or Region 1.



DVDs must be recorded in the **NTSC** or **PAL** Color System. Your TV must also have the NTSC or PAL color system

8239 300 31723
 OVMN04133A/H9620UD***