

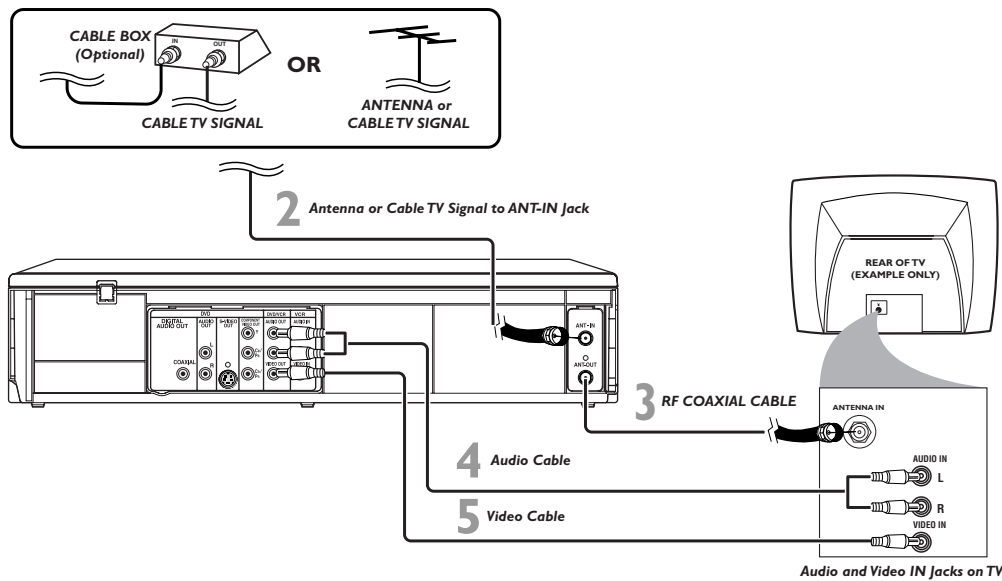


DVP3200V/37

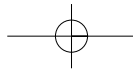


# PHILIPS

There are many ways to connect your new DVD/VCR to your Television and other equipment. This Quick Start Guide shows the easiest, most common connection. Higher quality connections are explained in the accompanying owner's manual and will provide better sound or picture if your TV and/or audio system is compatible.



- 1** Disconnect all equipment from the power outlets. Connect the equipment to the power outlets only after you have finished hooking up everything. Never make or change connections with equipment connected to the power outlet.
- 2** Connect your Antenna TV signal or, if you have a Cable Box/Satellite Receiver, the OUT jack of your Cable Box/Satellite Receiver to the ANT-IN jack on the rear of the DVD/VCR using the supplied RF coaxial cable.
- 3** Connect another RF coaxial cable (not supplied) to the DVD/VCR's ANT-OUT jack and to your TV's ANTENNA IN jack. The TV's ANTENNA IN jack may be labelled 75-ohm, TV IN, or RF IN. Check your TV manual for details.
- 4** Connect the red and white audio cable (supplied) to the red and white DVD/VCR AUDIO OUT jacks on the DVD/VCR and to the red and white AUDIO IN jacks on the TV.
- 5** Connect the yellow video cable (supplied) to the DVD/VCR VIDEO OUT jack on the DVD/VCR and to the VIDEO IN jack on the TV. The VIDEO IN jack on the TV is usually yellow and may be labelled CVBS, Composite, or Baseband video.
- 6** Plug the power cords of the DVD/VCR and the TV into an active power outlet.
- 7** Turn on the TV and set it to the correct Audio/Video In channel.
- 8** Press or STANDBY-ON on the front panel to turn on the DVD/VCR. The first time you turn on the DVD/VCR, you should complete the First-time DVD/VCR Setup. See the other side of this Quick Start Guide for details.

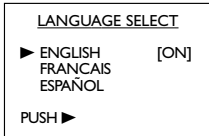


# Quick Start Guide (cont'd)

## First-Time DVD/VCR Setup

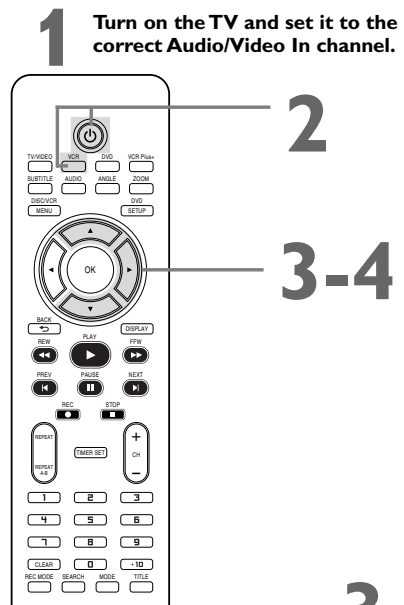
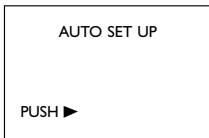
**1** Turn on the TV and set it to the correct Audio/Video In channel.

**2** Press **VCR**, then press **⏻**. VCR light will appear on the front of the DVD/VCR. The TV display shown below will appear.



**3** Press **▲** or **▼** to select **ENGLISH, FRANCAIS (French), or ESPAÑOL (Spanish)** as the language for VCR on-screen displays. Then, press **▶**.

**4** The AUTO SET UP message will appear. Press **▶** to set up TV channels for the VCR. When setup is complete, the lowest TV channel will appear on the TV.



## Playing a Disc

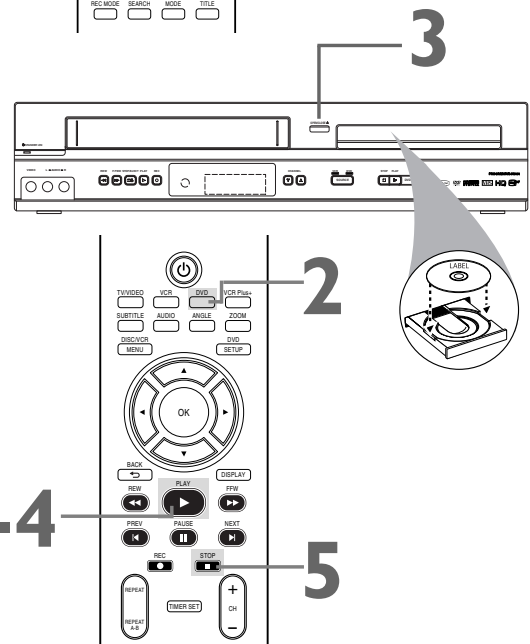
**1** Turn on the TV and set it to the correct Audio/Video In channel.

**2** With the TV and DVD/VCR turned on, press **DVD** to put the DVD/VCR in DVD mode.

**3** Press **OPEN/CLOSE ▲** to open the disc tray. Put a disc in the tray with the label facing up and the shiny side facing down. Press **PLAY ▶** to close the disc tray.

**4** Playback may start automatically. If not, press **PLAY ▶**. If a DVD Disc menu appears, use the **◀▶▲▼**, **OK**, or Number buttons to select features or start playback. Follow the instructions in the menu.

**5** To stop playing a Disc, press **STOP ■**.



## Playable Discs

The DVD Player of the DVD/VCR will play the following Discs.



**DVD** is a trademark of DVD Format/Logo Licensing Corporation.

Windows Media is a trademark of Microsoft Corporation.

DivX, DivX Certified, and associated logos are trademarks of DivX, Inc. and are used under license.



DVDs must have a Region Code of ALL regions or Region 1.

DVDs must be recorded in either the **NTSC** or **PAL** color system.

Your TV must also have the NTSC or PAL color system.



8239 300 47521  
1VMN22605\*\*\*\*  
E8A21UD

