

Software Upgrade Instruction for DVDR7300H /02 /05 /19 /75 /97 DVDR7310H /05 /31 /58 /75 /97

Important!

This software upgrade is only applicable for the following models:

DVDR7300H /02 /05 /19 /75 /97

DVDR7310H /05 /31 /58 /75 /97

If you use it with another product, you may damage the product and lose your guarantee. To find out your model number, please look at the type plate on the back of the set.

1) Finding the current software version of DVDR7300H/DVDR7310H

This procedure is not needed for upgrading but could help in case you need to call the helpdesk.

Press **SYSTEM** on the Remote Control, press down arrow ▼ twice to go to “**Set up**”. Press right arrow ► to go to “**System**”. Press down arrow ▼ to “**Version Info**” and press **OK**.

You should be able to see one of the following versions:

- SIT7300-LR1F_339_622_B1
- SIT7300-LR2A_340_634_B1
- SIT7300-LR2E_341

2) Making an Upgrade Disc

Before upgrading the software, you will need to make a software upgrade disc.

You will need the following items:

- A PC drive that can write on CD-R/CD-RW discs
- A blank (new) CD-R/CD-RW disc

- CD burning/writing tool (e.g. Nero, Easy CD Creator)
- A zip archive utility

Tip: For more information on burning software, we suggest that you can refer to the following two popular software burning/writing tools:

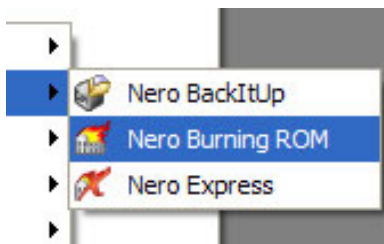
- www.nero.com
- www.easycdcreator.com

1. Extract the ISO image from “**SIT7300-LR2F-341.zip**”.
 - Do not rename the filename.
 - Visit <http://www.winzip.com/> for downloads if you cannot open the .zip file.
2. Insert a blank new CD-R/CD-RW disc into the CD-R/CD-RW writer. Follow the steps below to burn the image onto the blank disc depending on which burning tool you are using.

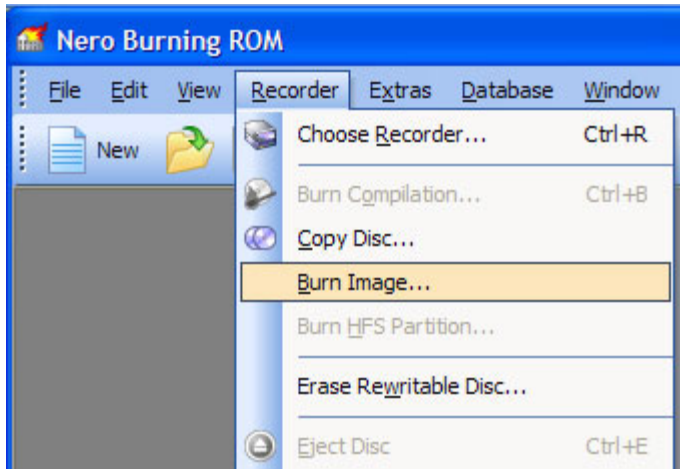
Using Nero Burning Rom

Please make sure you are using **Nero Burning Rom** and not Nero Express. If necessary, you can start Nero Burning Rom directly from the Nero folder in your Windows Start Menu.

1. Open Nero Burning Rom.



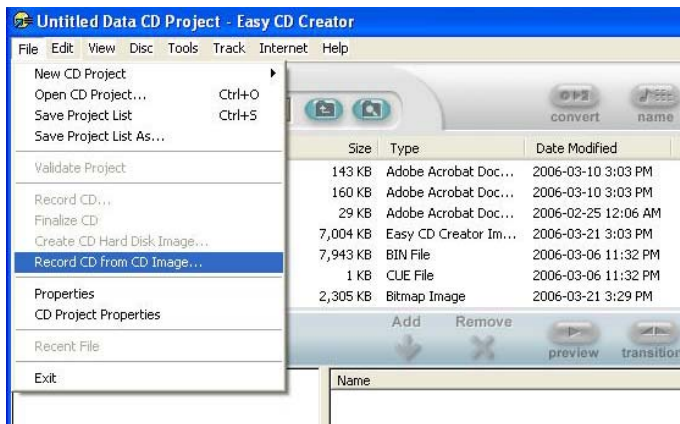
2. Select '**Burn Image**' from the '**Recorder**' menu.



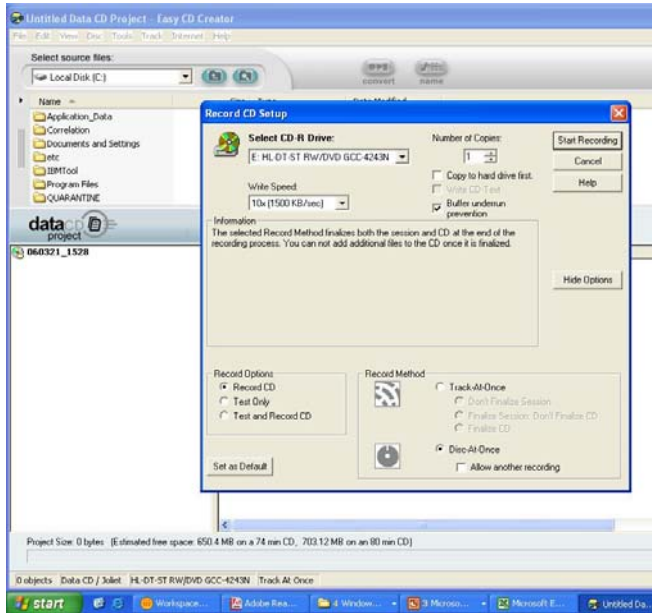
3. Select the ISO image you have extracted.
4. Click '**Burn**'. After the burning process is completed. The disc is ready for upgrading the software.

Using CD Creator

1. Open CD Creator.
2. Select '**Create Data CD**'.
3. Select '**Record CD from CD image**' in the '**File**' menu.



4. Select the ISO image that is extracted.
5. Click '**Start Recording**'. After the recording process is completed. The disc is ready for upgrading the software.



3) Upgrade Procedure

- **Please do not unplug the mains during the software upgrade.**
 - **Please do not press any button on the front panel during software upgrade.**
1. Press **OPEN/CLOSE** to open the tray.
 2. Insert the upgrade disc, label side up.
 3. Press **OPEN/CLOSE** to close the tray.
 - First '**READING**' appears on the display. There will be some messages on the TV to prompt user whether to continue to install the software. Select '**YES**' and click '**OK**'. The display will show '**DOWNLOAD**'. The upgrade procedure can take up to 15 minutes in total.
 - If the software was already updated, the display will show '**SYS OK**' and then '**DONE**'. No upgrade is needed.
 - After the above has occurred, the display will be blank for few seconds and then show the clock information.
 4. Press '**OPEN/CLOSE**' key to wake up the set and eject the tray.
 5. Now remove the disc, and close the tray.
 6. You may use the set as normal.

Upgrade History

Version: LR2F

Release Date: May 14th, 2007

Improvements:

- Improved behaviour of the set when customer encounters HDMI ERROR message.
- Resolved issue where TSB bar is still in red color even when timer has ended.